

UNITED STATES  
DEPARTMENT OF THE INTERIOR  
BUREAU OF LAND MANAGEMENT

APPLICATION FOR PERMIT TO DRILL, DEEPEN, OR PLUG BACK

1a. TYPE OF WORK  
DRILL ☒ DEEPEN ☐ PLUG BACK ☐  
b. TYPE OF WELL  
OIL WELL ☒ GAS WELL ☐ OTHER Comingled SINGLE ZONE ☐ MULTIPLE ZONE ☐  
2. NAME OF OPERATOR  
W.B. Martin and Associates  
3. ADDRESS OF OPERATOR  
709 H. Butler, Farmington, New Mexico 87401  
4. LOCATION OF WELL (Report location clearly and in accordance with any State requirements.)  
At surface 985' FNL and 1120' FWL  
At proposed prod. zone  
14. DISTANCE IN MILES AND DIRECTION FROM NEAREST TOWN OR POST OFFICE TO PROPOSED WELL LOCATION  
19 miles NW of Cuba, N.M.  
15. DISTANCE FROM PROPOSED\* LOCATION TO NEAREST PROPERTY OR LEASE LINE, FT. (Also to nearest drlg. unit line, if any) 985'  
16. NO. OF ACRES IN LEASE 2560  
17. NO. OF ACRES ASSIGNED TO THIS WELL 160  
18. DISTANCE FROM PROPOSED LOCATION\* TO NEAREST WELL, DRILLING, COMPLETED, OR APPLIED FOR, ON THIS LEASE, FT. 7360'  
19. PROPOSED DEPTH 7510'  
20. ROTARY OR CABLE TOOLS Rotary  
21. ELEVATIONS (Show whether DF, RT, GR, etc.) 6663' GR  
22. APPROX. DATE WORK WILL START\*  
Dependant Upon Approval

5. LEASE DESIGNATION AND SERIAL NO.  
Jicarilla Contract #42  
6. IF INDIAN, ALLOTTEE OR TRIBE NAME  
Jicarilla Apache  
7. UNIT AGREEMENT NAME  
8. FARM OR LEASE NAME  
9. WELL NO.  
#56 Martin-Whittaker  
10. FIELD AND POOL, OR WILDCAT  
South Lindrith-Gal/Dak West  
11. SEC., T., R., M., OR BLK. AND SURVEY OR AREA  
S.18 T.24N R.4W  
12. COUNTY OR PARISH  
Rio Arriba  
13. STATE  
New Mexico

DRILLING OPERATIONS AUTHORIZED ARE  
SUBJECT TO COMPLIANCE WITH ATTACHED  
"GENERAL REQUIREMENTS"

PROPOSED CASING AND CEMENTING PROGRAM

| SIZE OF CASING | WEIGHT PER FOOT | SETTING DEPTH | QUANTITY OF CEMENT      |
|----------------|-----------------|---------------|-------------------------|
| 12 1/4"        | 32              | 250           | 206.50 ft <sup>3</sup>  |
| 8 3/4"         | 23              | 5480'         | 1100.00 ft <sup>3</sup> |
| 6 1/4"         | 11.60           | 7510'         | 320.00 ft <sup>3</sup>  |

Proposed Operations

1. Drill 12 1/4" hole to  $\pm 250'$  with spud mud. Run and cement surface. WOC 12 hours. Pressure test BOP to 1000 PSI.
2. Drill 8 3/4" hole to  $\pm 5480'$  with low solids-low water loss mud. Run and cement 7" casing. WOC 12 hours.
3. Drill 6 1/4" hole to  $\pm 7510'$  with air. Run and cement 4 1/2" casing.

IN ABOVE SPACE DESCRIBE PROPOSED PROGRAM: If proposal is to deepen or plug back, give data on present productive zone and proposed new productive zone. If proposal is to drill or deepen directionally, give pertinent data on subsurface locations and measured and true vertical depths. Give blowout preventer program, if any.

24. SIGNED W.B. Martin TITLE Operator

(This space for Federal or State office use)

PERMIT NO. APPROVAL DATE

APPROVED BY TITLE

CONDITIONS OF APPROVAL, IF ANY:

JUL 27 1984  
OIL CON. DIV.  
DIST. 3

NMOCC

\*See Instructions On Reverse Side

APPROVED

AS AMENDED  
JUL 25 1984

AREA MANAGER  
FARMINGTON RESOURCE AREA

Title 18 U.S.C. Section 1001, makes it a crime for any person knowingly and willfully to make to any department or agency of the United States any false, fictitious or fraudulent statements or representations as to any matter within its jurisdiction.

All distances must be from the outer boundaries of the Section.

|  |                      |                        |                                 |                             |                       |
|--|----------------------|------------------------|---------------------------------|-----------------------------|-----------------------|
| Operator<br><b>W. B. MARTIN &amp; ASSOCIATES, INC.</b> |                      |                        | Lease<br><b>MARTIN-WHITAKER</b> |                             | Well No.<br><b>56</b> |
| Section<br><b>C</b>                                    | Section<br><b>18</b> | Township<br><b>24N</b> | Range<br><b>4W</b>              | County<br><b>Rio Arriba</b> |                       |

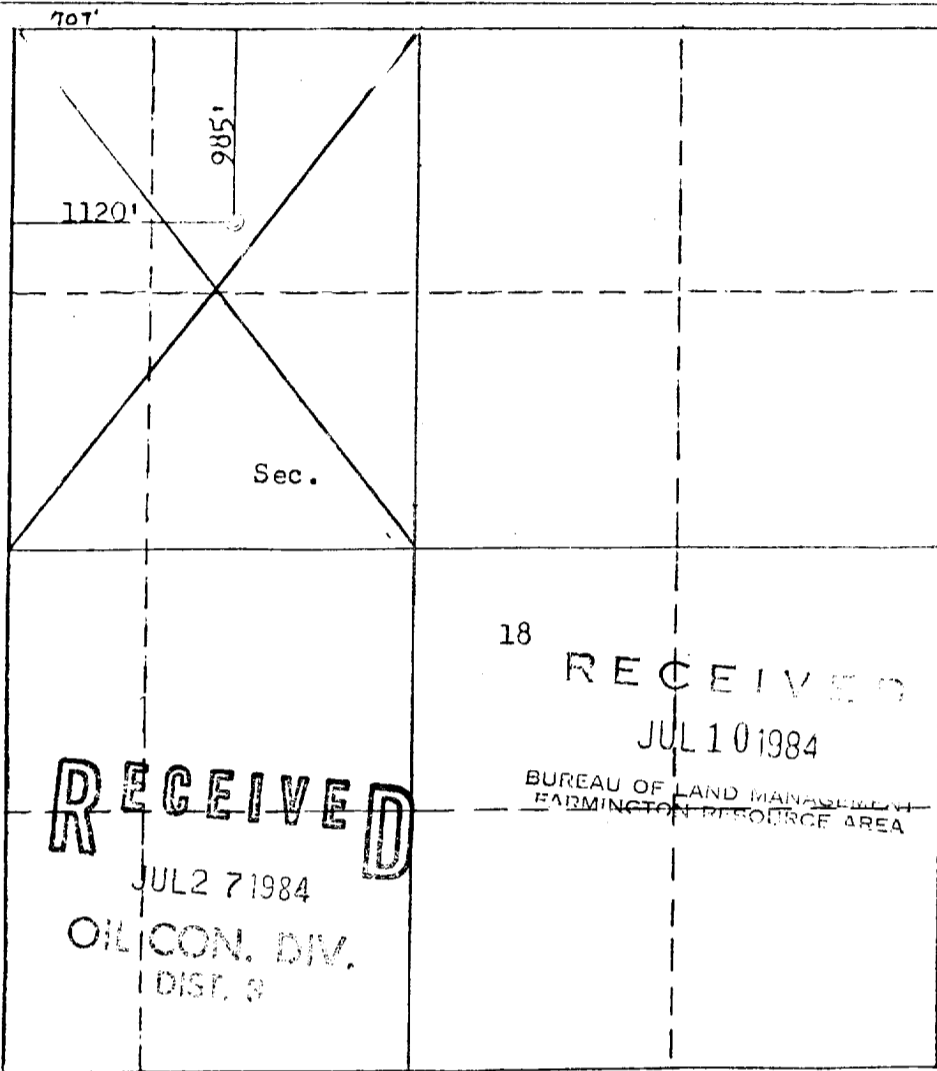
|                                   |   |                              |  |   |         |
|-----------------------------------|---|------------------------------|--|---|---------|
| Well Footage Location of Well:    |   |                              |  |   |         |
| 985 feet from the North line and  |   | 1120 feet from the West line |  |   |         |
| Ground Level Elev.<br><b>6663</b> | Producing Formation<br><b>Gallup-Dakota</b> |                              | Pool<br><b>West South Lindrith Extension</b> | Dedicated Acreage:<br><b>123.04 160</b> | Acreage |

1. Outline the acreage dedicated to the subject well by colored pencil or hachure marks on the plat below.
2. If more than one lease is dedicated to the well, outline each and identify the ownership thereof (both as to working interest and royalty).
3. If more than one lease of different ownership is dedicated to the well, have the interests of all owners been consolidated by communitization, unitization, force-pooling, etc?

☐ Yes ☐ No If answer is "yes," type of consolidation \_\_\_\_\_

If answer is "no," list the owners and tract descriptions which have actually been consolidated. (Use reverse side of this form if necessary.) \_\_\_\_\_

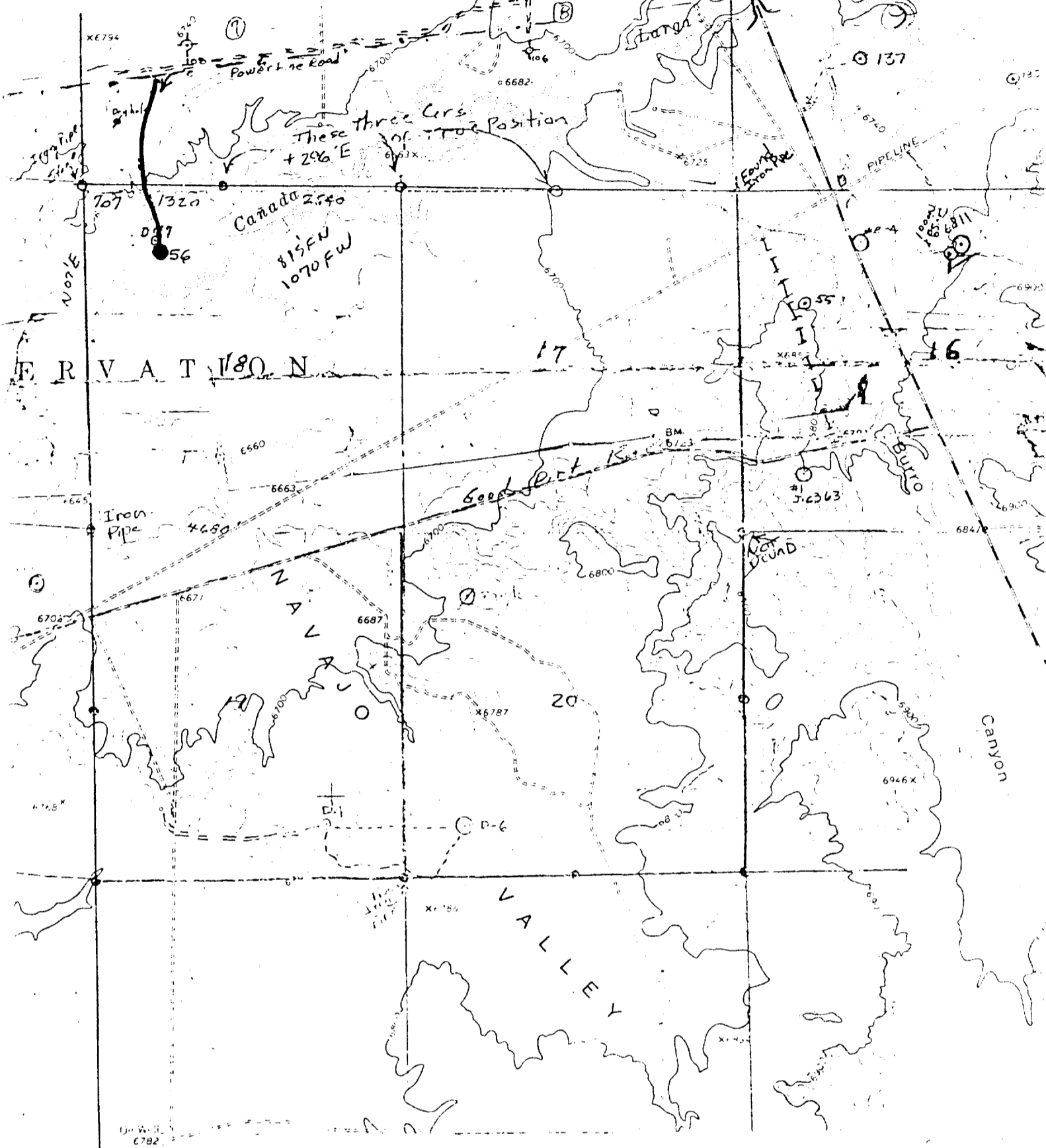
No allowable will be assigned to the well until all interests have been consolidated (by communitization, unitization, forced-pooling, or otherwise) or until a non-standard unit, eliminating such interests, has been approved by the Commission.



Scale: 1"=1000'

|   |  |
|---|--|
| CERTIFICATION   |  |
| I hereby certify that the information contained herein is true and complete to the best of my knowledge and belief.   |  |
| Name<br><i>W.B. Martin</i>  |  |
| Position<br>President   |  |
| Company<br>W.B. Martin & Associate  |  |
| Date<br>7/2/84  |  |
| I hereby certify that the well location shown on this plat was plotted from field notes of actual surveys made by me or under my supervision, and that the same is true and correct to the best of my knowledge and belief. |  |
| Date Surveyed<br>June 26, 1984  |  |
| Registered Professional Engineer and Land Surveyor<br><i>Fred B. Kerr Jr.</i>   |  |
| Certificate No. 4022  |  |

Proposed new access road will be approximately 2500' long (Red)  
 The road surface will not exceed twenty feet (20') in width.



Vicinity Map for  
 W. B. MARTIN & ASSOCIATES INC. #56 MARTIN-WHITAKER  
 985'FNL 1120'FWL Sec. 18-T24N-RLW  
 RIO ARRIBA COUNTY, NEW MEXICO