

UNITED STATES
DEPARTMENT OF THE INTERIOR
GEOLOGICAL SURVEY

APPLICATION FOR PERMIT TO DRILL, DEEPEN, OR PLUG BACK

1a. TYPE OF WORK
DRILL ☒ DEEPEN ☐ PLUG BACK ☐b. TYPE OF WELL
OIL WELL ☒ GAS WELL ☐ OTHER ☐ SINGLE ZONE ☒ MULTIPLE ZONE ☐

2. NAME OF OPERATOR

Merrion Oil & Gas Corporation

3. ADDRESS OF OPERATOR

Post Office Box 1017, Farmington, New Mexico 87499

4. LOCATION OF WELL (Report location clearly and in accordance with any State requirements.)
At surface

2070' FNL and 280' FEL

At proposed prod. zone

Same

14. DISTANCE IN MILES AND DIRECTION FROM NEAREST TOWN OR POST OFFICE RESOURCE AREA

13 miles North of Counselors

15. DISTANCE FROM PROPOSED*
LOCATION TO NEAREST
PROPERTY OR LEASE LINE, FT.
(Also to nearest drig. unit line, if any)

280 ft.

18. DISTANCE FROM PROPOSED LOCATION*
TO NEAREST WELL, DRILLING, COMPLETED,
OR APPLIED FOR, ON THIS LEASE, FT.

1570 ft.

21. ELEVATIONS (Show whether DF, RT, GR, etc.)
6518' GL
DRILLING OPERATIONS AUTHORIZED ARE
SUBJECT TO COMPLIANCE WITH ATTACHED
"GENERAL REQUIREMENTS"

23. PROPOSED CASING AND CEMENTING PROGRAM

SIZE OF HOLE	SIZE OF CASING	WEIGHT PER FOOT	SETTING DEPTH	QUANTITY OF CEMENT
12-1/4"	8-5/8"	24 #/ft. J-55	200'	175 sx (360.5 cu.ft.)
7-7/8"	4-1/2"	11.6 #/ft. J-55	5720'	1025 sx

Will drill 12-1/4" surface hole to 200 ft. and set 200 ft. of 8-5/8", 24 #/ft. J-55 grade casing with 175 sx Class B cement with 3% CaCl₂. Will drill 7-7/8" hole to 5720 ft. Will run open hole logs. No other testing planned. If well appears productive, will run 5720 ft. of 4-1/2", 11.6 #/ft. J-55 grade casing and stage cement. First stage will cement with 225 sx Class H 2% gel (1.22 cu.ft./sk), 275 cu.ft. cement to cover Gallup interval from TD. Estimated top of cement is 4700 ft. Stage tool at 4500' below Point Lookout formation. Second stage will cement with 700 sx Class B 2% D-79 (2.06 cu.ft./sk) 1442 cu.ft. cement followed by 100 sx Class H 2% gel (1.22 cu.ft./sk) 122 cu.ft. cement to cover Mesaverde, Chacra, Pictured Cliff, Fruitland and Ojo Alamo. Estimated top of cement is surface. Drilling circulating medium will be low solids, non-dispersed, low water loss mud using Gentonite, starch, CMC and fresh water. Minimum specifications for pressure control is 10", 900 series Double Ram Blow Out Preventer. Will perforate and stimulate as required for completion.

IN ABOVE SPACE DESCRIBE PROPOSED PROGRAM: If proposal is to deepen or plug back, give data on present productive zone and proposed new productive zone. If proposal is to drill or deepen directionally, give pertinent data on subsurface locations and measured and true vertical depths. Give blowout preventer program, if any.

24.

SIGNED

TITLE

Operations Manager

(This space for Federal State or use)

PERMIT NO.

APPROVAL DATE

APPROVED BY

CONDITIONS OF APPROVAL, IF ANY

TITLE

OIL CON. DIV.
DIST. 3Will 100' for ASD
on 5/2

NMOCC

5. LEASE DESIGNATION AND SERIAL NO.

SF 078877

6. IF INDIAN, ALLOTTEE OR TRIBE NAME

7. UNIT AGREEMENT NAME

Canyon Largo Unit

8. FARM OR LEASE NAME

Canyon Largo Unit

9. WELL NO.

131-R

10. FIELD AND POOL OR WILDCAT

Devils Fork Gallup

11. SEC. T., R., M. OR BLK.
AND SURVEY OR AREA

Sec. 9, T24N, R6W

12. COUNTY OR PARISH

13. STATE

Rio Arriba

New Mexico

17. NO. OF ACRES ASSIGNED
TO THIS WELL

160

20. ROTARY OR CABLE TOOLS

Rotary

22. APPROX. DATE WORK WILL START*

This action subject to administrative

appeal pursuant to 30 CFR 290.

APPROVED

AS AMENDED

AUG 24 1984

DATE

SGD.) MAT MILLENBACH

AREA MANAGER
FARMINGTON RESOURCE AREA

Form C-107
Revised 10-1-

All distances must be from the outer boundaries of the Section.

Operator		Lease		Well No.	
MERRION OIL & GAS CORPORATION		CANYON LARGO UNIT		131 R	
Unit Letter	Section	Township	Range	County	
H	9	24N	6W	Rio Arriba	
Actual Footage Location of Wells:					
2070		feet from the North		line and 280 feet from the East line	
Ground Level Elev:	Producing Formation	Pool	Dedicated Acreage:		
6518	Gallup	Devils Fork Gallup	160		Acres

1. Outline the acreage dedicated to the subject well by colored pencil or hachure marks on the plat below.

2. If more than one lease is dedicated to the well, outline each and identify the ownership thereof (both as to working interest and royalty).

3. If more than one lease of different ownership is dedicated to the well, have the interests of all owners been consolidated by communitization, unitization, force-pooling, etc?

☐ Yes ☐ No If answer is "yes," type of consolidation _____

If answer is "no," list the owners and tract descriptions which have actually been consolidated. (Use reverse side of this form if necessary.) _____

No allowable will be assigned to the well until all interests have been consolidated (by communitization, unitization, forced-pooling, or otherwise) or until a non-standard unit, eliminating such interests, has been approved by the Commission.

2070'

280'

Sec.

SF 078877

⁹RECEIVED
JUL 27 1984
BUREAU OF LAND MANAGEMENT
FARMINGTON, UTAH 84401

RECEIVED
AUG 29 1984
OIL

Scale: 1"=1000'

CERTIFICATION

I hereby certify that the information contained herein is true and complete to the best of my knowledge and belief.

Name

Steve S. Dunn

Position

Operations Manager

Company	Address	City	State	Zip
1				
2				
3				
4				
5				
6				
7				
8				
9				
10				
11				
12				
13				
14				
15				
16				
17				
18				
19				
20				
21				
22				
23				
24				
25				
26				
27				
28				
29				
30				
31				
32				
33				
34				
35				
36				
37				
38				
39				
40				
41				
42				
43				
44				
45				
46				
47				
48				
49				
50				

Merrion Oil & Gas Corporation

Date: _____

07/09/84

I hereby certify that the well location shown on this plat was plotted from field notes of actual surveys made by me or under my supervision, and that the same is true and correct to the best of my knowledge and belief.

Date Surveyed _____

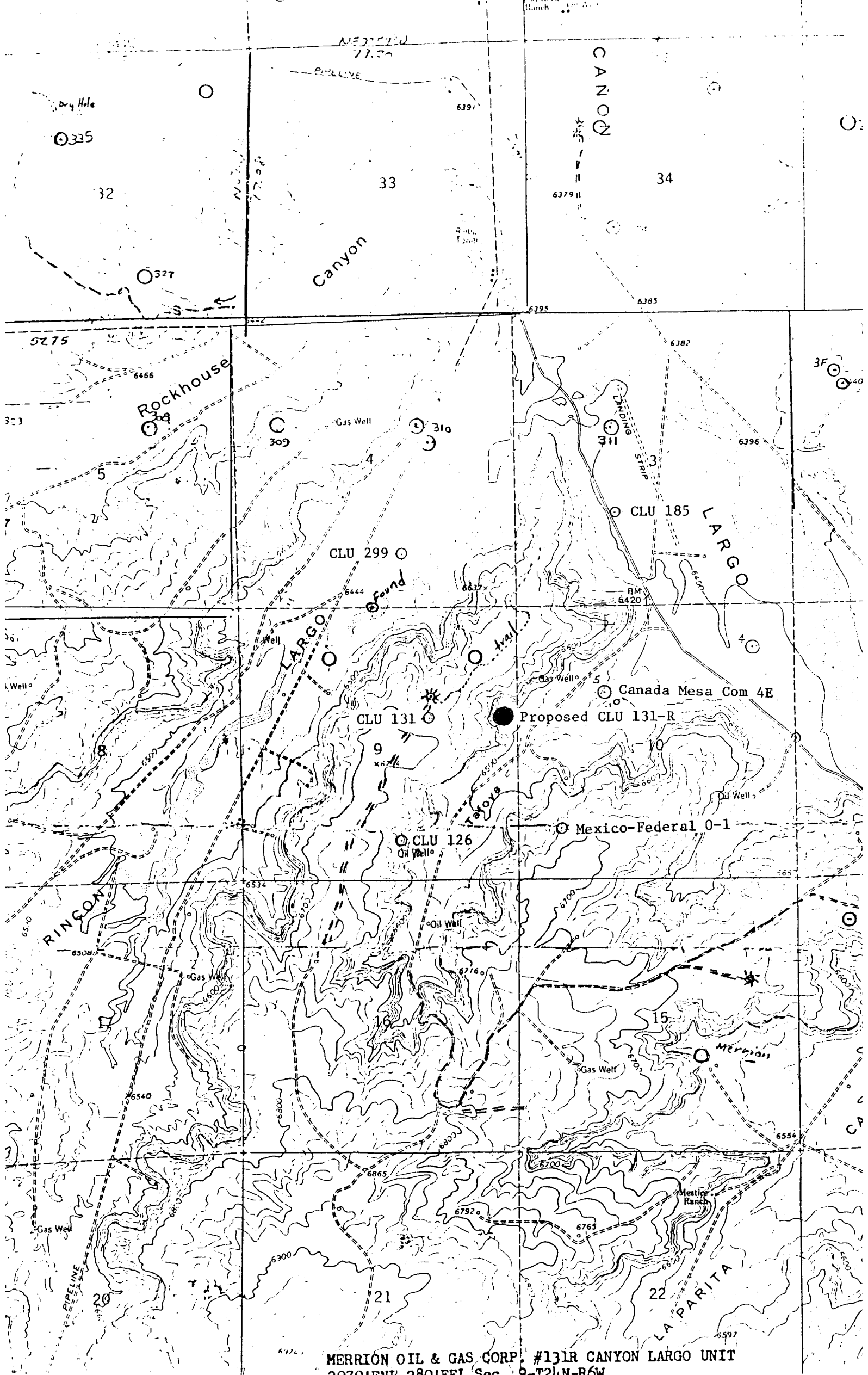
July 2, 1981

Registered Professional Engineer
and Land Surveyor

Fred. B. Kerr Jr

Certificate No. 4

3950



MERRION OIL & GAS CORP. #131R CANYON LARGO UNIT
2070'FNE 280'FEL Sec. 9-T24N-R6W