

UNITED STATES
DEPARTMENT OF THE INTERIOR
GEOLOGICAL SURVEY

APPLICATION FOR PERMIT TO DRILL, DEEPEN, OR PLUG BACK

1a. TYPE OF WORK

DRILL ☒DEEPEN ☐PLUG BACK ☐

b. TYPE OF WELL

OIL
WELL ☒GAS
WELL ☐

OTHER

SINGLE
ZONE ☐MULTIPLE
ZONE ☒

2. NAME OF OPERATOR

Merrion Oil & Gas Corporation

3. ADDRESS OF OPERATOR

P. O. Box 1017, Farmington, New Mexico 87499

4. LOCATION OF WELL (Report location clearly and in accordance with any State requirements.)*

At surface

940' FSL and 1850' FWL

At proposed prod. zone Same

14. DISTANCE IN MILES AND DIRECTION FROM NEAREST TOWN OR POST OFFICE*

15. DISTANCE FROM PROPOSED*

LOCATION TO NEAREST
PROPERTY OR LEASE LINE, FT.
(Also to nearest drlg. unit line, if any)

16. NO. OF ACRES IN LEASE

1280

18. DISTANCE FROM PROPOSED LOCATION*
TO NEAREST WELL, DRILLING, COMPLETED,
OR APPLIED FOR, ON THIS LEASE, FT.

19. PROPOSED DEPTH

8045' KB

17. NO. OF ACRES ASSIGNED
TO THIS WELL

220 - 40/40

20. ROTARY OR CABLE TOOLS

Rotary

21. ELEVATIONS (Show whether DF, RT, GR, etc.)

7348' GL, 7361' KB

DRILLING OPERATIONS AUTHORIZED ARE
SUBJECT TO COMPLIANCE WITH ATTACHED

22. APPROX. DATE WORK WILL START*

Fall, 1984

23. "GENERAL REQUIREMENTS" AND CEMENTING PROGRAM

This action is subject to administrative
appeal pursuant to 30 CFR 290.
QUANTITY OF CEMENT

SIZE OF HOLE	SIZE OF CASING	WEIGHT PER FOOT	SETTING DEPTH	
12-1/4"	9-5/8", J-55	32 #/ft.	300'	125 sx Class B (148 cu. ft.)
8-3/4"				
7-7/8"	5-1/2", J-55	15.5 & 17 #/ft.	7361' KB	715 sx as below

Propose to drill 12-1/4" hole to 300' and set 300' of 9-5/8", 32 #/ft, J-55 surface casing with 125 sx Class B (148 cu. ft.) cement, 3% CaCl₂. Will drill 8-3/4" hole to approximately 5000'. Will reduce to 7-7/8" hole to TD. Will run open hole logs. If well appears productive, will run 5-1/2", 15.5 & 17 #/ft., J-55 casing to TD and cement in three stages. 1st Stage - 300 sx Class H 2% gel (366 cu. ft.) to cover Gallup and Dakota. 2nd Stage - set stage tool @ 5695' KB and cement with 165 sx Class B 2% D-79 (340 cu. ft.) followed by 50 sx Class H (61 cu. ft.) 2% gel to cover Mesaverde. Third Stage Tool @ 5682' KB with 150 sx Class B (309 cu. ft.) 2% D-79 followed by 50 sx (61 cu. ft.) Class H 2% gel to cover Pictured Cliffs, Fruitland, Kirtland, and Ojo Alamo. Will perforate and stimulate the Gallup and Dakota as necessary. 10" 900 series Double Ram Preventers will be used in drilling.

Drillint circulating medium will be low solids, non-dispersed, low water loss mud using Bentonite, Starch, CMC and fresh water.

Lost circulation is expected.

Estimated tops on back.

IN ABOVE SPACE DESCRIBE PROPOSED PROGRAM: If proposal is to deepen or plug back, give data on present productive zone and proposed new productive zone. If proposal is to drill or deepen directionally, give pertinent data on subsurface locations and measured and true vertical depths. Give blowout preventer program, if any.

24.

SIGNED

Operations Manager

(This space for Federal or State office use)

PERMIT NO.

APPROVAL DATE

APPROVED BY

CONDITIONS OF APPROVAL, IF ANY:

RECEIVED
NOV 26 1984
OIL CON. DIV.
DIST. 3

NMOCC

DATE	9/18/84
APPROVED	
AS AMENDED	
NOV 13 1984	
For AREA MANAGER FARMINGTON RESOURCE AREA	

All distances must be from the outer boundaries of the Section.

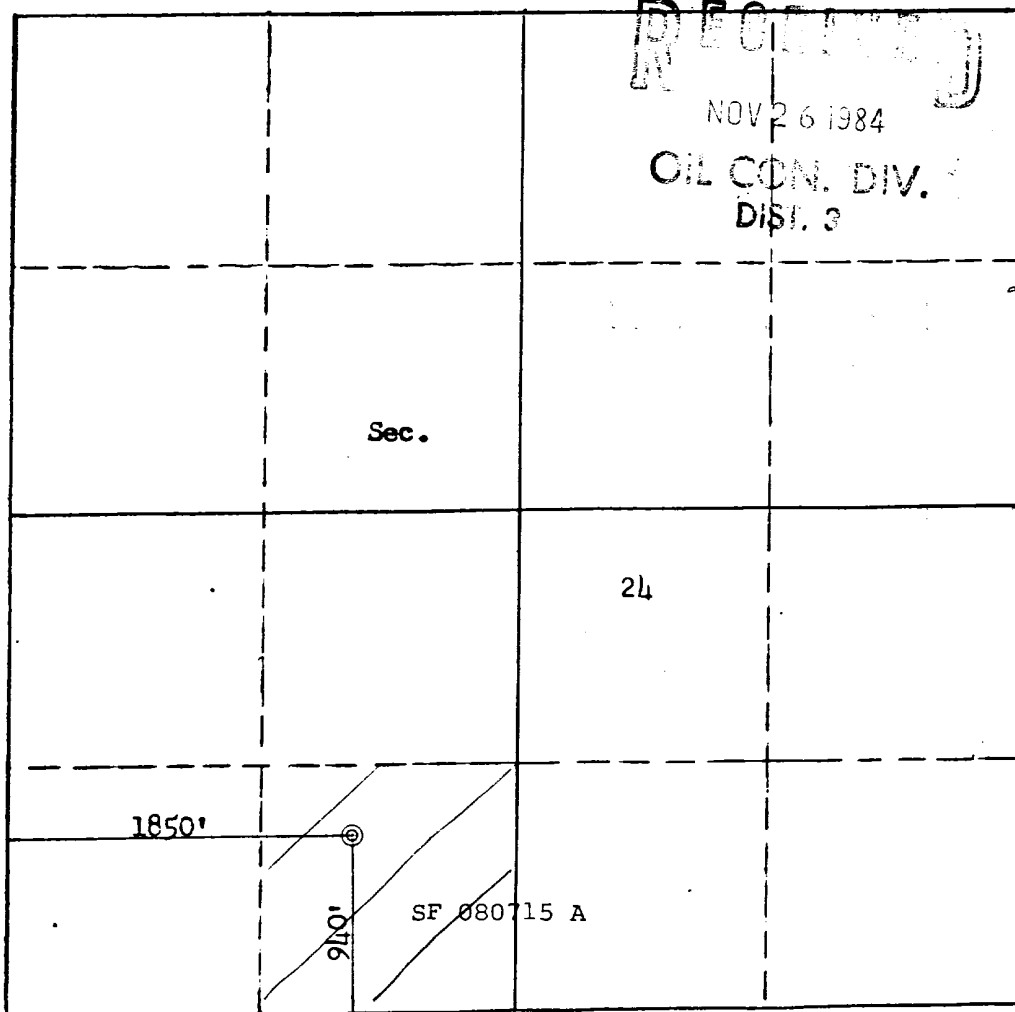
Operator MERRION OIL & GAS CORPORATION			Lease Rocky Mountain		Well No. 1
Unit Letter N	Section 24	Township 24N	Range 2W	County Rio Arriba	
Actual Footage Location of Well: 940 feet from the South line and 1850 feet from the West line					
Ground Level Elev. 7348	Producing Formation Mancos/Gallup/Dakota		Pool Gallup-Mancos, Undes. Gal/Dak	Dedicated Acreage 220 40/40 Acres	

1. Outline the acreage dedicated to the subject well by colored pencil or hatchure marks on the plat below.
2. If more than one lease is dedicated to the well, outline each and identify the ownership thereof (both as to working interest and royalty).
3. If more than one lease of different ownership is dedicated to the well, have the interests of all owners been consolidated by communitization, unitization, force-pooling, etc?

☐ Yes ☐ No If answer is "yes," type of consolidation _____

If answer is "no," list the owners and tract descriptions which have actually been consolidated. (Use reverse side of this form if necessary.) _____

No allowable will be assigned to the well until all interests have been consolidated (by communitization, unitization, forced-pooling, or otherwise) or until a non-standard unit, eliminating such interests, has been approved by the Commission.



Scale: 1"=1000'

CERTIFICATION

I hereby certify that the information contained herein is true and complete to the best of my knowledge and belief.

Steve S. Dunn

Name
Steve S. Dunn

Position
Operations Manager

Company
Merrion Oil & Gas Corporation

Date
9/18/84

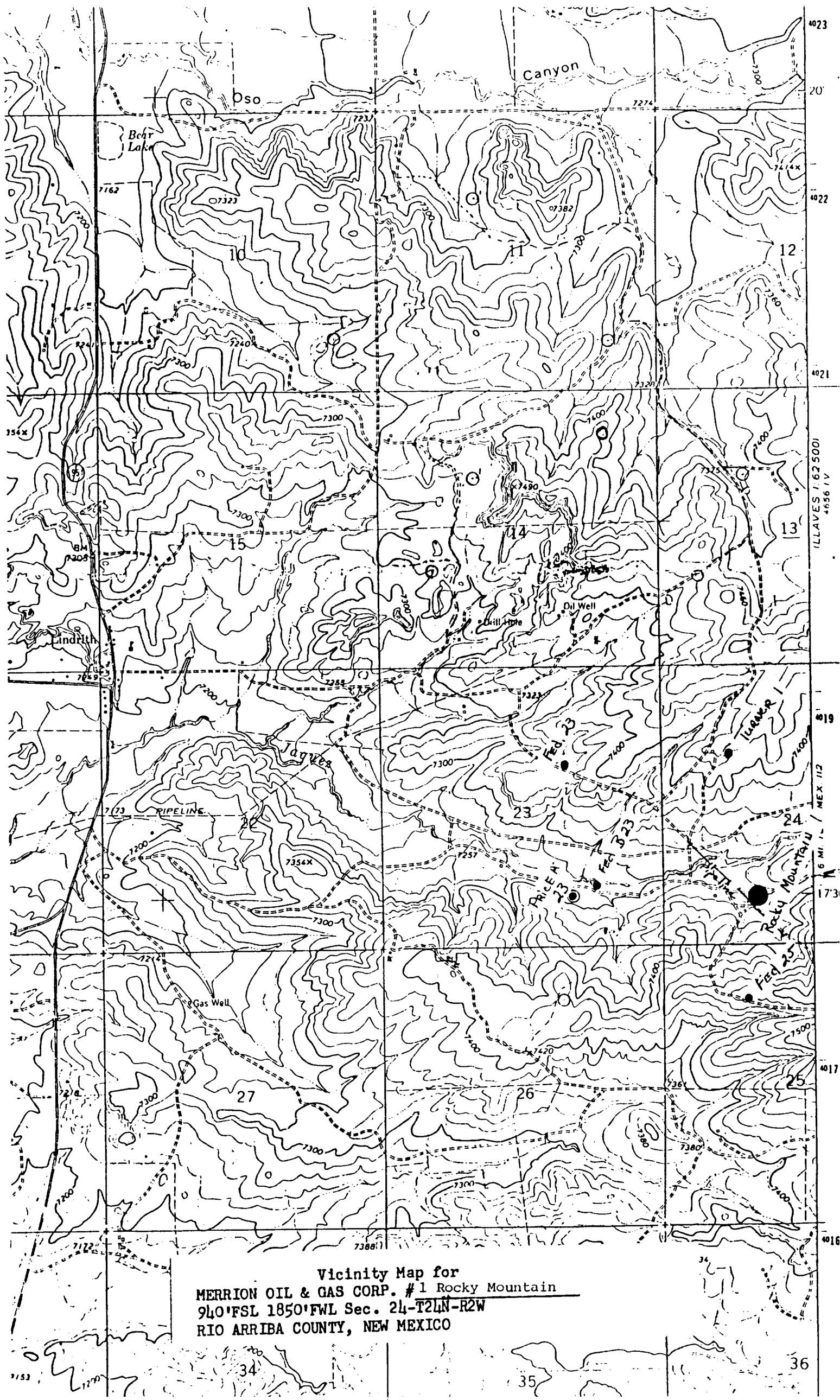
I hereby certify that the well location shown on this plat was plotted from field notes of actual surveys made by me or under my supervision, and that the same is true and correct to the best of my knowledge and belief.

Date Surveyed
September 15, 1984

Registered Professional Engineer and Land Surveyor

Fred E. Kerr Jr.
Fred E. Kerr Jr.

Certificate No. **3950**



Vicinity Map for
MERRION OIL & GAS CORP. #1 Rocky Mountain
940' FSL 1850' FWL Sec. 24-T24N-R2W
RIO ARriba COUNTY, NEW MEXICO