

UNITED STATES
DEPARTMENT OF THE INTERIOR
BUREAU OF LAND MANAGEMENT

APPLICATION FOR PERMIT TO DRILL, DEEPEN, OR PLUG BACK

1a. TYPE OF WORK DRILL ☒ DEEPEN ☐ PLUG BACK ☐

b. TYPE OF WELL
OIL WELL ☒ GAS WELL ☐ OTHER ☐
SINGL. ZONE ☐ MULTIPLE ZONE ☐

2. NAME OF OPERATOR
Southland Royalty Company

3. ADDRESS OF OPERATOR
P.O. Drawer 570, Farmington, New Mexico 87499

4. LOCATION OF WELL (Report location clearly and in accordance with any State Requirements.)
At surface (C) 980' FNL & 1950' FWL

At proposed prod. zone

14. DISTANCE IN MILES AND DIRECTION FROM NEAREST TOWN OR POST OFFICE*
10 miles West of Lindrith, New Mexico

15. DISTANCE FROM PROPOSED*
LOCATION TO NEAREST
PROPERTY OR LEASE LINE, FT.
(Also to nearest drig. unit line, if any)
980'

18. DISTANCE FROM PROPOSED LOCATION*
TO NEAREST WELL, DRILLING, COMPLETED,
OR APPLIED FOR, ON THIS LEASE, FT.
2400'

16. NO. OF ACRES IN LEASE
2560

19. PROPOSED DEPTH
7606'

17. NO. OF ACRES ASSIGNED
TO THIS WELL
160

20. ROTARY OR CABLE TOOLS
Rotary

21. ELEVATIONS (Show whether DF, RT, GR, etc.)
7100' GL
DRILLING OPERATIONS AUTHORIZED ARE
SUBJECT TO COMPLIANCE WITH ATTACHED

22. APPROX. DATE WORK WILL START*
May 15, 1985

23. PROPOSED CEMENTING PROGRAM

SIZE OF HOLE	SIZE OF CASING	WEIGHT PER FOOT	SETTING DEPTH	QUANTITY OF CEMENT
12-1/4"	New 8-5/8"	24#, K-55	200'	165 cu.ft. - Circulate to surface
7-7/8"	New 4-1/2"	10.5#, K-55	0-7000'	Stge 1: 510 cuft (Cover Gallup)
7-7/8"	New 4-1/2"	11.6#, K-55	7000'-7606'	Stge 2: 345 cuft (Cover Cliff House)
				Stge 3: 356 cuft (Cover Ojo Alamo)

Surface formation is San Jose.
Top of Ojo Alamo sand is at 2431'.
Top of Pictured Cliffs sand is at 3101'.
Fresh water mud will be used to drill from surface to total depth.
It is anticipated that an IES and GR-Density Logs will be run at total depth.
No abnormal pressures or poisonous gases are anticipated in this well.
It is expected that this well will be drilled before July 1, 1985.
This depends on time required for approvals, rig availability and the weather.
Gas is dedicated.

This action is subject to technical and
procedural review pursuant to 43 CFR 3165.3
and appeal pursuant to 43 CFR 3165.4.

IN ABOVE SPACE DESCRIBE PROPOSED PROGRAM: If proposal is to deepen or plug back, give data on present productive zone and proposed new productive zone. If proposal is to drill or deepen directionally, give pertinent data on subsurface locations and measured and true vertical depths. Give blowout preventer program, if any.

24. SIGNED [Signature] TITLE Dist. operations Engineer DATE April 24, 1985 (REV)
(This space for Federal or State office use)
PERMIT NO. APPROVAL DATE
APPROVED BY TITLE DATE MAY 24 1985
CONDITIONS OF APPROVAL, IF ANY: (SGD.) MAT MILLENBACH
AREA MANAGER

*See Instructions On Reverse Side

OIL CONSERVATION DIVISION

P. O. BOX 2088
SANTA FE, NEW MEXICO 87501

Form C-107
Revised 10-1-78

All distances must be from the outer boundaries of the Section.

Operator SOUTHLAND ROYALTY COMPANY			Lease MEDIO CANYON		Well No. 8
Unit Letter C	Section 25	Township 24N	Range 4W	County Rio Arriba	
Actual Footage Location of Well: 980 feet from the North line and 1950 feet from the West line					
Ground Level Elev: 7100' GL	Producing Formation Gallup-Dakota		Pool West Lindrith		Dedicated Acreage 160 Acres

1. Outline the acreage dedicated to the subject well by colored pencil or hachure marks on the plat below.
2. If more than one lease is dedicated to the well, outline each and identify the ownership thereof (both as to working interest and royalty).
3. If more than one lease of different ownership is dedicated to the well, have the interests of all owners been consolidated by communitization, unitization, force-pooling, etc?

☐ Yes ☐ No If answer is "yes," type of consolidation _____

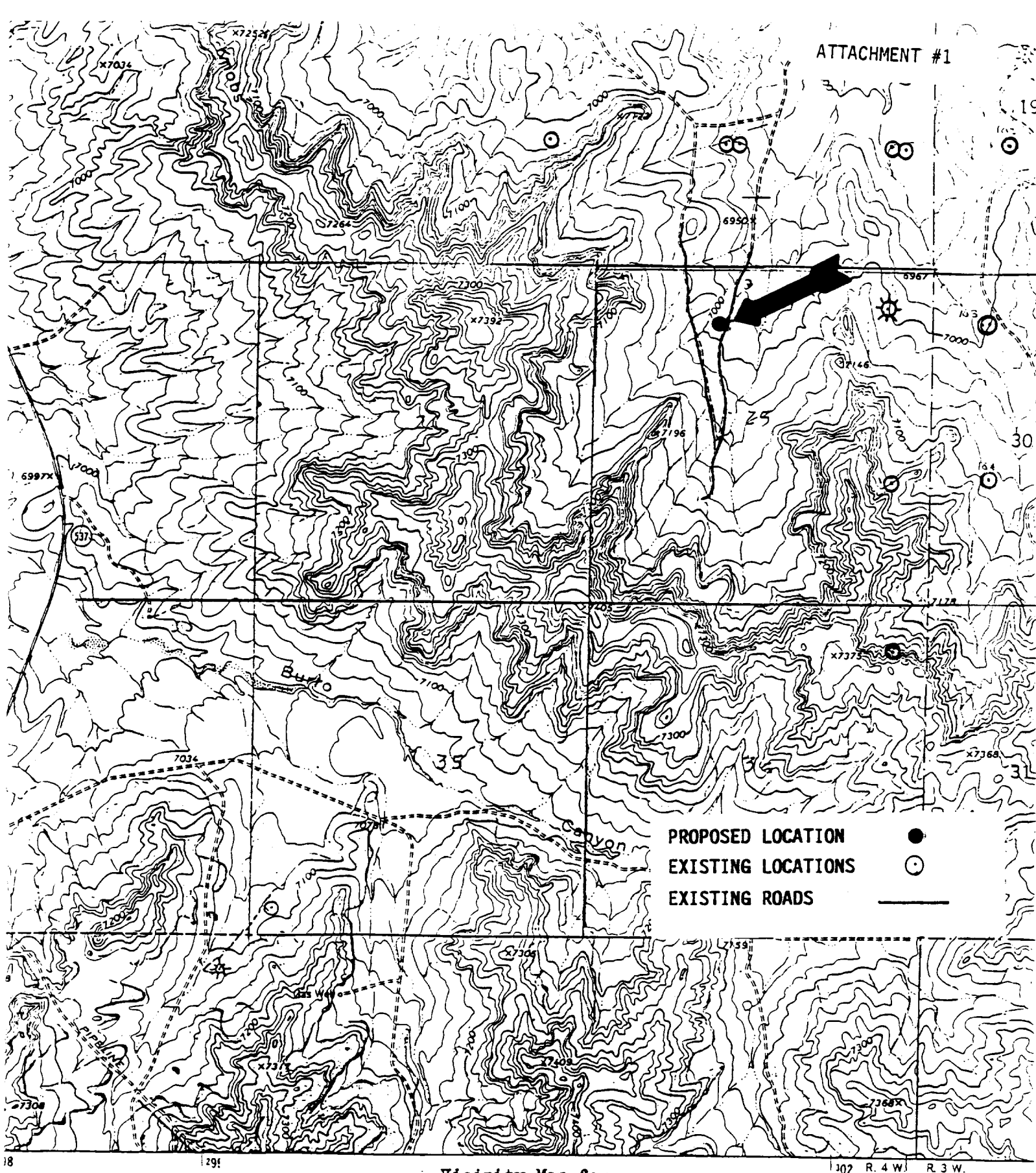
If answer is "no," list the owners and tract descriptions which have actually been consolidated. (Use reverse side of this form if necessary.) _____

No allowable will be assigned to the well until all interests have been consolidated (by communitization, unitization, forced-pooling, or otherwise) or until a non-standard unit, eliminating such interests, has been approved by the Commission.

<p>J I C A R I E L L A 416</p> <p>Sec.</p>			
<p>25</p>		<p>RECEIVED</p> <p>APR 26 1985</p> <p>BUREAU OF LAND MANAGEMENT FARMINGTON RESOURCE AREA</p>	

Scale: 1"=1000'

<p>CERTIFICATION</p> <p>I hereby certify that the information contained herein is true and complete to the best of my knowledge and belief.</p> <p><i>C. Terry Hobbs</i></p>	
Name	C. Terry Hobbs
Position	District Operations Engineer
Company	Southland Royalty Company
Date	April 22, 1985
<p>I hereby certify that the well location shown on this plat was plotted from field notes of actual surveys made by me or under my supervision, and that the same is true and correct to the best of my knowledge and belief.</p>	
Date Surveyed	November 19, 1984
Registered Professional Engineer and Land Surveyor	<i>Fred B. Kerr Jr.</i>
Certificate No.	3950



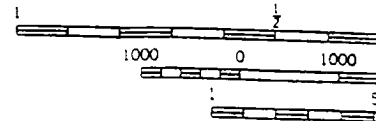
d. edited, and published by
 by USGS and USC&GS

by photogrammetric methods from
 photos taken 1958 and 1962 Field checked 1963

projection 1927 North American datum
 foot grid based on New Mexico coordinate system, central zone
 after Universal Transverse Mercator grid ticks,
 shown in blue

(dashed lines indicate selected)

Vicinity Map for
 SOUTHLAND ROYALTY COMPANY #8 MEDIO CANYON
 980' FNL 1950' FWL Sec. 25-T2LN-RLW
 RIO ARriba COUNTY, NEW MEXICO



1" = 18' 23 MILS
 13 1/4" = 240 MILS