

(Other instructions on reverse side)

Project Number No. 42 H1425.


**1e. TYPE OF WORK**

**DRILL** 

DEEPEN ☐

PLUG BACK ☐

#### 17. TYPE OF WELL

**OIL  
WELL** 

**GAS WELL** ☐

**OTHER**

**SINGLE  
ZONE**

**MULTIPLE  
ZONE**

**2. NAME OF OPERATOR**

COTTON PETROLEUM CORPORATION

### 3. ADDRESS OF OPERATOR

3773 CHERRY CREEK DRIVE NORTH #750, DENVER, CO 80209

4. LOCATION OF WELL (Report location clearly and in accordance with any State requirements.)  
At surface

400' FNL      700' FWL

At proposed prod. zone

14. DISTANCE IN MILES AND DIRECTION FROM NEAREST TOWN OR POST OFFICE\*

13. DISTANCE FROM PROPOSED\*  
LOCATION TO NEAREST  
PROPERTY OR LEASE LINE, FT.  
(Also to nearest drlg. unit line, if any)

13. DISTANCE FROM PROPOSED LOCATION\*  
TO NEAREST WELL, DRILLING, COMPLETED,  
OR APPLIED FOR, ON THIS LEASE, FT.

21. ELEVATIONS (Show whether DF, RT, GR, etc.)  
6806'

23.

DRILLING OPERATIONS AUTHORIZED ARE  
SUBJECT TO COMPLIANCE WITH ATTACHED

~~"GENERAL REQUIREMENTS"~~

## PROPOSED CASING AND CEMENTING PROGRAM

160 Jnt w/Apache 109

20. ROTARY OR CABLE TOOLS

ROTARY

22. APPROX. DATE WORK WILL START\*  
10/7/85

This action is subject to technical and procedural review pursuant to 43 CFR 3165.3 and appeal pursuant to 43 CFR 3165.4.

300 SXS  
1300 SXS OR SUFFICIENT VOLUME  
TO COVER OJO ALAMO AT APPROX.  
2424'

SIZE OF HOLE	SIZE OF CASING	WEIGHT PER FOOT	SETTING DEPTH
12-1/4"	8-5/8"	24#	380'
7-7/8"	4-1/2"	10.5#	7408'

- A. LOCATION PLAT
- B. DRILLING PROGNOSIS
- C. SURFACE USE PLAN
- C1. PRODUCTION CASING CEMENT
- C2. SURFACE CASING CEMENT
- D. SCHEMATIC DIAGRAM OF RIG  
BOP & MANIFOLD
- E. BOP TEST PROCEDURE
- F. RIG LAYOUT
- F1. INVENTORY
- G. EXISTING & PLANNED ACCESS  
ROADS
- H. EXISTING WELLS - 1 MILE RADIUS

- I. EXISTING OR PROPOSED FACILITIES - 1 MILE  
- RADIUS
- J. DETAILED LOCATION PLAT OF PRODUCTION  
FACILITIES
- K. WELL SITE LAYOUT
- L. DRILL PAD LAYOUT WITH ELEVATIONS
- LI. CROSS SECTIONS OF PLANNED CUT & FILL  
ACROSS LOCATION
- M. LEASE SEPCIAL STIPULATIONS

IN ABOVE SPACE DESCRIBE PROPOSED PROGRAM: If proposal is to deepen or plug back, give data on present productive zone and proposed new productive zone. If proposal is to drill or deepen directionally, give pertinent data on subsurface locations and measured and true vertical depths. Give blowout preventer program, if any.

24. SIGNED [Signature] TITLE DIVISION PRODUCTION MGR. DATE SEPTEMBER 17, 1985

(This space for Federal or State office use)

PERMIT NO.

**APPROVAL DATE**

APPROVED BY \_\_\_\_\_  
CONDITIONS OF APPROVAL, IF ANY:

**TITLE**

APPROVED  
AS AMENDED  
DATE

OCT 08 1985

OCT 08 1985  
(000) MAT MILLENBACH  
M. MILLENBACH  
AREA MANAGER

NMOCs

NEW MEXICO OIL CONSERVATION COMMISSION  
WELL LOCATION AND ACREAGE DEDICATION PLAT

Form C-102  
Supersedes C-128  
Effective 1-1-65

All distances must be from the outer boundaries of the Section.

Operator <b>COTTON PETROLEUM CORP.</b>			Lease <b>APACHE</b>		Well No. <b>158</b>
Unit: Letter <b>D</b>	Section <b>11</b>	Township <b>24N</b>	Range <b>4W</b>	County <b>Rio Arriba</b>	
Actual Footage Location of Well: <b>400</b> feet from the <b>North</b> line and <b>700</b> feet from the <b>West</b> line					
Ground Level Elev: <b>6806</b>	Producing Formation <b>Gallup Dakota</b>		Pool <b>Lindrith Gallup Dakota W.</b>		Dedicated Acreage: <b>160</b> Acres

1. Outline the acreage dedicated to the subject well by colored pencil or hatchure marks on the plat below.
2. If more than one lease is dedicated to the well, outline each and identify the ownership thereof (both as to working interest and royalty).
3. If more than one lease of different ownership is dedicated to the well, have the interests of all owners been consolidated by communitization, unitization, force-pooling, etc?

☐ Yes ☐ No If answer is "yes," type of consolidation \_\_\_\_\_

If answer is "no," list the owners and tract descriptions which have actually been consolidated. (Use reverse side of this form if necessary.) \_\_\_\_\_

No allowable will be assigned to the well until all interests have been consolidated (by communitization, unitization, forced-pooling, or otherwise) or until a non-standard unit, eliminating such interests, has been approved by the Commission.

Ed. 700' 400'	Sec.	RECEIVED SEP 20 1985 BUREAU OF LAND MANAGEMENT FARMINGTON RESOURCE AREA
		RECEIVED OCT 10 1985 OIL CON. DIV DIST. 3
11		

CERTIFICATION

I hereby certify that the information contained herein is true and complete to the best of my knowledge and belief.

Name

Position  
Division Production Manager

Company  
Cotton Petroleum Corporation

Date  
September 17, 1985

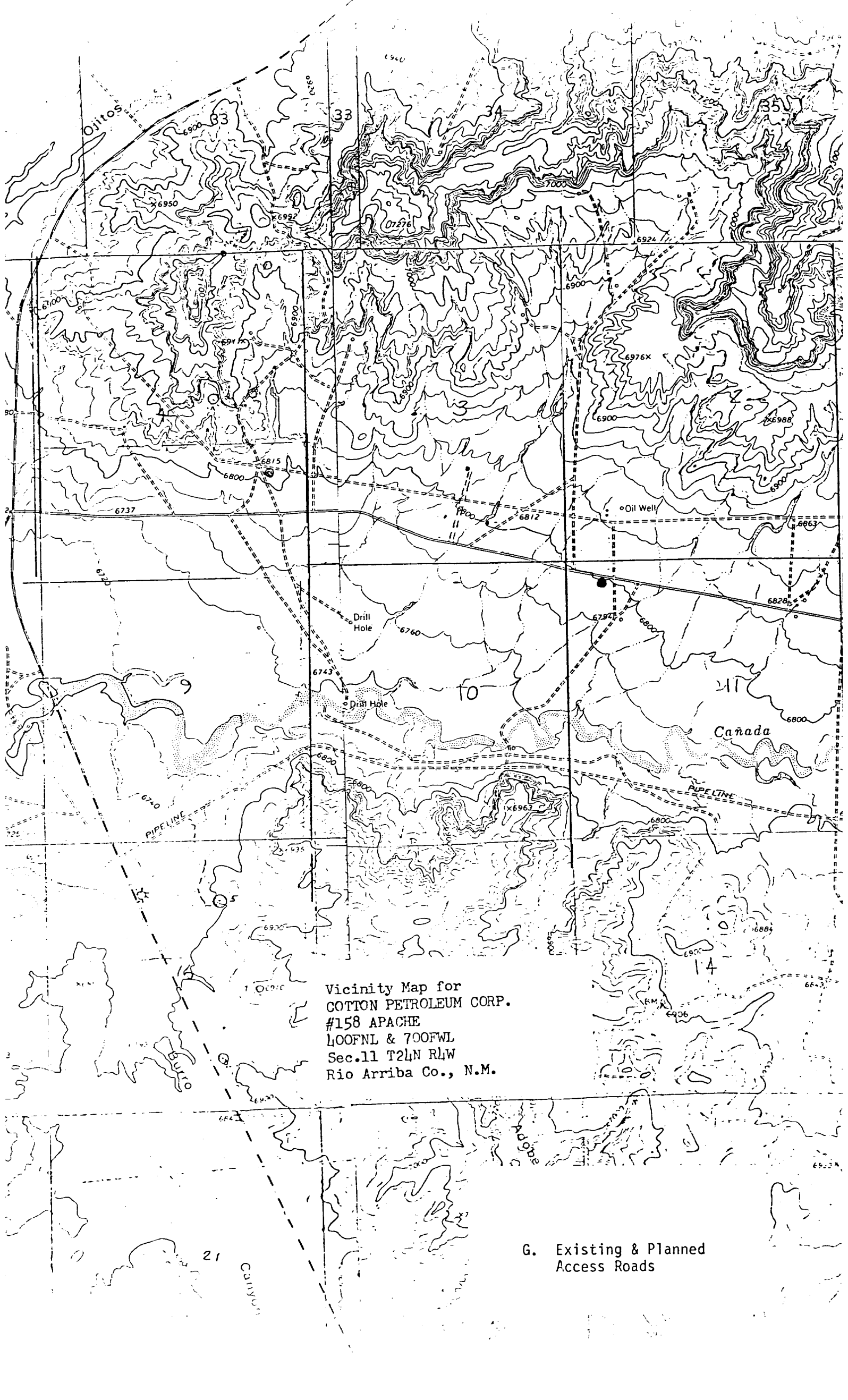
I hereby certify that the well location shown on this plat was plotted from field notes of actual surveys made by me or under my supervision, and that the same is true and correct to the best of my knowledge and belief.

Date Surveyed

Willam E. Mahoney

Registered Professional Engineer  
and Land Surveyor #8466

Certificate No.



Vicinity Map for  
COTTON PETROLEUM CORP.  
#158 APACHE  
L00FNL & 700FWL  
Sec.11 T24N RLW  
Rio Arriba Co., N.M.

G. Existing & Planned  
Access Roads