

UNITED STATES
DEPARTMENT OF THE INTERIOR
GEOLOGICAL SURVEY

(Other instructions on
reverse side)

30-039-23930

APPLICATION FOR PERMIT TO DRILL, DEEPEN, OR PLUG BACK

1a. TYPE OF WORK

DRILL ☒

DEEPEN ☐

PLUG BACK ☐

b. TYPE OF WELL

OIL
WELL ☒

GAS
WELL ☐

OTHER

SINGLE
ZONE ☒

MULTIPLE
ZONE ☐

2. NAME OF OPERATOR

COTTON PETROLEUM CORPORATION

3. ADDRESS OF OPERATOR

3773 CHERRY CREEK DRIVE NORTH #750, DENVER, CO 80209

4. LOCATION OF WELL (Report location clearly and in accordance with State requirements.)

At surface

645' FNL 2225' FWL

At proposed prod. zone

14. DISTANCE IN MILES AND DIRECTION FROM NEAREST TOWN OR POST OFFICE*

BUREAU OF LAND MANAGEMENT
FARMINGTON RESOURCE AREA

15. DISTANCE FROM PROPOSED*

LOCATION TO NEAREST
PROPERTY OR LEASE LINE, FT.
(Also to nearest drig. unit line, if any)

16. NO. OF ACRES IN LEASE

2665

17. NO. OF ACRES ASSIGNED
TO THIS WELL

225.3 Jnt w/Apache 1034 150

18. DISTANCE FROM PROPOSED LOCATION*

TO NEAREST WELL, DRILLING, COMPLETED,
OR APPLIED FOR, ON THIS LEASE, FT.

19. PROPOSED DEPTH

7658'

20. ROTARY OR CABLE TOOLS

ROTARY

21. ELEVATIONS (Show whether DF, RT, GR, etc.)

6996'

DRILLING OPERATIONS AUTHORIZED ARE
SUBJECT TO COMPLIANCE WITH ATTACHED

22. APPROX. DATE WORK WILL START*

10/7/85

23.

"GENERAL REQUIREMENTS"
PROPOSED CASING AND CEMENTING PROGRAM

This action is subject to technical and
procedural review pursuant to 43 CFR 3165.3
and appeal pursuant to 43 CFR 3165.4.

SIZE OF HOLE	SIZE OF CASING	WEIGHT PER FOOT	SETTING DEPTH	
12-1/4"	8-5/8"	24#	380'	300 SXS
7-7/8"	4-1/2"	10.5#	7658'	1300 SXS OR SUFFICIENT VOLUME TO COVER OJO ALAMO AT APPROX. 2674'

- A. LOCATION PLAT
- B. DRILLING PROGNOSIS
- C. SURFACE USE PLAN
- C1. PRODUCTION CASING CEMENT
- C2. SURFACE CASING CEMENT
- D. SCHEMATIC DIAGRAM OF RIG
BOP & MANIFOLD
- E. BOP TEST PROCEDURE
- F. RIG LAYOUT
- F1. INVENTORY
- G. EXISTING & PLANNED ACCESS
ROADS
- H. EXISTING WELLS - 1 MILE RADIUS

- I. EXISTING OR PROPOSED FACILITIES - 1 MILE
- RADIUS
- J. DETAILED LOCATION PLAT OF PRODUCTION
FACILITIES
- K. WELL SITE LAYOUT
- L. DRILL PAD LAYOUT WITH ELEVATIONS
- L1. CROSS SECTIONS OF PLANNED CUT & FILL
ACROSS LOCATION
- M. LEASE SEPICAL STIPULATIONS

IN ABOVE SPACE DESCRIBE PROPOSED PROGRAM: If proposal is to deepen or plug back, give data on present productive zone and proposed new productive zone. If proposal is to drill or deepen directionally, give pertinent data on subsurface locations and measured and true vertical depths. Give blowout preventer program, if any.

24.

SIGNED

DIVISION PRODUCTION MGR.

DATE SEPTEMBER 17, 1985

(This space for Federal or State office use)

PERMIT NO.

NOV 14 1985

APPROVAL DATE

APPROVED BY

CONDITIONS OF APPROVAL, IF ANY:

OIL CON. DIV.
DIST. 3

APPROVED
AS AMENDED

DATE

NOV 08 1985

J. Stan McKee

NMOCC

M. MILLENBACH
AREA MANAGER

NEW MEXICO OIL CONSERVATION COMMISSION
WELL LOCATION AND ACREAGE DEDICATION PLAT

Form C-102
Supersedes C-128
Effective 1-1-65

All distances must be from the outer boundaries of the Section.

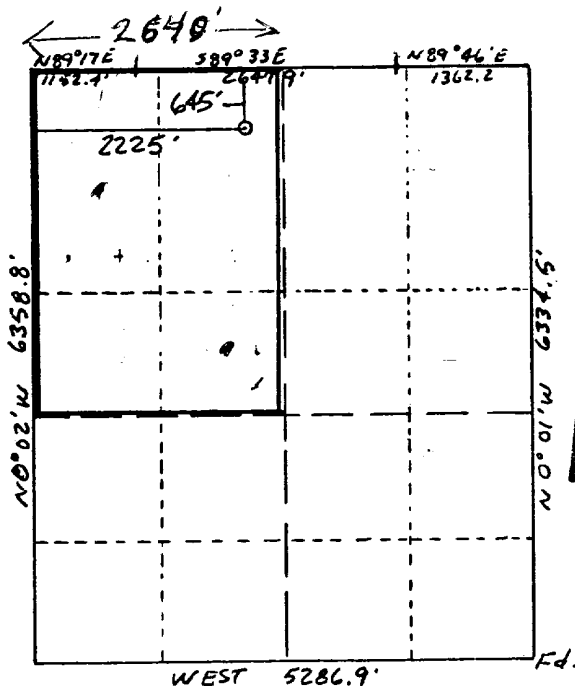
Operator COTTON PETROLEUM CORP.			Lease APACHE		Well No. 156
Unit Letter C	Section 3	Township 24N	Range 4W	County Rio Arriba	
Actual Footage Location of Well: 615 feet from the North line and 2225 feet from the West line					
Ground Level Elev. 6996	Producing Formation Gallup Dakota	Pool Lindrith Gallup Dakota W.	Dedicated Acreage: 225.3 Acres		

1. Outline the acreage dedicated to the subject well by colored pencil or hatchure marks on the plat below.
2. If more than one lease is dedicated to the well, outline each and identify the ownership thereof (both as to working interest and royalty).
3. If more than one lease of different ownership is dedicated to the well, have the interests of all owners been consolidated by communitization, unitization, force-pooling, etc?

☐ Yes ☐ No If answer is "yes," type of consolidation _____

If answer is "no," list the owners and tract descriptions which have actually been consolidated. (Use reverse side of this form if necessary.) _____

No allowable will be assigned to the well until all interests have been consolidated (by communitization, unitization, forced-pooling, or otherwise) or until a non-standard unit, eliminating such interests, has been approved by the Commission.



BUREAU OF LAND MANAGEMENT
FARMINGTON RESOURCE AREA

SEP 20 1985

RECEIVED

RECEIVED
NOV 14 1985
OIL CON. DIV.
DIST. 3

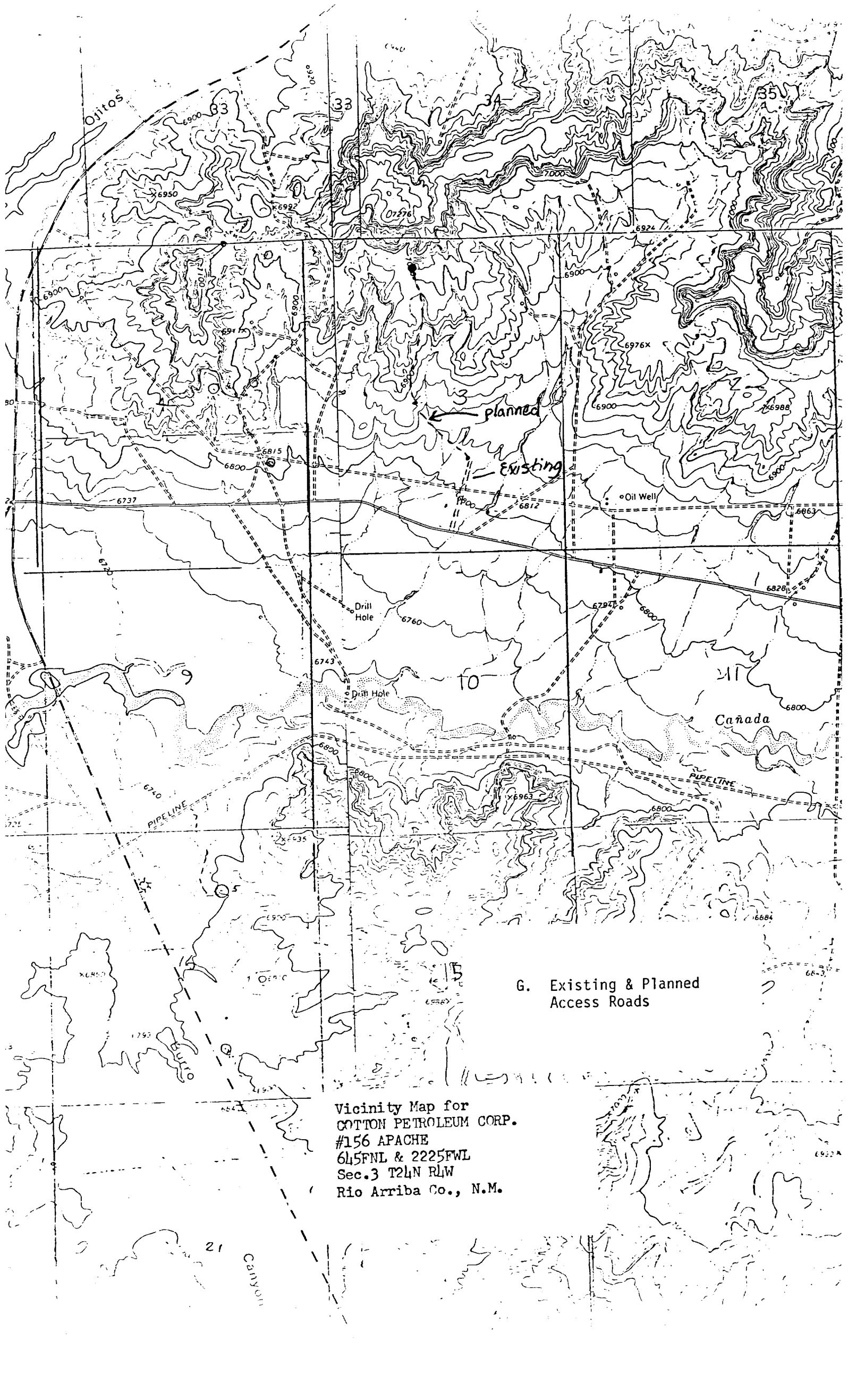
CERTIFICATION

I hereby certify that the information contained herein is true and complete to the best of my knowledge and belief.

Name _____
Position
Division Production Manager
Company
Cotton Petroleum Corporation
Date
September 17, 1985

I hereby certify that the well location shown on this plat was plotted from field notes of actual surveys made by me or under my supervision, and that the same is true and correct to the best of my knowledge and belief.

Date Surveyed _____
William E. Mahanke II
Registered Professional Engineer and Surveyor
Certificate No. 81466



G. Existing & Planned Access Roads

Vicinity Map for
COTTON PETROLEUM CORP.
#156 APACHE
645FNL & 2225FWL
Sec.3 T24N RLW
Rio Arriba Co., N.M.