

UNITED STATES
DEPARTMENT OF THE INTERIOR
GEOLOGICAL SURVEY

APPLICATION FOR PERMIT TO DRILL, DEEPEN, OR PLUG BACK

1a. TYPE OF WORK

DRILL ☒DEEPEN ☐PLUG BACK ☐

b. TYPE OF WELL

OIL
WELL ☒GAS
WELL ☐

OTHER

SINGLE
ZONE ☒MULTIPLE
ZONE ☐

2. NAME OF OPERATOR

Conoco Inc.

3. ADDRESS OF OPERATOR

P.O. Box 460, Hobbs, NM 88240

4. LOCATION OF WELL (Report location clearly and in accordance with any State requirements.*)

At surface

1785 1790' FNL + 725' FWL

Unit E

At proposed prod. zone

335'

14. DISTANCE IN MILES AND DIRECTION FROM NEAREST TOWN OR POST OFFICE*

15. DISTANCE FROM PROPOSED*

LOCATION TO NEAREST
PROPERTY OR LEASE LINE, FT.
(Also to nearest drlg. unit line, if any)18. DISTANCE FROM PROPOSED LOCATION*
TO NEAREST WELL, DRILLING, COMPLETED,
OR APPLIED FOR, ON THIS LEASE, FT.

21. ELEVATIONS (Show whether DF, RT, GR, etc.)

7370 7404' GL

16. NO. OF ACRES IN LEASE

2560

19. PROPOSED DEPTH

8300'

17. NO. OF ACRES ASSIGNED
TO THIS WELL

1600/63-36

20. ROTARY OR CABLE TOOLS

Rotary

22. APPROX. DATE WORK WILL START*

DRILLING OPERATIONS AUTHORIZED ARE

SUBJECT TO COMPLIANCE WITH ATTACHED

"GENERAL REQUIREMENTS"

SIZE OF HOLE	SIZE OF CASING	WEIGHT PER FOOT	SETTING DEPTH	QUANTITY OF CEMENT
11	8 5/8"	28 #	400'	Surface
7 7/8"	5 1/2"	15.5 #	8300'	Surface

It is proposed to drill a straight hole to a TD of 8300'
and complete as a W. Lindrith Gallup/Dakota well.
Attached are the Well Plan and Surface Use Plan.

IN ABOVE SPACE DESCRIBE PROPOSED PROGRAM: If proposal is to deepen or plug back, give data on present productive zone and proposed new productive zone. If proposal is to drill or deepen directionally, give pertinent data on subsurface locations and measured and true vertical depths. Give blowout preventer program, if any.

24.

SIGNED

D.F. Finney TITLE Adm. Supervisor

DATE 6/15/88

(This space for Federal or State office use)

PERMIT NO.

APPROVAL DATE

APPROVED BY

TITLE

CONDITIONS OF APPROVAL, IF ANY:

APPROVED
AS AMENDED
AUG 10 1988
AREA MANAGER

NMOCC

*See Instructions On Reverse Side

BLM-Farmington (6) File BIA-Dulce

NEW MEXICO OIL CONSERVATION COMMISSION
WELL LOCATION AND ACREAGE DEDICATION PLAT

Form C-102
Supersedes C-121
Effective 1-1-83

All distances must be from the outer boundaries of the Section.

Operator CONOCO INC.		Lease JICARILLA 20		Well No. 12	
Unit Letter E	Section 18	Township 25N	Range 4W	County Rio Arriba	
Actual Footage Location of Well:					
1785 feet from the North		line and 335 feet from the West		line	
Ground Level Elev. 7370	Producing Formation Gallup Dakota	Pool West Lindrith	Dedicated Acreage: 168/163.36 Acres		

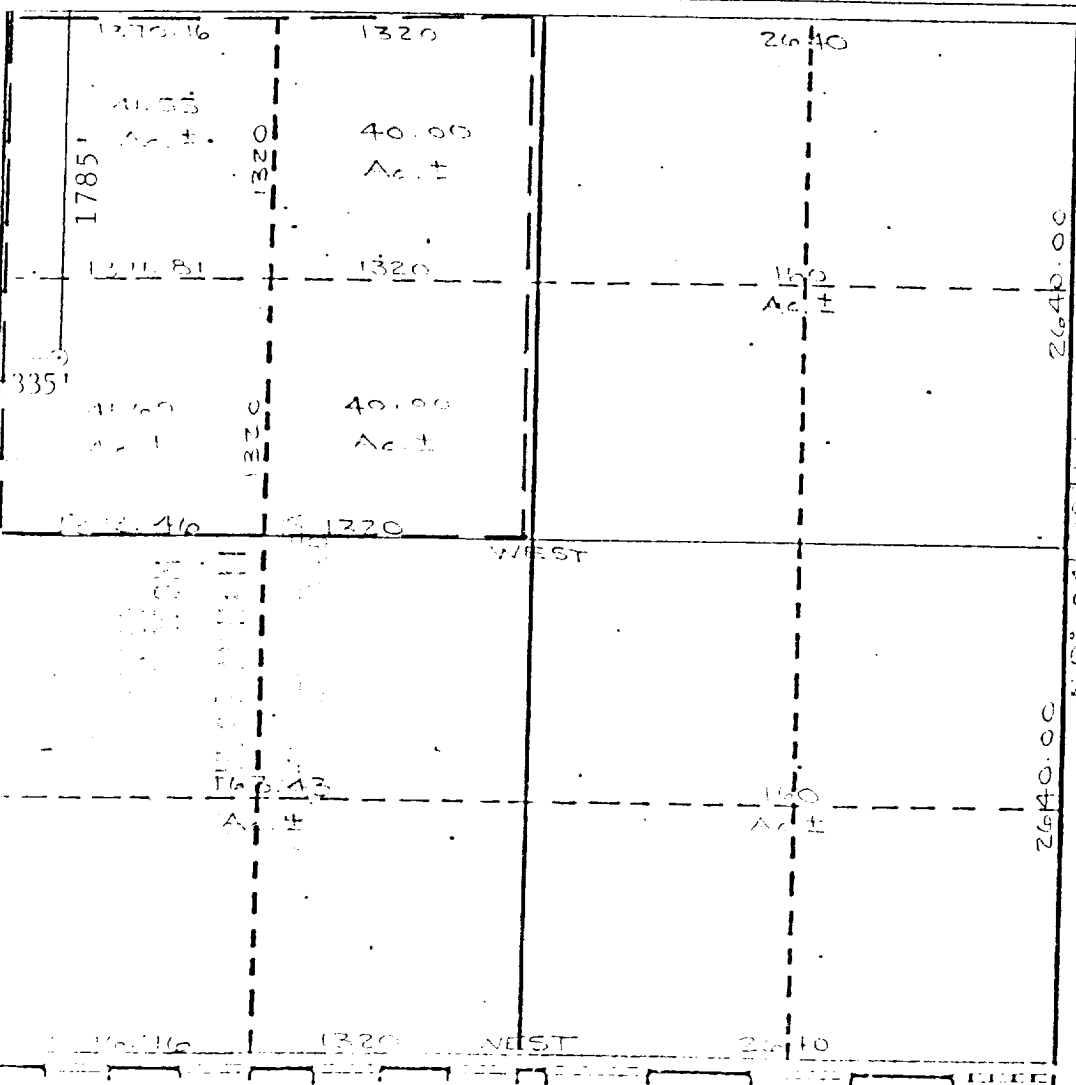
1. Outline the acreage dedicated to the subject well by colored pencil or hatchure marks on the plat below.
2. If more than one lease is dedicated to the well, outline each and identify the ownership thereof (both as to working interest and royalty).
3. If more than one lease of different ownership is dedicated to the well, have the interests of all owners been consolidated by communitization, unitization, force-pooling, etc?

☐ Yes ☐ No If answer is "yes," type of consolidation _____

If answer is "no," list the owners and tract descriptions which have actually been consolidated. (Use reverse side of this form if necessary.) _____

No allowable will be assigned to the well until all interests have been consolidated (by communitization, unitization, forced-pooling, or otherwise) or until a non-standard unit, eliminating such interests, has been approved by the Commission.

EAST

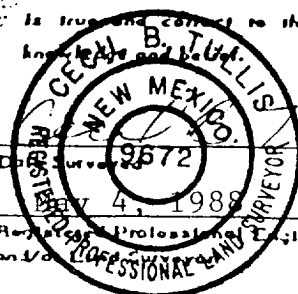


CERTIFICATION

I hereby certify that the information contained herein is true and complete to the best of my knowledge and belief.

Name *[Signature]* for D.F. Finne
Position Adm. Supervisor
Company Conoco Inc.
Date 7/19/88

I hereby certify that the well location shown on this plat was plotted from field notes of actual surveys made by me or under my supervision, and that the same is true and correct to the best of my knowledge and belief.



Cecil B. Tullis
Certification No. _____

9672

CONOCO INC. Jicarilla 20 #12
SW $\frac{1}{4}$, NW $\frac{1}{4}$ Sec. 18 T25N R4W N.M.P.M.
Rio Arriba Co. N.M.