

UNITED STATES  
DEPARTMENT OF THE INTERIOR  
BUREAU OF LAND MANAGEMENT

30-039-24640

APPLICATION FOR PERMIT TO DRILL, DEEPEN, OR PLUG BACK

1a. TYPE OF WORK  
 DRILL  DEEPEN  PLUG BACK

b. TYPE OF WELL  
 OIL WELL  GAS WELL  OTHER

2. NAME OF OPERATOR  
 JACK A. COLE

3. ADDRESS OF OPERATOR  
 P. O. BOX 191, FARMINGTON, NM 87499

4. LOCATION OF WELL (Report location clearly and in accordance with any State requirements.)\*  
 At surface 360' FNL & 1850' FEL  
 At proposed prod. zone SAME

14. DISTANCE IN MILES AND DIRECTION FROM NEAREST TOWN OR POST OFFICE\*  
 5 mile NE of Lybrook

15. DISTANCE FROM PROPOSED\* LOCATION TO NEAREST PROPERTY OR LEASE LINE, FT. (Also to nearest drlg. unit line, if any)  
 18. DISTANCE FROM PROPOSED LOCATION\* TO NEAREST WELL, DRILLING, COMPLETED, OR APPLIED FOR, ON THIS LEASE, FT.

16. NO. OF ACRES IN LEASE  
 2560

17. NO. OF ACRES ASSIGNED TO THIS WELL  
 40

19. PROPOSED DEPTH  
 5887

20. ROTARY OR CABLE TOOLS  
 ROTARY

21. ELEVATIONS (Show whether DF, RT, GR, etc.)  
 6963' GR

22. APPROX. DATE WORK WILL START\*  
 AS SOON AS POSSIBLE

5. LEASE DESIGNATION AND SERIAL NO.  
 SF 080202-D

6. IF INDIAN, ALLOTTEE OR TRIBE NAME

7. UNIT AGREEMENT NAME

8. FARM OR LEASE NAME  
 RINCON

9. WELL NO.  
 15

10. FIELD AND POOL, OR WILDCAT  
 LYBROOK GALLUP *cat*

11. SEC., T., R., M., OR BLK. AND SURVEY OR AREA  
 B  
 Sec. 35, T24N, R7W

12. COUNTY OR PARISH 13. STATE  
 RIO ARRIBA NM

PROPOSED CASING AND CEMENTING PROGRAM

| SIZE OF HOLE | SIZE OF CASING | WEIGHT PER FOOT | SETTING DEPTH | QUANTITY OF CEMENT |
|--------------|----------------|-----------------|---------------|--------------------|
| 12-1/4       | 8-5/8          | 24              | 250           | 250 sks            |
| 7-7/8        | 4-1/2          | 11.6            | 5887          | 800 sks            |

OPERATOR PLANS TO DRILL TO GALLUP FORMATION. ALL PRODUCING INTERVALS IN GALLUP WILL BE STIMULATED AS NECESSARY.

EXHIBITS:

- "A" LOCATION AND ELEVATION PLAT
- "B" TEN POINT COMPLIANCE PROGRAM
- "C" BLOWOUT PREVENTER DIAGRAM
- "D" MULTI-POINT REQUIREMENTS OF APD
- "E" ACCESS ROAD TO LOCATION
- "F" DRILLING RIG LAYOUT
- "G" COMPLETION RIG LAYOUT
- "H" LOCATION PROFILE
- "I" PRODUCTION FACILITIES LAYOUT

IN ABOVE SPACE DESCRIBE PROPOSED PROGRAM: If proposal is to deepen or plug back, give data on present productive zone and proposed new productive zone. If proposal is to drill or deepen directionally, give pertinent data on subsurface locations and measured and true vertical depths. Give blowout preventer program, if any.

SIGNED DeWayne Blancett TITLE PRODUCTION SUPERINTENDENT DATE SEPTEMBER 5, 1989  
 DEWAYNE BLANCETT

PERMIT NO. \_\_\_\_\_ APPROVAL DATE \_\_\_\_\_

APPROVED BY MAR 01 1990 TITLE \_\_\_\_\_  
 CONDITIONS OF APPROVAL, IF ANY:

**RECEIVED**

**APPROVED AS AMENDED**

**FEB 23 1990**  
 for John Skellan  
**AREA MANAGER**

**OIL CON. DIV.]**  
**DIST. 3**

\*See Instructions On Reverse Side

State of New Mexico  
Energy, Minerals and Natural Resources Department

Form C-102  
Revised 1-1-89

Submit to Appropriate  
District Office  
State Lease - 4 copies  
Fee Lease - 3 copies

**OIL CONSERVATION DIVISION**

P.O. Box 2088

Santa Fe, New Mexico 87504-2088

DISTRICT I  
P.O. Box 1980, Hobbs, NM 88240

DISTRICT II  
P.O. Drawer DD, Artesia, NM 88210

DISTRICT III  
1000 Rio Brazos Rd., Aztec, NM 87410

**WELL LOCATION AND ACREAGE DEDICATION PLAT**

All Distances must be from the outer boundaries of the section

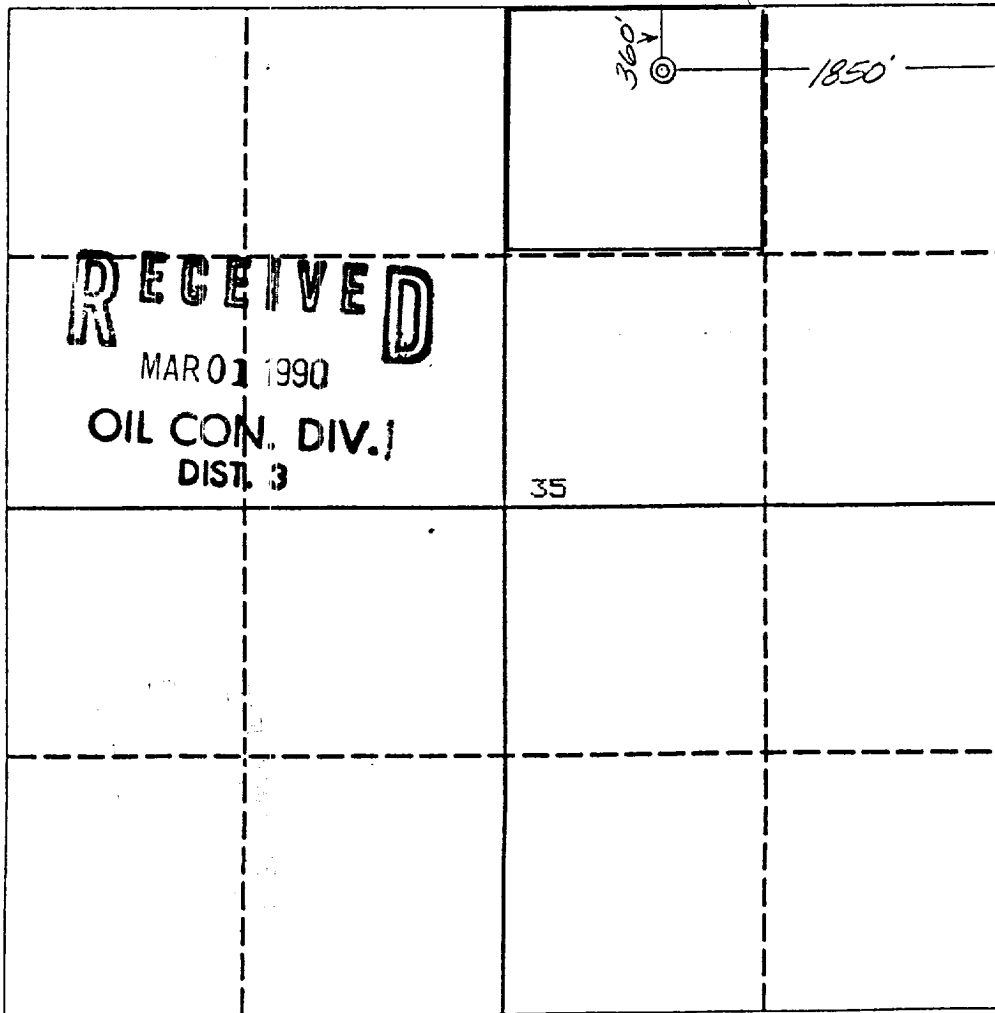
|   |                                      |                             |                               |      |                                       |
|---|--------------------------------------|-----------------------------|-------------------------------|------|---------------------------------------|
| Operator<br><b>JACK A. COLE</b>   |                                      |                             | Lease<br><b>RINCON</b>        |      | Well No.<br><b># 15</b>               |
| Unit Letter<br><b>B</b>   | Section<br><b>35</b>                 | Township<br><b>24 NORTH</b> | Range<br><b>7 WEST</b>        | NMPM | County<br><b>RIO ARRIBA</b>           |
| Actual Footage Location of Well:<br><b>360</b> feet from the <b>NORTH</b> line and <b>1850</b> feet from the <b>EAST</b> line |                                      |                             |                               |      |                                       |
| Ground level Elev.<br><b>6963</b>   | Producing Formation<br><b>GALLUP</b> |                             | Pool<br><b>LYBROOK GALLUP</b> |      | Dedicated Acreage:<br><b>40</b> Acres |

- Outline the acreage dedicated to the subject well by colored pencil or hatchure marks on the plat below.
- If more than one lease is dedicated to the well, outline each and identify the ownership thereof (both as to working interest and royalty).
- If more than one lease of different ownership is dedicated to the well, have the interest of all owners been consolidated by communitization, unitization, force-pooling, etc.?
 

Yes     No    If answer is "yes" type of consolidation \_\_\_\_\_

If answer is "no" list the owners and tract descriptions which have actually been consolidated. (Use reverse side of this form if necessary.) \_\_\_\_\_

No allowable will be assigned to the well until all interests have been consolidated (by communitization, unitization, forced-pooling, or otherwise) or until a non-standard unit, eliminating such interest, has been approved by the Division.



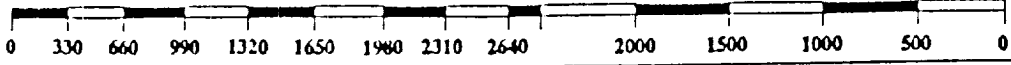
**OPERATOR CERTIFICATION**  
I hereby certify that the information contained herein is true and complete to the best of my knowledge and belief.

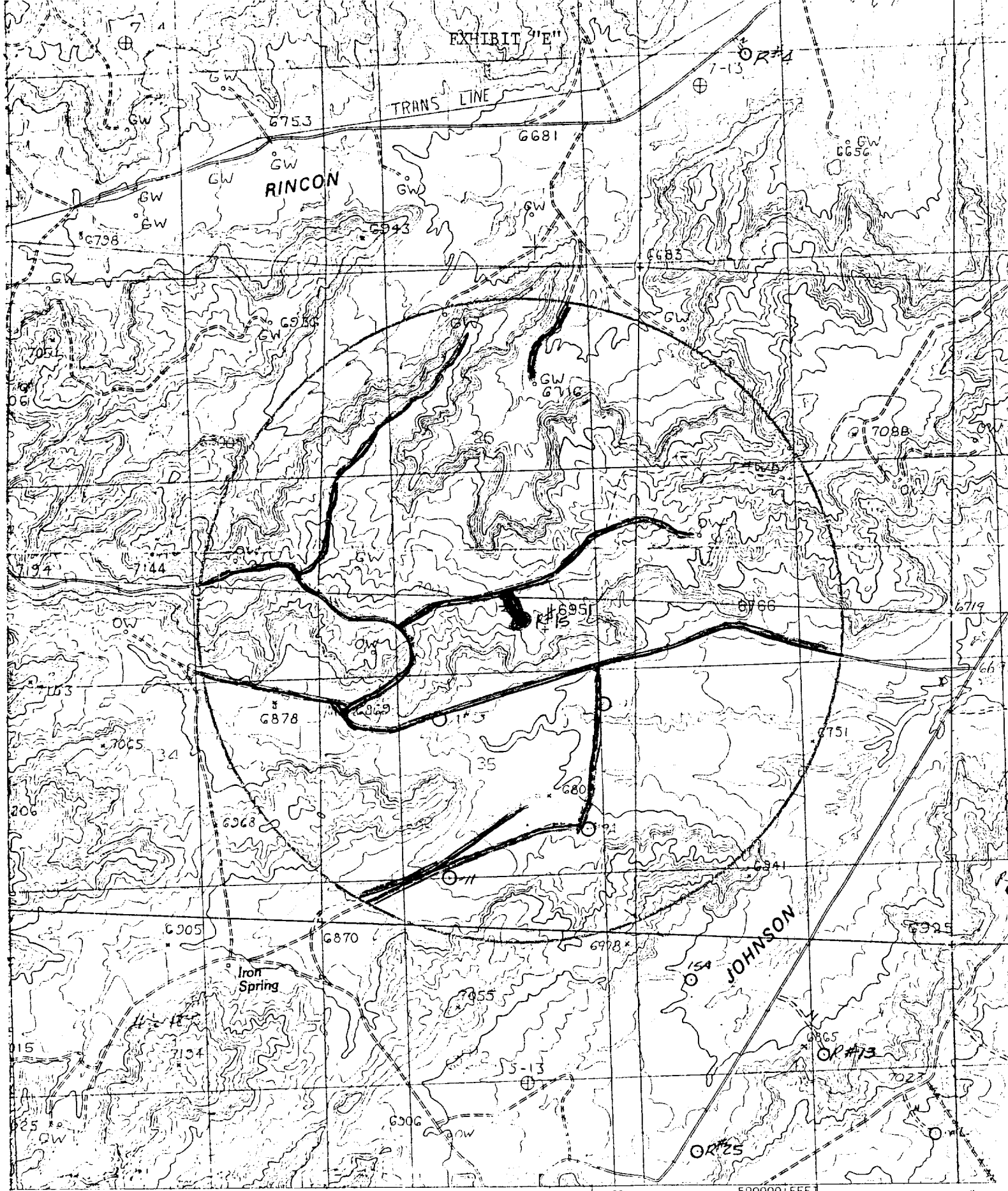
Signature: *Dewayne Blacett*  
Printed Name: **DEWAYNE BLANCETT**  
Position: **PRODUCTION SUPERINTENDENT**  
Company: **JACK A. COLE dba COLE PRODUCTION CO.**  
Date: **SEPTEMBER 5, 1989**

**SURVEYOR CERTIFICATION**  
I hereby certify that the well location shown on this plat was plotted from field notes of actual surveys made by me or under my supervision, and that the same is true and correct to the best of my knowledge and belief.

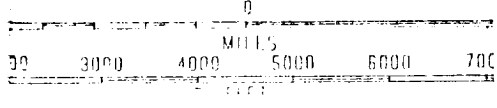
Date Surveyed: **August 23, 1989**

Signature & Seal of Professional Surveyor: *Gary D. Vann*  
Professional Surveyor No. **7016**  
Gary Vann  
7016





SCALE 1:24 000



JACK A. COLE  
 RINCON # 15  
 360' F/NL 1850'  
 SEC. 35, T24N, R7W,  
 RIO ARRIBA COUNTY,

F/EL  
 NMPM  
 NM



Unir