

UNITED STATES
DEPARTMENT OF THE INTERIOR
GEOLOGICAL SURVEY

APPLICATION FOR PERMIT TO DRILL, DEEPEN, OR PLUG BACK

1a. TYPE OF WORK

DRILL ☒DEEPEN ☐PLUG BACK ☐

b. TYPE OF WELL

OIL
WELL ☐GAS
WELL ☒OTHER ☐SINGLE
ZONE ☐MULTIPLE
ZONE ☐

2. NAME OF OPERATOR

APACHE CORPORATION

3. ADDRESS OF OPERATOR

2016 Lincoln Center Building, Denver, Colorado 80203

4. LOCATION OF WELL (Report location clearly and in accordance with any State requirements.*)

At surface

1650' FSL & 1650' FEL

At proposed prod. zone

Same

14. DISTANCE IN MILES AND DIRECTION FROM NEAREST TOWN OR POST OFFICE*

38 miles SE Bloomfield, New Mexico

15. DISTANCE FROM PROPOSED*

LOCATION TO NEAREST

PROPERTY OR LEASE LINE, FT.

(Also to nearest drlg. unit line, if any)

1650'

18. DISTANCE FROM PROPOSED LOCATION*

TO NEAREST WELL, DRILLING, COMPLETED,
OR APPLIED FOR, ON THIS LEASE, FT.

None

16. NO. OF ACRES IN LEASE

328.16

19. PROPOSED DEPTH

7000'

17. NO. OF ACRES ASSIGNED
TO THIS WELL

320

328.16

20. ROTARY OR CABLE TOOLS

Rotary

21. ELEVATIONS (Show whether DF, RT, GR, etc.)

7203 GR

22. APPROX. DATE WORK WILL START*

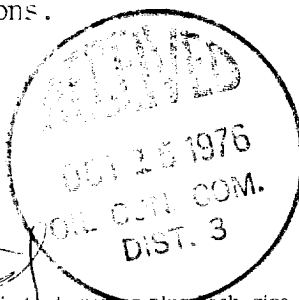
December 1, 1976

23

PROPOSED CASING AND CEMENTING PROGRAM

SIZE OF HOLE	SIZE OF CASING	WEIGHT PER FOOT	SETTING DEPTH	QUANTITY OF CEMENT
13-5/8"	9-5/8"	32.50#	300'	250 sx
8-5/4"	7"	23#	7000'	Cover all producing zones

1. Drill 13-5/8" hole to 300' and cement 9-5/8" casing to surface.
2. Drill 8-5/4" hole to 7000' using mud of good quality from 1800' to T.D.
3. All oil and gas shows will be evaluated by DST's and/or electric logs.
4. New casing will be cemented to protect all possible producing zones.
5. Should the well be non-productive, plugging operations will be performed according to federal regulations.



RECEIVED

OCT 13 1976

U. S. GEOLOGICAL SURVEY

IN ABOVE SPACE DESCRIBE PROPOSED PROGRAM: If proposal is to deepen or plug back, give data on present productive zone and proposed new productive zone. If proposal is to drill or deepen directionally, give pertinent data on subsurface locations and measured and true vertical depths. Give blowout preventer program, if any.

24.

SIGNED

TITLE Agent for Apache Corporation DATE

(This space for Federal or State office use)

PERMIT NO.

APPROVAL DATE

APPROVED BY

TITLE

DATE

CONDITIONS OF APPROVAL, IF ANY

**NEW MEXICO OIL CONSERVATION COMMISSION
WELL LOCATION AND ACERAGE DEDICATION PLAT**

All distances must be from the outer boundaries of the Section

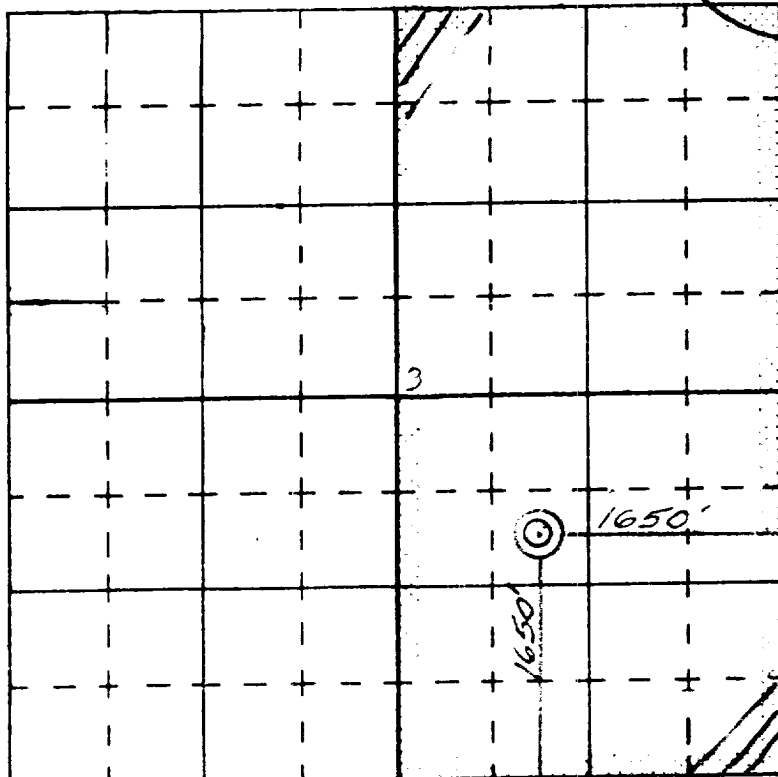
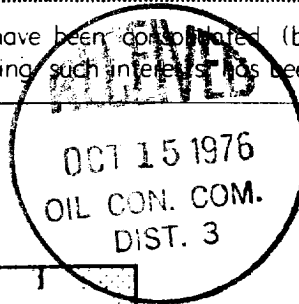
Operator APACHE CORPORATION			Lease APACHE CORP FEDERAL B APACHE FEDERAL		Well No 1
Unit Letter J	Section 3	Township 24 NORTH	Range 8 WEST	County SAN JUAN	
Actual Footage Location of Well: 1650 feet from the SOUTH line and 1650 feet from the EAST line					
Ground Level Elev. 7203	Producing Formation DAKOTA	Pool Basin - Dakota		Dedicated Acreage: 328.16 320 Acres	

1. Outline the acreage dedicated to the subject well by colored pencil or hatchure marks on the plat below.
2. If more than one lease is dedicated to the well, outline each and identify the ownership "hereof" (both as to working interest and royalty),
3. If more than one lease of different ownership is dedicated to the well, have the interests of all owners been consolidated by communitization, unitization, force-pooling, etc?

() Yes () No If answer is "yes," type of consolidation

If answer is "no," list the owners and tract descriptions which have actually consolidated. (Use reverse side of this form if necessary.)

No allowable will be assigned to the well until all interests have been consolidated (by communitization, unitization, forced-pooling, or otherwise) or until a non standard unit, eliminating such interests, has been approved by the Commission.



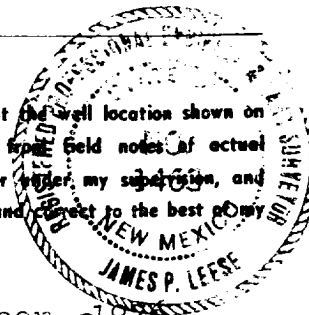
CERTIFICATION

I hereby certify that the information contained herein is true and complete to the best of my knowledge and belief.

Name **Allen H. Thomas**
 Position **Agent**
 Company **Apache Corp**
 Date **10-13-76**

I hereby certify that the well location shown on this plat was plotted from field notes of actual surveys made by me or under my supervision, and that the same is true and correct to the best of my knowledge and belief.

Date Surveyed **1 October 1976**
 Registered Professional Engineer
 and/or Land Surveyor **James P. Leese**



Certificate No. **1463**