

UNITED STATES  
DEPARTMENT OF THE INTERIOR  
GEOLOGICAL SURVEY

## APPLICATION FOR PERMIT TO DRILL, DEEPEN, OR PLUG BACK

## 1a. TYPE OF WORK

DRILL ☒DEEPEN ☐PLUG BACK ☐

## b. TYPE OF WELL

OIL  
WELL ☐GAS  
WELL ☒

OTHER

SINGLE  
ZONE ☒MULTIPLE  
ZONE ☐

## 2. NAME OF OPERATOR

Benson Mineral Group, Inc.

## 3. ADDRESS OF OPERATOR

3200 Anaconda Tower, 555 17th St., Denver, CO 80202

## 4. LOCATION OF WELL (Report location clearly and in accordance with any State requirements.\*)

At surface

1840' FSL &amp; 800' FWL Section 19-T24N-R10W

At proposed prod. zone

## 14. DISTANCE IN MILES AND DIRECTION FROM NEAREST TOWN OR POST OFFICE\*

11.5 miles northwest of Nageezi, New Mexico

## 15. DISTANCE FROM PROPOSED\*

LOCATION TO NEAREST

PROPERTY OR LEASE LINE, FT.

(Also to nearest drig. unit line, if any)

800

## 16. NO. OF ACRES IN LEASE

1431.56

17. NO. OF ACRES ASSIGNED  
TO THIS WELL

160 156.19

## 18. DISTANCE FROM PROPOSED LOCATION\*

TO NEAREST WELL, DRILLING, COMPLETED,  
OR APPLIED FOR, ON THIS LEASE, FT.

None

## 19. PROPOSED DEPTH

1850

## 20. ROTARY OR CABLE TOOLS

Rotary

## 21. ELEVATIONS (Show whether DF, RT, GR, etc.)

6503 GR.

## 22. APPROX. DATE WORK WILL START\*

As soon as permitted

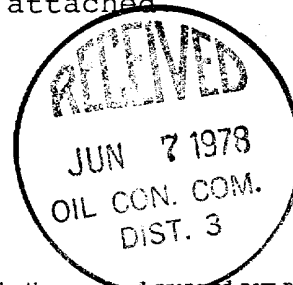
## 23.

## PROPOSED CASING AND CEMENTING PROGRAM

SIZE OF HOLE	SIZE OF CASING	WEIGHT PER FOOT	SETTING DEPTH	QUANTITY OF CEMENT
12 1/4	7" used	23	100	100 sax circ.
6 1/4	4 1/2" new	9.5	1850	200 sax circ.

The above well is being drilled to evaluate the Chacra formation. Completion intervals and stimulation program will be determined from the study of logs. This acreage is not dedicated to a gas purchaser. Additional information required by NTL-6 for the application to drill and a Multi-Point Surface Use Plan are attached.

RECEIVED



IN ABOVE SPACE DESCRIBE PROPOSED PROGRAM: If proposal is to deepen or plug back, give data on present productive zone and proposed new productive zone. If proposal is to drill or deepen directionally, give pertinent data on subsurface locations and measured and true vertical depths. Give blowout preventer program, if any.

## 24.

SIGNED

Paul C. Ellison

TITLE Production Manager

DATE June 2, 1978

(This space for Federal or State office use)

PERMIT NO.

APPROVAL DATE

APPROVED BY

TITLE

DATE

CONDITIONS OF APPROVAL, IF ANY:

\*See Instructions On Reverse Side

NEW MEXICO OIL CONSERVATION COMMISSION  
WELL LOCATION AND ACREAGE DEDICATION PLAT

Form C-102  
Supersedes C-128  
Effective 1-1-65

All distances must be from the outer boundaries of the Section.

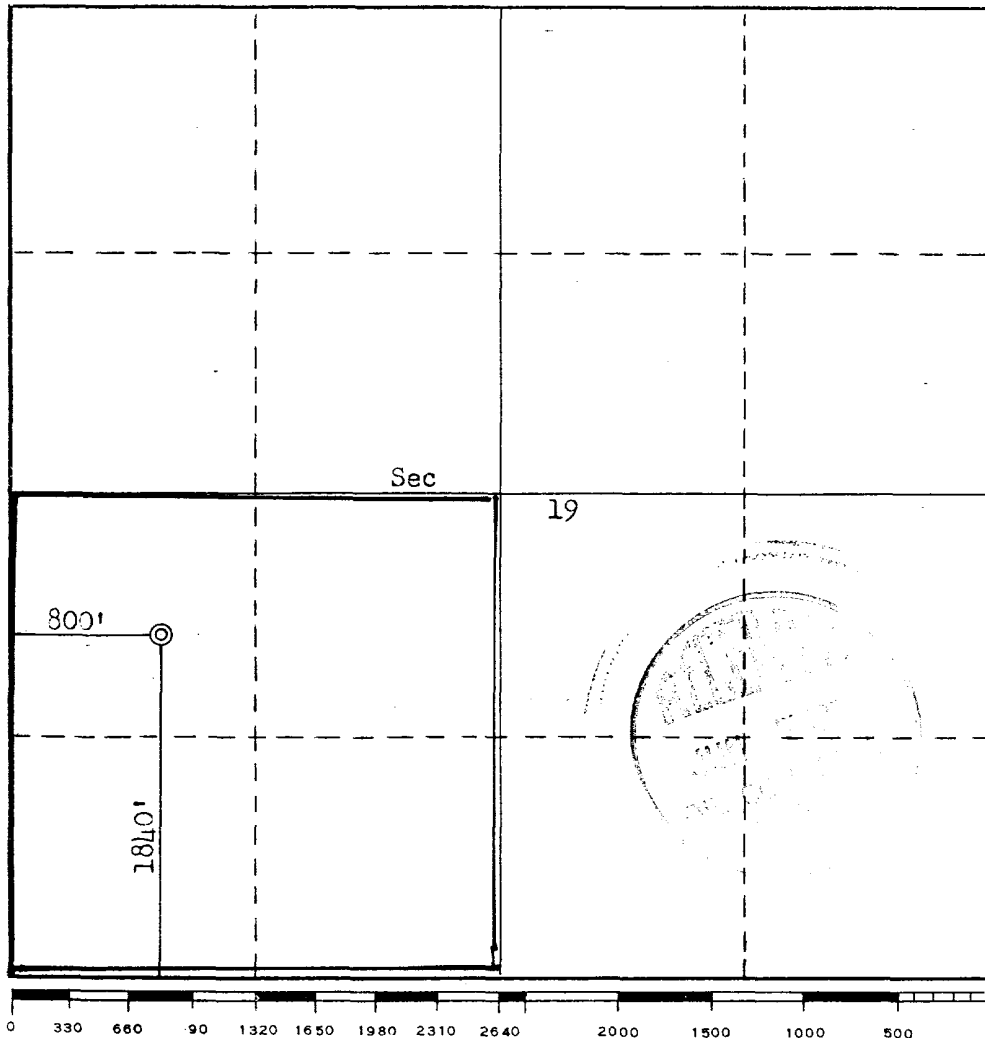
Operator <b>BENSON MINERAL GROUP, INC.</b>			Lease <b>FEDERAL 19-24-10</b>		Well No. <b>1</b>
Unit Letter <b>L</b>	Section <b>19</b>	Township <b>24N</b>	Range <b>10W</b>	County <b>San Juan</b>	
Actual Footage Location of Well: <b>1840</b> feet from the <b>South</b> line and <b>800</b> feet from the <b>West</b> line					
Ground Level Elev. <b>6503</b>	Producing Formation <b>Chacra</b>		Pool <b>Wildcat</b> <del>Indesignated</del>	Dedicated Acreage: <b>160156.19</b> Acres	

1. Outline the acreage dedicated to the subject well by colored pencil or hachure marks on the plat below.
2. If more than one lease is dedicated to the well, outline each and identify the ownership thereof (both as to working interest and royalty).
3. If more than one lease of different ownership is dedicated to the well, have the interests of all owners been consolidated by communitization, unitization, force-pooling, etc?

☐ Yes ☐ No If answer is "yes," type of consolidation \_\_\_\_\_

If answer is "no," list the owners and tract descriptions which have actually been consolidated. (Use reverse side of this form if necessary.) \_\_\_\_\_

No allowable will be assigned to the well until all interests have been consolidated (by communitization, unitization, forced-pooling, or otherwise) or until a non-standard unit, eliminating such interests, has been approved by the Commission.



CERTIFICATION

I hereby certify that the information contained herein is true and complete to the best of my knowledge and belief.

*Paul C. Ellison*

Name **Paul C. Ellison**  
Production Manager

Position

**Benson Mineral Group, Inc.**

Company

**June 2, 1978**

Date

I hereby certify that the well location shown on this plat was plotted from field notes of actual surveys made by me or under my supervision, and that the same is true and correct to the best of my knowledge and belief.

Date Surveyed

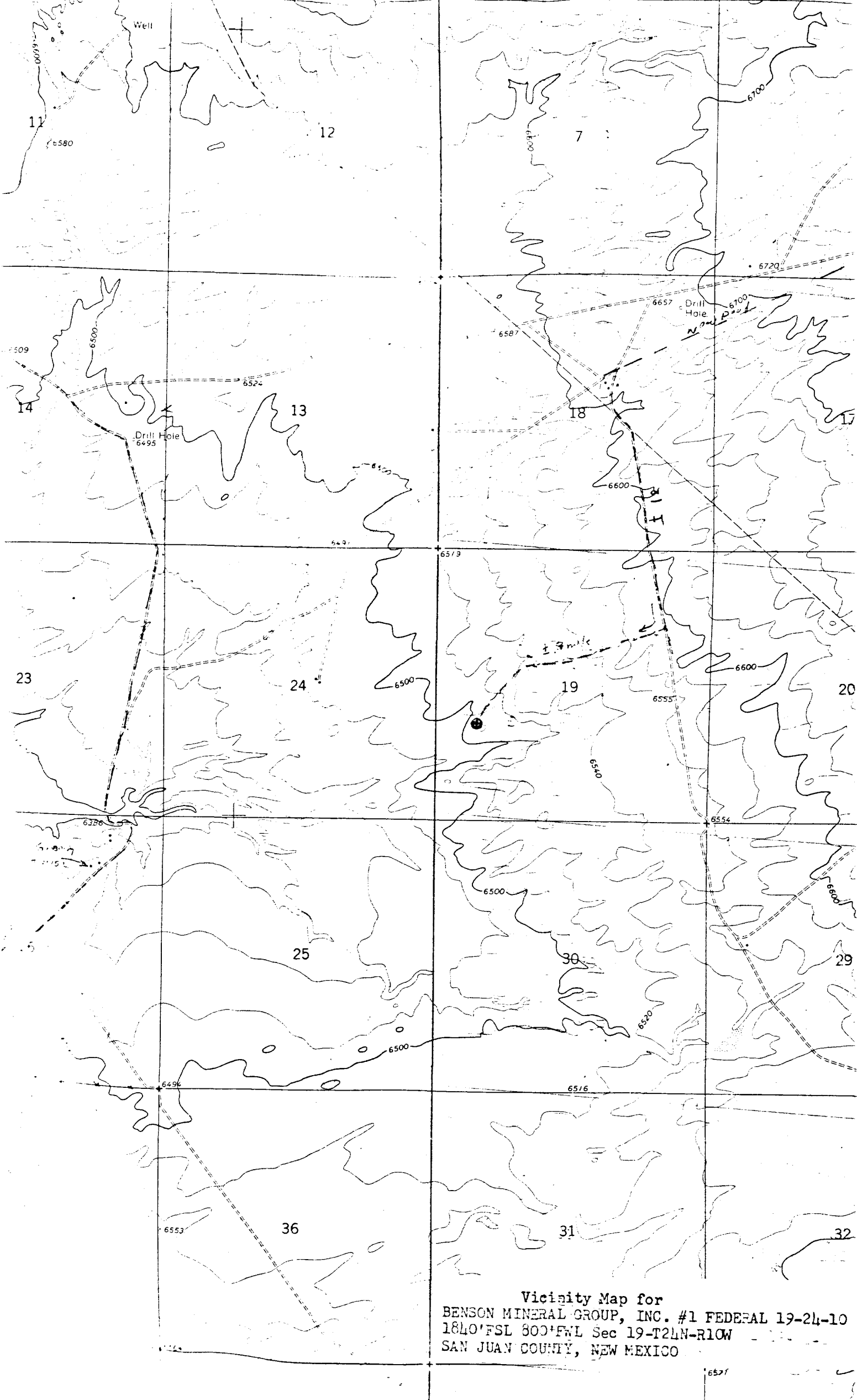
**May 16, 1978**

Registered Professional Engineer  
and/or Land Surveyor:

*Fred B. Kerr Jr.*  
**Fred B. Kerr Jr.**

Certificate No.

**3950**



Vicinity Map for  
BENSON MINERAL GROUP, INC. #1 FEDERAL 19-24-10  
1840' FSL 800' FWL Sec 19-T24N-R10W  
SAN JUAN COUNTY, NEW MEXICO

6527