

UNITED STATES
DEPARTMENT OF THE INTERIOR
GEOLOGICAL SURVEY

APPLICATION FOR PERMIT TO DRILL, DEEPEN, OR PLUG BACK

1a. TYPE OF WORK

DRILL ☒DEEPEN ☐PLUG BACK ☐

b. TYPE OF WELL

OIL
WELL ☐GAS
WELL ☒

OTHER

SINGLE
ZONE ☒MULTIPLE
ZONE ☐

2. NAME OF OPERATOR

Dugan Production Corp.

3. ADDRESS OF OPERATOR

P O Box 208, Farmington, NM 87401

4. LOCATION OF WELL (Report location clearly and in accordance with any State requirements.)

At surface

1650' FNL - 1520' FEL

At proposed prod. zone

14. DISTANCE IN MILES AND DIRECTION FROM NEAREST TOWN OR POST OFFICE*

6 miles SW of Blanco Trading Post, NM

15. DISTANCE FROM PROPOSED*

LOCATION TO NEAREST
PROPERTY OR LEASE LINE, FT.
(Also to nearest drlg. unit line, if any)

1120'

18. DISTANCE FROM PROPOSED LOCATION*
TO NEAREST WELL, DRILLING, COMPLETED,
OR APPLIED FOR, ON THIS LEASE, FT.

3000'

16. NO. OF ACRES IN LEASE

960

19. PROPOSED DEPTH

6320'

17. NO. OF ACRES ASSIGNED
TO THIS WELL

E/320

20. ROTARY OR CABLE TOOLS

Rotary

21. ELEVATIONS (Show whether DF, RT, GR, etc.)

6980' GL

22. APPROX. DATE WORK WILL START*

ASAP

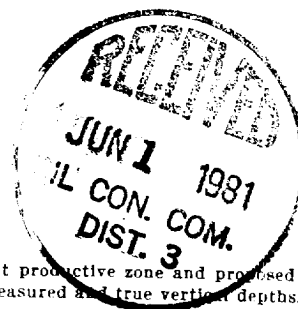
23.

DRILLING OPERATIONS AUTHORIZED ARE
SUBJECT TO COMPLIANCE WITH ATTACHED
GENERAL RESUME AND CEMENTING PROGRAMThis action is subject to administrative
appeal pursuant to 30 CFR 290.

SIZE OF HOLE	SIZE OF CASING	WEIGHT PER FOOT	SETTING DEPTH	
12-1/4"	8-5/8"	24#	225'	125 sx
7-7/8"	4-1/2"	10.5#	6230'	925 sx in 2 stages

Plan to drill w/ mud to test the Basin Dakota Formation. Plan to run IES log to TD. If productive, plan to set 4 1/2" casing, cement in two stages, selectively perforate, frac, clean out after frac, run 1 1/2" tubing and complete well.

GAS NOT DEDICATED



IN ABOVE SPACE DESCRIBE PROPOSED PROGRAM: If proposal is to deepen or plug back, give data on present productive zone and proposed new productive zone. If proposal is to drill or deepen directionally, give pertinent data on subsurface locations and measured and true vertical depths. Give blowout preventer program, if any.

24.

SIGNED

Jerome P. McHugh Jr.

TITLE

Landman

DATE

5-4-81

(This space for Federal or State office use)

PERMIT NO.

APPROVAL DATE

APPROVED BY

TITLE

DATE

CONDITIONS OF APPROVAL, IF ANY:

*See Instructions On Reverse Side

MAY 11 1981
Dean Elliott
For J. G. F. SIMS
DISTRICT ENGINEER

OIL CONSERVATION DIVISION

P. O. BOX 2088

SANTA FE, NEW MEXICO 87501

Form C-102
Revised 10-1-78

STATE OF NEW MEXICO

ENERGY AND MINERALS DEPARTMENT

All distances must be from the outer boundaries of the Section.

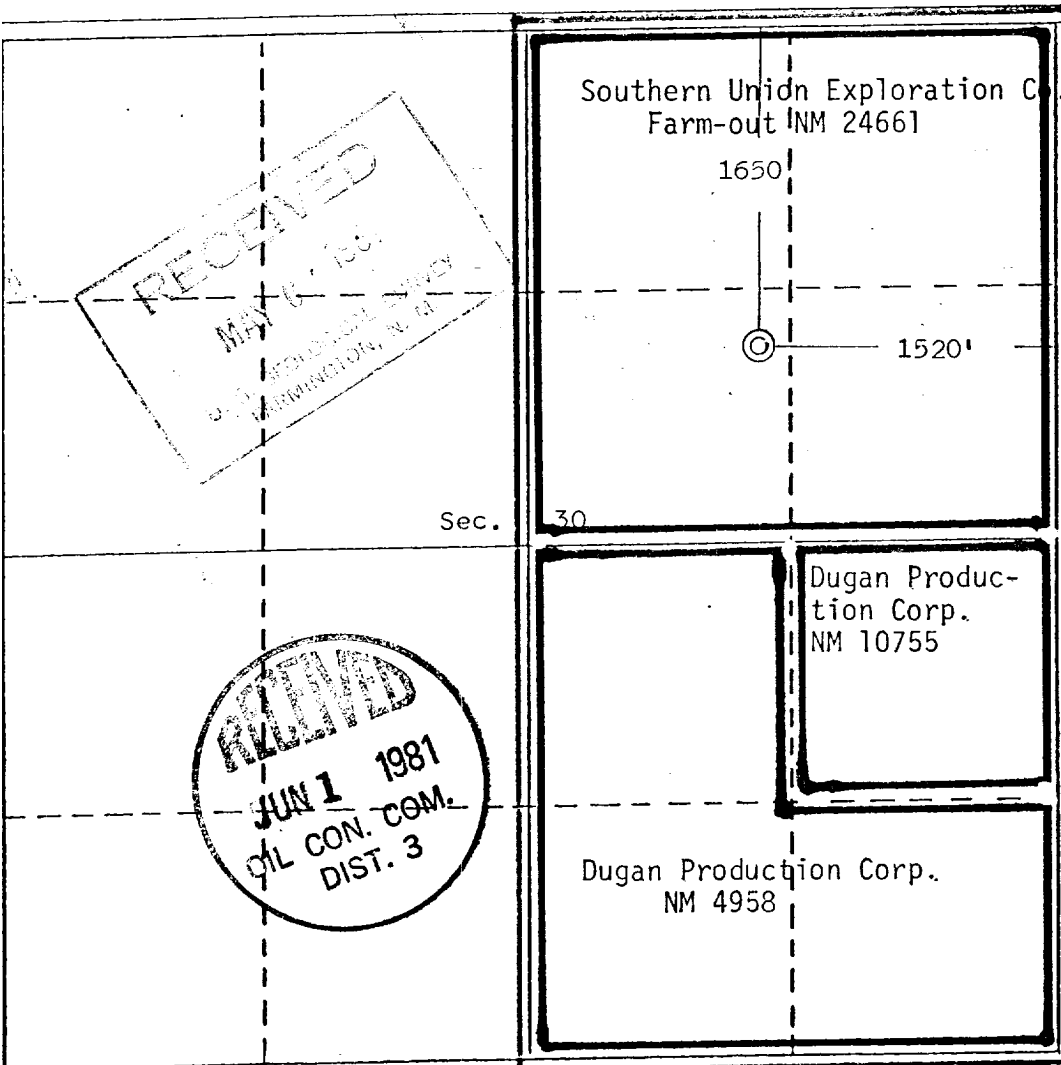
Operator Dugan Production Corporation		Lease July Jubilee		Well No. 1
Init Letter G	Section 30	Township 24 North	Range 9 West	County San Juan
Actual Footage Location of Well: 1650 feet from the North line and 1520 feet from the East line				
Ground Level Elev. 5980	Producing Formation Dakota	Pool Basin Dakota	Dedicated Acreage: 320 Acres	

1. Outline the acreage dedicated to the subject well by colored pencil or hachure marks on the plat below.
2. If more than one lease is dedicated to the well, outline each and identify the ownership thereof (both as to working interest and royalty).
3. If more than one lease of different ownership is dedicated to the well, have the interests of all owners been consolidated by communitization, unitization, force-pooling, etc?

☒ Yes ☐ No If answer is "yes," type of consolidation Communitization

If answer is "no," list the owners and tract descriptions which have actually been consolidated. (Use reverse side of this form if necessary.)

No allowable will be assigned to the well until all interests have been consolidated (by communitization, unitization, forced-pooling, or otherwise) or until a non-standard unit, eliminating such interests, has been approved by the Division.



CERTIFICATION

I hereby certify that the information contained herein is true and complete to the best of my knowledge and belief.

Jerome P. McHugh Jr.
Name

Jerome P. McHugh Jr.

Position

Landman

Company

Dugan Production Corp.

Date

5-4-81

I hereby certify that the well location shown on this plat was obtained from field notes of actual surveys made by me or under my supervision and that the same is true and correct to the best of my knowledge and belief.

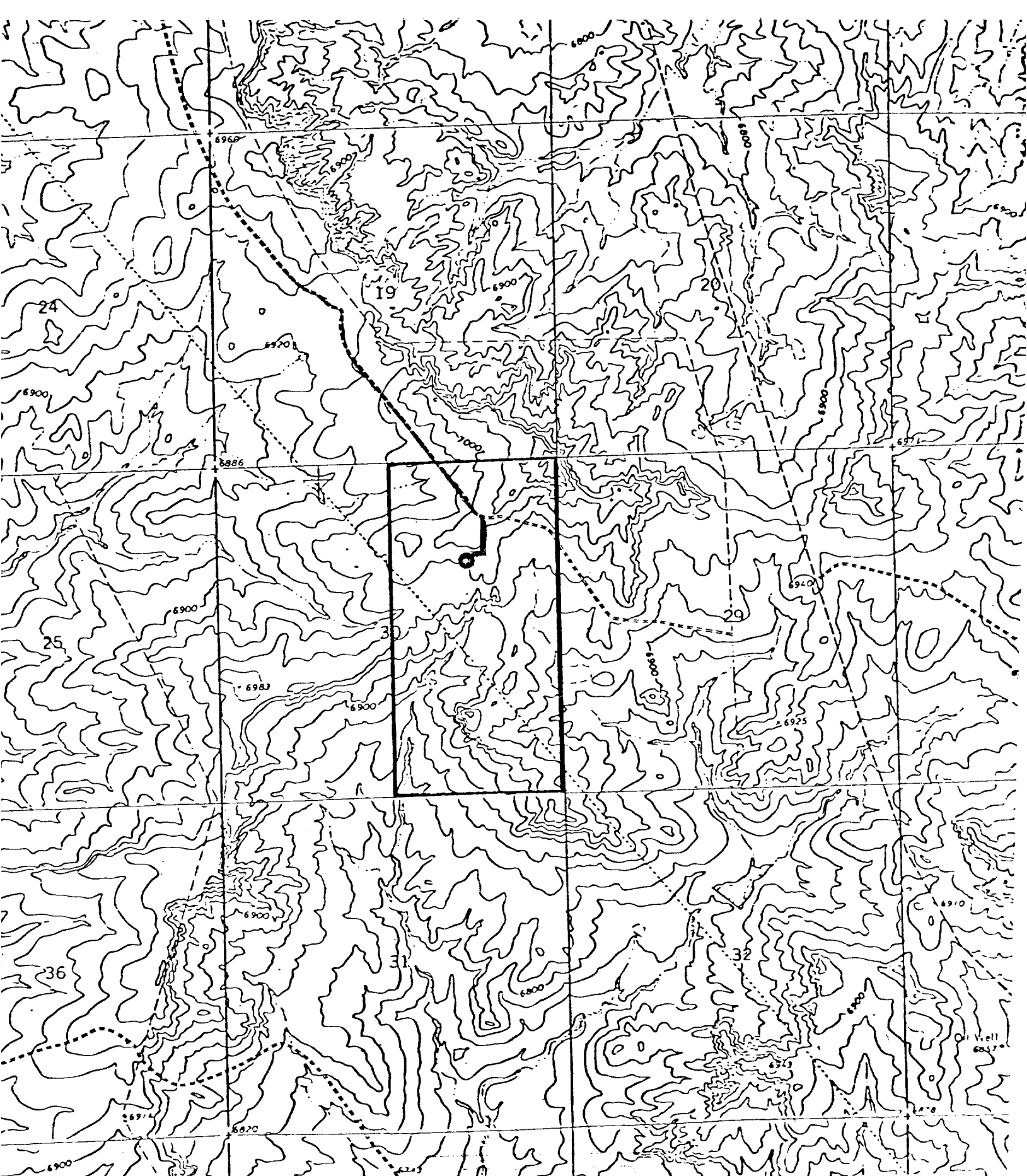
Date Surveyed

April 16, 1981

Registered Professional Engineer and/or Land Surveyor

Edgar L. Risenhoover
Certificate No. 5979

Edgar L. Risenhoover, L.S.



Existing Road
Access Road

DUGAN PRODUCTION CORP.
July Jubilee #1