

UNITED STATES
DEPARTMENT OF THE INTERIOR
GEOLOGICAL SURVEY

30-045-25922

APPLICATION FOR PERMIT TO DRILL, DEEPEN, OR PLUG BACK

1a. TYPE OF WORK

DRILL ☒

DEEPEN ☐

PLUG BACK ☐

b. TYPE OF WELL

OIL
WELL ☒

GAS
WELL ☒

OTHER

SINGLE
ZONE ☒

MULTIPLE
ZONE ☐

2. NAME OF OPERATOR

Robert L. Bayless

3. ADDRESS OF OPERATOR

P.O. Box 1541, Farmington, NM 87401

4. LOCATION OF WELL (Report location clearly and in accordance with any State requirements.)*

At surface

990' FNL & 1650' FWL

At proposed prod. zone

same

14. DISTANCE IN MILES AND DIRECTION FROM NEAREST TOWN OR POST OFFICE*

15. DISTANCE FROM PROPOSED*

LOCATION TO NEAREST
PROPERTY OR LEASE LINE, FT.
(Also to nearest drlg. unit line, if any)

18. DISTANCE FROM PROPOSED LOCATION*

TO NEAREST WELL, DRILLING, COMPLETED,
OR APPLIED FOR, ON THIS LEASE, FT.

16. NO. OF ACRES IN LEASE

360 320

19. PROPOSED DEPTH

5575 ft.

17. NO. OF ACRES ASSIGNED
TO THIS WELL

320 80

20. ROTARY OR CABLE TOOLS

Rotary

21. ELEVATIONS (Show whether DF, RT, GR, etc.)

6926 ft. GL

22. APPROX. DATE WORK WILL START*

23.

PROPOSED CASING AND CEMENTING PROGRAM

SIZE OF HOLE	SIZE OF CASING	WEIGHT PER FOOT	SETTING DEPTH	QUANTITY OF CEMENT
12-1/4"	8-5/8"	20#/ft.	200 ft.	125 sacks, circulated to surface
7-7/8"	4-1/2"	10.5#/ft.	5575 ft.	875 sacks

Will drill 12-1/4" hole to 200 ft. and set 200 ft. of 8-5/8", 20#/ft., J-55 used casing with 125 sacks Class "B" cement, circulated to surface. Will drill 7-7/8" hole to 5575 ft. and run open hole logs. If well appears productive, will run 5575 ft. of 4-1/2", 10.5#/ft., J-55 new casing with cementing stage collar at 4500 ft. Will cement long string as follows: 1st stage: 225 sacks Class "B" 50/50 pozmix with 2% gel; 2nd State: 650 sacks Class "B" with 2% D-79 extender, circulated to the surface. Will perforate and stimulate as required. No abnormal pressures or temperatures are expected. Circulation medium will be clear water, natural mud and water loss additives. Blowout preventer schematic is attached. The gas from this formation is dedicated.

ESTIMATED TOPS

Base of Ojo Alamo - 1049 ft. Gallup - 5264 ft.
Fruitland - 1546 Marye - 5426 ft.
Pic. Cliffs - 1773
Chacra - 2173
Point Lookout - 4208

IN ABOVE SPACE DESCRIBE PROPOSED PROGRAM: If proposal is to deepen or plug back, give data on present productive zone and proposed new productive zone. If proposal is to drill or deepen directionally, give pertinent data on subsurface locations and measured and true vertical depths. Give blowout preventer program, if any

24.

SIGNED

TITLE

Operator

DATE

June 21, 1982

(This space for Federal or State office use)

PERMIT NO.

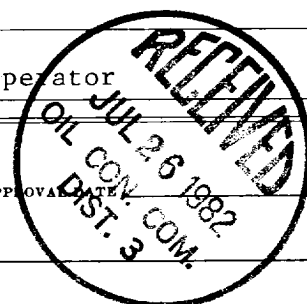
APPROVAL

APPROVED BY

TITLE

DATE

CONDITIONS OF APPROVAL, IF ANY:



JUL 22 1982
F. L. BAYLESS
Operator

All distances must be from the outer boundaries of the Section.

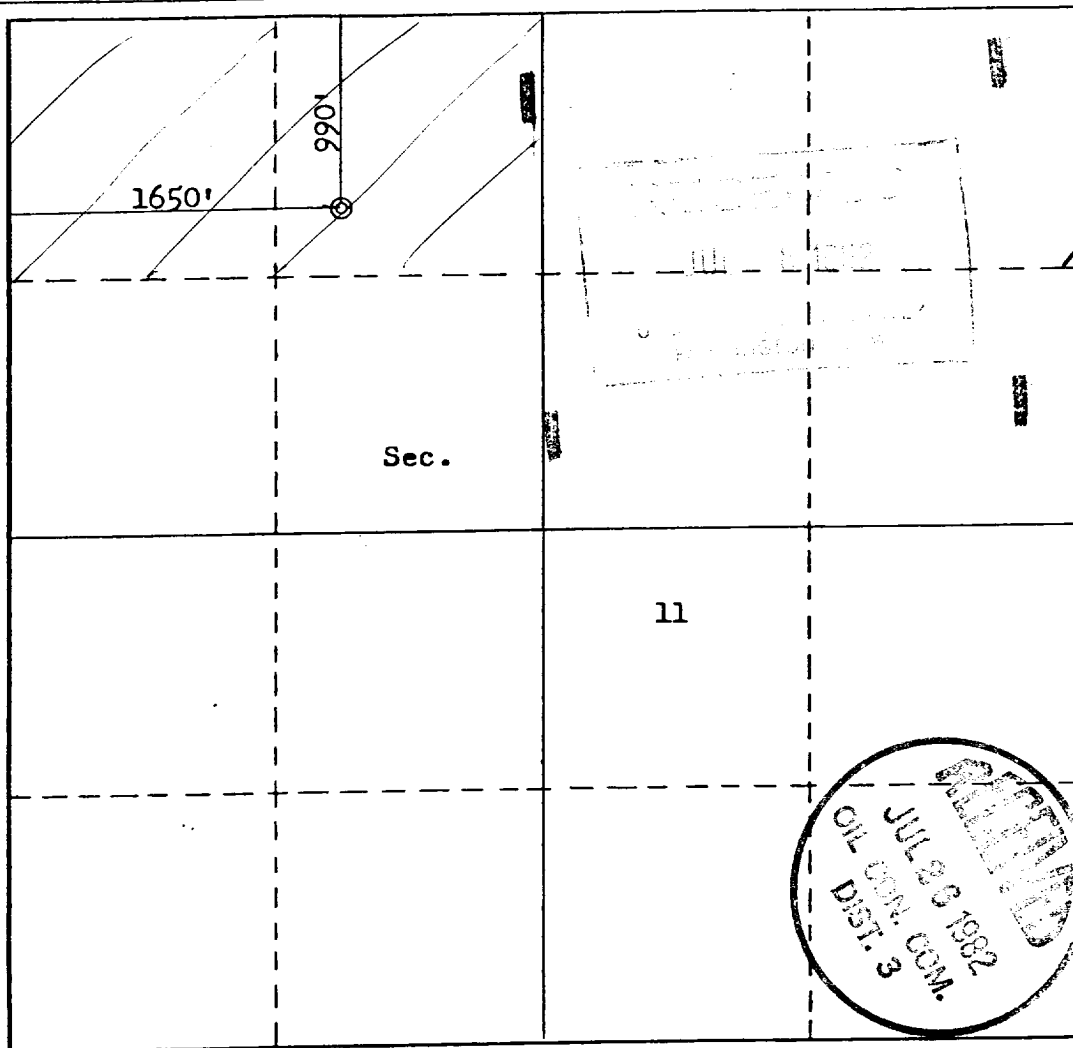
Operator R. L. BAYLESS		Lease THOMPSON "G"		Well No. 1
Unit Letter C	Section 11	Township 24N	Range 10W	County San Juan
Actual Footage Location of Well: 990 feet from the North line and 1650 feet from the West line				
Ground Level Elev. 6926	Producing Formation Gallup	Pool Bisti Lower Gallup Ext.	Dedicated Acreage: 320 80 Acres	

1. Outline the acreage dedicated to the subject well by colored pencil or hachure marks on the plat below.
2. If more than one lease is dedicated to the well, outline each and identify the ownership thereof (both as to working interest and royalty).
3. If more than one lease of different ownership is dedicated to the well, have the interests of all owners been consolidated by communitization, unitization, force-pooling, etc?

☐ Yes ☐ No If answer is "yes," type of consolidation _____

If answer is "no," list the owners and tract descriptions which have actually been consolidated. (Use reverse side of this form if necessary.) _____

No allowable will be assigned to the well until all interests have been consolidated (by communitization, unitization, forced-pooling, or otherwise) or until a non-standard unit, eliminating such interests, has been approved by the Commission.



CERTIFICATION

I hereby certify that the information contained herein is true and complete to the best of my knowledge and belief.

Name

Robert L. Bayless

Position

Operator

Company

Robert L. Bayless

Date

July 08, 1982

I hereby certify that the well location shown on this plat was plotted from field notes of actual surveys made by me or under my supervision, and that the same is true and correct to the best of my knowledge and belief.

Date Surveyed

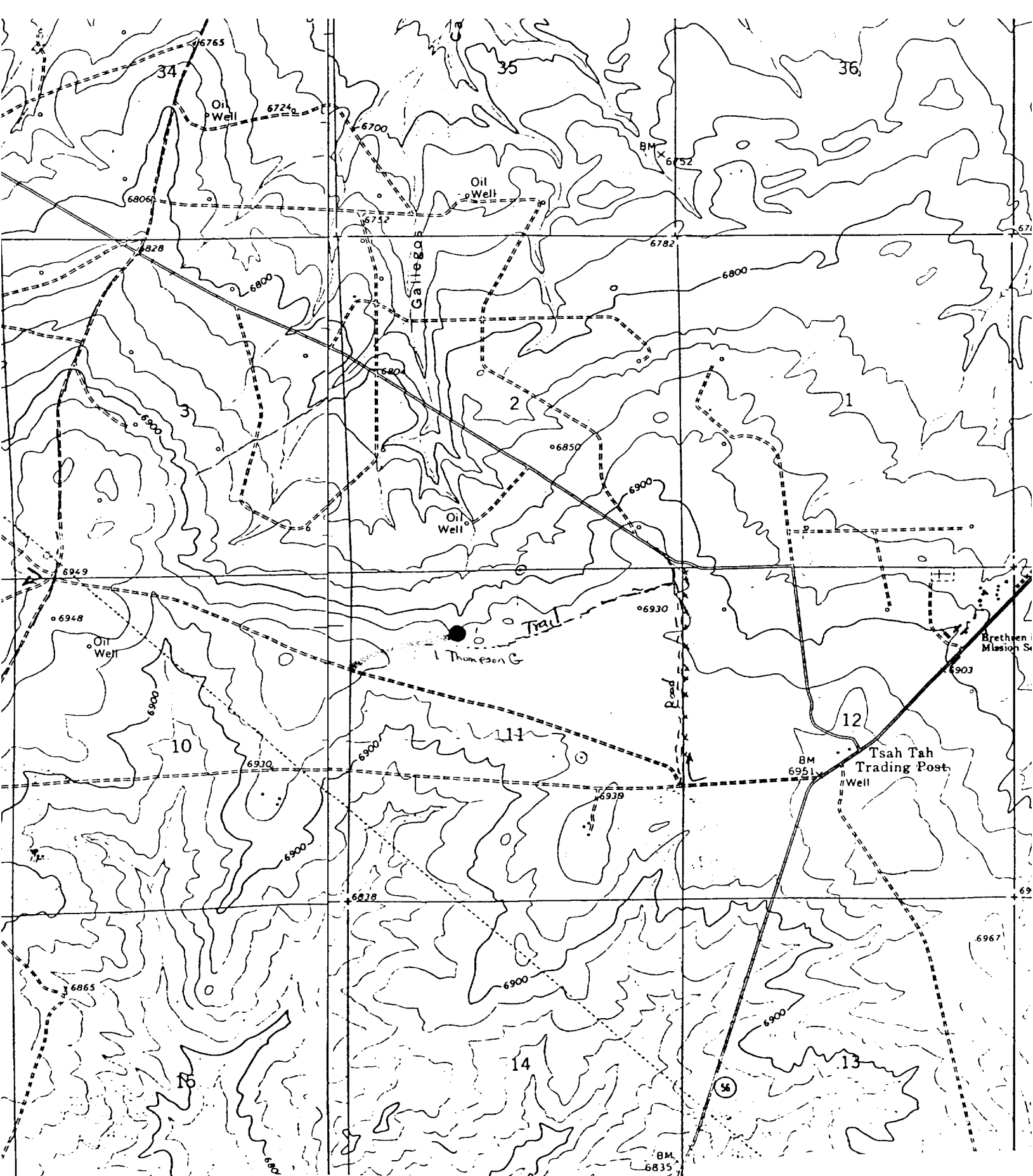
June 8, 1982

Registered Professional Engineer
and/or Land Surveyor

Fred B. Kerr Jr.

Certificate No.

3950



Vicinity Map for
 R. L. BAYLESS #1 THOMPSON "G"
 990'FNL 1650'FWL Sec. 11-T2LN-R1OW
 SAN JUAN COUNTY, NEW MEXICO

Existing Access:

Proposed Access: