

UNITED STATES
DEPARTMENT OF THE INTERIOR
GEOLOGICAL SURVEY

APPLICATION FOR PERMIT TO DRILL, DEEPEN, OR PLUG BACK

1A. TYPE OF WORK

DRILL ☒DEEPEN ☐PLUG BACK ☐

B. TYPE OF WELL

OIL
WELL ☒GAS
WELL ☐

OTHER

SINGLE
ZONE ☒MULTIPLE
ZONE ☐

2. NAME OF OPERATOR

DUGAN PRODUCTION CORP.

3. ADDRESS OF OPERATOR

P.O. Box 208, Farmington, NM 87499

4. LOCATION OF WELL (Report location clearly and in accordance with any State requirements.)*

At surface

660' FSL & 1980' FEL

At proposed prod. zone

14. DISTANCE IN MILES AND DIRECTION FROM NEAREST TOWN OR POST OFFICE*

approx. 9½ miles SW of Blanco Trading Post, NM

15. DISTANCE FROM PROPOSED*
LOCATION TO NEAREST
PROPERTY OR LEASE LINE, FT.

660'

(Also to nearest drlg. unit line, if any)

18. DISTANCE FROM PROPOSED LOCATION*
TO NEAREST WELL, DRILLING, COMPLETED,
OR APPLIED FOR, ON THIS LEASE, FT.

approx. 1867'

from Gold Medal #3

16. NO. OF ACRES IN LEASE

1594.4

19. PROPOSED DEPTH

4730'

17. NO. OF ACRES ASSIGNED
TO THIS WELL

180

20. ROTARY OR CABLE TOOLS

Rotary

21. ELEVATIONS (Show whether DF, RT, GR, etc.)

6570' GL; 6582' RKB

22. APPROX. DATE WORK WILL START*

ASAP

23.

PROPOSED CASING AND CEMENTING PROGRAM

DRILLING OPERATIONS AUTHORIZED ARE
SUBJECT TO COMPLIANCE WITH ATTACHED
"GENERAL REQUIREMENTS"

SIZE OF HOLE	SIZE OF CASING	WEIGHT PER FOOT	SETTING DEPTH	
12-1/4"	8-5/8"	24#	200'	159 cf circ. to surface
7-7/8"	4-1/2"	10.5#	4730'	1497 cf circ. to surface

Plan to drill a 12-1/4" hole and set 200' of 8-5/8" OD, 24#, J-55 surface casing; then plan to drill a 7-7/8" hole to total depth with gel-water-mud program to test Gallup formation. Plan to run IES and CDL logs. If determined productive, will run 4-1/2", 10.5#, J-55 casing, selectively perforate, frac, clean out after frac and complete well.

IN ABOVE SPACE DESCRIBE PROPOSED PROGRAM: If proposal is to deepen or plug back, give data on present productive zone and proposed new productive zone. If proposal is to drill or deepen directionally, give pertinent data on subsurface locations and measured and true vertical depths. Give blowout preventer program, if any.

24.

SIGNED Sherman E. DuganTITLE GeologistDATE 9-29-87

(This space for Federal or State office use)

PERMIT NO. _____

APPROVAL DATE _____

APPROVED BY _____

TITLE _____

DATE _____

CONDITIONS OF APPROVAL, IF ANY:

MUSOG

*See Instructions On Reverse Side

FOR

/s/ Arlan S. Hiner

All distances must be from the outer boundaries of the Section.

No allowable will be assigned to the well until all interests have been consolidated (by communitization, unitization, forced-pooling, or otherwise) or until a non-standard unit, eliminating such interests, has been approved by the Division.


RECEIVED
BLM/NAIL ROOM
07 SEP 80 PM 2:00

FERTILIZATION RESOURCE AREA
FARMINGTON, NEW MEXICO

SECTION 31

RECEIVED
OCT 07 1987
OIL CON. DIV.
DIST. 3

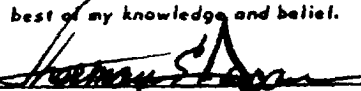
Dugan Prod.
NM 22044



660'
1980'

CERTIFICATION

I hereby certify that the information contained herein is true and complete to the best of my knowledge and belief.

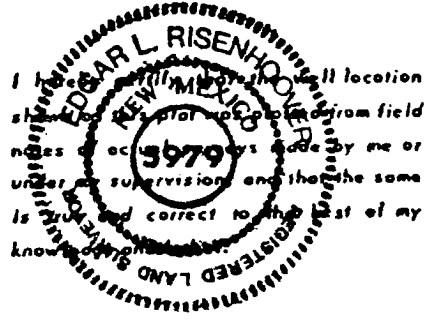


Name
Sherman E. Dugan

Position
Dugan Production Corp.

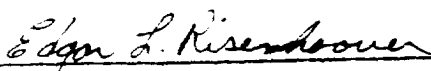
Company
Geologist

Date
9-29-87



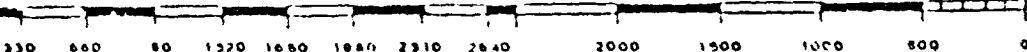
Date Surveyed
September 15, 1987

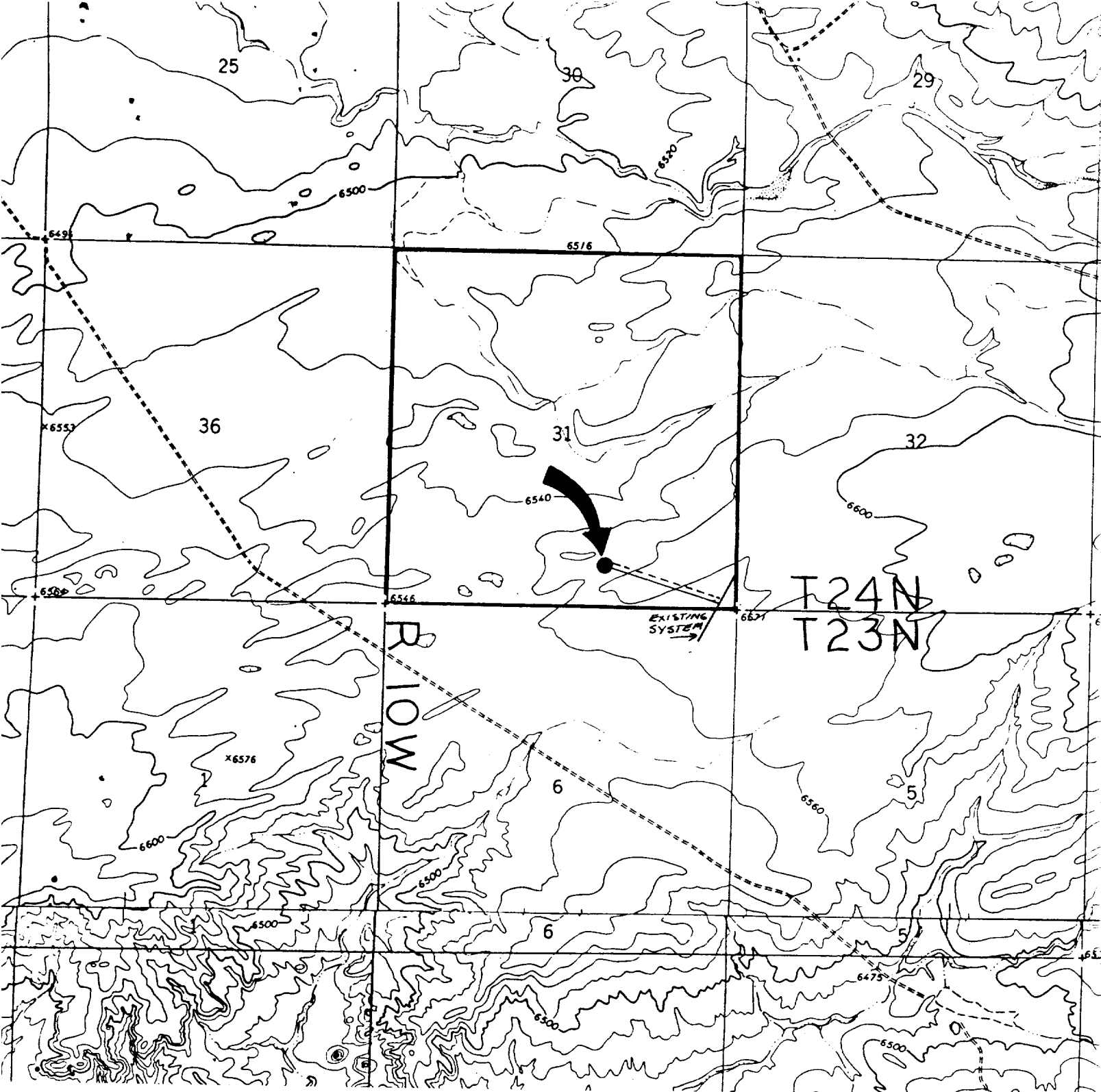
Registered Professional Engineer
and/or Land Surveyor



Certificate No. 5979

Edgar L. Risenhoover, L.S.





DUGAN PRODUCTION CORP. - Gold Medal #5
Existing Roads Exhibit E

Vicinity of nearest town or reference pt.
9 1/2 miles SW of Blanco Trading Post, NM

Type of surface dirt

Conditions good

Other

Reference map: USGS maps: Huerfano Trading
Post SW, 1966 (7.5 min series) and Pueblo

Bonito NW 1966 (7.5 min series)

DUGAN PRODUCTION CORP. - Gold Medal #5
Planned Access Road(s) Exhibit E

Width 20' Maximum grades 1%

Drainage design as required

Cuts & Fills See Cut & Fill Diagram

Surfacing material none

Turnouts

Culverts

Gates

Cattleguards

Fence cuts

Access road(s) do not cross Fed Ind land.