

Submit to Appropriate
District Office
State Lease -- 6 copies
Fee Lease -- 5 copies

State of New Mexico
Energy, Minerals and Natural Resources Department

Form C-101
Revised 1-1-89

DISTRICT I
P.O. Box 1980, Hobbs, NM 88240

DISTRICT II
P.O. Drawer DD, Artesia, NM 88210

DISTRICT III
1000 Rio Brazos Rd., Aztec, NM 87410

OIL CONSERVATION DIVISION

P.O. Box 2088
Santa Fe, New Mexico 87504-2088

API NO. (assigned by OCD on New Wells)

30-045-27638

5. Indicate Type of Lease

STATE ☒

FEE ☐

6. State Oil & Gas Lease No.

APPLICATION FOR PERMIT TO DRILL, DEEPEN, OR PLUG BACK

1a. Type of Work:

DRILL ☒

RE-ENTER ☐

DEEPEN ☐

PLUG BACK ☐

b. Type of Well:

OIL
WELL ☒

GAS
WELL ☐

OTHER ☐

SINGLE
ZONE ☒

MULTIPLE
ZONE ☐

7. Lease Name or Unit Agreement Name

BART

2. Name of Operator

Bannon Energy, Inc. c/o Holcomb Oil & Gas, Inc.

8. Well No.

1

3. Address of Operator

P.O. Box 2058, Farmington, NM 87499

9. Pool name or Wildcat

LYBROOK - Gallup - EXT

4. Well Location

Unit Letter P : 455 Feet From The South Line and 545 Feet From The East Line

Section 16

Township 24N

Range 8W

NMPM San Juan

County

10. Proposed Depth

5800'

11. Formation

Gallup

12. Rotary or C.T.

Rotary

13. Elevations (Show whether DF, RT, GR, etc.)

6883' GR

14. Kind & Status Plug. Bond

15. Drilling Contractor

16. Approx. Date Work will start

4-15-90

17.

PROPOSED CASING AND CEMENT PROGRAM

SIZE OF HOLE	SIZE OF CASING	WEIGHT PER FOOT	SETTING DEPTH	SACKS OF CEMENT	EST. TOP
12 1/2"	8 5/8"	24.0 lb. J-55	300'	Cement to surface	
7 7/8"	4 1/2"	11.6 lb. K-55	5800'	800 sx-volume to be	
				calculated subsequent to	
				logging & circulated to surface.	

Well to be drilled to penetrate the Gallup Formation. All producing intervals in the Gallup will be stimulated as necessary.

EXHIBITS:

"A" Topo map

"B" Blowout Preventor Diagram

APPROVAL EXPIRES 9-12-90
UNLESS DRILLING IS COMMENCED.
SPUD NOTICE MUST BE SUBMITTED
WITHIN 10 DAYS.

RECEIVED

MAR 09 1990

OIL CON. DIV. I
DIST. 3

IN ABOVE SPACE DESCRIBE PROPOSED PROGRAM: IF PROPOSAL IS TO DEEPEN OR PLUG BACK, GIVE DATA ON PRESENT PRODUCTIVE ZONE AND PROPOSED NEW PRODUCTIVE ZONE. GIVE BLOWOUT PREVENTER PROGRAM, IF ANY.

I hereby certify that the information above is true and complete to the best of my knowledge and belief.

SIGNATURE

W. J. Holcomb

TITLE Agent, Bannon Energy, Inc. DATE 3-9-90

TYPE OR PRINT NAME

W. J. Holcomb

TELEPHONE NO. 505-326-0550

(This space for State Use)

APPROVED BY

Emilia Busch

DEPUTY OIL & GAS INSPECTOR, DIST. 3

DATE

MAR 12 1990

CONDITIONS OF APPROVAL, IF ANY:

RECEIVED
MAR 1 1960

OFF. COMM. DIV.
FBI

RECEIVED
MAR 1 1960
FBI

MAR 1 5 1960

U.S. DEPARTMENT OF JUSTICE

Submit to Appropriate
District Office
State Lease - 4 copies
Fee Lease - 3 copies

State of New Mexico
Energy, Minerals and Natural Resources Department

Form C-102
Revised 1-1-89

OIL CONSERVATION DIVISION

DISTRICT I
P.O. Box 1980, Hobbs, NM 88240

P.O. Box 2088
Santa Fe, New Mexico 87504-2088

DISTRICT II
P.O. Drawer DD, Artesia, NM 88210

DISTRICT III
1000 Rio Brazos Rd., Aztec, NM 87410

WELL LOCATION AND ACREAGE DEDICATION PLAT

All Distances must be from the outer boundaries of the section

Operator BANNON ENERGY, INC.			Lease EART		Well No. 1
Unit Letter P	Section 16	Township T.24 N.	Range R.8 W.	County SAN JUAN COUNTY	
Actual Footage Location of Well: 455 feet from the SOUTH line and 545 feet from the EAST line					
Ground level Elev. 6883	Producing Formation Gallup		Pool Lybrook Gallup - EXT		Dedicated Acreage: 40 Acres

1. Outline the acreage dedicated to the subject well by colored pencil or hatchure marks on the plat below.
2. If more than one lease is dedicated to the well, outline each and identify the ownership thereof (both as to working interest and royalty).
3. If more than one lease of different ownership is dedicated to the well, have the interest of all owners been consolidated by communitization, unitization, force-pooling, etc.?
☐ Yes ☐ No If answer is "yes" type of consolidation _____
If answer is "no" list the owners and tract descriptions which have actually been consolidated. (Use reverse side of this form if necessary). _____
No allowable will be assigned to the well until all interests have been consolidated (by communitization, unitization, forced-pooling, or otherwise) or until a non-standard unit, eliminating such interest, has been approved by the Division.

OPERATOR CERTIFICATION

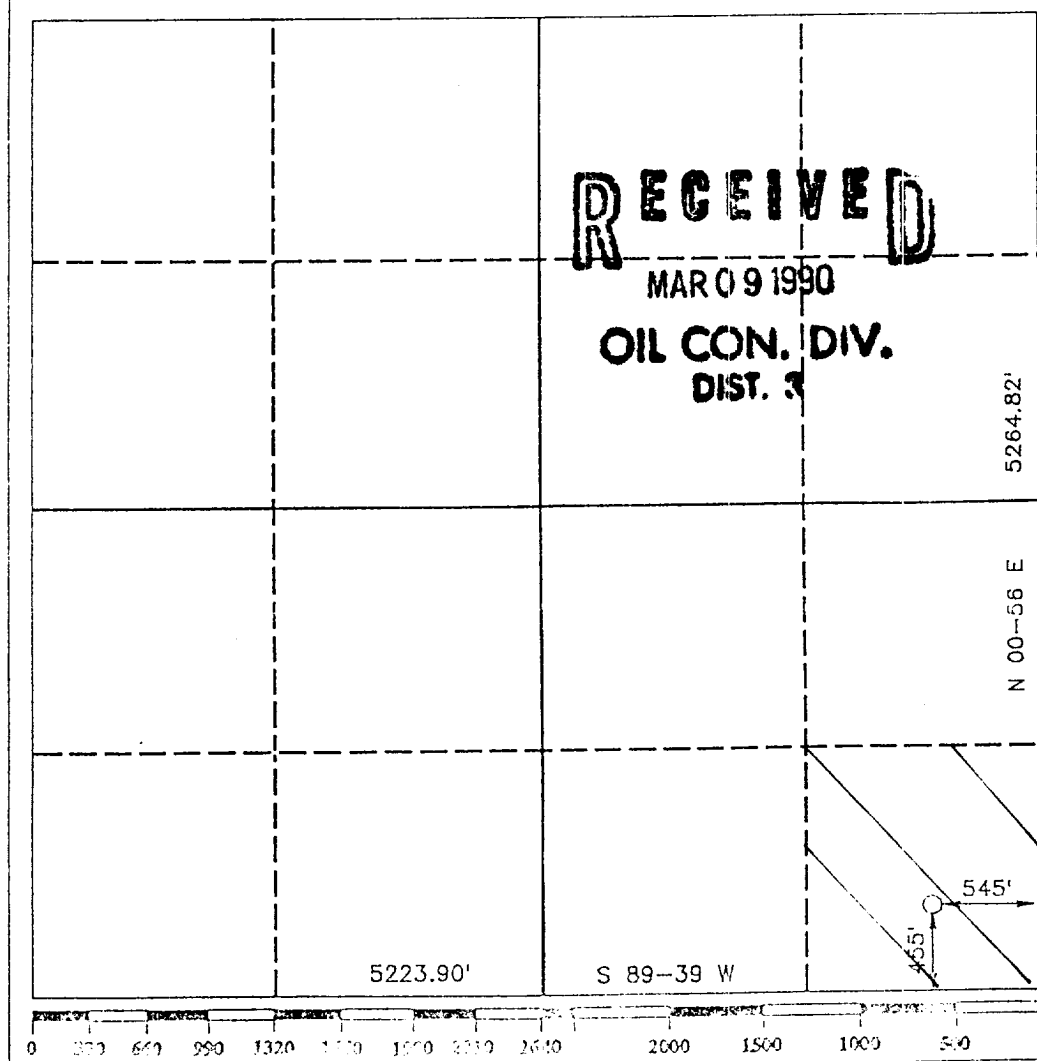
I hereby certify that the information contained herein is true and complete to the best of my knowledge and belief.

Signature *W. J. Holcomb*
Printed Name **W. J. Holcomb**
Position **Agent**
Company **Bannon Energy, Inc.**
Date **3-9-90**

SURVEYOR CERTIFICATION

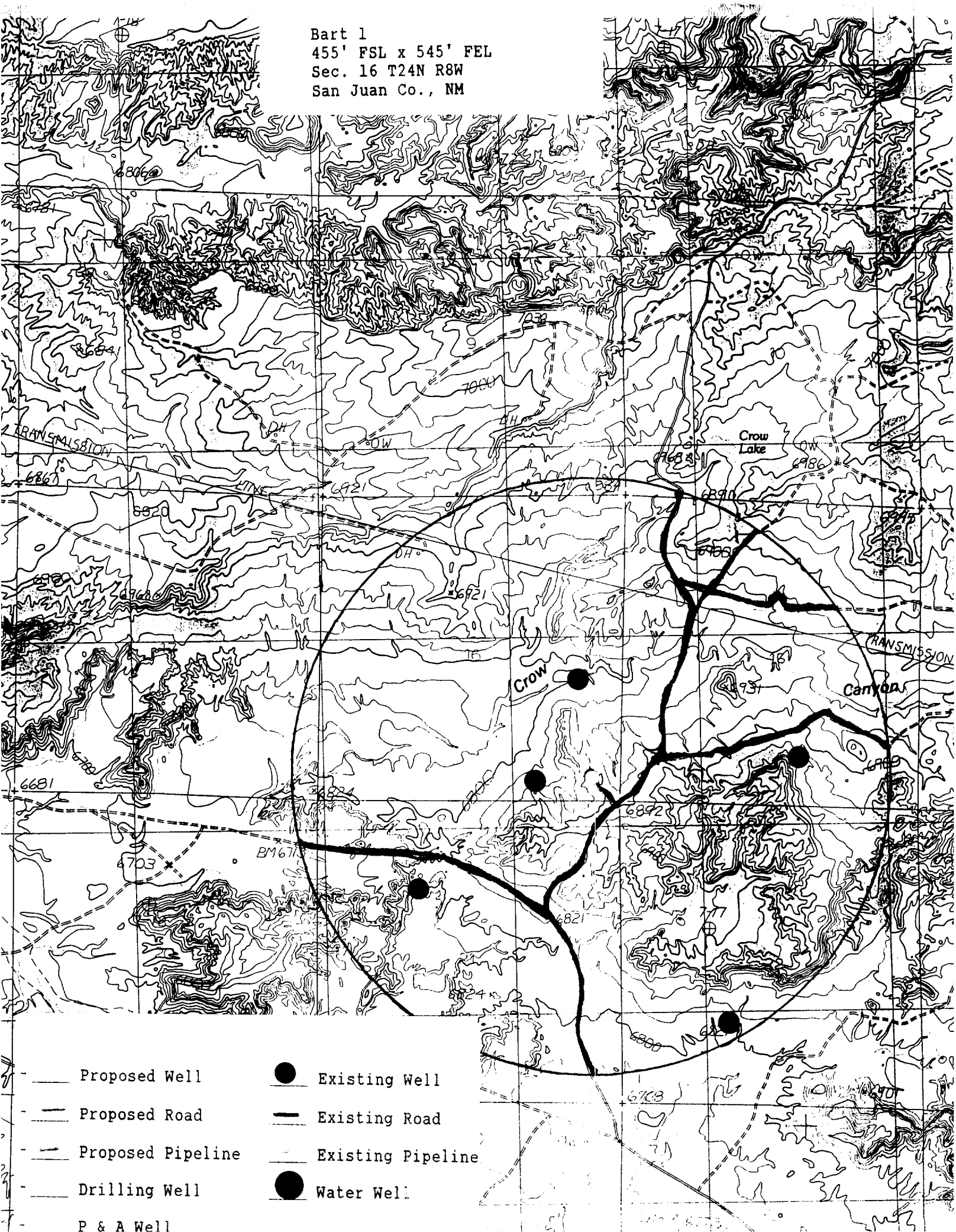
I hereby certify that the well location shown on this plat was plotted from field notes of actual surveys made by me or under my supervision, and that the same is true and correct to the best of my knowledge and belief.

Date Surveyed **FEBRUARY 27, 1990**
Signature & Seal of Professional Surveyor
R. HOWARD DAGGETT
9878
Certificate No. **9879**
Registered Professional Land Surveyor



RECEIVED
JAN 10 1964
OFFICE OF THE
DIRECTOR
U.S. AIR FORCE
WASHINGTON, D.C.

Bart 1
 455' FSL x 545' FEL
 Sec. 16 T24N R8W
 San Juan Co., NM



Proposed Well

Proposed Road

Proposed Pipeline

Drilling Well

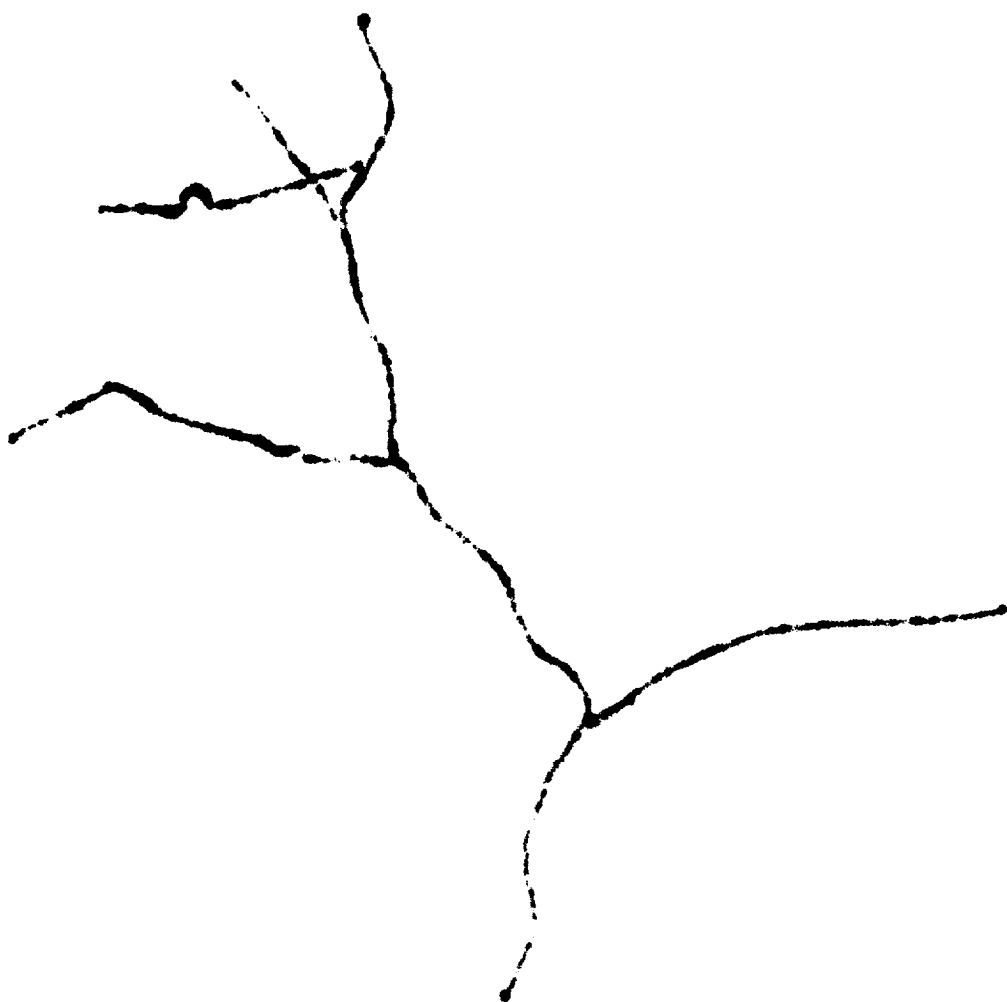
P & A Well

Existing Well

Existing Road

Existing Pipeline

Water Well

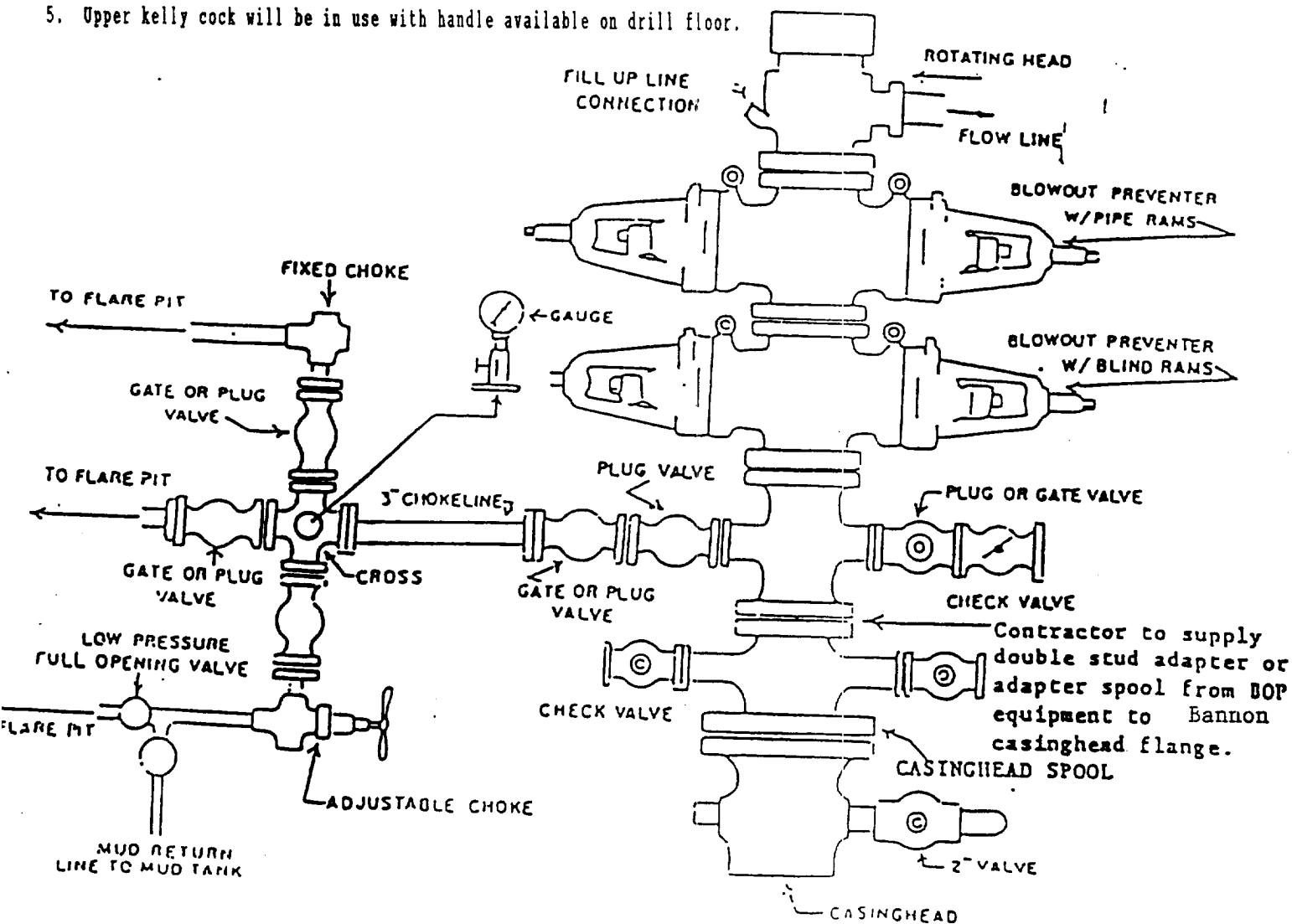


Bart 1
 455' FSL x 545' FEL
 Sec. 16 T24N R8W
 San Juan Co., NM

FARMINGTON DISTRICT BLOWOUT PREVENTER REQUIREMENTS

EXHIBIT "B"

1. Blowout Preventers and Master Valve to be fluid operated, and all fittings must be in good condition. Handwheels must be installed prior to drilling out.
2. Equipment through which bit must pass shall be as large as the inside diameter of the casing that is being drilled through.
3. All fittings to be flanged, (except for flare line).
4. Full opening safety valve and inside BOP valve must be available on rig floor at all times with proper connection or sub for drill pipe and drill collars.
5. Upper kelly cock will be in use with handle available on drill floor.



BLOWOUT PREVENTER HOOKUP

API Series # 2000

Operation of BOP by closing both pipe and blind rams will be tested each trip or, on long bit runs, pipe rams will be closed once each 24 hours.