

UNITED STATES  
DEPARTMENT OF THE INTERIOR

## GEOLOGICAL SURVEY

## APPLICATION FOR PERMIT TO DRILL, DEEPEN, OR PLUG BACK

## 1a. TYPE OF WORK

DRILL ☒DEEPEN ☐ PLUG BACK ☐

## b. TYPE OF WELL

OIL  
WELL ☒GAS  
WELL ☐OTHER ☐SINGLE  
ZONE ☒MULTIPLE  
ZONE ☐

## 2. NAME OF OPERATOR

DUGAN PRODUCTION CORP.

## 3. ADDRESS OF OPERATOR

P.O. Box 420, Farmington, NM 87499

## 4. LOCATION OF WELL (Report location clearly and in accordance with any State requirements.)\*

At surface

1980' FNL & 1980' FEL  
At proposed prod. zone

## 14. DISTANCE IN MILES AND DIRECTION FROM NEAREST TOWN OR POST OFFICE\*

approx. 6-1/2 miles SW of Blanco Trading Post, NM

## 15. DISTANCE FROM PROPOSED\*

LOCATION TO NEAREST  
PROPERTY OR LEASE LINE, FT.  
(Also to nearest drlg. unit line, if any)

1980'

## 16. NO. OF ACRES IN LEASE

120

## 18. DISTANCE FROM PROPOSED LOCATION\*

TO NEAREST WELL, DRILLING, COMPLETED,  
OR APPLIED FOR, ON THIS LEASE, FT.

## 19. PROPOSED DEPTH

5080'

21. ELEVATIONS (Show whether DF, RT, GR, etc.) \*  
6745' GLand appeal pursuant to 43 CFR 3165.3  
and appeal pursuant to 43 CFR 3165.4.

## 23. PROPOSED CASING AND CEMENTING PROGRAM

SIZE OF HOLE	SIZE OF CASING	WEIGHT PER FOOT	SETTING DEPTH	QUANTITY OF CEMENT
12-1/4"	8-5/8"	24#	200'	159 c.f. circ. to surface
7-7/8"	4-1/2"	10.5#	5080'	1620 c.f. circ. to surface

Plan to drill a 12-1/4" hole and set 200' of 8-5/8" OD, 24#, J-55 surface casing; then plan to drill a 7-7/8" hole to total depth with gel-water-mud program to test the Gallup formation. Plan to run IES and CDL logs. If determined productive, will run 4-1/2", 10.5#, J-55 casing with stage tool, selectively perforate, frac, clean out after frac and complete well.

RECEIVED  
SEP 12 1991  
OIL CON. DIV.,  
DIST. 3

IN ABOVE SPACE DESCRIBE PROPOSED PROGRAM: If proposal is to deepen or plug back, give data on present productive zone and proposed new productive zone. If proposal is to drill or deepen directionally, give pertinent data on subsurface locations and measured and true vertical depths. Give blowout preventer program, if any.

24.

SIGNED

TITLE Vice-President

DATE 8-22-91

(This space for Federal or State office use)

APPROVED  
AS AMENDED

PERMIT NO.

APPROVAL DATE

APPROVED BY

TITLE

CONDITIONS OF APPROVAL, IF ANY:

SEP 11 1991  
AREA MANAGER

\*See Instructions On Reverse Side

# OIL CONSERVATION DIVISION

P.O. Box 2088  
Santa Fe, New Mexico 87504-2088

DISTRICT I  
P.O. Box 1980, Hobbs, NM 88240

DISTRICT II  
P.O. Drawer DD, Artesia, NM 88210

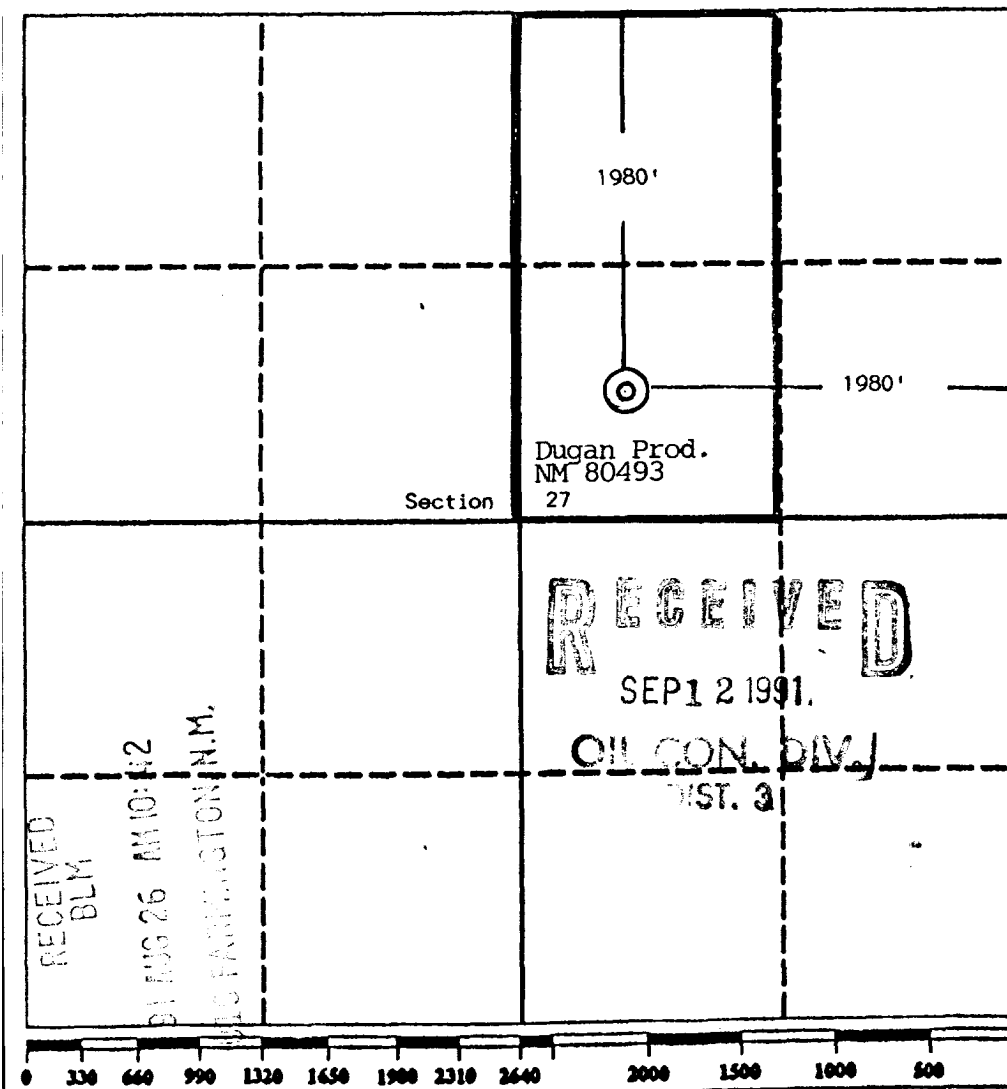
DISTRICT III  
1000 Rio Brazos Rd., Aztec, NM 87410

## WELL LOCATION AND ACREAGE DEDICATION PLAT

All Distances must be from the outer boundaries of the section

Operator Dugan Production Corporation			Lease Mt. Baldy		Well No. 1
Unit Letter G	Section 27	Township 24 North	Range 10 West	County San Juan	
Actual Footage Location of Well: 1980 feet from the North line and 1980 feet from the East line					
Ground level Elev. 6745	Producing Formation Gallup	Pool South Bisti Gallup Ext.		Dedicated Acreage: 80 Acres	

- Outline the acreage dedicated to the subject well by colored pencil or hatchure marks on the plat below.
- If more than one lease is dedicated to the well, outline each and identify the ownership thereof (both as to working interest and royalty).
- If more than one lease of different ownership is dedicated to the well, have the interest of all owners been consolidated by communitization, unitization, force-pooling, etc?  
☐ Yes ☐ No If answer is "yes" type of consolidation \_\_\_\_\_  
If answer is "no" list the owners and tract descriptions which have actually been consolidated. (Use reverse side of this form if necessary.)  
No allowable will be assigned to the well until all interests have been consolidated (by communitization, unitization, forced-pooling, or otherwise) or until a non-standard unit, eliminating such interest, has been approved by the Division.



### OPERATOR CERTIFICATION

I hereby certify that the information contained herein is true and complete to the best of my knowledge and belief.

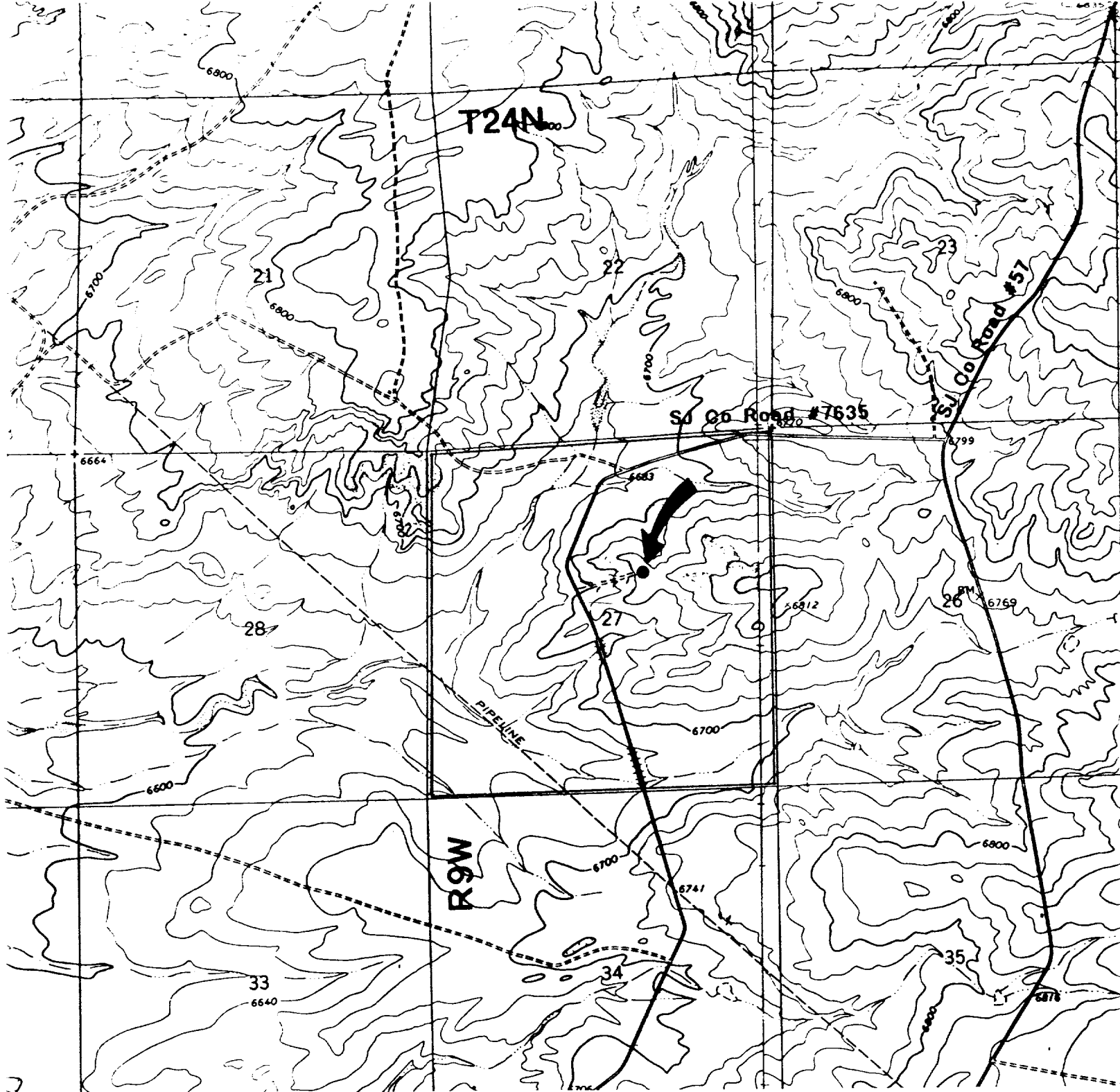
Signature  
*Sherman E. Dugan*  
Printed Name  
Sherman E. Dugan  
Position  
Vice-President  
Company  
Dugan Production Corp.  
Date  
8-22-91

### SURVEYOR CERTIFICATION

I hereby certify that the well location shown on this plat was plotted from field notes of actual surveys made by me or under my supervision, and that the same is true and correct to the best of my knowledge and belief.

Date Surveyed  
August 1, 1991

Signature & Seal of Professional Surveyor  
*Edgar L. Risenhoover*  
Certificate No. 5979  
Edgar L. Risenhoover



### Existing Roads

### Exhibit E

Vicinity of nearest town or reference pt.  
Approx. 6½ miles SW of Blanco Trading Post

Type of surface dirt

Conditions good

Other \_\_\_\_\_

Reference map: USGS map: Huerfano Trading Post SW 1966; Pueblo Bonito NW 1966

### Planned Access Road(s)

### Exhibit E

Width	20'	Maximum grades	5%
Drainage design	as required		
Cuts & Fills	see diagram		
Surfacing material	none		
Turnouts	Waterbars		
Culverts			
Gates			
Cattleguards			
Fence cuts			

Access road(s) do do not cross Fed/Ind land  
R-O-W required: SW/NE, SE/NW Sec 27,