

UNITED STATES  
DEPARTMENT OF THE INTERIOR  
BUREAU OF LAND MANAGEMENT

## APPLICATION FOR PERMIT TO DRILL OR DEEPEN

## 1a. TYPE OF WORK

DRILL ☒DEEPEN ☐

## b. TYPE OF WELL

OIL  
WELL ☐GAS  
WELL ☒

OTHER

SINGLE  
ZONE ☒MULTIPLE  
ZONE ☐

## 2. NAME OF OPERATOR

DUGAN PRODUCTION CORP.

## 3. ADDRESS AND TELEPHONE NO.

P.O. Box 420, Farmington, NM 87499

4. LOCATION OF WELL (Report location clearly and in accordance with any State requirements.)\*  
At surface

790' FSL &amp; 2435' FEL (SW/4 SE/4)

At proposed prod. zone

## 14. DISTANCE IN MILES AND DIRECTION FROM NEAREST TOWN OR POST OFFICE\*

approx. 4 miles northeast of Nageezi, NM

## 16. DISTANCE FROM PROPOSED\*

LOCATION TO NEAREST  
PROPERTY OR LEASE LINE, FT.  
(Also to nearest drilg. unit line, if any)

790'

18. DISTANCE FROM PROPOSED LOCATION\* approx. 3617'  
TO NEAREST WELL, DRILLING, COMPLETED,  
OR APPLIED FOR, ON THIS LEASE, FT. from Bowers #1

## 16. NO. OF ACRES IN LEASE

640

## 19. PROPOSED DEPTH

1890'

17. NO. OF ACRES ASSIGNED  
TO THIS WELL

5/320

## 20. ROTARY OR CABLE TOOLS

Rotary

## 21. ELEVATIONS (Show whether DF, RT, GR, etc.)

6722' GL (est)

## 22. APPROX. DATE WORK WILL START\*

ASAP

## 23.

## PROPOSED CASING AND CEMENTING PROGRAM

SIZE OF HOLE	GRADE, SIZE OF CASING	WEIGHT PER FOOT	SETTING DEPTH	QUANTITY OF CEMENT
9-7/8"	7"	20#	120'	45 sx (53 cu.ft.) circ. to surf.
6-1/4"	4 1/2"	10.5#	1890'	175 sx (307 cu.ft.) circ. to surf.

This section is subject to technical and  
procedural review pursuant to 43 CFR 3100.3  
and approval pursuant to 43 CFR 3100.4.

DRILLING OPERATIONS AUTHORIZED ARE  
SUBJECT TO GUARANTEE WITH ATTACHED  
"GENERAL REGISTRATION"

Plan to drill a 9-7/8" hole and set 120' of 7" OD, 20#, J-55 surface casing; then plan to drill a 6-1/4" hole to total depth with gel-water-mud program to test the Fruitland Coal formation. Plan to run IES and CDL logs. If determined productive, will run 4 1/2", 10.5#, J-55 casing, selectively perforate, frac, clean out after frac and complete well.

RECEIVED  
OCT - 3 1994OIL CON. DIV.  
DIST. 3

IN ABOVE SPACE DESCRIBE PROPOSED PROGRAM: If proposal is to deepen, give data on present productive zones and proposed new productive zone. If proposal is to drill or deepen directionally, give pertinent data on subsurface locations and measured and true vertical depths. Give blowout preventer program, if any.

## 34.

SIGNED

Sherman E. Dugan

TITLE

Vice-President

DATE

8/29/94

(This space for Federal or State office use)

PERMIT NO.

APPROVAL DATE

Application approval does not warrant or certify that the applicant holds legal or equitable title to those rights in the subject lease which would entitle the applicant to conduct operations thereon.  
CONDITIONS OF APPROVAL, IF ANY:

APPROVED BY

TITLE

DATE

SEP 29 1994

\*See Instructions On Reverse Side

Title 18 U.S.C. Section 1001, makes it a crime for any person knowingly and willfully to make to any department, agency or the United States any false, fictitious or fraudulent statements or representations as to any matter within its jurisdiction.

DISTRICT MANAGER

## OIL CONSERVATION DIVISION

PO Box 2088  
Santa Fe, NM 87504-2088 29 PM 3:47

070 FARMINGTON, NM

☐ AMENDED REPORT

## WELL LOCATION AND ACREAGE DEDICATION PLAT

1 API Number 30-045-29174		2 Pool Code 71629		3 Pool Name Basin Fruitland Coal	
4 Property Code 003601		5 Property Name Bowers			6 Well Number 90
7 OGRID No. 006515		8 Operator Name Dugan Production Corporation			9 Elevation 6722' Estimated

### <sup>10</sup> Surface Location

UL or lot no.	Section	Township	Range	Lot Idn	Feet from the	North/South line	Feet from the	East/West line	County
0	17	24N	8W		790	South	2435	East	San Juan

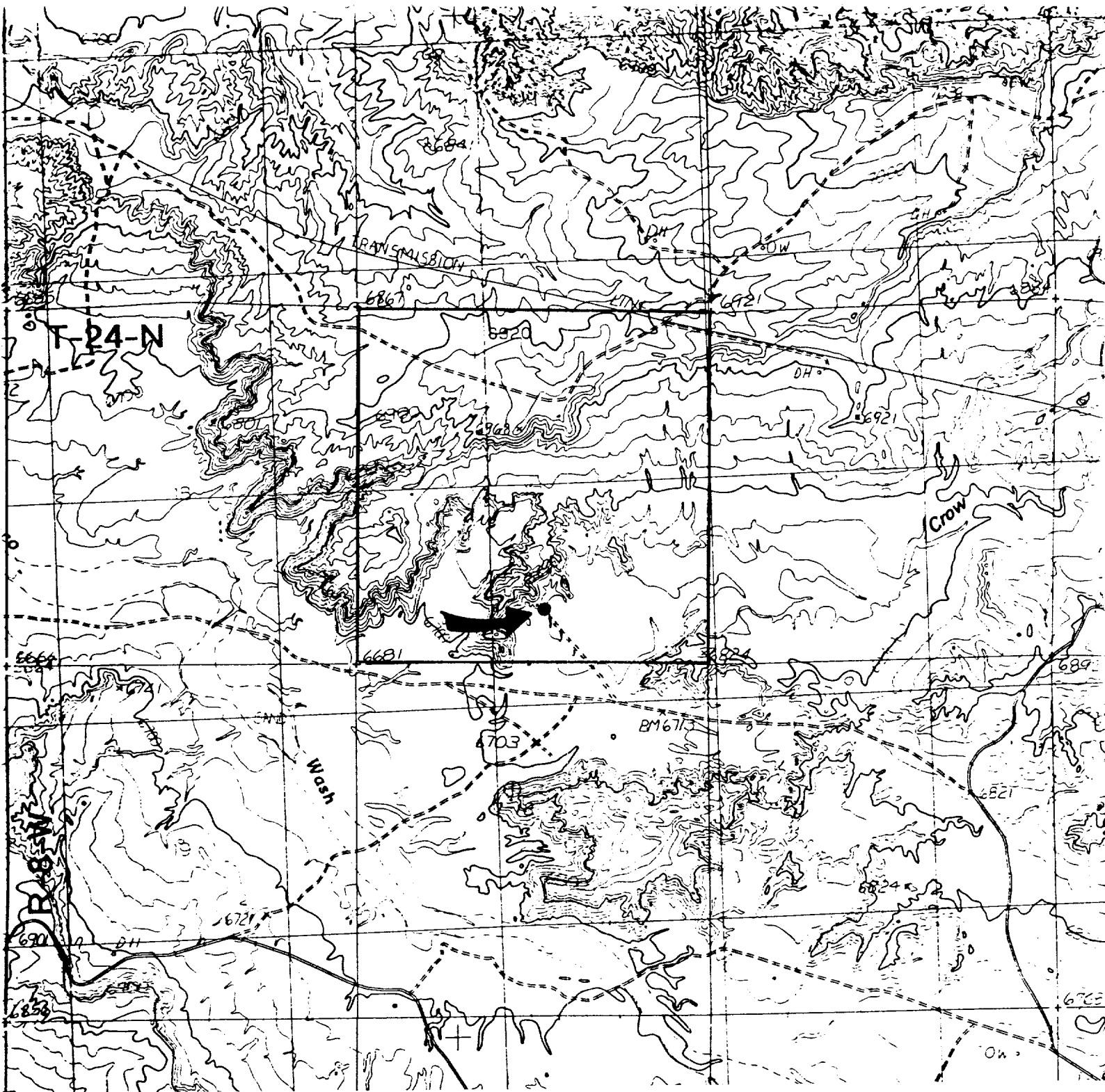
## " Bottom Hole Location If Different From Surface

UL or lot no.	Section	Township	Range	Lot Idn	Feet from the	North/South line	Feet from the	East/West line	County
---------------	---------	----------	-------	---------	---------------	------------------	---------------	----------------	--------

<sup>12</sup> Dedicated Acres 320	<sup>13</sup> Joint or Infill	<sup>14</sup> Consolidation Code	<sup>15</sup> Order No.
--------------------------------------	-------------------------------	----------------------------------	-------------------------

NO ALLOWABLE WILL BE ASSIGNED TO THIS COMPLETION UNTIL ALL INTERESTS HAVE BEEN CONSOLIDATED  
OR A NON-STANDARD UNIT HAS BEEN APPROVED BY THE DIVISION

16		<div data-bbox="527 1132 867 1255"><p>RECEIVED</p><p>OCT - 3 1994</p></div>	1	<div data-bbox="1078 1029 1534 1064"><p>17 OPERATOR CERTIFICATION</p></div> <div data-bbox="1078 1070 1534 1123"><p>I hereby certify that the information contained herein is true and complete to the best of my knowledge and belief</p></div> <div data-bbox="1078 1127 1534 1268"><p><i>Sherman E. Dugan</i></p><p>Signature</p><p>Sherman E. Dugan</p><p>Printed Name</p><p>Vice-President</p><p>Title</p><p>8/29/94</p><p>Date</p></div>
		<div data-bbox="527 1283 867 1381"><p>OIL CON. DIV.</p><p>DIST. 3</p></div>		
	Section 17	<div data-bbox="607 1615 795 1678"><p>Dugan Prod.</p><p>NM 26047</p></div>	<div data-bbox="592 1804 946 1932"><p>790'</p><p>2435'</p></div>	<div data-bbox="1078 1513 1534 1547"><p>18 SURVEYOR CERTIFICATION</p></div> <div data-bbox="1078 1551 1534 1653"><p>I hereby certify that the well location shown on this plat was plotted from field notes of actual surveys made by me or under my supervision, and that the same is true and correct to the best of my belief.</p></div> <div data-bbox="1078 1659 1534 1721"><p>July 21, 1994</p><p>Date of Survey</p></div> <div data-bbox="1078 1727 1534 1979"><p>Signature and Seal of Surveyor:</p><div data-bbox="1172 1717 1461 1970"><p>EDGAR L. RISENHOOVER</p><p>NEW MEXICO</p><p>6979</p><p>SURVEYOR</p></div><p><i>Edgar L. Risenhoover</i></p><p>Certificate Number</p></div>



Existing Roads

EXHIBIT E

Dugan Production Corp. - Bowers #90  
Vicinity of nearest town or reference pt.  
approx. 4 miles northeast of Nageezi, NM

Type of surface dirt

Conditions good

Other \_\_\_\_\_

Reference map: USGS map - Crow Mesa West, NM

Planned Access Road(s)

EXHIBIT E

Width 20' Maximum grades 2%  
Drainage design as required  
Cuts & Fills as required  
Surfacing material \_\_\_\_\_  
    ↳ Turnouts                      ↳ Waterbars  
    ↳ Culverts  
    ↳ Gates  
    ↳ Cattleguards  
    ↳ Fence cuts

Access road(s) (do) do not cross (Fed) Ind land.