

UNITED STATES  
DEPARTMENT OF THE INTERIOR  
BUREAU OF LAND MANAGEMENT

SUBMIT IN TRIPLICATE  
(Other instructions on  
reverse side)

FORM APPROVED  
OMB NO. 1004-0136  
Expires: February 28, 1995

APPLICATION FOR PERMIT TO DRILL OR DEEPEN

1a. TYPE OF WORK  
DRILL ☒ DEEPEN ☐

b. TYPE OF WELL  
OIL WELL ☐ GAS WELL ☒ OTHER ☐ SINGLE SOLE ☒ MULTIPLE SOLE ☐

2. NAME OF OPERATOR  
DUGAN PRODUCTION CORP. 6515

3. ADDRESS AND TELEPHONE NO.  
P.O. Box 420, Farmington, NM 87499

4. LOCATION OF WELL (Report location clearly and in accordance with any State requirements.)  
At surface  
1050' FNL & 1520' FEL (NW/4 NE/4)  
At proposed prod. zone

14. DISTANCE IN MILES AND DIRECTION FROM NEAREST TOWN OR POST OFFICE  
approx. 6 miles south of Blanco Trading Post, NM

15. DISTANCE FROM PROPOSED LOCATION TO NEAREST PROPERTY OR LEASE LINE, FT.  
(Also to nearest drig. unit line, if any) 1120'

16. NO. OF ACRES IN LEASE 1721.01

17. NO. OF ACRES ASSIGNED TO THIS WELL E/320

18. DISTANCE FROM PROPOSED LOCATION TO NEAREST WELL, DRILLING, COMPLETED, OR APPLIED FOR, ON THIS LEASE, FT. from April Sur #2 approx. 4144'

19. PROPOSED DEPTH 6052'

20. ROTARY OR CABLE TOOLS Rotary

21. ELEVATIONS (Show whether DF, RT, GR, etc.)  
6830' GL (est)

22. APPROX. DATE WORK WILL START  
ASAP

5. LEASE DESIGNATION AND SERIAL NO. DNM 4958

6. INDIAN, ALLOTTEE OR TRIBE NAME

7. CONTRACT AGREEMENT NAME

8. NAME OF LEASE NAME, WELL NO. 3574  
April Surprise #7

9. AP WELL NO. 30-045-29293

10. FIELD AND POOL, OR WILDCAT Basin Dakota 71599

11. SEC., T., R., M., OR BLM. AND SURVEY OR AREA  
Unit B,  
Sec. 31, T24N, R9W

12. COUNTY OR PARISH San Juan

13. STATE NM

23. PROPOSED CASING AND CEMENTING PROGRAM

SIZE OF HOLE	GRADE SIZE OF CASING	WEIGHT PER FOOT	SETTING DEPTH	QUANTITY OF CEMENT
12-1/4"	8-5/8"	24#	200'	160 cf circ. to surface
7-7/8"	4-1/2"	10.5#	6052'	2220 cf circ. to surface

Plan to drill a 12-1/4" hole and set 200' of 8-5/8" OD, 24#, J-55 surface casing; then plan to drill a 7-7/8" hole to total depth with gel-water-mud program to test the Dakota formation. Plan to run IES and CDL logs. If determined productive, will run 4-1/2", 10.5#, J-55 casing with stage tool, selectively perforate, frac, clean out after frac and complete well.

RECEIVED  
OCT 18 1995  
OIL CON. DIV.  
DIST. 3

IN ABOVE SPACE DESCRIBE PROPOSED PROGRAM: If proposal is to deepen, give data on present productive zone and proposed new productive zone. If proposal is to drill or deepen directionally, give pertinent data on subsurface locations and measured and true vertical depths. Give blowout preventer program, if any.

24. SIGNED Sherman E. Dugan TITLE Vice-President DATE 10/5/95  
(This space for Federal or State office use)

PERMIT NO. \_\_\_\_\_ APPROVAL DATE \_\_\_\_\_

Application approval does not warrant or certify that the applicant holds legal or equitable title to those rights in the subject lease which would entitle the applicant to conduct operations thereon.  
CONDITIONS OF APPROVAL, IF ANY:

APPROVED BY OK TITLE \_\_\_\_\_ DATE OCT 16 1995

\*See Instructions On Reverse Side

Title 18 U.S.C. Section 1001, makes it a crime for any person knowingly and willfully to make to any department or agency of the United States any false, fictitious or fraudulent statements or representations as to any matter within its jurisdiction.

DISTRICT MANAGER

District I  
PO Box 1980, Hobbs, NM 88241-1980  
District II  
PO Drawer DD, Artesia, NM 88211-0719  
District III  
1000 Rio Brazos Rd., Aztec, NM 87410  
District IV  
PO Box 2088, Santa Fe, NM 87504-2088

State of New Mexico  
Energy, Minerals & Natural Resources Department

OIL CONSERVATION DIVISION  
PO Box 2088  
Santa Fe, NM 87504-2088

Form C-102  
Revised February 21, 1994  
Instructions on back  
Submit to Appropriate District Office  
State Lease - 4 Copies  
Fee Lease - 3 Copies

☐ AMENDED REPORT

WELL LOCATION AND ACREAGE DEDICATION PLAT

API Number 30-045-29293	Pool Code 71599	Pool Name Basin Dakota
Property Code 003579	Property Name April Surprise	Well Number 7
OGRID No. 006515	Operator Name Dugan Production Corporation	Elevation 6830' Estimated

10 Surface Location

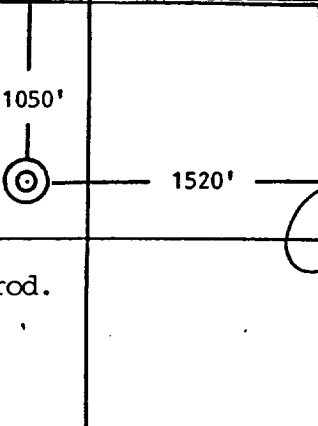
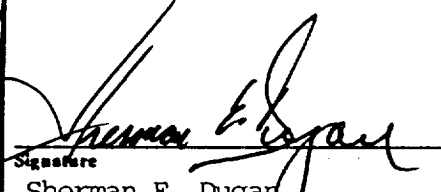

UL or lot no. B	Section 31	Township 24N	Range 9W	Lot Idn	Feet from the 1050	North/South line North	Feet from the 1520	East/West line East	County San Juan
--------------------	---------------	-----------------	-------------	---------	-----------------------	---------------------------	-----------------------	------------------------	--------------------

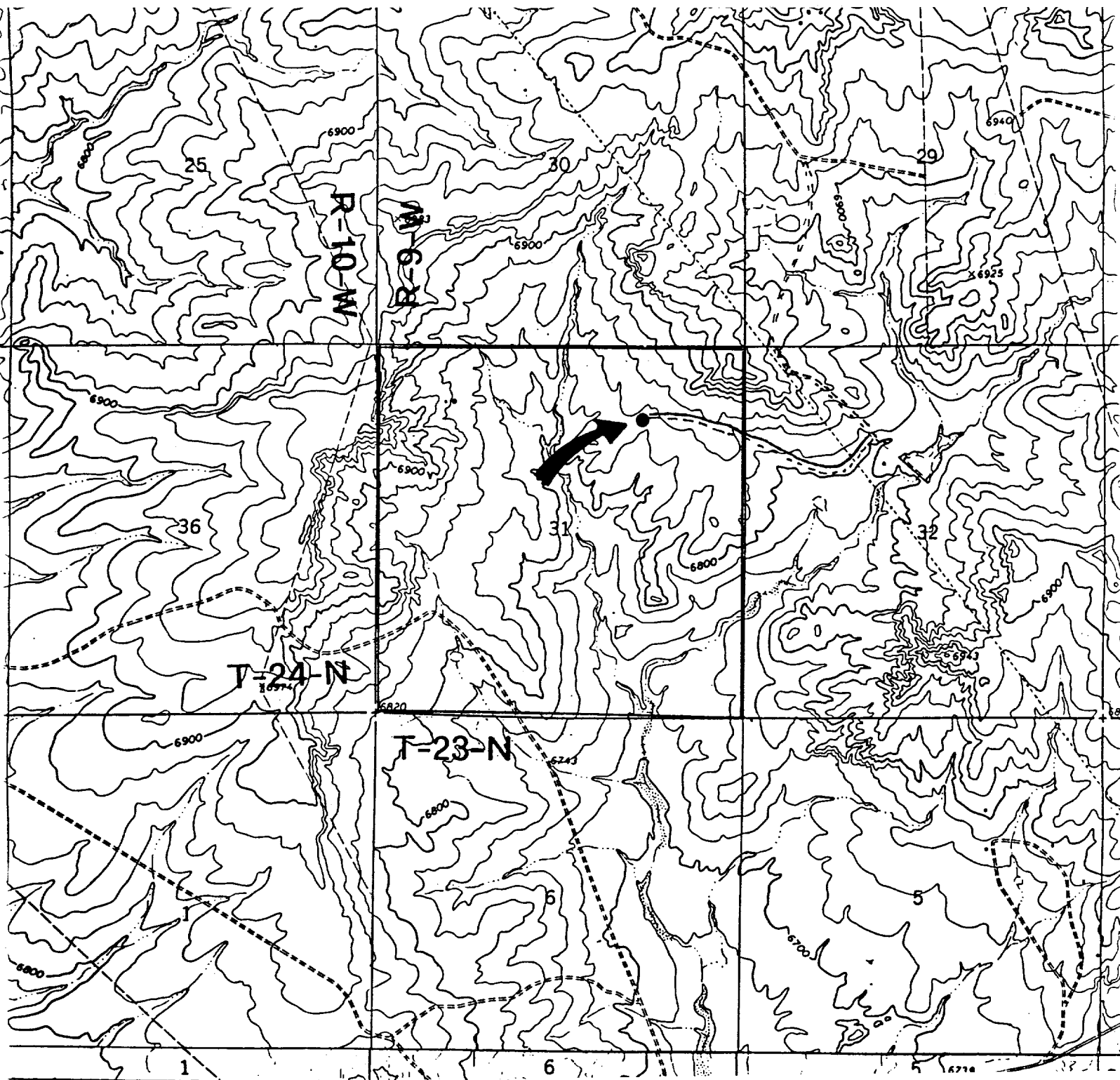
11 Bottom Hole Location If Different From Surface

UL or lot no.	Section	Township	Range	Lot Idn	Feet from the	North/South line	Feet from the	East/West line	County
---------------	---------	----------	-------	---------	---------------	------------------	---------------	----------------	--------

Dedicated Acres 320	Joint or Infill	Consolidation Code	Order No.
------------------------	-----------------	--------------------	-----------

NO ALLOWABLE WILL BE ASSIGNED TO THIS COMPLETION UNTIL ALL INTERESTS HAVE BEEN CONSOLIDATED  
OR A NON-STANDARD UNIT HAS BEEN APPROVED BY THE DIVISION

16	 <p>Dugan Prod. NM 4958</p> <p>Section 31</p>	17 OPERATOR CERTIFICATION I hereby certify that the information contained herein is true and complete to the best of my knowledge and belief  Signature Sherman E. Dugan Printed Name Vice-President Title 10/5/95 Date
RECEIVED OCT 18 1995 OIL CON. DIV. DIST. 3		18 SURVEYOR CERTIFICATION I hereby certify that the well location shown on this plat was plotted from field notes of actual surveys made by me or under my supervision, and that the same is true and correct to the best of my belief. August 22, 1995 Date of Survey Signature and Seal of Professional Surveyor  Certificate Number



Dugan Production Corp. - April Surprise #7

Existing Roads

Exhibit E

Vicinity of nearest town or reference pt.  
approx. 5 miles south of Blanco Trading Post

Type of surface dirt

Conditions good

Other \_\_\_\_\_

Reference map: USGS map Blanco Trading  
Post, NM.

Planned Access Road(s)

Exhibit E

Width 20' Maximum grades 5%  
Drainage design as required  
Cuts & Fills as required  
Surfacing material none  
    ↳ Turnouts      ↳ Waterbars  
    ↳ Culverts  
    ↳ Gates  
    ↳ Cattleguards      ↳ Access Road &  
    ↳ Fence cuts      ↳ Pipeline

Access road(s) (do) do not cross (Fed) Ind land