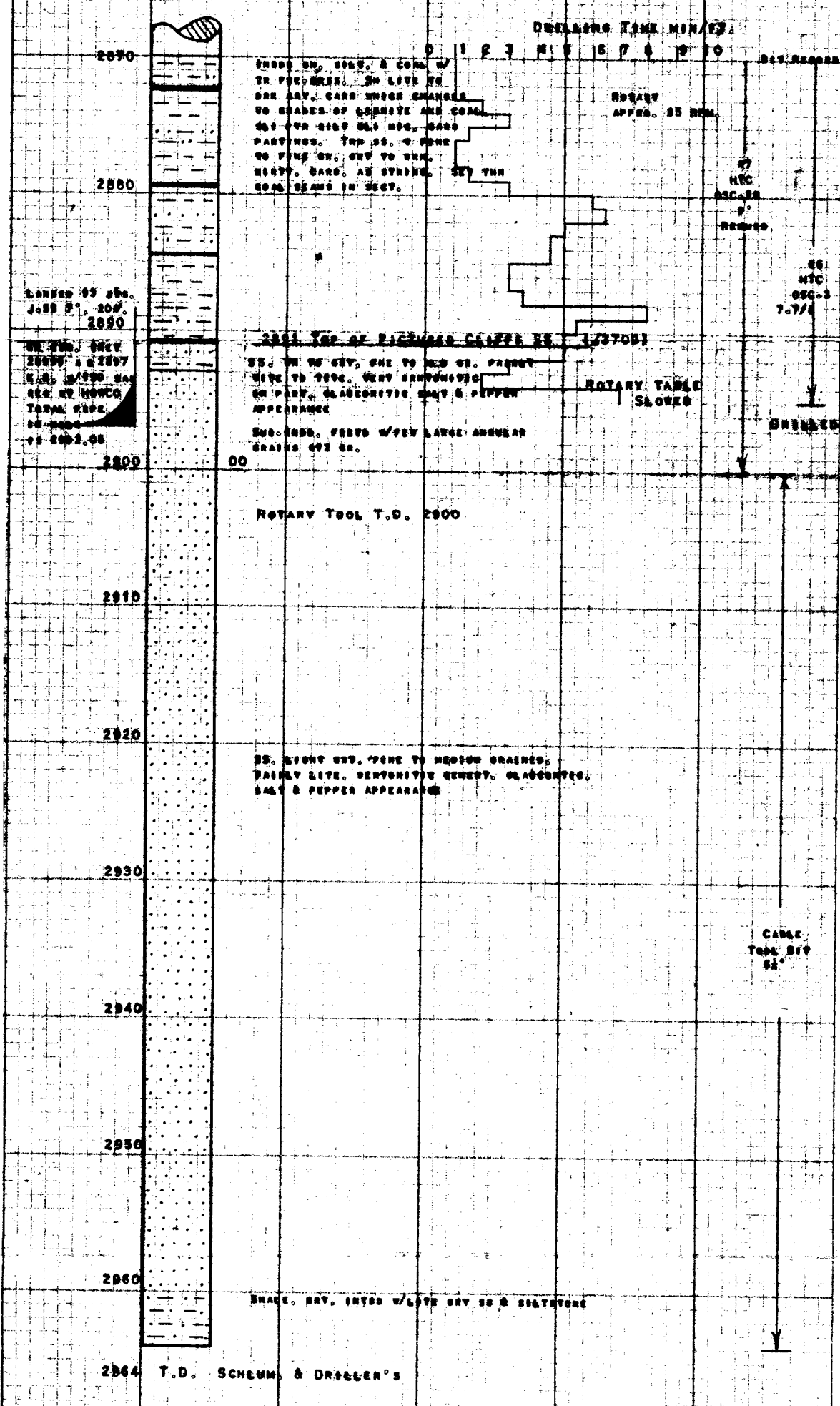


THE OHIO OIL COMPANY
 JACOBLIG #2 Well
 900 S. LISOLE, Sec. 33, T. 20N, R. 5W
 110 AFFRICA COUNTY, NEW MEXICO
 Elevation: 6587' Gr.
 6800' N.B.

Detail Log



CASING RECORD:
 SURFACE RAN 7 JOISTS, 10 1/2" OD, 32# BR CASING NET 208.95'
 LANDED AT 219.53' K.B. WITH 150 SAK REG. BY HOWCO. DISPLACED
 CASING WITH 2 1/2" BBL WATER. PLUG DOWN AT 3:30 P.M.
 10/9/55. GOOD RETURNS. TOP PLUG 198' K.B.
PRODUCTION: RAN 93 JOISTS, 7 1/2" OD, J-55, 20# BR CASING NET
 2899'. TOTAL PIPE 2802.05 WITH 1 SLIP JO (1.50') AND 4 INCH COLLAR
 AT 277'. LANDED AT 2897' K.B. WITH 150 SAK REG. BY HOWCO. DISPLACED
 CASING WITH 2 1/2" BBL WATER. OVERDISPLACED 50 SAK. DISPLACED SURF
 PLUG. FOUND PLUG AT 2875. 10/16/55.
DRILL STEM TEST RECORD: NONE RUN.
WELL HISTORY:
 10/7/55 MAST UP
 10/8/55 RIGGING AND DRILLING SURFACE HOLE.
 10/9/55 RAN SURFACE CASING
 10/15/55 RAN SCHLUMBERGER LINES AND RAN PRODUCTION CASING
 10/16/55 RELEASED RIG AT 4:00 A.M.
 10/28/55 MOVED ON CABLE TOOLS
 10/30/55 PERFORATED AND SQUEEZED CEMENT
 11/1/55 DRILLING SANDSTONE SECTION
 11/2/55 RAN SCHLUMBERGER GR. TEMP. INDUCTION
 11/4/55 RAN TUBING & SAND FRACTURE
 11/8/55 SHUT-IN & FLOWING WELL
 11/9/55 SHUT-IN
 11/23/55 COMPLETED
TREATMENT RECORD:
 10/30/55 PERFORATED CASING FROM 2882-2884 WITH 4 HOLES
 BY WELM. SQUEEZED FROM 2882-2900 WITH 75 SAK
 REG BY HOWCO. SWAGED OPEN 4 TIMES. FINAL
 SQUEEZE PRESSURE 3000#.
 11/4/55 SAND-PAC FROM 2897-2899 WITH 45000# SAK AND
 36,160 GAL WATER (7.25# SAK/GAL) BY HOWCO.
 BROKE DOWN FROM WITH 1200# ON THE 11/11/55 ON
 CASING. AVERAGE INJECTION RATE 32.8 GPM/HOUR.
 MAX. PRESSURE ON TUBING: 2200# TUBING: 2800# G.S.
 FINAL PRESSURE 700#. Displaced casing with
 3000 GAL WATER.
 11/5/55 SWABBING
COMPLETION DATA:
 CALCULATED OPEN FLOW 11,100 MCFG/D
 SICP 1822# (GLUDED 704 MCFG/D NATURAL)

Geologist and Log by GEORGE F. DANA
 Supervised by E. P. CHEPMAN

PERFECT-CROSS SECTION
 10 X 10 - ONE INCH
 EUGENE DIETZGEN CO.
 ON 100% RAG PAPER MADE IN U.S.A.