

NEW MEXICO
OIL CONSERVATION COMMISSION

Form C-128

WELL LOCATION AND/OR GAS PRORATION PLAT

DATE April 15, 1957

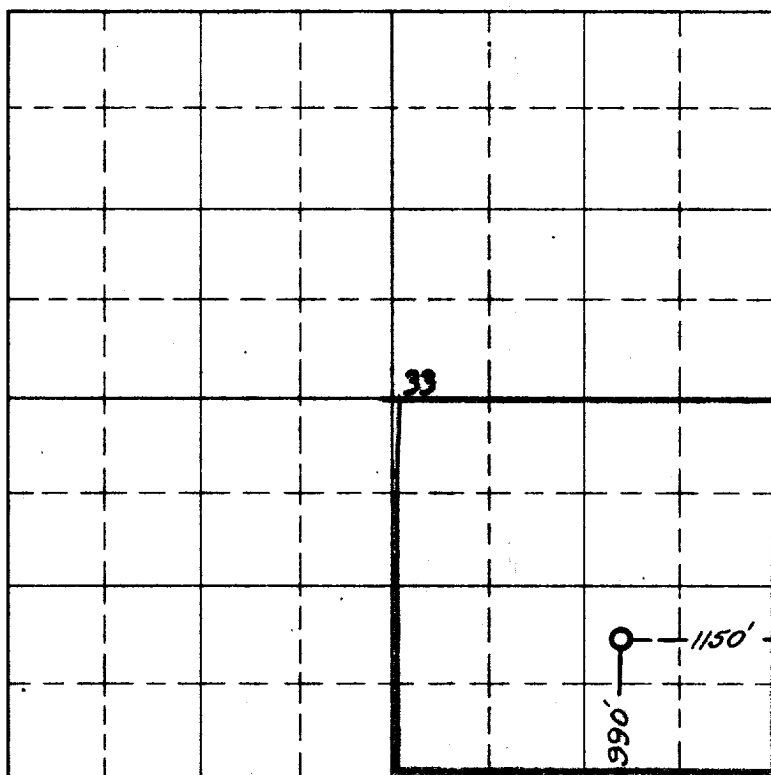
OPERATOR THE OHIO OIL COMPANY LEASE JICABILLA

WELL NO. 2 SECTION 33 TOWNSHIP 26 NORTH RANGE 5 WEST NMPM

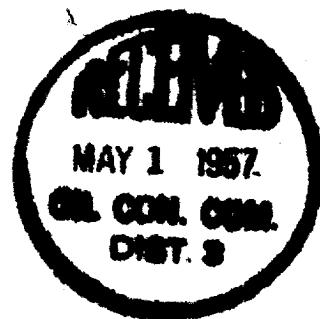
LOCATED 990 FEET FROM the SOUTH LINE 1150 FEET FROM the EAST LINE
RIO ARRIBA COUNTY, NEW MEXICO G.L. ELEVATION 6588.5 UNGRADED.

NAME OF PRODUCING FORMATION Pictured Cliffs POOL So. Blanco DEDICATED ACREAGE 160.00

Note: All distances must be from outer boundaries of section.



Scale 4 inches equal 1 mile



NOTE

This section of
form is to be used
for gas wells only

This is to certify that the above plat was prepared from
field notes of actual surveys made by me or under my
supervision and that the same are true and correct to the
best of my knowledge and belief.

Date Surveyed 8 SEPTEMBER 1955

James P. Leese
Registered Professional Engineer and/or Land Surveyor
JAMES P. LEESSE
N. MEX. REG. NO. 1083

(Seal)

1. Is this well a Dual Comp.
Yes _____ No X
2. If the answer to Question 1
is yes, are there any other dually
completed wells within the
dedicated acreage.
Yes _____ No _____

Name M. J. Boyce

Position Division Production Supt.

Representing The Ohio Oil Company

Address Box 120, Casper, Wyoming

OIL CONSERVATION COMMISSION**AZTEC DISTRICT OFFICE**No. Copies Received 2**DISTRIBUTION**

	NO. FURNISHED	
Operator		
Santa Fe	1	
Proration Office		
State Land Office		
U. S. G. S.		
Transporter		
File	1	✓