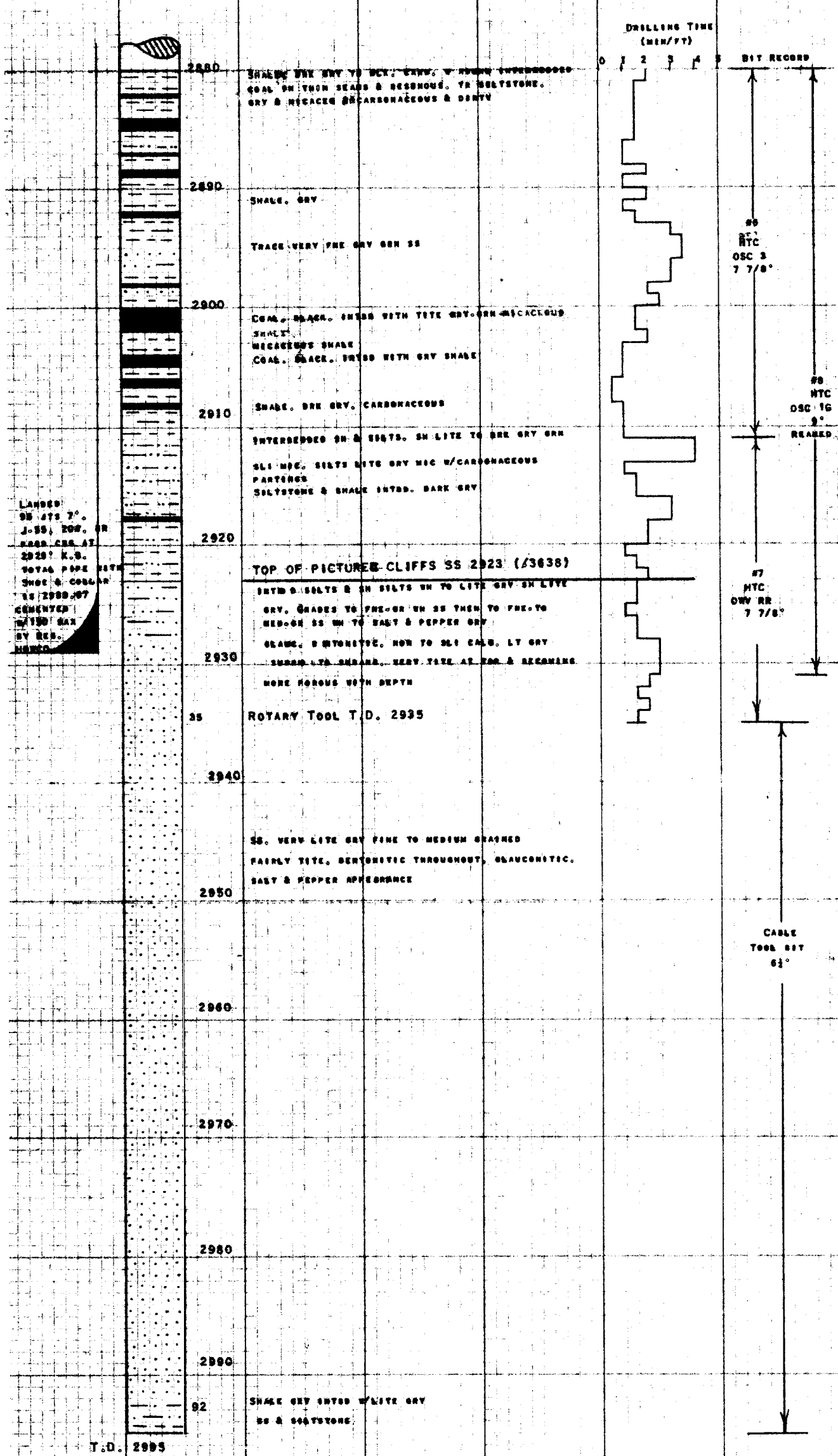


THE OHIO OIL COMPANY
 Jicartilla #3 Well
 990/W., 990/W., Sec. 34, T26N., R5W.
 Rio Arriba County, New Mexico

Elevation: 6548' Gr.
 6581' K.B.

Detail Log



CASING RECORD:
 SURFACE: RAN 7 JOINTS 3 1/4" N-40, 328', 8R OD CASING NET 206.85'
 BAKER SHOE 1.25'. TOTAL PIPE 210.11'. LANDED AT 224.21' K.B.
 WITH 150 SAX REG BY HOWCO. DISPLACED CASING WITH 22.5 BBL
 WATER. PLUS DOWN 9:00 P.M. 10/18/55. GOOD RETURNS
 P.B.T.D. 2935' K.B.

PRODUCTION: RAN 96 JOINTS, 7" OD, J-55, 207', 8R CASING NET 2930.94'
 BAKER SHOE 1.25'. FLOAT COLLAR 1.48'. TOTAL PIPE 2933.67'. LANDED
 AT 2929' K.B. CEMENTED WITH 150 SAX REG BY HOWCO. DISPLACED
 CASING WITH 125 BBL WATER. BUMPED PLUS WITH 1200W.
 P.B.T.D. 2906' K.B.

DRILL STEM TEST:
 NONE RUN

WELL HISTORY:
 10/17/55 RIGGING UP
 10/18/55 DRILLED SURFACE HOLE & RUN SURFACE CASING
 10/28/55 RAN SCHLUMBERGER LOGS
 10/28/55 RAN PRODUCTION CASING & RELEASED ROTARY RIG
 11/7/55 BAILED HOLE WITH CABLE TOOLS
 11/9/55 RAN TUBING
 11/10/55 SAND FRAC & SWABBING
 11/10/55 RELEASED RIG WELL BLEW IN
 11/14/55 SHUT-IN

TUBING RECORD:
 RAN 54 JOINTS 2 3/8", 4.7#, J-55, 8 R. NET 2935.22'. ANCHOR JOINT
 30.80'. PUPS 4' & 5' TOTAL TUBING 2976.03'. LANDED 2988.53' K.B.

TREATMENT RECORD:
 NATURAL FLOW 8,840 CPM/D THROUGH 2" TUBING. SAND FRACED
 FROM 2929-2935 WITH 45,000# SAND AND 37,200' GAL WATER (1.21# GAL)
 FORMATION BROKE DOWN WITH 2750' ON TUBING, 1375' ON CASING
 (MAX PRESS). AVERAGE INJECTION RATE 25# BBL/MIN. FINAL PRESSURE
 850#. TOTAL TREATMENT TIME 41 MIN. PUMPER 20 BBL WATER AHEAD OF SAND.
 FLUSHED WITH 125 BBL WATER. SWABBED WELL. GAUGED 1,990 MCF THRU
 1" SIDE STATIC RIPPLE W/200# ON TUBING. 11/14/55 SHUT-IN

COMPLETION DATA:
 CALCULATED OPEN FLOW 1,480 MCF/GPD
 SIC PRESSURE 850#

GEOLOGY: WENDELL COLE
LOGS: GEORGE DANA
SUPERVISOR: E. P. CHEPMAN

NEW MEXICO
OIL CONSERVATION COMMISSION

Form C-128

WELL LOCATION AND/OR GAS PRORATION PLAT

DATE April 15, 1957

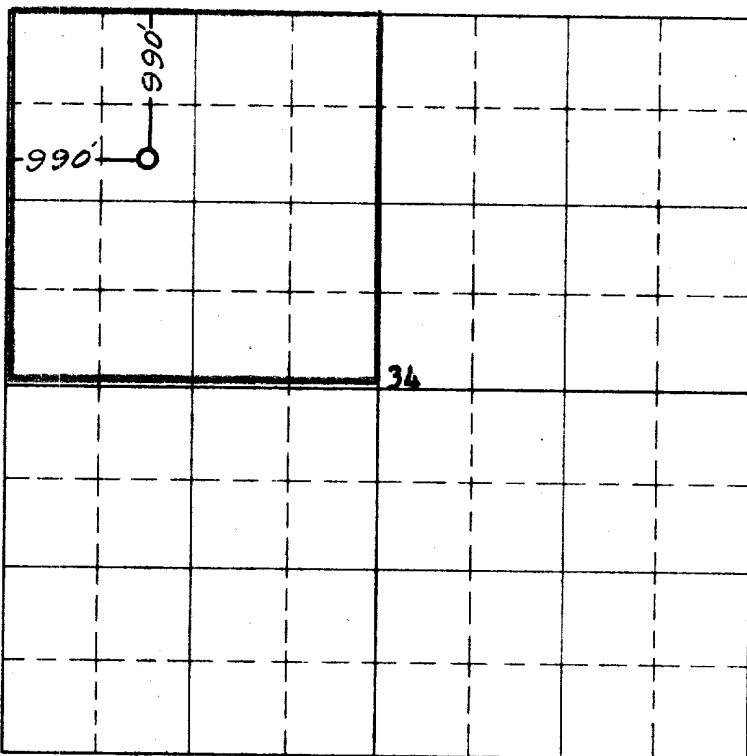
OPERATOR THE OHIO OIL COMPANY LEASE JIGARILLA

WELL NO. 3 SECTION 34 TOWNSHIP 26 NORTH RANGE 5 WEST, NMPM

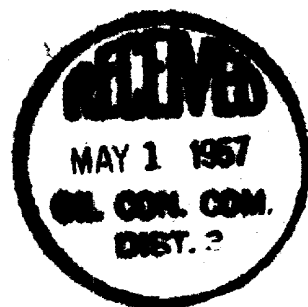
LOCATED 990 FEET FROM the NORTH LINE 990 FEET FROM the WEST LINE
RIO ARRIBA COUNTY, NEW MEXICO G.L. ELEVATION 6549.7 UNGRADED.

NAME OF PRODUCING FORMATION Pictured Cliffs FOOT So. Blanco DEDICATED ACREAGE 180.00

Note: All distances must be from outer boundaries of section.



Scale 4 inches equal 1 mile



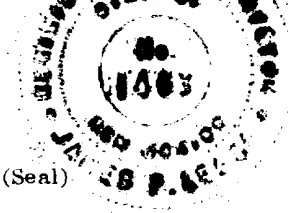
NOTE
This section of form is to be used for gas wells only

This is to certify that the above plat was prepared from field notes of actual surveys made by me or under my supervision and that the same are true and correct to the best of my knowledge and belief.

Date Surveyed 8 SEPTEMBER, 1955

James P. Reese
Registered Professional Engineer and/or Land Surveyor

JAMES P. REESE
H. MEX. 1463



Farmington, New Mexico

1. Is this well a Dual Comp.
Yes _____ No X
2. If the answer to Question 1 is yes, are there any other dually completed wells within the dedicated acreage.
Yes _____ No _____

Name M. J. Boyce
Position Division Production Supt.
Representing The Ohio Oil Company
Address Box 120, Casper, Wyoming

OIL CONSERVATION COMMISSION		
AZTEC DISTRICT OFFICE		
No. Copies Received		2
DISTRIBUTION		
	NO. FURNISHED	
Operator		
Santa Fe	1	
Proration Office		
State Land Office		
U. S. G. S.		
Transporter		
File	1	✓