

NEW MEXICO
OIL CONSERVATION COMMISSION

Form C-128

WELL LOCATION AND/OR GAS PRORATION PLAT

DATE April 15, 1957

OPERATOR THE OHIO OIL COMPANY LEASE JICARILLA

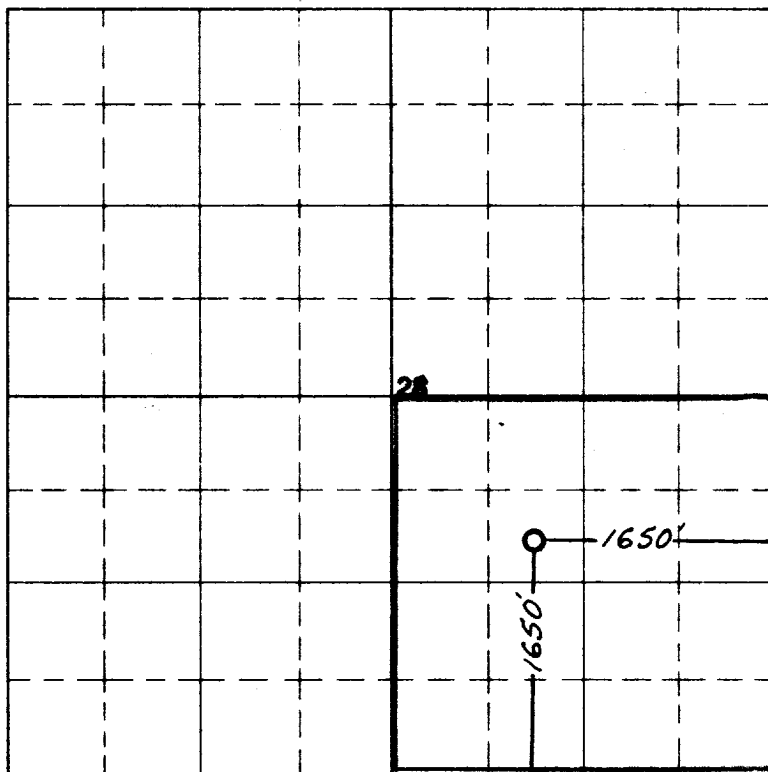
WELL NO. 6 SECTION 28 TOWNSHIP 26 NORTH RANGE 5 WEST NMPM

LOCATED 1650 FEET FROM the SOUTH LINE 1650 FEET FROM the EAST LINE

RIO ARRIBA COUNTY, NEW MEXICO G.L. ELEVATION 6684.7 UNGRADED.

NAME OF PRODUCING FORMATION Pictured Cliffs POOL So. Blanco DEDICATED ACREAGE 160.00

Note: All distances must be from outer boundaries of section.



Scale 4 inches equal 1 mile

MAY 1 1957

NOTE

This section of
form is to be used
for gas wells only

This is to certify that the above plat was prepared from
field notes of actual surveys made by me or under my
supervision and that the same are true and correct to the
best of my knowledge and belief.

Date Surveyed 2 NOVEMBER 1955

James P. Leese
Registered Professional Engineer and/or Land Surveyor

JAMES P. LEESE
N. M. REG. NO. 1463



1. Is this well a Dual Comp.

Yes _____ No X

2. If the answer to Question 1

is yes, are there any other dually
completed wells within the
dedicated acreage.

Yes _____ No _____

Name M. J. Boyce

Position Division Production Supt.

Representing The Ohio Oil Company

Address Box 120, Casper, Wyoming

OIL CONSERVATION COMMISSION		
AZTEC DISTRICT OFFICE		
No. Copies Received		2
DISTRIBUTION		
	NO. FURNISHED	
Operator		
Santa Fe	1	
Peroration Office		
State Land Office		
U. S. G. S.		
Transporter		
File	1	✓