

COPY FOR
STATE OF NEW MEXICO
OIL CONSERVATION
COMMISSION
SUBMIT IN TRIPLICATE TO
DISTRICT OFFICE

UNITED STATES
DEPARTMENT OF THE INTERIOR
GEOLOGICAL SURVEY

Land Office _____
Lease No. **3.7.**
Unit **079304-4**
SE/4 is designated drilling unit.

SUNDRY NOTICES AND REPORTS ON WELLS

NOTICE OF INTENTION TO DRILL.....	<input checked="" type="checkbox"/>	SUBSEQUENT REPORT OF WATER SHUT-OFF.....
NOTICE OF INTENTION TO CHANGE PLANS.....		SUBSEQUENT REPORT OF SHOOTING OR ACIDIZING.....
NOTICE OF INTENTION TO TEST WATER SHUT-OFF.....		SUBSEQUENT REPORT OF ALTERING CASING.....
NOTICE OF INTENTION TO RE-DRILL OR REPAIR WELL.....		SUBSEQUENT REPORT OF REDRILLING OR REPAIR.....
NOTICE OF INTENTION TO SHOOT OR ACIDIZE.....		SUBSEQUENT REPORT OF ABANDONMENT.....
NOTICE OF INTENTION TO PULL OR ALTER CASING.....		SUPPLEMENTARY WELL HISTORY.....
NOTICE OF INTENTION TO ABANDON WELL.....		

(INDICATE ABOVE BY CHECK MARK NATURE OF REPORT, NOTICE, OR OTHER DATA)

RELEASED
JUL 16 1952
OIL CON. COM.
DIST 3

July 10, _____, 1952

Federal Sanches

Well No. 1 is located 1650 ft. from NE line and 1650 ft. from E line of sec. 20

SE/4, Section 20

(1/4 Sec. and Sec. No.)

26N

(Twp.)

6W

(Range)

R. 1 E. 1 N.

(Meridian)

Wildcat DOGIE-CANYON (EXT)

(Field)

Rio Arriba

(County or Subdivision)

N. M.

(State or Territory)

The elevation of the derrick floor above sea level is _____ **ft to be furnished later.**

DETAILS OF WORK

(State names of and expected depths to objective sands; show sizes, weights, and lengths of proposed casings; indicate muddling jobs, cementing points, and all other important proposed work)

It is intended to test the Pictured Cliffs formation expected around 3000'.

Casing Program:

Approximately 300' of 8-5/8" OD Casing cemented with 200 lbs.

" 3000' of 5-1/2" OD Casing cemented with 200 lbs.

I understand that this plan of work must receive approval in writing by the Geological Survey before operations may be commenced.

Company Ed W. Connolly

Address 616 E. Central

Albuquerque, N.M.

By Ed W. Connolly

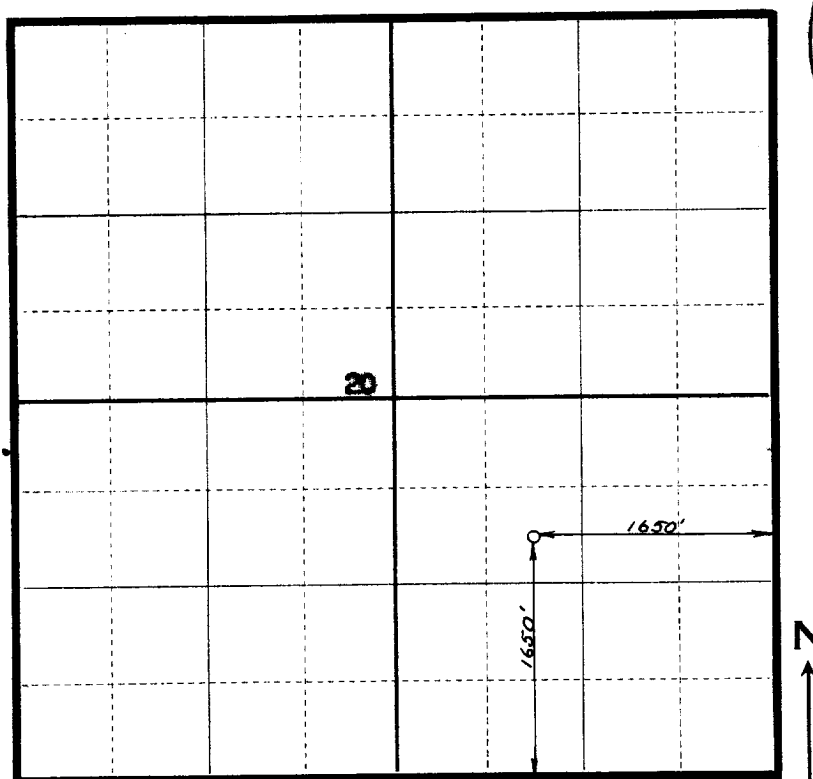
Title Owner

Company Lewy Et Al., Operating Account

Lease _____ Well No. _____

Section 20 Township 26 North Range 6 West N. M. P. M.

Location 1650 feet from South line and 1650 feet from
East line of Section



Bio Arriba County, New Mexico. Scale: 4 Inches = 1 Mile.

This is to certify that the above plat was made from field notes of actual surveys made by me or under my supervision and that the representations thereon set forth are true and correct to the best of my knowledge and belief.

Edmund Ross
NEW MEXICO REGISTERED PROFESSIONAL ENGINEER
AND/OR LAND SURVEYOR NO. 61

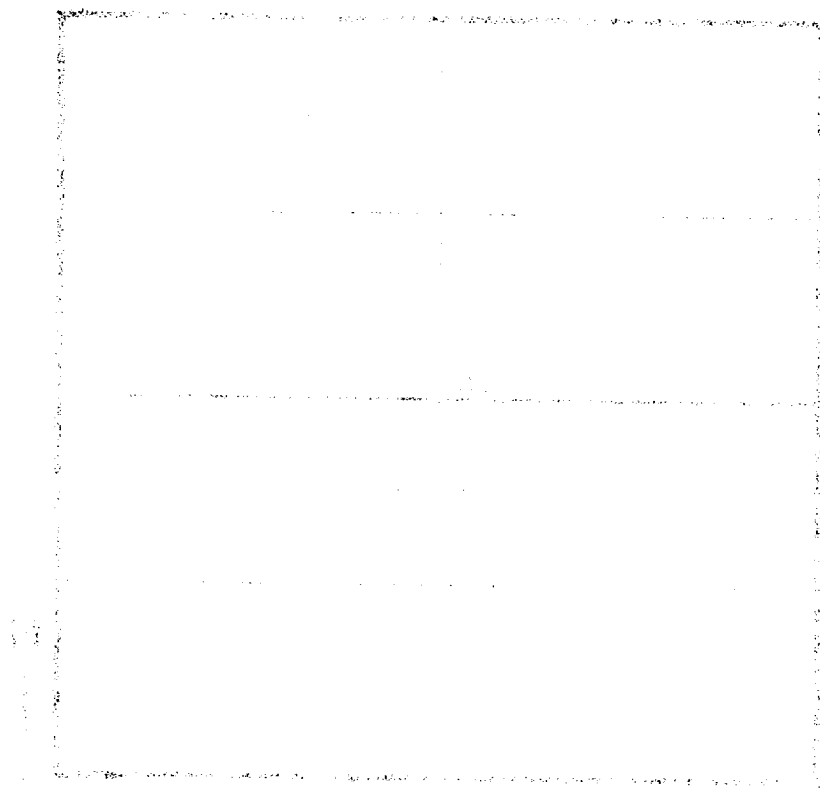
Seal:

Surveyed November 27th, 1951

1. The first part of the paper is devoted to the study of the properties of the function $f(x)$ defined by the equation $f(x) = \int_0^x f(t) dt$. It is shown that $f(x)$ is a constant function.

2. The second part of the paper is devoted to the study of the properties of the function $f(x)$ defined by the equation $f(x) = \int_0^x f(t) dt$. It is shown that $f(x)$ is a constant function.

3. The third part of the paper is devoted to the study of the properties of the function $f(x)$ defined by the equation $f(x) = \int_0^x f(t) dt$. It is shown that $f(x)$ is a constant function.



4. The fourth part of the paper is devoted to the study of the properties of the function $f(x)$ defined by the equation $f(x) = \int_0^x f(t) dt$. It is shown that $f(x)$ is a constant function.

5. The fifth part of the paper is devoted to the study of the properties of the function $f(x)$ defined by the equation $f(x) = \int_0^x f(t) dt$. It is shown that $f(x)$ is a constant function.

6. The sixth part of the paper is devoted to the study of the properties of the function $f(x)$ defined by the equation $f(x) = \int_0^x f(t) dt$. It is shown that $f(x)$ is a constant function.

7. The seventh part of the paper is devoted to the study of the properties of the function $f(x)$ defined by the equation $f(x) = \int_0^x f(t) dt$. It is shown that $f(x)$ is a constant function.