

C
Louis Dreyfus Natural Gas Corp.

Quail Springs Corporate Park
14000 Quail Springs Parkway, Suite 000
Oklahoma City, OK 73154
405 749 1500

September 20, 1994

**Oil Conservation Commission
P.O. Box 2088
Santa Fe, NM. 87504-2088**

RECEIVED
SEP 23 1994
OIL CON. DIV.
DIST. 3


**Re: Lease #NMSF-079162
Intent to Surface Commingle
MKL #2R- 1075'FSL & 1580'FWL (SESW)
MKL #2 - 1592'FSL & 847'FWL (SW/4)
Section 5, T-26N R-7W
Rio Arriba County, New Mexico**

Gentlemen:

Louis Dreyfus Natural Gas Corp. requests approval to surface commingle a pipeline from the MKL No.2R and MKL No.2 wells. Because El Paso is declining to connect their gas line to the mentioned MKL No.2R well, the intent is to lay the pipeline northwest about 1000' to the MKL No.2 sales line, and then place a check meter on the line from the MKL No.2R for allocation purposes.

Enclosed is a copy of the map showing the proposed pipeline.

Sincerely,



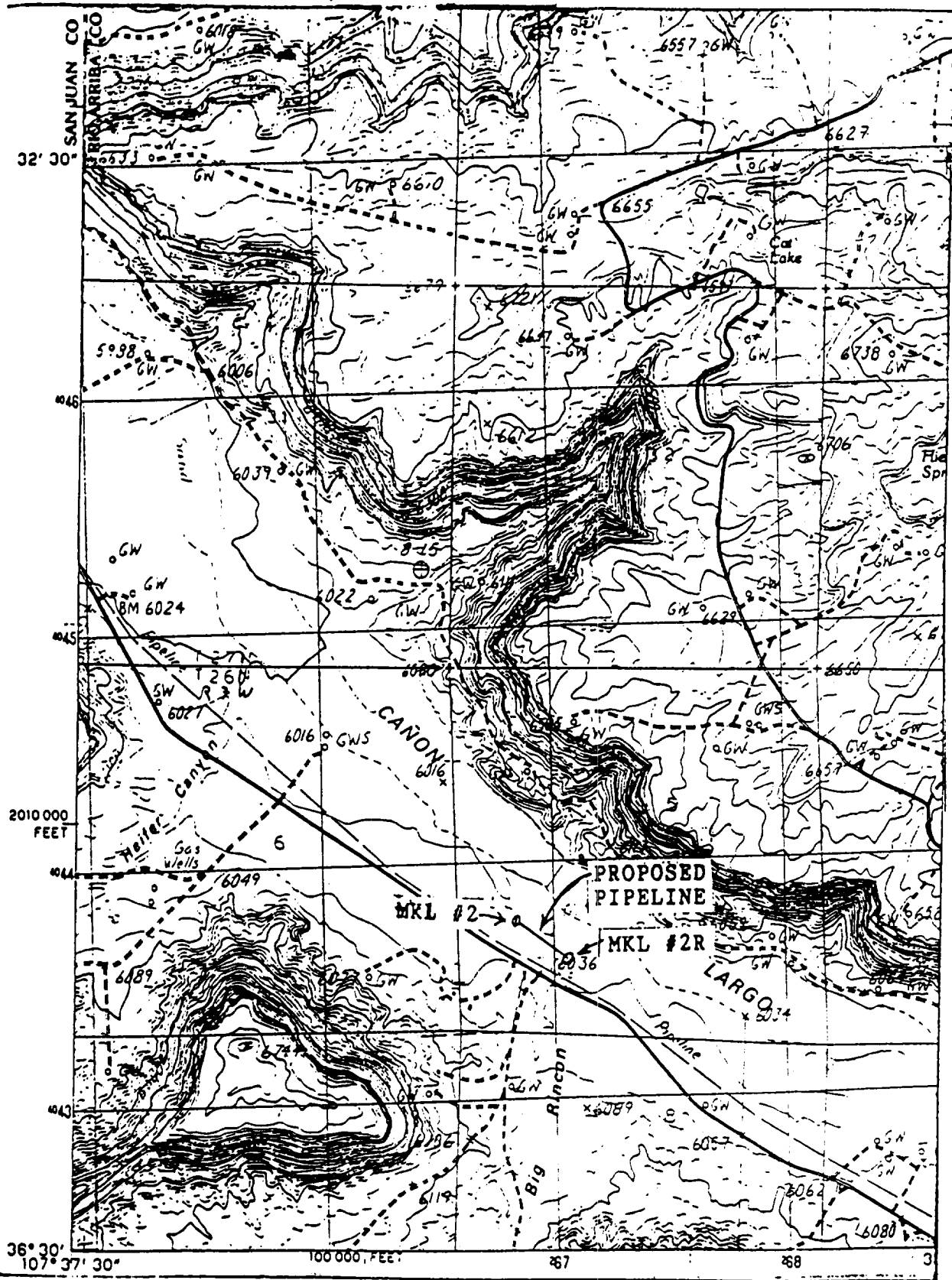
Gene Simer
Production Foreman

Enclosure

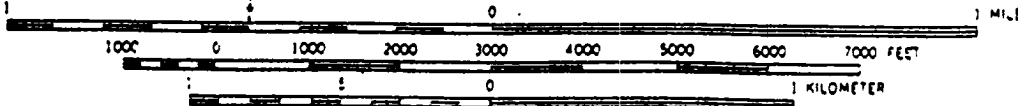
**cc: Lee Flowers
Kent Sams**

**Bureau of Land Management
Oil & Gas Division
1235 La Plata Highway
Farmington, NM 87401**

FIGURE 1



SCALE 1:24 000



GOULD PASS, NEW MEXICO

PROVISIONAL EDITION 1985

CONTOUR INTERVAL 20 FEET
DATUM IS MEAN SEA LEVEL

NEW
MEXICO

QUADRANGLE LOCATION

36107-ES-TF-034