

NEW MEXICO
OIL CONSERVATION COMMISSION

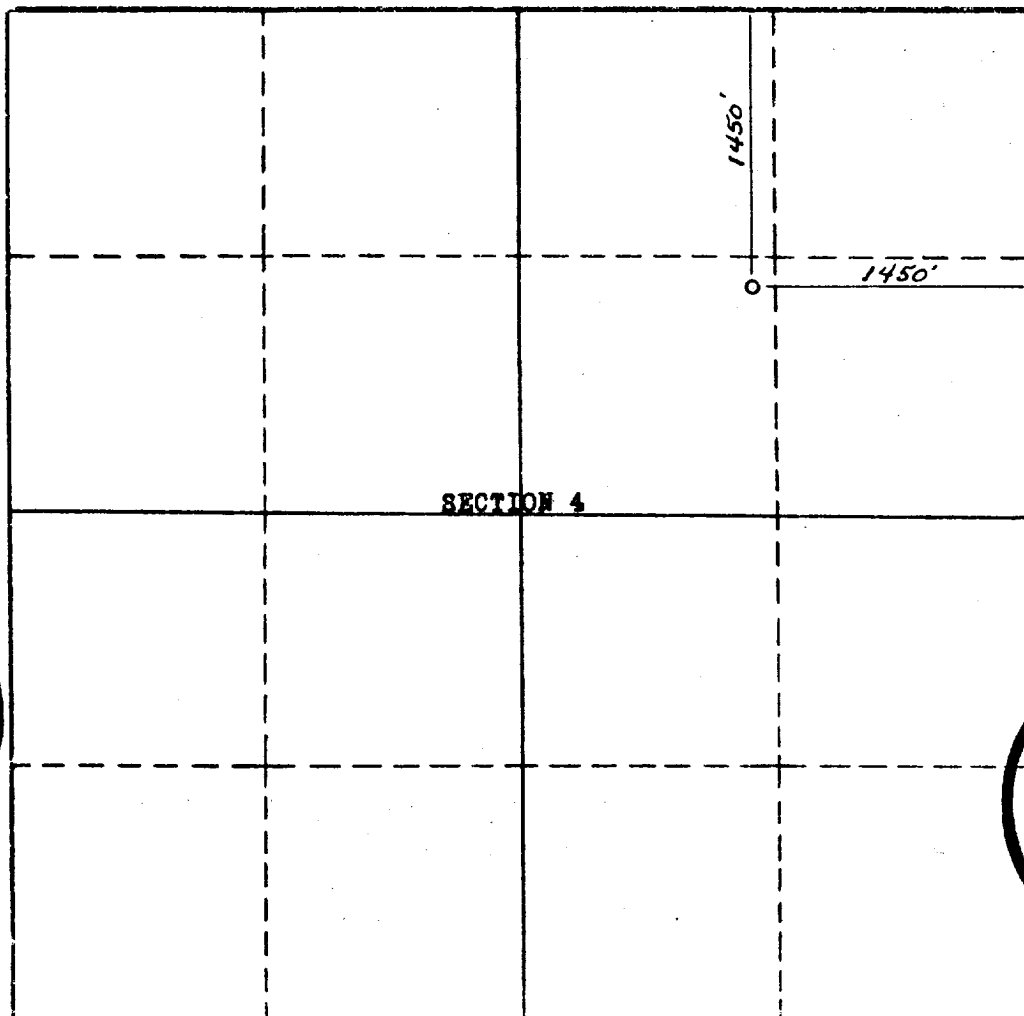
Form C-12E

Well Location and/or Gas Proration Plat

Date **June 11, 1956**

Operator **HONOLULU OIL COMPANY** Lease **Jicarilla-Apache**
Well No. **5** Section **4** Township **26N** Range **4W** NMPM
Located **1450** Feet From **North** Line, **1450** Feet From **East** Line.
Rio Arriba County, New Mexico. G. L. Elevation **7220**
Name of Producing Formation **Pictured Cliff** Pool **Tapacito** Dedicated Acreage **320**

(Note: All distances must be from outer boundaries of Section)



Scale—1 Inch Equals 1000 Feet

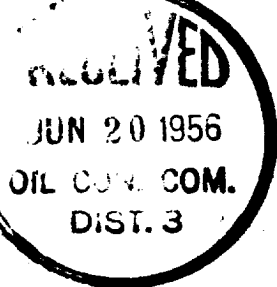
1. Is this Well a Dual Comp.? Yes ☐ No ☒
2. If the answer to Question 1 is yes, are there any other dually completed wells within the dedicated acreage? Yes ☐ No ☒

Name **George E. Hay**
Position **Division Development Engineer**
Representing **HONOLULU OIL CORPORATION**
Address **P.O. 1391, Midland, Texas**

This is to certify that the above plat was prepared from field notes of actual surveys made by me or under my supervision and that the same are true and correct to the best of my knowledge and belief.

Date Surveyed **May 19, 1956**

Stephen H. Kinney
STEPHEN H. KINNEY
Registered Professional Engineer and Land Surveyor



OIL CONSERVATION COMMISSION		
AZTEC DISTRICT OFFICE		
No. Copies Received <u>3</u>		
DISTRIBUTION		
	NO. FURNISHED	
Operator	<u>1</u>	
Santa Fe	<u>1</u>	
Proration Office		
State Land Office		
U. S. G. S.		
Transporter		
File	<u>1</u>	<input checked="" type="checkbox"/>