

NEW MEXICO OIL CONSERVATION COMMISSION

REVISED

Well Location and Acreage Dedication Plat

Section A.

Date 1-9-59

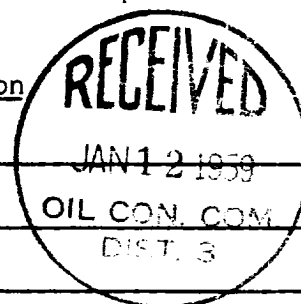
Operator Northwest Production Corp. Lease "W"
Well No. 2-5 Unit Letter B Section 5 Township 26N Range 3W NMPM
Located 990 Feet From North Line, 1650 Feet From East 3/4 Line
County Rio Arriba G. L. Elevation 6493 ungr Dedicated Acreage 319.78 Acres
Name of Producing Formation Masaverde Pool Blanco NW

1. Is the Operator the only owner* in the dedicated acreage outlined on the plat below?
Yes X No . *Corrected 6-18-64*
2. If the answer to question one is "no," have the interests of all the owners been consolidated by communitization agreement or otherwise? Yes No . If answer is "yes," Type of Consolidation
3. If the answer to question two is "no," list all the owners and their respective interests below:

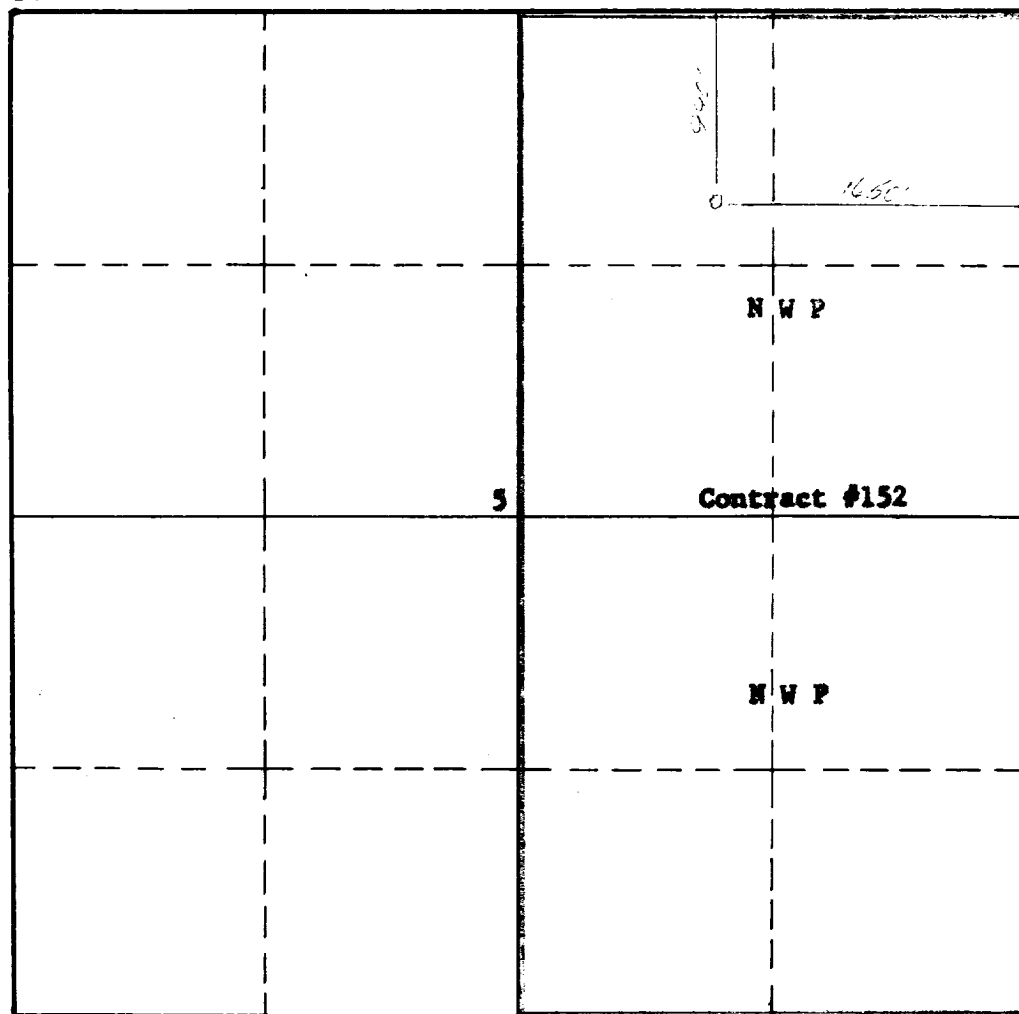
Owner

Land Description

To correct NW from the N/2 to the E/2



Section B



This is to certify that the information in Section A above is true and complete to the best of my knowledge and belief.

Northwest Production Corp.
(Operator)
M. B. Jones
Asst Mgr. Prod Opr *M. B. Jones*
(Representative)
520 Sims Bldg.
Albuquerque, N.M.
Address

This is to certify that the well location shown on the plat in Section B was plotted from field notes of actual surveys made by me or under my supervision and that the same is true and correct to the best of my knowledge and belief.

Date Surveyed July 13, 1956

/s/ Ernest V. Echobawk

Registered Professional
Engineer and/or Land Surveyor.

Certificate No.

INSTRUCTIONS FOR COMPLETION:

1. Operator shall furnish and certify to the information called for in Section A.
2. Operator shall outline the dedicated acreage for both oil and gas wells on the plat in Section B.
3. A registered professional engineer or land surveyor registered in the State of New Mexico or approved by the Commission shall show on the plat the location of the well and certify this information in the space provided.
4. All distances shown on the plat must be from the outer boundaries of Section.
5. If additional space is needed for listing owners and their respective interests as required in question 3, Section A, please use space below

OIL CONSERVATION COMMISSION		
AZTEC DISTRICT OFFICE		
No. Copies Received <u>2</u>		
DISTRIBUTION		
	NO. FINISHED	
Operator	/	
Santa Fe	/	
Production Office		
State Land Office		
U. S. G. S.		
Transporter		
File	/	✓

* "Owner" means the person who has the right to drill into and to produce from any pool and to appropriate the production either for himself or for himself and another. (65-3-29 (e) NMSA 1953 Comp.)