

UNITED STATES
DEPARTMENT OF THE INTERIOR
GEOLOGICAL SURVEY

APPLICATION FOR PERMIT TO DRILL, DEEPEN, OR PLUG BACK

1a. TYPE OF WORK

DRILL ☒DEEPEN ☐PLUG BACK ☐

b. TYPE OF WELL

OIL
WELL ☐GAS
WELL ☒

OTHER

SINGLE
ZONE ☒MULTIPLE
ZONE ☐

2. NAME OF OPERATOR

Tenneco Oil Company

3. ADDRESS OF OPERATOR

P. O. Box 1714, Durango, Colorado 81301

4. LOCATION OF WELL (Report location clearly and in accordance with any State requirements.*)

At surface

790' FNL, 1850' FEL

At proposed prod. zone

Unit B

14. DISTANCE IN MILES AND DIRECTION FROM NEAREST TOWN OR POST OFFICE*

10. DISTANCE FROM PROPOSED*

LOCATION TO NEAREST
PROPERTY OR LEASE LINE, FT.
(Also to nearest drlg. unit line, if any)

16. NO. OF ACRES IN LEASE

320

17. NO. OF ACRES ASSIGNED
TO THIS WELL

320 E/2

18. DISTANCE FROM PROPOSED LOCATION*
TO NEAREST WELL, DRILLING, COMPLETED,
OR APPLIED FOR, ON THIS LEASE, FT.

19. PROPOSED DEPTH

7600'

20. ROTARY OR CABLE TOOLS

Rotary

21. ELEVATIONS (Show whether DF, RT, GR, etc.)

6675 GR

22. APPROX. DATE WORK WILL START*

March 28, 1966

23.

PROPOSED CASING AND CEMENTING PROGRAM

SIZE OF HOLE	SIZE OF CASING	WEIGHT PER FOOT	SETTING DEPTH	QUANTITY OF CEMENT
12-1/4"	8-5/8"	20#	450'	250 sx - cement to surface
7-7/8"	4-1/2"	10.5 # & 11.6#	7600'	1st stage - 250 sx
				2nd stage - 130 sx
				3rd stage - 320 sx

We propose to rig up, drill w/rotary to approximate TD 7600'. Set casing as shown above. Run GR-Density log. Perf and frac and complete. Conduct deliverability tests. Stage collar to be set approximately 300' below bottom of Mesaverde for cementing. Run 2-3/8" tubing and install well head.

Note: Possibility of dualing this well in Mesaverde and Dakota. After running logs it will be determined whether or not to dual. If well is to be dualled in Mesaverde and Dakota, then 7600' of 5-1/2" 14# casing will be substituted for 4-1/2" casing and a dual string of 2-1/16" tubing and a packer will be installed.

IN ABOVE SPACE DESCRIBE PROPOSED PROGRAM: If proposal is to deepen or plug back, give data on present productive zone and proposed new productive zone. If proposal is to drill or deepen directionally, give pertinent data on subsurface locations and measured and true vertical depths. Give blowout preventer program, if any.

24.

Original Signed By

SIGNED HAROLD C. NICHOLS

TITLE Senior Production Clerk

DATE 3/21/66

(This space for Federal or State office use)

PERMIT NO.

APPROVAL DATE

APPROVED BY

TITLE

CONDITIONS OF APPROVAL, IF ANY:

*See Instructions On Reverse Side U. S. GEOLOGICAL SURVEY
FARMINGTON, N. M.

RECEIVED

MAR 23 1966

RECEIVED

MAR 24 1966

OIL CON. COM.
DIST. 3

Instructions

General: This form is designed for submitting proposals to perform certain well operations, as indicated, on all types of lands and leases for appropriate action by either a Federal or a State agency, or both, pursuant to applicable Federal and/or State laws and regulations. Any necessary special instructions concerning the use of this form and the number of copies to be submitted, particularly with regard to local, area, or regional procedures and practices, either are shown below or will be issued by, or may be obtained from, the local Federal and/or State office.

Item 1: If the proposal is to redrill to the same reservoir at a different subsurface location or to a new reservoir, use this form with appropriate notations. Consult applicable State or Federal regulations concerning subsequent work proposals or reports on the well.

Item 4: If there are no applicable State requirements, locations on Federal or Indian land should be described in accordance with Federal requirements. Consult local State or Federal office for specific instructions.

Item 14: Needed only when location of well cannot readily be found by road from the land or lease description. A plat, or plats, separate or on this reverse side, showing the roads to, and the surveyed location of, the well, and any other required information, should be furnished when required by Federal or State agency offices.

Items 15 and 18: If well is to be, or has been directionally drilled, give distances for subsurface location of hole in any present or objective production zone.

Item 22: Consult applicable Federal or State regulations, or appropriate officials, concerning approval of the proposal before operations are started.

NEW MEXICO OIL CONSERVATION COMMISSION
WELL LOCATION AND ACREAGE DEDICATION PLAT

Form O-1
Supersedes O-128
Effective 1-65

All distances must be from the outer boundaries of the Section.

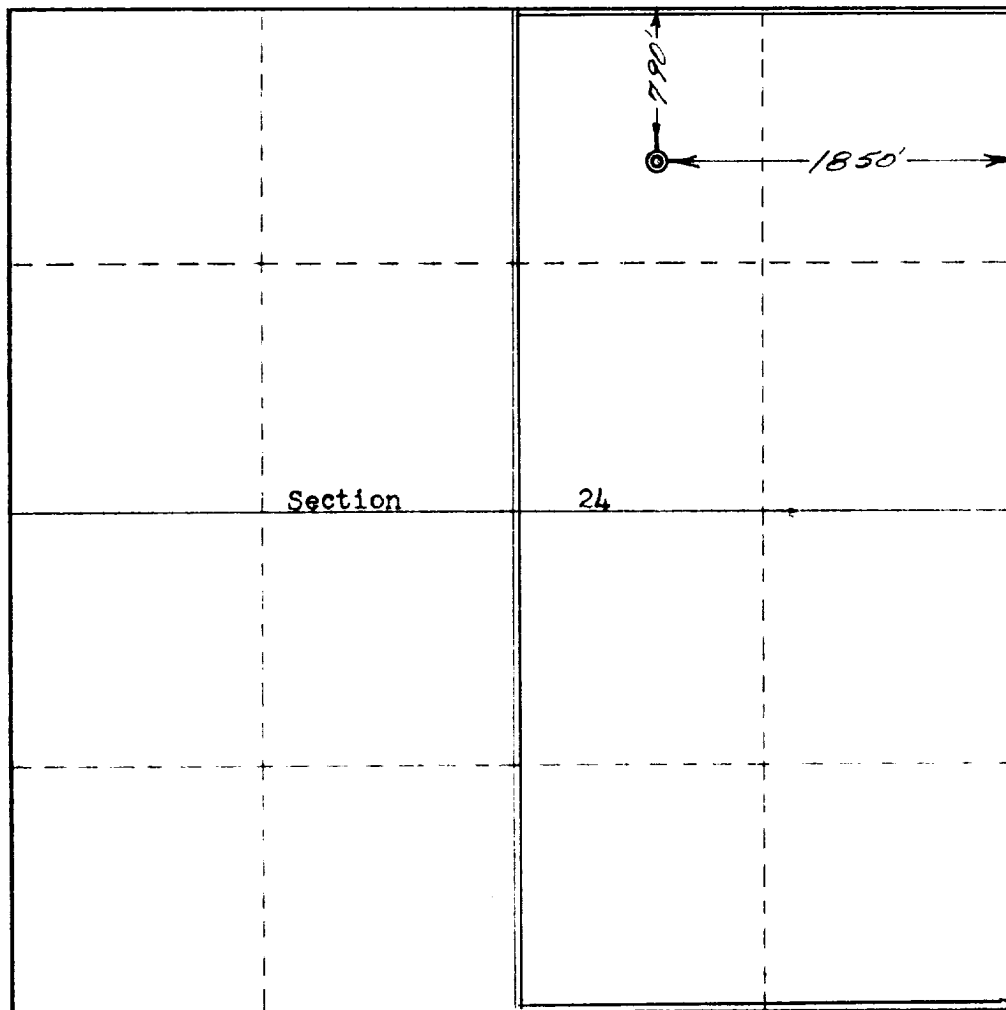
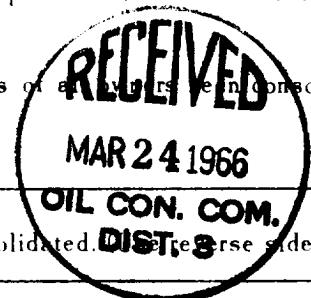
Operator TENNECO OIL COMPANY		Lease REAMES "A"		Well No. 1
Tract Letter B	Section 24	Township 26 North	Range 6 West	County Rio Arriba
Actual Footage Location of Well				
790	feet from the	North	line and	1850
				feet from the
				East
Ground Level Elev. 6675' ungraded	Producing Formation Basin Dakota		Pool Basin Dakota	Estimated Acreage 320 Acres

1. Outline the acreage dedicated to the subject well by colored pencil or hachure marks on the plat below.
2. If more than one lease is dedicated to the well, outline each and identify the ownership thereof (both as to working interest and royalty).
3. If more than one lease of different ownership is dedicated to the well, have the interests of all owners been consolidated by communitization, unitization, force-pooling, etc?

☐ Yes ☐ No If answer is "yes," type of consolidation _____

If answer is "no," list the owners and tract descriptions which have actually been consolidated. (Reverse side of this form if necessary.) _____

No allowable will be assigned to the well until all interests have been consolidated (by communitization, unitization, forced-pooling, or otherwise) or until a non-standard unit, eliminating such interests, has been approved by the Commission.



CERTIFICATION

I hereby certify that the information contained herein is true and complete to the best of my knowledge and belief.

Harold C. Nichols

Name
Harold C. Nichols
Position
Senior Production Clerk
Company
Tenneco Oil Company
Date
March 21, 1966

I hereby certify that the well location shown on this plat was plotted from field notes of actual surveys made by me or under my supervision, and that the same is true and correct to the best of my knowledge and belief.

31 August 1965

Produced in accordance with the

Robert H. Ernst
ROBERT H. ERNST
Deputy Director

N. Mex. PE & LS 2463

