

UNITED STATES  
DEPARTMENT OF THE INTERIOR  
GEOLOGICAL SURVEY

## APPLICATION FOR PERMIT TO DRILL, DEEPEN, OR PLUG BACK

## 1a. TYPE OF WORK

DRILL ☒DEEPEN ☐PLUG BACK ☐

## b. TYPE OF WELL

OIL  
WELL ☐GAS  
WELL ☒

OTHER

SINGLE  
ZONE ☒MULTIPLE  
ZONE ☐

## 2. NAME OF OPERATOR

Tenneco Oil Company

## 3. ADDRESS OF OPERATOR

P. O. Box 1714, Durango, Colorado

## 4. LOCATION OF WELL (Report location clearly and in accordance with any State requirements.)\*

At surface

1595 FSL, 900 FWL, Unit L

At proposed prod. zone

## 14. DISTANCE IN MILES AND DIRECTION FROM NEAREST TOWN OR POST OFFICE\*

## 15. DISTANCE FROM PROPOSED\*

LOCATION TO NEAREST  
PROPERTY OR LEASE LINE, FT.  
(Also to nearest drig. unit line, if any)18. DISTANCE FROM PROPOSED LOCATION\*  
TO NEAREST WELL, DRILLING, COMPLETED,  
OR APPLIED FOR, ON THIS LEASE, FT.

## 16. NO. OF ACRES IN LEASE

320

## 19. PROPOSED DEPTH

7570

17. NO. OF ACRES ASSIGNED  
TO THIS WELL

320

W/2

## 20. ROTARY OR CABLE TOOLS

Rotary

## 21. ELEVATIONS (Show whether DF, RT, GR, etc.)

6681 GR

## 22. APPROX. DATE WORK WILL START\*

July 21, 1966

## 23. PROPOSED CASING AND CEMENTING PROGRAM

SIZE OF HOLE	SIZE OF CASING	WEIGHT PER FOOT	SETTING DEPTH	QUANTITY OF CEMENT
12-1/4"	8-5/8"	24#	400	200 ex.
7-7/8"	4-1/2"	11.6# & 10.5#	7570	1st stage - 235 ex. 2nd stage - sufficient cement to circulate to surface.

We propose to rig up, drill to approximate T.D. 7570, run I.E.S. & G.R.-Density Logs, run casing as shown above with stage collar set approximately 300' below Mesaverde, WOC, perforate & frac and complete as single Dakota gas well. Conduct deliverability tests.

RECEIVED

JUL 19 1966

U. S. GEOLOGICAL SURVEY  
FARMINGTON, N. M.RECEIVED  
JUL 20 1966  
OIL CON. COM.  
DIST. 3

IN ABOVE SPACE DESCRIBE PROPOSED PROGRAM: If proposal is to deepen or plug back, give data on present productive zone and proposed new productive zone. If proposal is to drill or deepen directionally, give pertinent data on subsurface locations and measured and true vertical depths. Give blowout preventer program, if any.

## 24.

Original Signed By

HAROLD C. NICHOLS

SIGNED Harold C. NicholsTITLE Senior Production ClerkDATE July 18, 1966

(This space for Federal or State office use)

PERMIT NO. \_\_\_\_\_

APPROVAL DATE \_\_\_\_\_

APPROVED BY \_\_\_\_\_

TITLE \_\_\_\_\_

CONDITIONS OF APPROVAL, IF ANY:

**NEW MEXICO OIL CONSERVATION COMMISSION  
WELL LOCATION AND ACERAGE DEDICATION PLAT**

All distances must be from the outer boundaries of the Section

Operator <b>TENNECO OIL COMPANY</b>			Lease <b>JICARILLA "A"</b>		Well No. <b>7</b>
Unit Letter <b>L</b>	Section <b>17</b>	Township <b>26 North</b>	Range <b>5 West</b>	County <b>Rio Arriba</b>	
Actual Footage Location of Well: <b>1595'</b> feet from the <b>South</b> line and <b>900</b> feet from the <b>West</b> line Ground Level Elev. <b>6681' ungraded</b> Producing Formation <b>Basin Dakota</b> Pool <b>Basin Dakota</b> Dedicated Acreage: <b>320</b> <sup>W/2</sup> Acres					

1. Outline the acreage dedicated to the subject well by colored pencil or hatchure marks on the plat below.
2. If more than one lease is dedicated to the well, outline each and identify the ownership thereof (both as to working interest and royalty),
3. If more than one lease of different ownership is dedicated to the well, have the interests of all owners been consolidated by communitization, unitization, force-pooling, etc?

( ) Yes ( ) No If answer is "yes," type of consolidation .....

If answer is "no," list the owners and tract descriptions which have actually consolidated. (Use reverse side of this form if necessary.) .....

No allowable will be assigned to the well until all interests have been consolidated (by communitization, unitization, forced-pooling, or otherwise) or until a non standard unit, eliminating such interests, has been approved by the Commission.

**CERTIFICATION**

I hereby certify that the information contained herein is true and complete to the best of my knowledge and belief.

Original Signed By  
**HAROLD C. NICHOLS**

Name **Harold C. Nichols**

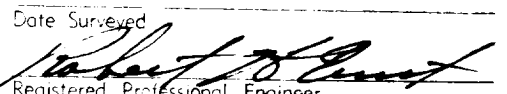
Position **Senior Production Clerk**

Company **Tenneco Oil Company**

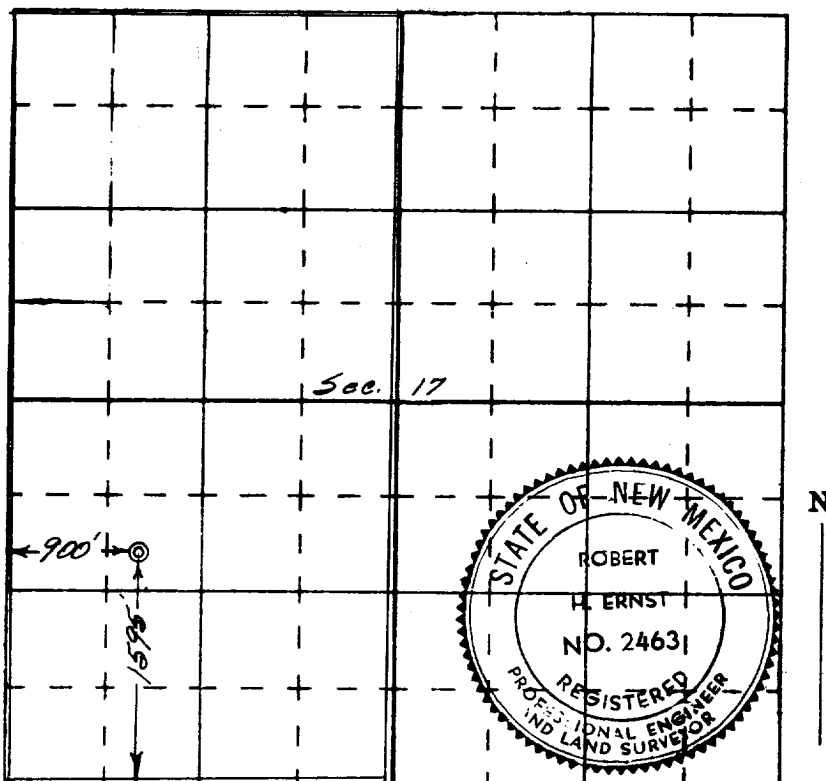
Date **July 14, 1966**

I hereby certify that the well location shown on this plat was plotted from field notes of actual surveys made by me or under my supervision, and that the same is true and correct to the best of my knowledge and belief.

**28 June 1966**

Date Surveyed  
  
 Registered Professional Engineer  
 and/or Land Surveyor  
**Robert H. Ernst**  
**N. Mex. PE & LS 2463**

Certificate No. ....



**ERNST ENGINEERING CO.  
DURANGO, COLORADO**