

UNITED STATES
DEPARTMENT OF THE INTERIOR
GEOLOGICAL SURVEY

APPLICATION FOR PERMIT TO DRILL, DEEPEN, OR PLUG BACK

1a. TYPE OF WORK

DRILL ☒DEEPEN ☐PLUG BACK ☐

b. TYPE OF WELL

OIL
WELL ☐GAS
WELL ☒

OTHER

SINGLE
ZONE ☐MULTIPLE
ZONE ☒

2. NAME OF OPERATOR

Southern Union Production Company

3. ADDRESS OF OPERATOR

P. O. Box 808, Farmington, New Mexico

4. LOCATION OF WELL (Report location clearly and in accordance with any State requirements.)*

At surface

1850 ft. from the North line and 825 ft. from the East line.

At proposed prod. zone

Same as above.

14. DISTANCE IN MILES AND DIRECTION FROM NEAREST TOWN OR POST OFFICE*

6 Miles Northwest of Ojito, New Mexico

15. DISTANCE FROM PROPOSED*

LOCATION TO NEAREST
PROPERTY OR LEASE LINE, FT.
(Also to nearest drlg. unit line, if any)

3430 ft.

16. NO. OF ACRES IN LEASE

2560 Acres

18. DISTANCE FROM PROPOSED LOCATION*

TO NEAREST WELL, DRILLING, COMPLETED,
OR APPLIED FOR, ON THIS LEASE, FT.

1590 ft.

19. PROPOSED DEPTH

8400 ft.

17. NO. OF ACRES ASSIGNED
TO THIS WELL

320 Dakota

160 Pictured

20. ROTARY OR CABLE TOOLS

Cliff

Rotary Tools.

21. ELEVATIONS (Show whether DF, RT, GR, etc.)

7225 ft. Ungraded ground level

22. APPROX. DATE WORK WILL START*

Sept. 17, 1966

23. PROPOSED CASING AND CEMENTING PROGRAM

SIZE OF HOLE	SIZE OF CASING	WEIGHT PER FOOT	SETTING DEPTH	QUANTITY OF CEMENT
15"	10-3/4"	32.75	300 ft.	300 ex.
7-7/8"	5-1/2"	17.00	8400 ft.	2400 cu. ft.

We propose to drill a well to be dually completed in the Dakota and Pictured Cliffs formation. Anticipated total depth 8400 ft.

1. Casing Program:

Surface: 10-3/4", 32.75#, H-40 set at 300 ft. Cemented w/300 ex.

Production: 5-1/2", 17.0#, J-55 set at T.D. 8400 ft. 1st stage cemented with approx. 500 cu. ft. cement; Stage Collar set under Mesaverde at approx. 6250 ft. Cemented w/500 cu. ft. cement; Stage Collar set under Pictured Cliffs at approx. 4100 ft. Cemented w/1400 cu. ft. cement.

2. Well will be mud drilled from surface to T.D. w/rotary tools.

3. Dakota and Pictured Cliff zones will be sand fraced to stimulate production.

4. Baker Model "D" 5-1/2" Production packer will be set at approx 8000 ft.

5. 11", EUE, 2.90#, JCW Tbg. will be run to Dakota formation and landed at approx. 8250' RKB.

IN ABOVE SPACE DESCRIBE PROPOSED PROGRAM: If proposal is to deepen or plug back, give data on present productive zone and proposed new productive zone. If proposal is to drill or deepen directionally, give pertinent data on subsurface locations and measured and true vertical depths. Give blowout preventer program, if any.

24. Signature signed by

GILBERT D. NOLAND, JR.

SIGNED

Gilbert D. Noland, Jr.

TITLE

Drilling Superintendent

DATE

Sept. 13, 1966

PERMIT NO.

APPROVAL DATE

APPROVED BY

TITLE

CONDITIONS OF APPROVAL, IF ANY:

*See Instructions On Reverse Side
U.S. GEOLOGICAL SURVEY
FARMINGTON, N. M.

RECEIVED

SEP 14 1966

SEP 15 1966

OIL CON. COM.
DIST. 3

Instructions

General: This form is designed for submitting proposals to perform certain well operations, as indicated, on all types of lands and leases for appropriate action by either a Federal or a State agency, or both, pursuant to applicable Federal and/or State laws and regulations. Any necessary special instructions concerning the use of this form and the number of copies to be submitted, particularly with regard to local, area, or regional procedures and practices, either are shown below or will be issued by, or may be obtained from, the local Federal and/or State office.

Item 1: If the proposal is to redrill to the same reservoir at a different subsurface location or to a new reservoir, use this form with appropriate notations. Consult applicable State or Federal regulations concerning subsequent work proposals or reports on the well.

Item 4: If there are no applicable State requirements, locations on Federal or Indian land should be described in accordance with Federal requirements. Consult local State or Federal office for specific instructions.

Item 14: Needed only when location of well cannot readily be found by road from the land or lease description. A plat, or plats, separate or on this reverse side, showing the roads to, and the surveyed location of, the well, and any other required information, should be furnished when required by Federal or State agency offices.

Items 15 and 18: If well is to be, or has been directionally drilled, give distances for subsurface location of hole in any present or objective production zone.

Item 22: Consult applicable Federal or State regulations, or appropriate officials, concerning approval of the proposal before operations are started.

NEW MEXICO OIL CONSERVATION COMMISSION

WELL LOCATION AND ACERAGE DEDICATION PLAT

All distances must be from the outer boundaries of the Section

Operator SOUTHERN UNION PRODUCTION COMPANY			Lease JICARILLA "D"		Well No. 10
Unit Letter H	Section 31	Township 26 NORTH	Range 3 WEST	County RIO ARriba	

Actual Footage Location of Well:
1850 feet from the **NORTH** line and **825** feet from the **EAST** line

Ground Level Elev. 7225.0	Producing Formation Dakota	Pool Basin Dakota	Dedicated Acreage: 300	Acres
	Pictured Cliffs	Basin Pictured Cliffs	100	

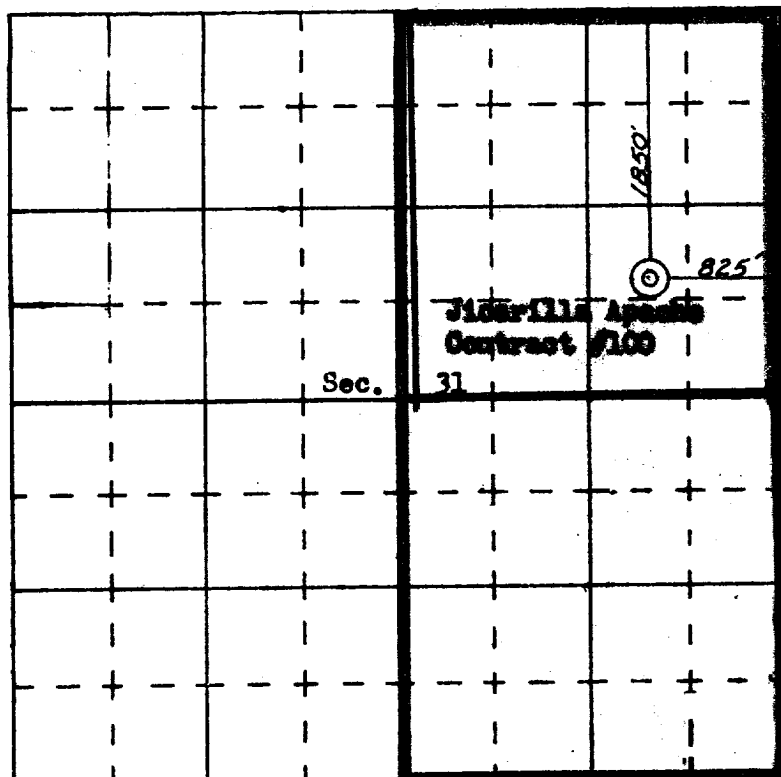
1. Outline the acreage dedicated to the subject well by colored pencil or hachure marks on the plat below.
2. If more than one lease is dedicated to the well, outline each and identify the ownership thereof (both as to working interest and royalty),
3. If more than one lease of different ownership is dedicated to the well, have the interests of all owners been consolidated by communitization, unitization, force-pooling, etc?

(☒) Yes () No If answer is "yes," type of consolidation **Communitization**

If answer is "no," list the owners and tract descriptions which have actually consolidated. (Use reverse side of this form if necessary.)

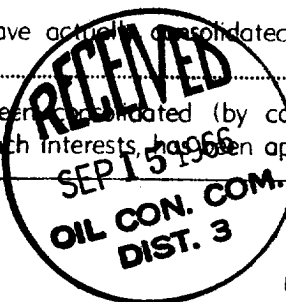
No allowable will be assigned to the well until all interests have been consolidated (by communitization, unitization, forced-pooling, or otherwise) or until a non standard unit, eliminating such interests, has been approved by the Commission.

—— **Dakota Dedicated Acreage**
 —— **Pictured Cliffs Dedicated Acreage**



SCALE—4 INCHES EQUALS 1 MILE

SAN JUAN ENGINEERING COMPANY, FARMINGTON, N. M.



CERTIFICATION

I hereby certify that the information contained herein is true and complete to the best of my knowledge and belief.

Original signed by
GILBERT D. NOLAND, JR.

Name

Gilbert D. Noland, Jr.

Position

Drilling Superintendent

Company

Southern Union Production Co.

Date

September 13, 1966

I hereby certify that the well location shown on this plat was plotted from field notes of actual surveys made by me or under my supervision, and that the same is true and correct to the best of my knowledge and belief.

Date **September 13, 1966**

Date

Revised

and/or

Certificate No.

