

UNITED STATES
DEPARTMENT OF THE INTERIOR
GEOLOGICAL SURVEY

APPLICATION FOR PERMIT TO DRILL, DEEPEN, OR PLUG BACK

1a. TYPE OF WORK

DRILL ☐DEEPEN ☐PLUG BACK ☐

b. TYPE OF WELL

OIL
WELL ☐GAS
WELL ☒

OTHER

SINGLE
ZONE ☒MULTIPLE
ZONE ☐

2. NAME OF OPERATOR

Marathon Oil Company

3. ADDRESS OF OPERATOR

P.O. Box 97, Mc Fadden, Wyoming 82080

4. LOCATION OF WELL (Report location clearly and in accordance with any State requirements.*)

At surface

1040ft FSL, 800ft FWL, Sec. 28, T26N, R5W, N.M. P.M.

At proposed prod. zone

14. DISTANCE IN MILES AND DIRECTION FROM NEAREST TOWN OR POST OFFICE*

15. DISTANCE FROM PROPOSED*

LOCATION TO NEAREST
PROPERTY OR LEASE LINE, FT.
(Also to nearest drlg. unit line, if any)

16. NO. OF ACRES IN LEASE

2560

17. NO. OF ACRES ASSIGNED
TO THIS WELL

320

18. DISTANCE FROM PROPOSED LOCATION*
TO NEAREST WELL, DRILLING, COMPLETED,
OR APPLIED FOR, ON THIS LEASE, FT.

19. PROPOSED DEPTH

7600ft

20. ROTARY OR CABLE TOOLS

Rotary

21. ELEVATIONS (Show whether DF, RT, GR, etc.)

6465ft Ground level

22. APPROX. DATE WORK WILL START*

January 2, 1967

23.

PROPOSED CASING AND CEMENTING PROGRAM

SIZE OF HOLE	SIZE OF CASING	WEIGHT PER FOOT	SETTING DEPTH	QUANTITY OF CEMENT
12 1/4"	8 5/8"OD	24# J55	400ft	300 sacks
7 7/8"	4 1/2 "OD	11.6# J55	7600ft	1900 sacks

Marathon Oil Company requests permission to drill a development well to the Basin Dakota Sand at the above location. A string of 8 5/8"OD, 24#, J55 surface casing will be set in a 12 1/4"hole at approximately 400ft and cemented to surface. A string of 4 1/2" OD, 11.6#, J55 production casing will be set through the Dakota sand in a 7 7/8"hole and cemented in three stages with 1900 sacks. A low solids, low water loss, chemical jel mud will be used to drill the well. Our logging program will consist of a Formation-Density-Gamma Ray log. Indicated productive intervals in the Basin Dakota Sand will be perforated two holes per foot with jets. Stimulation will consist of sand-water fracture treatment with approximately 3500 pounds of sand per foot of perforations.

Our blow-out preventer program includes Cameron Double Hydraulic and Hydril Series 900 with closing accumulator, blind rams, and rams to fit the drill pipe.

IN ABOVE SPACE DESCRIBE PROPOSED PROGRAM: If proposal is to deepen or plug back, give data on present productive zone and proposed new productive zone. If proposal is to drill or deepen directionally, give pertinent data on subsurface locations and measured and true vertical depths. Give blowout preventer program, if any.

24.

SIGNED

TITLE Area Superintendent

U. S. GEOLOGICAL SURVEY
FARMINGTON, N. M.

DATE Dec 23 1966

(This space for Federal or State office use)

PERMIT NO.

APPROVAL DATE

APPROVED BY

TITLE

DATE

CONDITIONS OF APPROVAL, IF ANY:

*See Instructions On Reverse Side

5. LEASE DESIGNATION AND SERIAL NO.

Tract 251-Contract 00154

6. IF INDIAN, ALLOTTEE OR TRIBE NAME

Jicarilla Apache

7. UNIT AGREEMENT NAME

8. FARM OR LEASE NAME

Jicarilla Apache

9. WELL NO.

11

10. FIELD AND POOL, OR WILDCAT

Jicarilla-Basin Dakota

11. SEC., T., R., M., OR BLK.
AND SURVEY OR AREA

Section 28, T26N, R5W

12. COUNTY OR PARISH

13. STATE

Rio Arriba

New Mexico

Instructions

General: This form is designed for submitting proposals to perform certain well operations, as indicated, on all types of lands and leases for appropriate action by either a Federal or a State agency, or both, pursuant to applicable Federal and/or State laws and regulations. Any necessary special instructions concerning the use of this form and the number of copies to be submitted, particularly with regard to local, area, or regional procedures and practices, either are shown below or will be issued by, or may be obtained from, the local Federal and/or State office.

Item 1: If the proposal is to redrill to the same reservoir at a different subsurface location or to a new reservoir, use this form with appropriate notations. Consult applicable State or Federal regulations concerning subsequent work proposals or reports on the well.

Item 4: If there are no applicable State requirements, locations on Federal or Indian land should be described in accordance with Federal requirements. Consult local State or Federal office for specific instructions.

Item 14: Needed only when location of well cannot readily be found by road from the land or lease description. A plat, or plats, separate or on this reverse side, showing the roads to, and the surveyed location of, the well, and any other required information, should be furnished when required by Federal or State agency offices.

Items 15 and 18: If well is to be, or has been directionally drilled, give distances for subsurface location of hole in any present or objective production zone.

Item 22: Consult applicable Federal or State regulations, or appropriate officials, concerning approval of the proposal before operations are started.

**NEW MEXICO OIL CONSERVATION COMMISSION
WELL LOCATION AND ACERAGE DEDICATION PLAT**

All distances must be from the outer boundaries of the Section

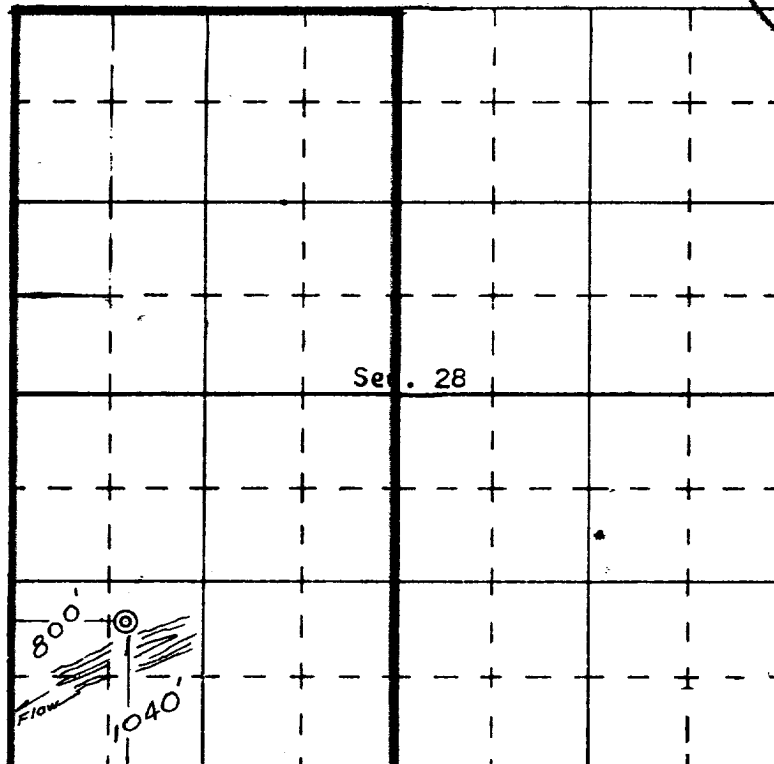
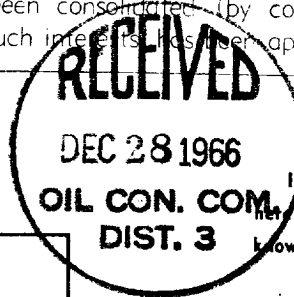
Operator MARATHON OIL COMPANY			Lease JICARILLA APACHE		Well No. 11
Unit Letter M	Section 28	Township 26 North	Range 5 West	County Rio Arriba	
Actual Footage Location of Well: 1040 feet from the South line and 800 feet from the West line					
Ground Level Elev. 6465	Producing Formation Dakota		Pool Basin Dakota	Dedicated Acreage: 320 Acres	

1. Outline the acreage dedicated to the subject well by colored pencil or hachure marks on the plat below.
2. If more than one lease is dedicated to the well, outline each and identify the ownership thereof (both as to working interest and royalty),
3. If more than one lease of different ownership is dedicated to the well, have the interests of all owners been consolidated by communitization, unitization, force-pooling, etc?

() Yes (X) No If answer is "yes," type of consolidation

If answer is "no," list the owners and tract descriptions which have actually consolidated. (Use reverse side of this form if necessary.) Marathon Oil Company - Tract 251

No allowable will be assigned to the well until all interests have been consolidated (by communitization, unitization, forced-pooling, or otherwise) or until a non standard unit, eliminating such interests, has been approved by the Commission.



CERTIFICATION

I hereby certify that the information contained herein is true and complete to the best of my knowledge and belief.

Name Justin Brown
 Position Area Superintendent
 Company Marathon Oil Company
 Date December 21, 1966

I hereby certify that the well location shown on this plat was plotted from field notes of actual surveys made by me or under my supervision, and that the same is true and correct to the best of my knowledge and belief.

Date Surveyed December 15, 1966
 Registered Professional Engineer
 and/or Land Surveyor

E. J. Coatsworth
 Certificate No. 3602