

UNITED STATES
DEPARTMENT OF THE INTERIOR
BUREAU OF LAND MANAGEMENT

RECEIVED
BLM

FORM APPROVED
Budget Bureau No. 1004-0135
Expires: March 31, 1993

SUNDRY NOTICES AND REPORTS ON WELL

Do not use this form for proposals to drill or to deepen or reentry to a different reservoir.
Use "APPLICATION FOR PERMIT—" for such proposals.

APR 12 PM 12:29
ALBUQUERQUE, N.M.

SUBMIT IN TRIPLICATE

1. Type of Well

☐ Oil Well ☒ Gas Well ☐ Other

2. Name of Operator

CONOCO INC
CONOCO INC.

3. Address and Telephone No.

10 DESTA DR. STE. 100W, MIDLAND, TX. 79705-4500 (915) 686-5424

4. Location of Well (Footage, Sec., T. R. M. or Survey Description)

Section 29, T-26-N, R-4-W, L
1620' FSL & 800' FWL

5. Lease Designation and Serial No.

Cont 12 0

6. If Indian, Allottee or Tribe Name

Jicarilla

7. If Unit or CA, Agreement Designation

8. Well Name and No.

Jicarilla #6

9. API Well No.

30-039-20126

10. Field and Pool, or Exploratory Area

Lindrith Gallup-Dakota, West

11. County or Parish, State

Rio Arriba, NM

1a CHECK APPROPRIATE BOX(s) TO INDICATE NATURE OF NOTICE, REPORT, OR OTHER DATA

TYPE OF SUBMISSION

- ☒ Notice of Intent
☐ Subsequent Repon
☐ Final Abandonment Notice

TYPE OF ACTION

- ☒ Abandonment
☐ Recompletion
☐ Plugging Back
☐ Casing Repair
☐ Altering Casing
☐ Other

- ☐ Change of Plans
☐ New Construction
☐ Non-Routine Fracuring
☐ Water Shut-Off
☐ Conversion to Injection
☐ Dispose Water

(Note: Repon results of multiple completion (Well Completion or Recompletion Report and Log form.)

13. Describe Proposed or Completed Operations (Clearly state all pertinent details, and give pertinent dates, including estimated date of starting any proposed work. If well is directionally drilled, give subsurface locations and measured and true vertical depths for all markers and zones pertinent to this work.)*

Conoco, Inc. proposes to plug and abandon this well using the attached procedure.

RECEIVED
MAY 11 1999

OIL CON. DIV.
DIST. 3

14. I hereby certify that the foregoing is true and correct

Signed

Kay Maddox

Title

Kay Maddox

Regulatory Agent

Date

April 8, 1999

(This space for Federal or State official use)

Approved by

David R. Ste...

Title

Land and Mineral Resources

Date

MAY 7 1999

Conditions of approval if any:

BLM(6), NMOC(1), SHEAR, PONCA, COST ASST, FILE ROOM

Title 18 U.S.C. Section 1001, makes it a crime for any person knowingly and willfully to make to any department or agency of the United States any false, fictitious or fraudulent statements or representations as to any matter within its jurisdiction.

*See Instruction on Reverse Side

PLUG AND ABANDONMENT PROCEDURE

4-1-99

Jicarilla #6**Basin Dakota**

1620' FSL & 800' FWL, Section 29, T26N, R4W
Rio Arriba County, New Mexico

Note: All cement volumes use 100% excess outside pipe and 50' excess inside pipe. The stabilizing wellbore fluid will be 8.3 ppg, sufficient to balance all exposed formation pressures.

1. Install and test rig anchors. Prepare blow pit. Comply with all NMOCD, BLM and Conoco safety rules and regulations. MOL and RU daylight pulling unit. Conduct safety meeting for all personnel on location. Blow well down; kill with water as necessary. ND wellhead and NU BOP and stripping head; test BOP.
2. PU on tubing and release packer at 7480'. TOH with tubing and LD packer. If unable to release packer then determine free point and jet cut tubing. If necessary LD tubing and PU workstring.
3. **Plug #1 (Dakota perforations and top, 7500' - 7400')**: RIH with 4-1/2" wireline CIBP and set at 7500'. TIH with open ended tubing and tag CIBP. Load casing with water and pressure test to 500#. If casing does not test, spot or tag subsequent plug as appropriate. Spot 12 sxs Class B cement inside casing above CIBP to isolate Dakota perforations and cover top. PUH to 6210'.
4. **Plug #2 (Gallup top, 6210' - 6110')**: Mix 12 sxs Class B cement and spot balanced plug inside casing to cover Gallup top. PUH to 5057'.
5. **Plug #3 (Mesaverde top, 5057' - 4957')**: Mix 12 sxs Class B cement and spot balanced plug inside casing to cover Mesaverde top. PUH to 3368'.
6. **Plug #4 (Pictured Cliffs, Fruitland, Kirtland and Ojo Alamo tops, 3368' - 2765')**: Mix 50 sxs Class B cement and spot balanced plug inside casing to cover Ojo Alamo top. TOH with tubing.
7. **Plug #5 (Nacimiento top, 1085' - 985')**: Perforate 3 HCS squeeze holes at 1085'. If casing tested, then attempt to pump into squeeze holes. Set 4-1/2" cement retainer at 1035'. Mix 51 sxs Class B cement, squeeze 39 sxs outside casing and leave 12 sxs inside casing to cover Nacimiento top. TOH and LD tubing.
8. **Plug #6 (8-5/8" Surface casing at 235')**: Perforate 3 squeeze holes at 285'. Establish circulation out bradenhead valve. Mix and pump approximately 100 sxs Class B cement down the 4-1/2" casing from 285' to surface, circulate good cement out bradenhead valve. Shut well in and WOC.
9. ND BOP and cut off well head below surface casing flange. Install P&A marker with cement to comply with regulations. RD, MOL and cut off anchors. Restore location per BLM stipulations

Jicarilla #6**Current****Basin Dakota****SW, Section 29, T-26-N, R-4-W, Rio Arriba County, NM**

Today's Date: 3/31/99

Spud: 8/3/88

Comp: 10/18/88

Elevation: 8784'

12-1/4" Hole

8-5/8" 24#, J-55 Csg set @ 235'
175 sxs cement (Circulated to Surface)**Workover History**Oct '84: Casing Repair: found hole at
or near DV tool from 3324' to 3356';
sqz with 150 sxs cement; landed tubing
at 7675' with Model R packer at 7480'Top of Cmt unknown, lost circulation
during job for 50 bbls, then regained.1-1/4" Tubing set at 7675'
Model R Packer @ 7480'

Nacimiento @ 1035'

Ojo Alamo @ 2815'

Kirtland @ 2980'

Fruitland @ 3080'

Pictured Cliffs @ 3318'

Sqz DV tool leak from 3324' to 3356'
with 150 sxs cement (Oct '84)DV tool @ 3400'
Cmt w/ 250 sxs (1000 cf)Top of Cmt @ DV tool (by Calc, 75%)
(Only 20% returns noted)

Mesaverde @ 5007'

DV tool @ 5884'
Cmt w/ 175 sxs (700 cf)

Top of Cmt @ 5830' (by Calc, 75%)

Gallup @ 7080'

Dakota Perforations:
7528' - 7688'

Dakota @ 7835'

PBTD 7700'

4-1/2" 10.5/11.6.#, J-55 Casing Set @ 7744'
Cemented with 350 sxs (582 cf)
(No returns, noted lost circ problems in MV)

7-7/8" Hole

TD 7745'

Jicarilla #6**Proposed P&A**

Basin Dakota

SW, Section 29, T-26-N, R-4-W, Rio Arriba County, NM

Today's Date: 3/31/99

Spud: 8/3/68

Comp: 10/16/68

Elevation: 6784'

12-1/4" Hole

Nacimiento @ 1035'

Ojo Alamo @ 2815'

Kirtland @ 2990'

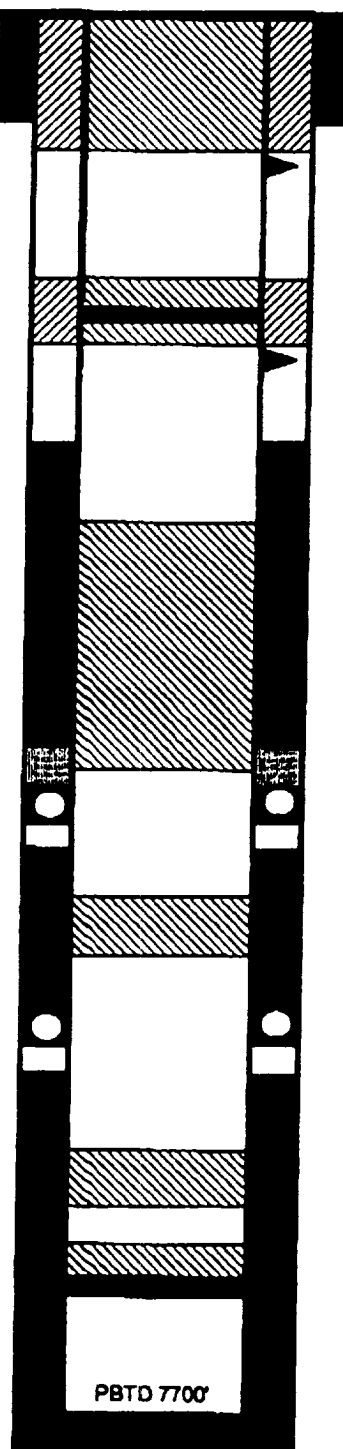
Fruitland @ 3080'

Pictured Cliffs @ 3318'

Mesaverde @ 5007'

Gallup @ 6160'

Dakota @ 7635'



7-7/8" Hole

TD 7745'

8-5/8" 24#, J-55 Casing set @ 235'
175 sxs cement (Circulated to Surface)Perforate @ 285' Plug #6 285' - Surface
Cmt with 100 sxs Class BCement Rt @ 1035' Plug #5 1085' - 985'
Cmt with 51 sxs Class B,
39 sxs outside casing
and 12 sxs inside.Perforate @ 1085'
Top of Cmt unknown, lost circulation
during job for 50 bbls, then regained.Plug #4 3388' - 2765'
Cmt with 50 sxs Class BSqr DV tool leak from 3324' to 3356'
with 150 sxs cement (Oct '84)DV tool @ 3400'
Cmt w/ 250 sxs (1000 cf)Top of Cmt @ DV tool (by Calc, 75%)
(Only 20% returns noted)Plug #3 5057' - 4957'
Cmt with 12 sxs Class BDV tool @ 5684'
Cmt w/ 175 sxs (700 cf)

Top of Cmt @ 5830' (by Calc, 75%)

Plug #2 6210' - 6110'
Cmt with 12 sxs Class BSet CIBP @ 7500' Plug #1 7500' - 7400'
Cmt with 12 sxs Class BDakota Perforations:
7526' - 7689'4-1/2" 10.5/11.6#, J-55 Casing Set @ 7744'
Cemented with 350 sxs (582 cf)
(No returns, noted lost cir problems in MV)

CONDITIONS OF APPROVAL FOR PERMANENT ABANDONMENT

Operator Conoco Inc. Well Name Jic 120 #6

1. Plugging operations authorized are subject to the "General Requirements for Permanent Abandonment of Wells on Federal Leases."
2. For wells on Federal leases, Al Yepa with the Cuba Field Office is to be notified at least 24 hours (48 hours if possible) before the plugging operations commence. His phone number is (505) 289-3748. Office hours are 7:45 a.m. to 4:30 p.m.

For wells on Jicarilla leases notify Erwin Elote with the Jicarilla Apache Tribe at least 24 hours (48 hours if possible) before the plugging operations commence. His phone number is (505) 759-3242.

3. Blowout prevention equipment is required.
4. The following modifications to your plugging program are to be made : none