



STATE OF NEW MEXICO  
ENERGY, MINERALS AND NATURAL RESOURCES DEPARTMENT  
OIL CONSERVATION DIVISION



BRUCE KING  
GOVERNOR

ANITA LOCKWOOD  
CABINET SECRETARY

2040 S. PACHECO  
SANTA FE, NEW MEXICO 87505  
(505) 827-7131

**ADMINISTRATIVE ORDER DHC-1049**

Meridian Oil Inc.  
P. O. Box 4289  
Farmington, New Mexico 87499-4289

Attention: Thomas E. Mullins

*Jicarilla "G" No. 6  
Unit L, Section 2, Township 26 North, Range 5 West, NMPM,  
Rio Arriba County, New Mexico.  
Blanco-Mesaverde, Basin-Dakota and BS Mesa Gallup Pools*

**RECEIVED**  
NOV - 9 1994  
**OIL CON. DIV.**  
DIST. 3

Dear Mr. Mullins:

Reference is made to your recent application for an exception to Rule 303-A of the Division Rules and Regulations to permit the subject well to commingle production from all three pools in the wellbore.

It appearing that the subject well qualifies for approval for such exception pursuant to the provisions of Rule 303-C, and that reservoir damage or waste will not result from such downhole commingling, and correlative rights will not be violated thereby, you are hereby authorized to commingle the production as described above and any Division Order which authorized the dual completion and required separation of the zones is hereby placed in abeyance.

In accordance with the provisions of Rule 303-C-4., total commingled oil production from the subject well shall not exceed 50 barrels per day, and total water production shall not exceed 100 barrels per day. The maximum amount of gas which may be produced daily from the well shall be determined by Division Rules and Regulations or by the gas allowable for each respective prorated pool as printed in the Division's San Juan Basin Gas Proration Schedule.

In accordance with the provisions of Rule 303-C, the supervisor of the Aztec District Office of the Oil Conservation Division shall determine the proper allocation of production from the subject well following its completion.

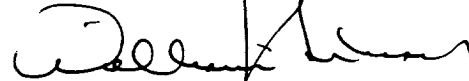
Pursuant to Rule 303-C-5, the commingling authority granted by the order may be rescinded by the Division Director if, in his opinion, conservation is not being best served by such commingling.

*Administrative Order DHC-1049*  
*Meridian Oil Inc.*  
*November 3, 1994*  
*Page 2*

---

Approved at Santa Fe, New Mexico on this 3rd day of November, 1994.

STATE OF NEW MEXICO  
OIL CONSERVATION DIVISION



WILLIAM J. LEMAY  
Director

S E A L

WJL/DC/kv

cc: Oil Conservation Division - Aztec  
Bureau of Land Management - Farmington

# MERIDIAN OIL

September 8, 1994

New Mexico Oil Conservation Division  
Attn.: Mr. Bill Lemay  
P.O. Box 2088  
310 Old Santa Fe Trail  
Santa Fe, NM 87501

RECEIVED  
SEP 13 1994  
OIL CON. DIV.  
DIST. 3

RE: **Jicarilla G # 6**  
Unit L, Section 02, T26N, R05W  
Rio Arriba County, New Mexico  
Downhole Commingling Request

Dear Mr. Lemay:

Meridian Oil Inc. is applying for an administrative downhole commingling order (3 zones) for the referenced well in the Blanco Mesaverde, B. S. Mesa Gallup, and Basin Dakota fields. The ownership of the zones to be commingled is common. The Bureau of Land Management and offset operators will receive notification of this downhole commingling.

The subject well was drilled and dual completed in the Mesaverde (Cliffhouse only) and Dakota formations in 1969 with production up two separate 1-1/2" tubing strings. The Gallup zone is prospective in the subject well and several successful completions are evident in the surrounding offset wellbores. In addition to the Gallup potential, the Point Lookout and Meneffee intervals of the Mesaverde group have not been completed in the wellbore.

The Jicarilla G # 6 Mesaverde has produced 1,580 MMCF and 0.2 MBO while the Dakota has produced 1,170 MMCF and 8.0 MBO to date. Current production from Mesaverde is 100 MCFD & 0 BOPD, while the Dakota produces 90 MCFD & 0.5 BOPD. With administrative approval allowing completion of the additional Gallup zone in the referenced well, all three (3) formations can be more efficiently produced up a single 2-3/8" tubing string; an initial increase of 350 MCFD is anticipated. Downhole commingle will allow for more efficient liquid removal from the wellbore thereby increasing the ultimate hydrocarbon reserve recovery from each formation.

The reservoir characteristics of the subject zones are such that underground waste will not be caused by the proposed commingling. The fluids in these reservoirs are compatible and no precipitates will be formed to cause damage to any reservoir. Commingle of these three (3) zones has been authorized and successfully completed in the Jicarilla G # 9 (NE/4, Section 01, T26N, R05W, Order # R-DHC-8321) and Jicarilla G # 8 (NE/4, Section 02, T26N, R05W, Order # R-DHC-959).

The latest Jicarilla G # 6 21-day shut-in bottom hole pressures for the respective zones are 455 psi for the Mesaverde at 5100' and 1,060 psi for the Dakota at 7500' taken August 22, 1994. Correcting these pressures to a common datum confirm that current zone pressures are within 50% of the highest pressure zone. The Gallup formation is anticipated to have a reservoir pressure of 1,350 psi +/- while the additional Mesaverde intervals are anticipated to have a reservoir pressure of 1,200 psi +/- . The Mesaverde, Gallup, and Dakota bottom-hole pressures all range from 1,000 psi to 1,350 psi.

New Mexico Oil Conservation Division  
Mr. Bill Lemay  
Jicarilla G # 6 - Downhole Commingling Request  
09/08/94

The Gallup production in offsets is quite erratic, therefore it is requested that a minimum of three (3) months actual sales line production combined with pressure and production data gathered during workover operations be utilized in developing the allocation formula for the Jicarilla G # 6. The twenty-five (25) years of production data from the Dakota and Mesaverde will also be utilized in finalizing the allocation formula. Meridian Oil will consult with the district supervisor of the Aztec NMOCD office for approval of this allocation.

Approval of this commingling application will allow for the prevention of wasted resources and protection of correlative rights. Included with this letter are plats showing ownership of offsetting leases for the Mesaverde, Gallup, and Dakota, a copies of letters to the BLM and offset operators, Jicarilla G # 6 production curves, a wellbore diagram, a pertinent data sheet, and the proposed workover procedure. I appreciate your consideration of this proposal. I can be reached by phone at (505) 326-9546 to answer any concerns.

Sincerely,



Thomas E. Mullins  
Production Engineer

TEM  
attachments

cc: Frank Chavez - Oil Conservation Division, Aztec District  
Shirley Mondy - Bureau of Land Management, Rio Puerco District  
Peggy Bradfield- Regulatory  
Well File

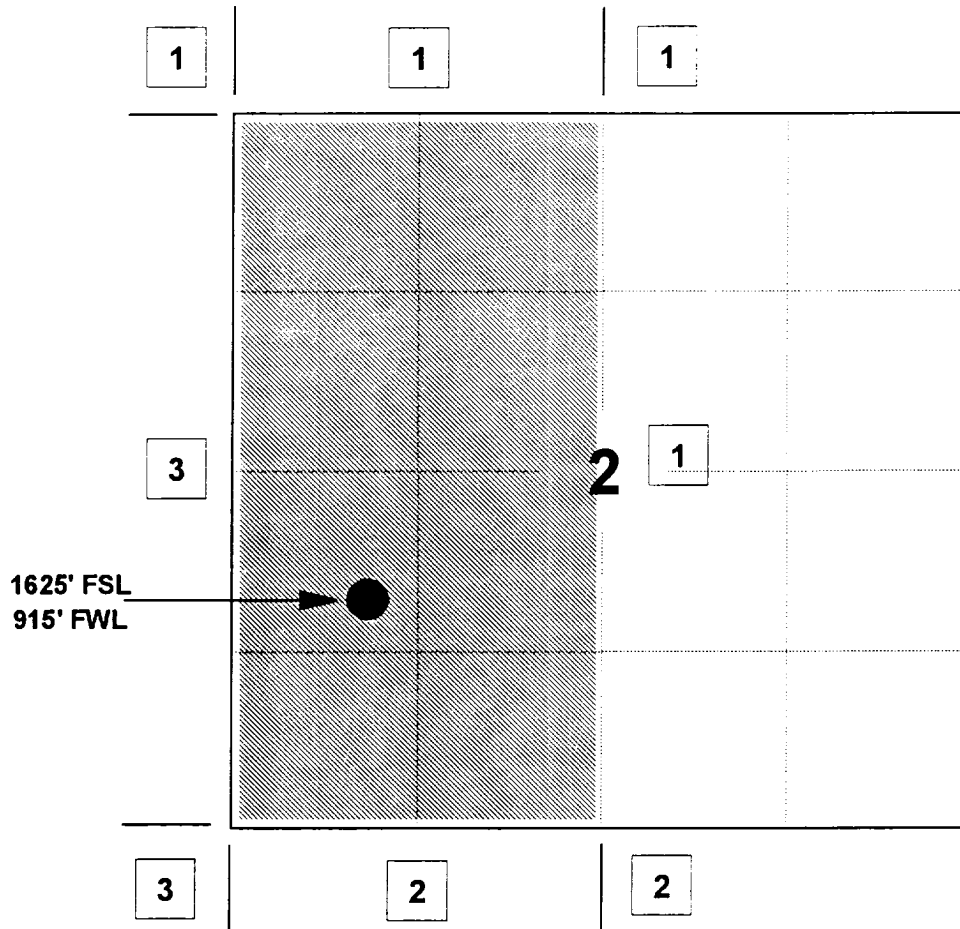
# MERIDIAN OIL INC

## JICARILLA G #6

OFFSET OPERATOR \ OWNER PLAT

Dakota / Mesaverde / Gallup Commingle Well

Township 26 North, Range 5 West



1) Meridian Oil Inc

2) Southland Royalty Company & Meridian Oil Inc

3) Conoco, Inc. 10 Desta Drive, Suite 100W, Midland, TX 79705

Mesaverde Formation

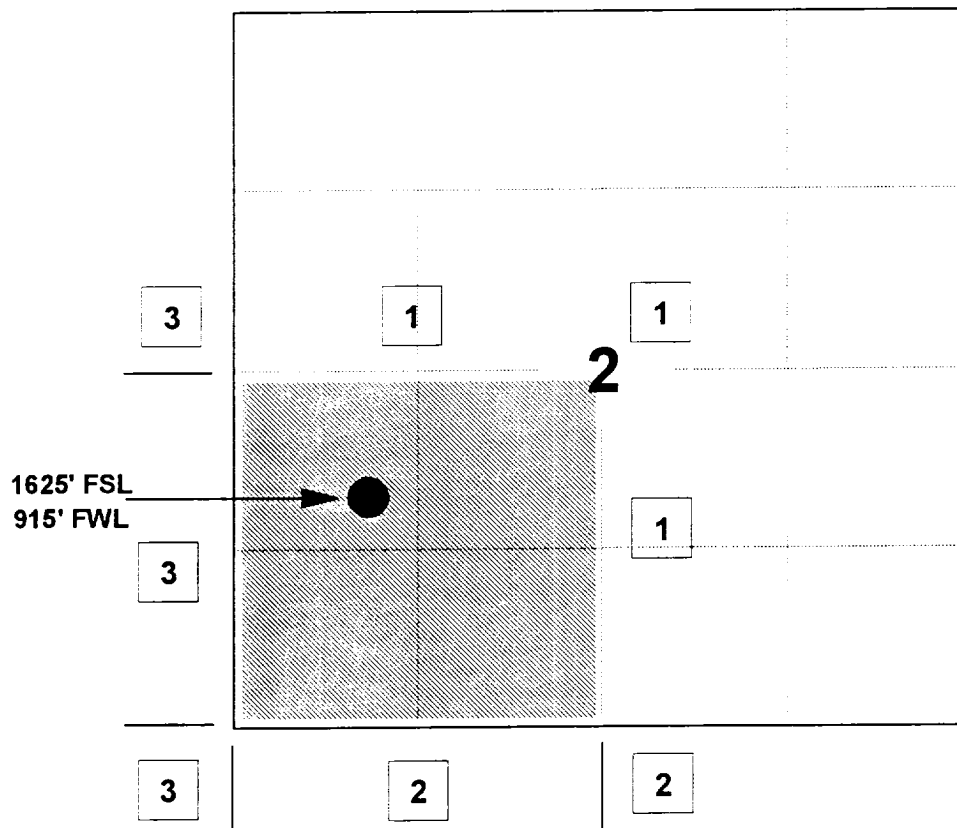
# MERIDIAN OIL INC

## JICARILLA G #6

OFFSET OPERATOR \ OWNER PLAT

Dakota / Mesaverde / Gallup Commingle Well

Township 26 North, Range 5 West



1) Meridian Oil Inc

2) Southland Royalty Company & Meridian Oil Inc

3) Amoco Production Co PO Box 800, Denver, CO 80201 &  
Conoco, Inc. 10 Desta Drive, Suite 100W, Midland, TX 79705

Gallup Formation

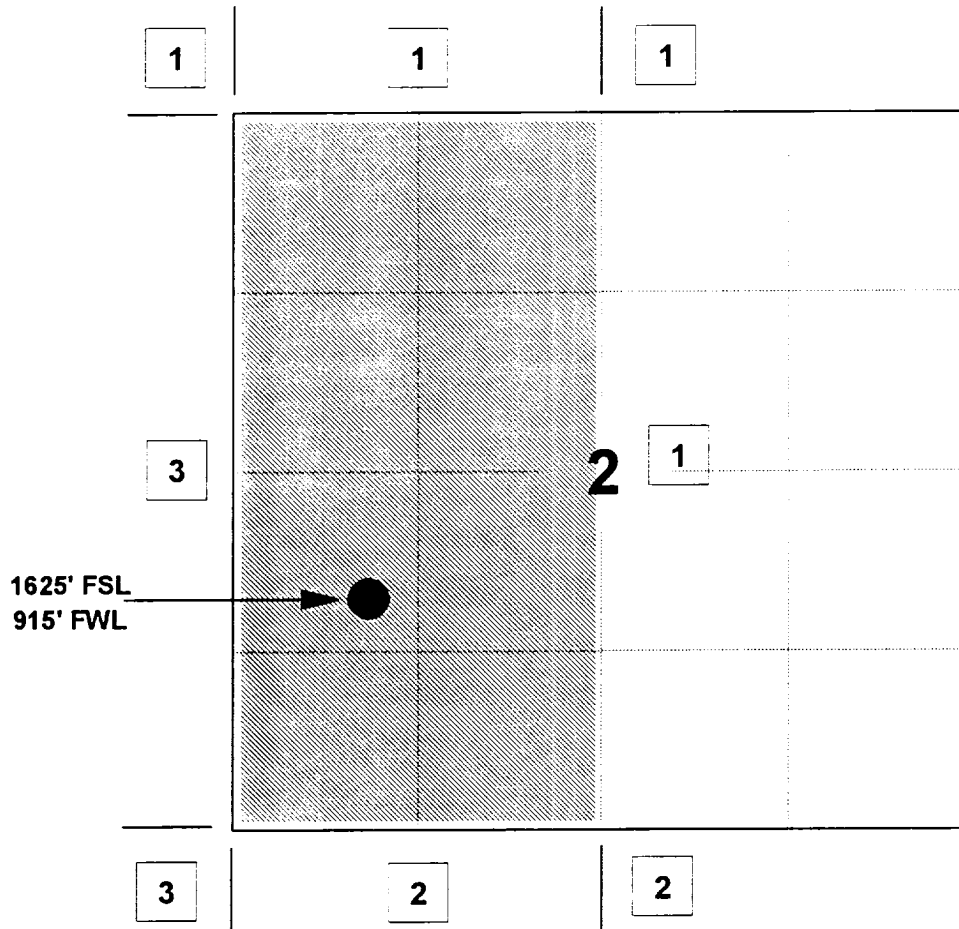
# MERIDIAN OIL INC

## JICARILLA G #6

OFFSET OPERATOR \ OWNER PLAT

Dakota / Mesaverde / Gallup Commingle Well

Township 26 North, Range 5 West

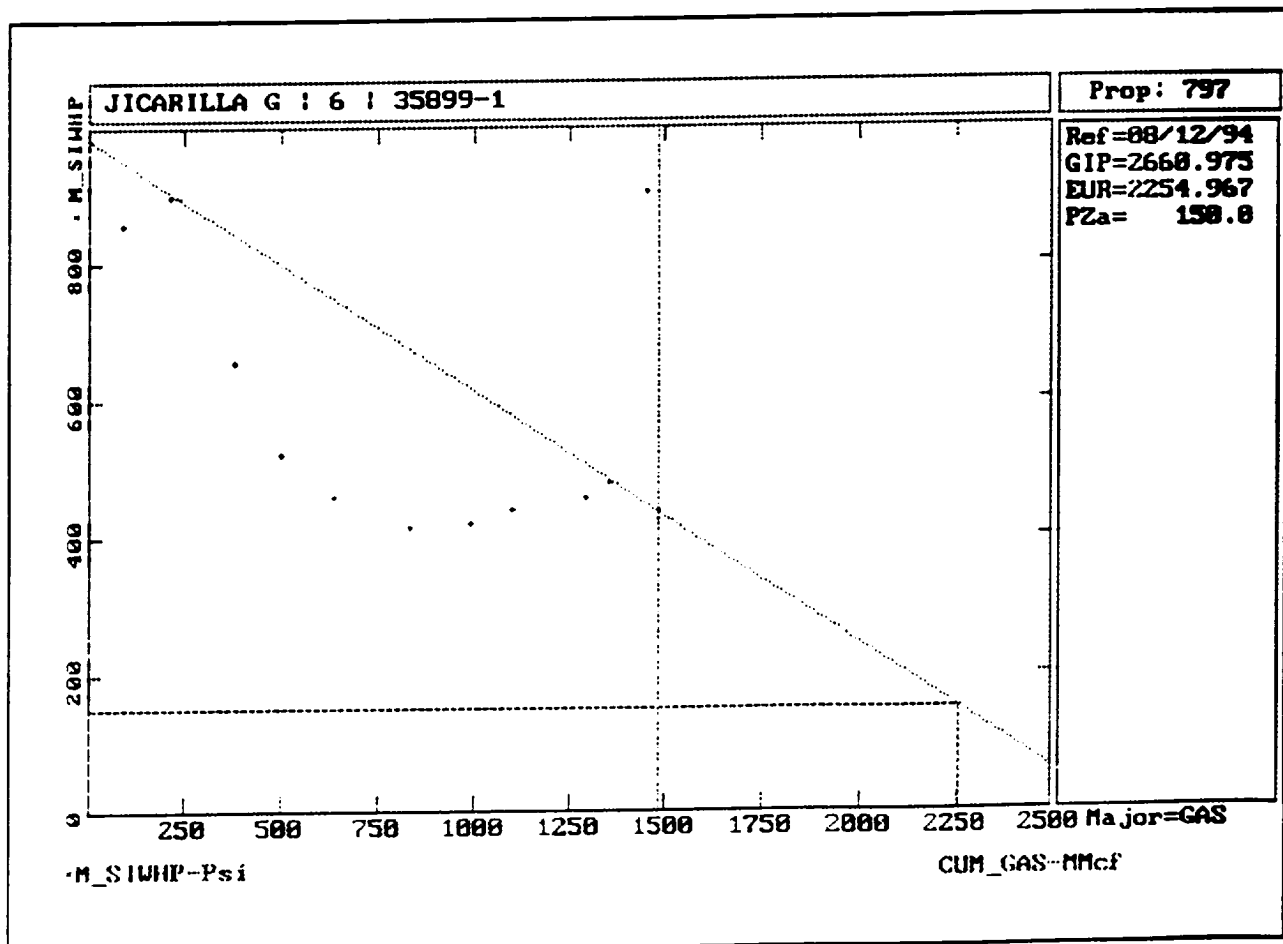
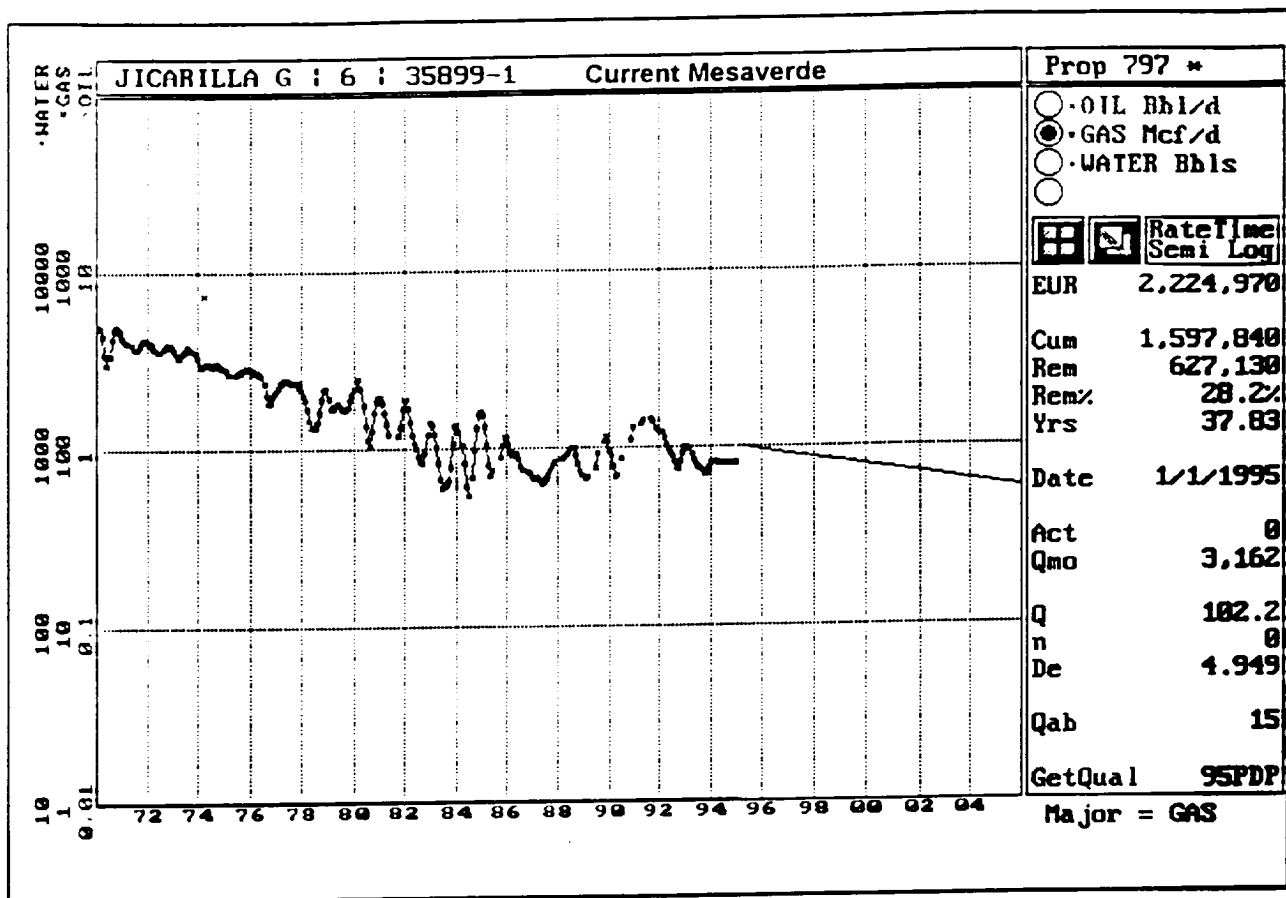


1) Meridian Oil Inc

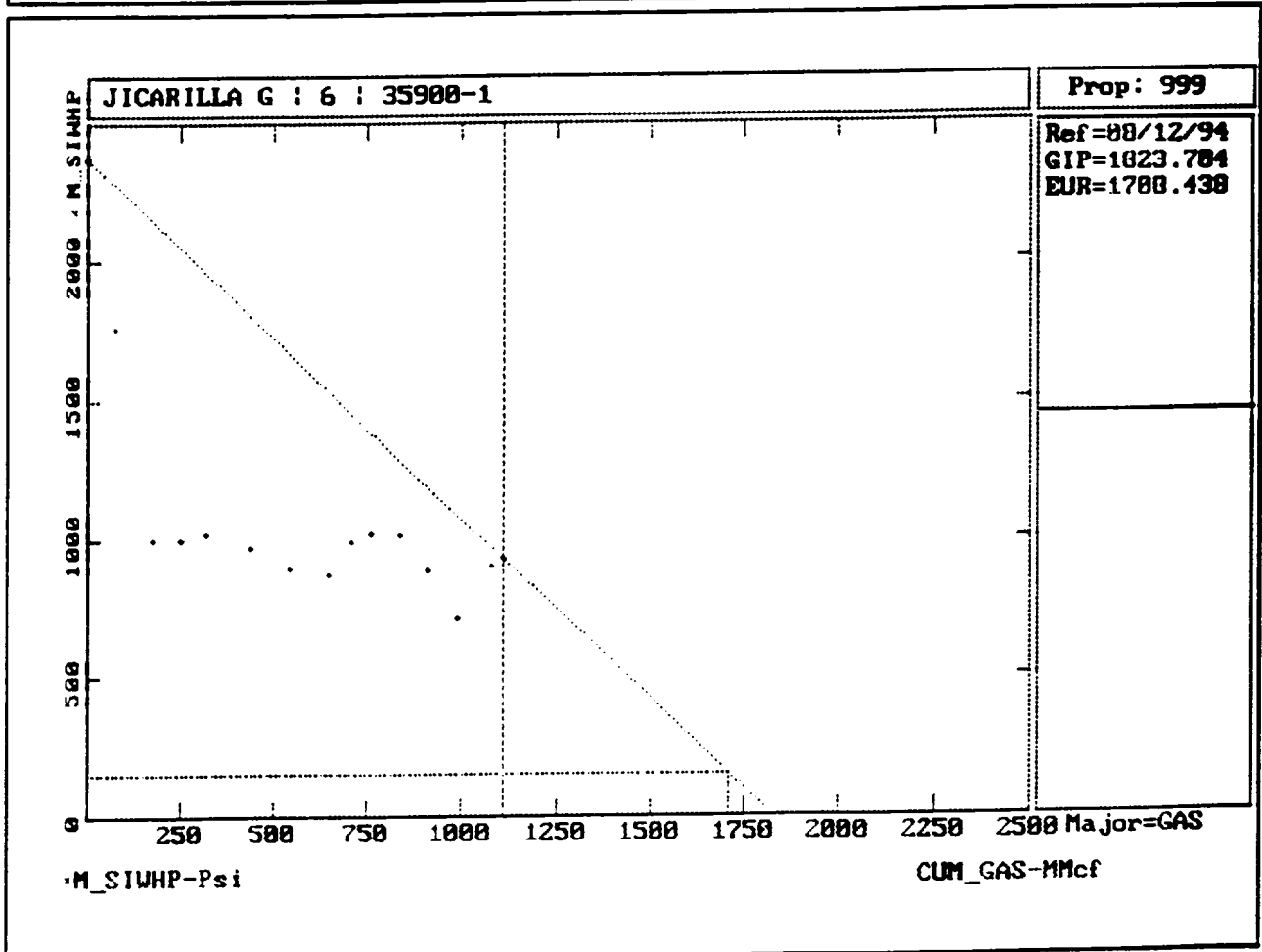
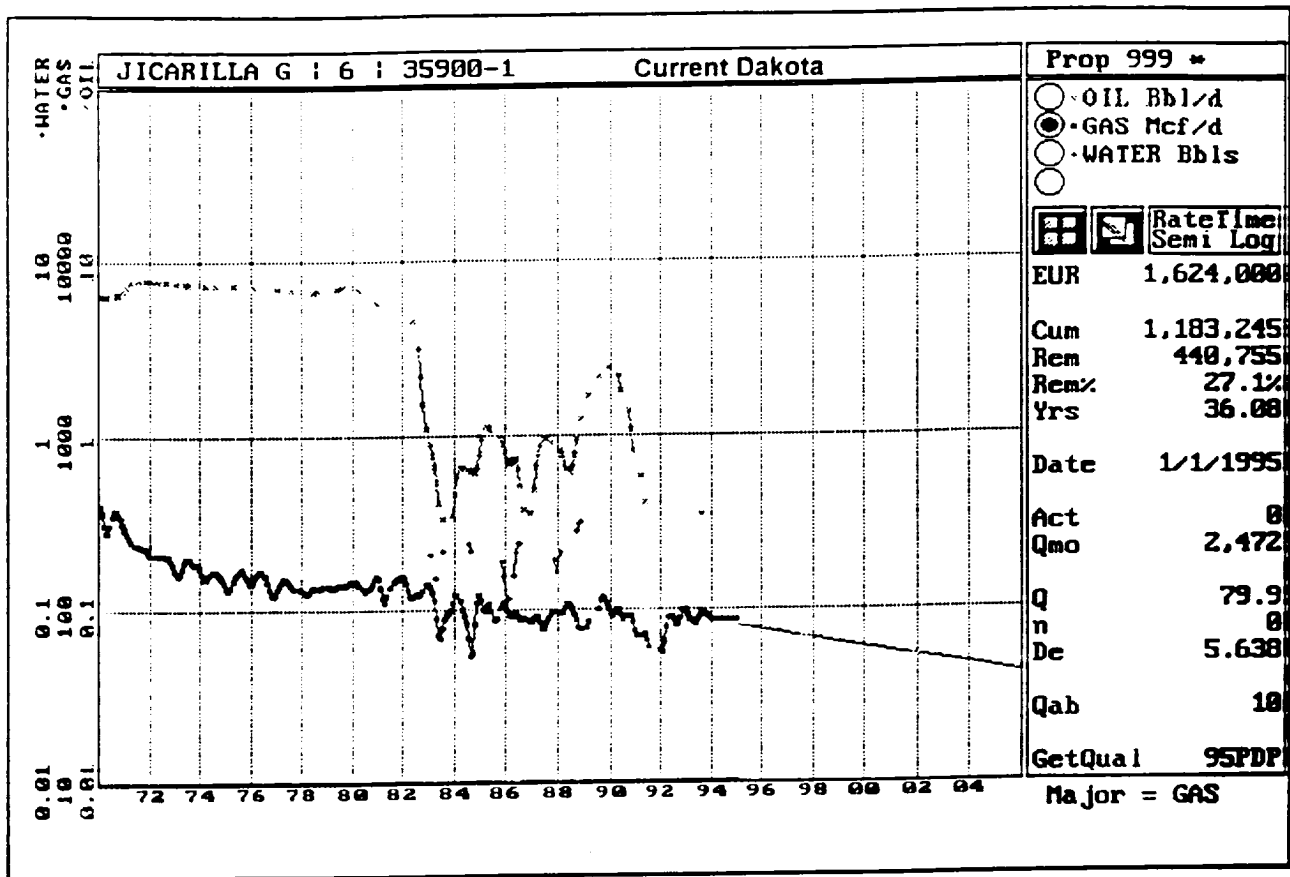
2) Southland Royalty Company & Meridian Oil Inc

3) Amoco Production Co

PO Box 800, Denver, CO 80201







# Jicarilla G # 6

T26NR05W02L

Recompletion & Commingle

## Current

KB: 6701'  
GL: 6689'

13-3/4" Hole  
10-3/4" 32.75#  
Casing  
@ 313'  
w/ 250 sxs to Surf

1-1/2"  
Tubing  
@ 7706'

Liner Top @  
3416'

9-7/8" Hole  
7-5/8" 26.4# Casing  
@ 3597'  
w/850 ft3

TOC 7-5/8"  
@ 1650'  
Will Verfy!

1-1/2"  
Tubing  
@ 6106'

TOC 5-1/2" @  
3416' - 7834'  
Circ 30 bbls @  
Liner

Mesaverde Perforations  
1 SPF 5042'-5166'

Dakota Perforations  
1 SPF 7724'-7746'  
1 SPF 7770'-7782'  
1 SPF 7803'-7808'

PBTD: 7813'  
TD: 7835'

## Proposed

KB: 6701'  
GL: 6689'

2 3/8" Tubing  
@ 7700'

Mesaverde Perforations  
1 SPF 5042'-5654'

Tocito Perforations  
1 SPF 7106'-7116'

Dakota Perforations  
1 SPF 7663'-7669'  
1 SPF 7630'-7636'  
1 SPF 7724'-7746'  
1 SPF 7770'-7782'  
1 SPF 7803'-7808'

PBTD: 7813'  
TD: 7835'

### Formation Tops

Ojo Alamo	2845'
Kirtland	2975'
Fruitland	3155'
Pict. Cliffs	3375'
Lewis	3560'
Cliff House	5030'
Menefee	5167'
Point Lookout	5554'
Mancos	5908'
Niobrara:	6763'
Tocito	7108'
Greenhorn	7504'
Graneros	7572'
Dakota	7623'
(Pagate):	7700'
(1st Cubero):	7762'
(2nd Cubero):	7802'
(Oak Canyon):	N.R.
(Encinal):	N.R.

6-3/4" Hole  
5-1/2" 15.5# Liner  
@ 3416'  
w/ 700 ft<sup>3</sup>

Meridian Oil Inc.  
08/11/94

**Pertinent Data Sheet-Jicarilla G # 6**

**Location:** Unit L Section 02, T26N-R05W  
1625' FSL, 915' FWL

Rio Arriba County, New Mexico

**Field:** Blanco Mesaverde  
Basin Dakota

Order MC-1889

**Elevations:** 6689' GL **TD:** 7835'  
6701' KB **PBTD:** 7813'

Note: possible KB Difference

**Completed:** 9/9/69  
**Spud:** 7/27/69

**DP #:** 35899 (MV) 35900 (DK)  
**GWI:** 62.5000 % 62.5000 %  
**NRI:** 54.6875 % 54.6875 %

**Casing Record:**

<u>Hole Size</u>	<u>Casing Size</u>	<u>Wt &amp; Grade</u>	<u>Depth Set</u>	<u>Sxs Cement</u>	<u>TOC</u>	
13-3/4"	10-3/4"	32.75# H-40	313'	250 sxs	Surface	Circulated good cmt
9-7/8"	7-5/8"	26.40# J-55	3597'	850 ft3	1650'	Need to verify!
6-3/4"	5-1/2" Liner	15.5# J-55	3416'-7834'	700 ft3	3416'	Circ 30 bbls @ Liner

Model 'D' PKR @ 7532' (No flapper!) Liner Top SQZ 100sxs

**Tubing & Rod Record:**

<u>Tubing Size:</u>	<u>Wt &amp; Grade</u>	<u>Depth Set</u>	
1-1/2" DK	2.90# EUE 10rd	7706'	1 jt 2-1/16 perf. 234 jts, 7 -2-1/16" blast jts from 5012'-5152'
1-1/2" MV	2.75# IJ 10rd	5106'	1 jt, 155 jts. F nipple MV @ 5098'. F nipple DK @ 7700'

**Formation Tops:**

Ojo Alamo:	2845'	Niobrara:	6763'
Kirtland:	2975'	Tocito:	7108'
Fruitland:	3155'	Greenhorn:	7504'
Pictured Cliffs:	3375'	Graneros:	7572'
Lewis:	3560'	Dakota (Two Wells):	7623'
Cliff House:	5030'	(Pagate):	7700'
Menefee:	5167'	(1st Cubero):	7762'
Point Lookout:	5554'	(2nd Cubero):	7802'
Mancos:	5908'	(Oak Canyon):	N.R.
		(Encinal):	N.R.

**Logging Record:** Temp, IEL, Density, GR-CCL, CBL date 9/3/69. BOND okay for Completion!

**Stimulation:** PT Csg. Failed. Test Liner Top. Sqz Liner top /100 sxs. DO. Test 3500 okay. Perf 1st Stage Dakota 1 SPF (0.52" holes) 7724'-7746', 7770'-7782', 7803'-7808' (42 holes total) Frac w/ 73,000 gal water & 50,000# 20/40, 10,000# 10/20, 1000# 12/20 glass at 65 BPM 3400 psi, 2500 ISIP CIBP @ 7680  
Perf 2nd Stage Dakota (0.52" holes) 7624'-7640' (17 holes total) Frac w/41,800 gal water & 20,000# 20/40, 10,000# 10/20, 500# 12/20 glass at 64 BPM 3500, 2600 ISIP CIBP @ 5180' Perf Cliffhouse (0.52" holes) 5032'-5046', 5086'-5104', 5110'-5128', 5134'-5139', 5144'-5146', 5160'-5166' (64 holes total) Frac w/62,500 gal water & 30,000# 20/40 50,000# 10/20 at 92 BPM 2800, drop balls 700 ISIP

**Workover History:** None

**Production History:**

	<u>Cum Gas MCF</u>	<u>Cum Oil bbls</u>	<u>Rem Gas MCF</u>	<u>Pipeline Pressure:</u>
Mesaverde:	1,597,000	225	627,000	200-220 psi
Dakota:	1,181,000	8046	442,000	Current Rates: 80 mcf/d / 0.5 bopd
				Current Rates:

**Transporter:**

Oil/Condensate: Meridian Oil Inc.  
Gas: Gas Company of New Mexico

## PROCEDURE FOR WORKOVER

Jicarilla G # 6

Unit L, Sec 02-T26N-R05W

Mesaverde/Dakota

Add Point Lookout, Meneffee, & Tocito to Wellbore & Commingle

Prior to Starting Operation. Inspect Location. Dig & Fence Work Pit. Test & Install Anchors if necessary. Contact Gas Company of New Mexico to obtain Drill Gas Meter for workover operation. Comply with all BLM, NMOCD & MOI rules and regulations. **Always Hold Safety Meetings!!**

- 
- \*\*\*\* Require Two-hundred-fifty-five (255) joints 2-3/8" 4.7# J-55 EUE tubing on location.
  - \*\*\*\* Require Four (4) 3-1/8" Drill collars, all changeovers, floats, & subs.
  - \*\*\*\* Require (7500') 3-1/2" 9.3# N-80 Upset Frac Tubing String on location for Frac.
  - \*\*\*\* Five (5) -400 bbl Frac Tanks & one (1) 400 bbl rig tank w/ 2% KCl water filtered 5 micron
- 

1. Move on Location. Call Tefteller to remove wireline during wellhead removal! (325-1731). Obtain & Record Bradenhead, Casing, & Both Tubing String Pressures on Report. Lay manifold & all lines. Pump 25 bbls 2% KCl water down DK tubing, pump 25 bbls 2% KCl down MV tubing. ND WH. NU Offset Spool, BOP & stripping rubber. Open well on blooie line.

2. TOOH & LD 1-1/2" 2.75# IJ 10rd Mesaverde tubing from 5106'. SN @ 5098'. Tubing may be crimped at 3000' +/- Contact Engineering if tubing is stuck, before pulling.

3. Swivel Spool. TOOH & LD 1-1/2" 2.90# EUE 10rd Dakota tubing from 7706'. (NOTE: 2-1/16" Blast Joints) DO NOT PULL OVER 20,000# + STRING WT. Pull seal assembly out from MODEL 'D' Production PKR @ 7532', Seven (7)-2-1/16" blast joints in string. *Wireline should work free once weight is removed from tubing.*

4. Change out rams to 2-3/8". Remove Offset Spool when possible. PU "44-26" CJ Milling tool, 3-1/8" Collars and 2-3/8" 4.7# J-55 tubing. TIH & mill top slips on PKR @ 7532'. Retrieve PKR, TOOH.

5. PU 4-3/4" mill, 3-1/8" collars, float, on 2-3/8". TIH and clean well out to PBTD of 7813' +/- TOOH.

6. RU wireline. Run 5-1/2" 15.5# casing gauge ring to 7813'. POOH. Run GR-CCL from PBTD to 3350'. Prepare to re-perforate additional Dakota Pay under full lubricator with 4" HSC gun GOEX-116 19 gram charge 0.44" dia holes 4 SPF 90 degree phasing (Total of 116 holes) bottom-up in a single gun run if possible. Correlate with attached log sections and GR-CCL. Note Liner top @ 3469'.

7803'	to	7808'	(5'	@ 4 SPF)	20 holes
7770'	to	7776'	(6'	@ 4 SPF)	24 holes
7724'	to	7730'	(6'	@ 4 SPF)	24 holes
7630'	to	7636'	(6'	@ 4 SPF)	24 holes
7553'	to	7559'	(6'	@ 4 SPF)	24 holes (Greenhorn)

7. Run 5-1/2" wireline set RBP. Set RBP#1 @ 7500'. Note Liner top @ 3469'. Make additional run with dump bailer. Place 2 sxs sand on top of RBP#1.

8. <sup>0</sup> PU 5-1/2" RBP & 5-1/2" Fullbore PKR assembly and TIH on 2-3/8" tubing. TIH to first RBP @ 7560'. Pump 50 bbls 2% KCl water to fill hole to Mesaverde. Set PKR and test RBP#1 @ 7500' & tubing to 3500 psi for 10 min.

9. Pull tubing uphole. w/2-3/8" tubing, set RBP#2 @ 5000' (approx 50' above top MV perf). w/ PKR set above RBP. Test RBP#2 & tubing to 3500 psi. Hold and record pressure 10 minutes. Release pressure. Fill hole from bottom with 2% KCl water, approx 200 bbls to remove any gas pockets. TOOH. Fill hole full prior to logging. Change out remaining tubing head to one which will accomodate a single string of 2-3/8" tubing.

10. RU wireline. Under Packoff, Run GR-CCL-CBL from RBP#2 to surface with 500 psi pressure. No Gaps. Record all cement tops on Report. When out of hole, pressure test casing from surface to 1000 psi. Hold pressure for 10 minutes. Engineering will evaluate Bond for potential squeezes, none are anticipated.

11. TIH w/ retrievinghead on 2-3/8". Engage RBP#2 @ 5000', equalize pressure, & TOOH with RBP#2.

12. Prepare to Perforate Tocito Gallup as follows: w/ 4" HSC gun GOEX-116 19 gram charges 0.44" dia holes 4 SPF 90 degree phase.

Holes from 7108' to 7116' (8' total of 32 holes).

13. Change out rams, elevators, & rubbers. PU 5-1/2" fullbore PKR, (2.75" ID) 'F' nipple, & 3-1/2" 9.3# N-80 Upset Frac String (2.992" ID, 3.75" OD). TIH with Frac string to 7000' Set PKR @ 7000' +/- Stimulate Tocito Gallup Interval per attached schedule. **STAGE # 1.** Nitrogen Foam & 55,000# 20/40 brady @ 15 BPM. All sand will be tagged w/ 0.3mc/1000# Ir-192. Max Pressure is 6000 psi. Flow well until closure on 1/8" choke. Release Stimulation Company.

14. Flow well back until returns of sand & liquid are minimal. Release PKR, TOOH & stand back 3-1/2" frac tubing string. MINIMIZE FLUID PUMPED DOWN TUBING TO COME OUT OF HOLE. Set plug in profile nipple if necessary.

15. RU wireline. Run 5-1/2" wireline set RBP. Set RBP @ 5715'+/-. Make additional run with dump bailer. Place 2 sxs sand on top of RBP. Note Plug has not been tested!

16. Prepare to Perforate Point Lookout & Meneffee under a full lubricator as follows: w/ 3-1/8" HSC gun select fire GOEX-116 12 gram charges 0.30" dia holes 1 SPF bottom-up. (Total of 28 holes).

5654', 5648', 5644', 5630', 5613', 5603', 5597', 5588', 5577', 5571',

5566', 5561', 5556', 5532', 5507', 5487', 5479', 5474', 5419', 5390',

5382', 5376', 5373', 5304', 5288', 5284', 5289', 5255'

17. Run 5-1/2" retrievingautomatic PKR, profile nipple, & 3-1/2" 9.3# N-80 Frac String. TIH with Frac string to 5700'. TEST RBP to 3500 psi prior to stimulation for 10 min. Pull up & set PKR @ 5200' on pipe with good bond. Breakdown Point Lookout & Meneffee Interval w/ 1000 gallons 10% HCl w/ 2gal/1000 corrosion inhibitor, 1 gal/1000 surfactant, & 5 gal/1000 iron control. Drop 50 - 7/8" RCN 1.3 sp gravity ball sealers in sets of 10 every 200 gallons. Flush with water at 20 BPM or max rate under 3500 psi. Ball off perforations to 3500 psi. Release Pressure, surge, displace. TIH and knock balls off perforations. Pull up and reset PKR @ 5200'.

18. **STAGE # 2** Frac well per attached schedule. 2% KCl water & friction reducer & 100,000# 20/40 brady @ 40 BPM. Max Pressure is 6000 psi. Sand will be tagged w/ 0.3mc/1000# Ir-192.

Jicarilla G # 6  
Commingle Workover  
MOI - 08/26/94

19. Flow well back until returns of sand & liquid are minimal. Release PKR, TOOH & LD 3-1/2" frac tubing string. MINIMIZE FLUID PUMPED DOWN TUBING TO COME OUT OF HOLE. Set plug in profile nipple if necessary. Change out rams, elevators, & rubbers.
20. TIH w/ 4-3/4" notch collar, float, & 2-3/8" tubing. Clean hole out to RBP @ 5715' with gas, Flare well. Clean well up and obtain good pitot gauge on entire Mesaverde. Record 15 min, 30 min, 45 min, & 1 hr. TOOH once water rate drops to less than 6 BPH.
21. PU one jt 2-3/8" openended, SN, 6' perf sub, 5-1/2" PKR, & remaining 2-3/8" tubing. Set PKR @ 5200'. Set slips, close pipe rams. Continue to flow test well. Obtain good pitot gauge on Point Lookout & Meneffee.
22. RU wireline. Run 24hr digital pressure bomb. Set bomb in SN. Flow well 2 hrs, followed by shut-in for 22 hrs. Pull bomb from well. Release PKR & TOOH w/ 2-3/8".
23. PU retrieving head. TIH on 2-3/8" and engage RBP @ 5715'. Equalize pressure & TOOH with RBP.
24. TIH w/ 4-3/4" notch collar, float, & 2-3/8" tubing. Clean hole out to RBP @ 7500' with gas, Flare well. Clean well up and obtain good pitot gauge on Mesaverde & Tocito. Record 15 min, 30 min, 45 min, & 1 hr. TOOH.
25. PU one jt 2-3/8" openended, SN, 6' perf sub, 5-1/2" PKR, & remaining 2-3/8" tubing. Set PKR @ 7050'. Set slips, close pipe rams. Continue to flow test Tocito. Obtain good pitot gauge on Tocito.
26. RU wireline. Run 24 hr digital pressure bomb. Set bomb in SN. Flow well 2 hrs, followed by shut-in for 22 hrs. Pull bomb from well. Release PKR & TOOH w/ 2-3/8".
27. PU retrieving head. TIH on 2-3/8" and engage RBP @ 7500'. Equalize pressure & TOOH with RBP.
28. PU 4-3/4" bit, float, & four (4) 3-1/8" drill collars on 2-3/8" tubing. Clean well out to 7813' with gas. Flare well. Pull above Dakota Perforations & pitot test well. Record 15 min, 30 min, 45 min, & 1 hr. TOOH.
29. RU wireline. Run After-Frac Gamma-Ray Log across all new zones. POOH.
30. PU & TIH w/5-1/2" PKR and 2-3/8" tubing. Set PKR @ 7500' on good bonded pipe. Establish rate below PKR w/ 2% KCl water. **MAXIMUM PRESSURE IS 4000 PSI.** Pump 1000 gallons 10% Acetic acid, followed by 1000 gallons 2% KCl water, followed by 1000 gallons 10% Acetic acid, flush with 2% KCl water. Run Nitrogen assist at 500 SCF/BBL in all fluid but flush. Ball off entire Dakota interval by dropping 250 - 1" RCN 1.30 specific gravity ballsealers in ten sets of twenty-five (25) balls (175 total perforations). Pump at maximum rate & maximum pressure. Release PKR, TOOH w/ PKR. **Do not knock balls off perfs!**
31. PU notched collar, float, & TIH w/ 2-3/8" tubing clean well out (note 1" balls) with gas to 7813'. Pull above Dakota and obtain good pitot gauge on entire well. Record 15 min, 30 min, 45 min, & 1 hr. Continue to clean well out until liquid returns are minimal, let well flow when possible. TOOH.

Jicarilla G # 6  
Commingle Workover  
MOI - 08/26/94

32. RU hydrotesters. TIH rabbiting & HYDROTESTING TUBING TO 2000 psi with production string as follows. One (1) jt 2-3/8" tubing openended, expendable check 'F' nipple (1.81" ID), eighteen (18) joints 2-3/8" tubing, one (1) 20' 3.062" blast joint for Tocito, & remaining two-hundred-twenty-nine (229) jts 2-3/8" tubing. Land tubing @ 7700'+/-. ND BOP, NU WH. Pump off expendable check and obtain final pitot test up 2-3/8" tubing for 15 min, 30 min, 45 min, & 1 hr. Swab in if necessary. RD and release rig to next location. No blast joints are run on Mesaverde Interval.

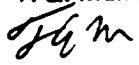
33. Production Engineering will finalize Commingle Allocation Formula and submit it to the Aztec NMOC office. SI well 7 days, run dip-in pressure bomb, perform deliverability test. Notify marketing that well will be restored to production. Allocation Formula will be determined with assistance of sales line production for a minimum of 3 months. This stabilized production is necessary to accurately validate the allocation formula.

Approved:

  
\_\_\_\_\_  
Drilling Superintendent

TEM

Suggested Vendors:

Stimulation Work:	Western Co. North America	327-6222
Logging/Perforating	Petro Wireline	326-6669
Pressure Bombs	Tefteller Inc.	325-1731
BP/PKR/Blast jts	Baker Service Tools	325-0216
3-1/2" Frac String	Cave Enterprises	325-3401
Radioactive Tagging	Protechnics Intl	326-7133
Engineering	T. E. Mullins	326-9546-W
		327-8692-pager

# MERIDIAN OIL

September 8, 1994

Bureau of Land Management  
Attn: Shirley Mondy  
435 Montano NE  
Albuquerque, New Mexico 87107

RE: **Downhole Commingling Request**  
Jicarilla G # 6  
Unit L, Section 02, T26N, R05W  
Rio Arriba County, New Mexico

Gentlemen:

Meridian Oil Inc. is applying to the New Mexico Oil Conservation Division for administrative approval as per Rule 303 C to downhole commingle production from the Blanco Mesaverde, B. S. Mesa Gallup, and Basin Dakota pools in the referenced well.

The purpose of this letter is to notify you of such action. If you have no objections to the proposed commingling order, please sign the attached copy of this letter and return it to this office.

Your prompt attention to this matter would be appreciated.

Sincerely,



Thomas E. Mullins  
Production Engineer

Waiver approval:

\_\_\_\_\_  
Date: \_\_\_\_\_

TEM



# MERIDIAN OIL

September 8, 1994

Amoco Production Company  
Attn.: Jicarilla Team  
P O Box # 800  
Denver, CO 80201

RE: **Downhole Commingling Request**  
**Jicarilla G # 6**  
**Unit L, Section 02, T26N, R05W**  
**Rio Arriba County, New Mexico**

Gentlemen:

Meridian Oil Inc. is applying to the New Mexico Oil Conservation Division for administrative approval as per Rule 303 C to downhole commingle production from the Blanco Mesaverde, B. S. Mesa Gallup, and Basin Dakota pools in the referenced well.

The purpose of this letter is to notify you of such action. If you have no objections to the proposed commingling order, please sign the attached copy of this letter and return it to this office.

Your prompt attention to this matter would be appreciated.

Sincerely,



Thomas E. Mullins  
Production Engineer

Waiver approval:

\_\_\_\_\_  
Date: \_\_\_\_\_

TEM

# MERIDIAN OIL

September 8, 1994

Conoco, Inc.  
10 Desta Drive, Suite # 100W  
Midland, TX 79705

RE: **Downhole Commingling Request**  
Jicarilla G # 6  
Unit L, Section 02, T26N, R05W  
Rio Arriba County, New Mexico

Gentlemen:

Meridian Oil Inc. is applying to the New Mexico Oil Conservation Division for administrative approval as per Rule 303 C to downhole commingle production from the Blanco Mesaverde, B. S. Mesa Gallup, and Basin Dakota pools in the referenced well.

The purpose of this letter is to notify you of such action. If you have no objections to the proposed commingling order, please sign the attached copy of this letter and return it to this office.

Your prompt attention to this matter would be appreciated.

Sincerely,



Thomas E. Mullins  
Production Engineer

Waiver approval:

---

Date: \_\_\_\_\_

TEM