

UNITED STATES  
DEPARTMENT OF THE INTERIOR  
GEOLOGICAL SURVEY

## APPLICATION FOR PERMIT TO DRILL, DEEPEN, OR PLUG BACK

## 1a. TYPE OF WORK

DRILL ☒DEEPEN ☐PLUG BACK ☐

## b. TYPE OF WELL

OIL  
WELL ☐GAS  
WELL ☒OTHER ☐SINGLE  
ZONE ☐MULTIPLE  
ZONE ☐

## 2. NAME OF OPERATOR

Aztec Oil and Gas Company

## 3. ADDRESS OF OPERATOR

Drawer 570, Farmington, New Mexico

## 4. LOCATION OF WELL (Report location clearly and in accordance with any State requirements.)\*

At surface

790 FSL &amp; 890 FWL, Section 12-26N-4W

At proposed prod. zone

## 14. DISTANCE IN MILES AND DIRECTION FROM NEAREST TOWN OR POST OFFICE\*

## 16. DISTANCE FROM PROPOSED\*

LOCATION TO NEAREST  
PROPERTY OR LEASE LINE, FT.  
(Also to nearest drlg. unit line, if any)

## 16. NO. OF ACRES IN LEASE

2561.86

17. NO. OF ACRES ASSIGNED  
TO THIS WELL

320 Acres

18. DISTANCE FROM PROPOSED\*  
TO NEAREST WELL, DRILLING, COMPLETED,  
OR APPLIED FOR, ON THIS LEASE, FT.

## 19. PROPOSED DEPTH

8060

## 20. ROTARY OR CABLE TOOLS

Rotary Tools

## 21. ELEVATIONS (Show whether DF, RT, GR, etc.)

6894 Gr

## 23.

## PROPOSED CASING AND CEMENTING PROGRAM

SIZE OF HOLE	SIZE OF CASING	WEIGHT PER FOOT	SETTING DEPTH	QUANTITY OF CEMENT
15"	10-3/4"	36#	300'	150 ex.
9-7/8"	7-5/8"	26.4#	3800'	300 ex.
6-3/4"	4-1/2"	11.6 & 10.5#	8060'	600 ex.

## PROPOSE TO:

Drill 15" surface hole, Ran 10-3/4" pipe set at 300' cmt w/ 150 ex.  
Drill 9-7/8" hole to 3800', Ran 7-5/8" intermediate cmt w/ 300 ex.  
Drill 6-3/4" hole to TD 8060', Ran 4 1/2" liner to 3800' to 8060' cmt w/ 600 ex.  
Ran ES Induction  
Perforate & Frac Dakota Zone

PRORATION UNIT: W/2 Section 12-26N-4W 320 Acres

IN ABOVE SPACE DESCRIBE PROPOSED PROGRAM: If proposal is to deepen or plug back, give data on present productive zone, and give blowout preventive program, if any.

## 24.

SIGNED

TITLE

District Superintendent

DATE

November 6, 1969

(This space for Federal or State office use)

PERMIT NO.

APPROVAL DATE

APPROVED

CONDITIONS OF APPROVAL, IF ANY:

NOV 6 1969

JERRY W. LONG  
DISTRICT ENGINEER

\*See Instructions On Reverse Side

U. S. GEOLOGICAL SURVEY  
DURANGO, COLO.

30-039-20291

5. LEASE DESIGNATION AND SERIAL NO.  
Jicarilla Apache Contract 101

6. IF INDIAN, ALLOTTEE OR TRIBE NAME  
Jicarilla

7. UNIT AGREEMENT NAME

8. FARM OR LEASE NAME  
Jicarilla 101

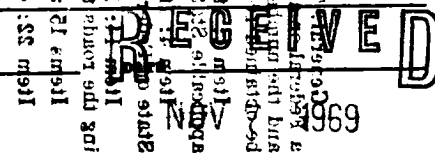
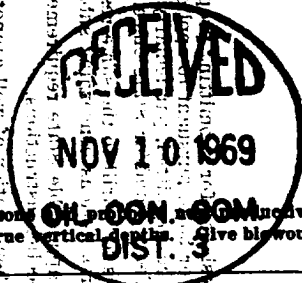
9. WELL NO.  
#2

10. FIELD AND POOL, OR WILDCAT  
Basin Dakota

11. SEC., T., R., M., OR BLK.  
AND SURVEY OR AREA  
Section 12-26N-4W

12. COUNTY OR PARISH  
Rio Arriba

13. STATE  
New Mexico



MEXICO OIL CONSERVATION COMMISSION  
WELL LOCATION AND ACREAGE DEDICATION PLAT

Form C-102  
Supersedes C-128  
Effective 1-1-65

All distances must be from the outer boundaries of the Section.

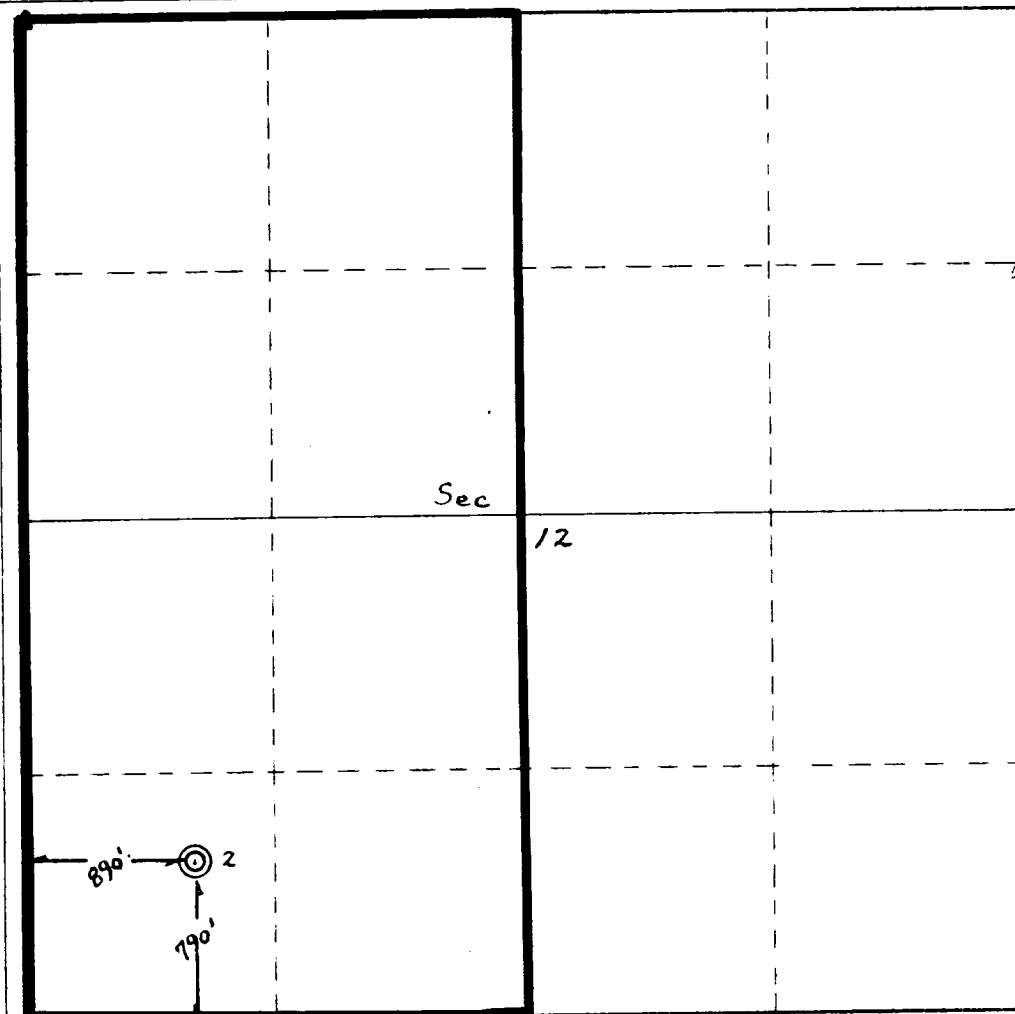
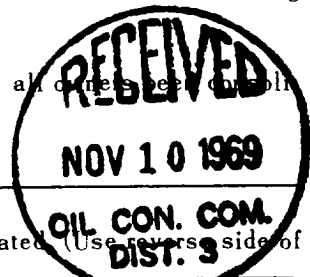
Operator <b>Aztec Oil &amp; Gas Company</b>			Lease <b>Jicarilla 101</b>		Well No. <b>2</b>
Unit Letter <b>M</b>	Section <b>12</b>	Township <b>26N</b>	Range <b>4W</b>	County <b>Rio Arriba</b>	
Actual Footage Location of Well: <b>790</b> feet from the <b>South</b> line and <b>890</b> feet from the <b>West</b> line					
Ground Level Elev. <b>6894</b>	Producing Formation <b>Dakota</b>		Pool <b>Basin Dakota</b>		Dedicated Acreage: <b>320</b> Acres

- Outline the acreage dedicated to the subject well by colored pencil or hachure marks on the plat below.
- If more than one lease is dedicated to the well, outline each and identify the ownership thereof (both as to working interest and royalty).
- If more than one lease of different ownership is dedicated to the well, have the interests of all owners consolidated by communitization, unitization, force-pooling, etc?

☐ Yes ☐ No If answer is "yes," type of consolidation \_\_\_\_\_

If answer is "no," list the owners and tract descriptions which have actually been consolidated (Use reverse side of this form if necessary.) \_\_\_\_\_

No allowable will be assigned to the well until all interests have been consolidated (by communitization, unitization, forced-pooling, or otherwise) or until a non-standard unit, eliminating such interests, has been approved by the Commission.



CERTIFICATION

I hereby certify that the information contained herein is true and complete to the best of my knowledge and belief.

*Joe C. Salmon*  
Name

*Joe C. Salmon*  
Position

*District Superintendent*  
Company

*Aztec Oil & Gas Company*  
Date

*November 6, 1969*

I hereby certify that the well location shown on this plat was plotted from field notes of actual surveys made by me or under my supervision, and that the same is true and correct to the best of my knowledge and belief.

Date Surveyed  
*October 5, 1969*

*Fred B. Kerr Jr.*  
Registered Professional Engineer  
and/or Land Surveyor

Certificate No.  
**3930**

RECEIVED

NOV 7 1969

U. S. GEOLOGICAL SURVEY  
DURANGO, COLO.