

UNITED STATES
DEPARTMENT OF THE INTERIOR
GEOLOGICAL SURVEY

30-039-20344

APPLICATION FOR PERMIT TO DRILL, DEEPEN, OR PLUG BACK

1a. TYPE OF WORK

DRILL ☒DEEPEN ☐PLUG BACK ☐

b. TYPE OF WELL

OIL
WELL ☐GAS
WELL ☒

OTHER

SINGLE
ZONE ☒MULTIPLE
ZONE ☐

2. NAME OF OPERATOR

Marathon Oil Company

3. ADDRESS OF OPERATOR

P. O. Box #39, Sidney, Nebraska 69162

4. LOCATION OF WELL (Report location clearly and in accordance with any State requirements.)*

At surface
1,840' FNL, 1,700' FEL, NE SW NE Section 33, T.26N., R.5W.

At proposed prod. zone

14. DISTANCE IN MILES AND DIRECTION FROM NEAREST TOWN OR POST OFFICE*

16. DISTANCE FROM PROPOSED*

LOCATION TO NEAREST
PROPERTY OR LEASE LINE, FT.
(Also to nearest drig. unit line, if any)18. DISTANCE FROM PROPOSED LOCATION
TO NEAREST WELL, DRILLING, COMPLETED,
OR APPLIED FOR, ON THIS LEASE, FT.

21. ELEVATIONS (Show whether DF, RT, or L)

6,502' GR

16. NO. OF ACRES IN LEASE

2,560

17. NO. OF ACRES ASSIGNED

TO THIS WELL
160

19. PROPOSED DEPTH

2,935'

20. ROTARY OR CABLE TOOLS

Rotary

22. APPROX. DATE WORK WILL START*

October 26, 1970

23.

PROPOSED CASING AND CEMENTING PROGRAM

SIZE OF HOLE	SIZE OF CASING	WEIGHT PER FOOT	SETTING DEPTH	QUANTITY OF CEMENT
9-7/8"	8-5/8"	24#	200'	100 sacks (Will be cemented to surface.)
7-7/8"	4 1/2"	10.5	2,935'	250 sacks (Will be cemented to surface.)

It is our intention to drill a Pictured Cliffs development well at the above location.

Low solids gel chemical mud will be used. Water loss will be maintained at 10 cc's or less below 2,800'.

The logging program will consist of a Compensated Formation Density - Gamma Ray - Caliper log from TD to base of surface casing. A Gamma Ray log will be run inside casing for perforating depth control.

No cores or DST's will be taken. Surveys to determine deviation from vertical will be taken at least once 500'.

BOP program will consist of a double hydraulic series 900 preventer with closing accumulator, blind rams, and rams to fit the drill pipe.

Porous intervals in the Pictured Cliffs will be perforated and fractured with 50,000# 10-20 sand mixed in water. Sealer balls will be used.

IN ABOVE SPACE DESCRIBE PROPOSED PROGRAM: If proposal is to deepen or plug back, give data on present productive zone and proposed new productive zone. If proposal is to drill or deepen directionally, give pertinent data on subsurface locations and measured and true vertical depths. Give blowout preventer program, if any.

24.

SIGNED

Frank Bant

TITLE District Operations Manager

DATE October 16, 1970

(This space for Federal or State office use)

PERMIT NO.

APPROVAL DATE

APPROVED BY

TITLE

DATE

CONDITIONS OF APPROVAL, IF ANY:

*See Instructions On Reverse Side

**NEW MEXICO OIL CONSERVATION COMMISSION
WELL LOCATION AND ACERAGE DEDICATION PLAT**

All distances must be from the outer boundaries of the Section

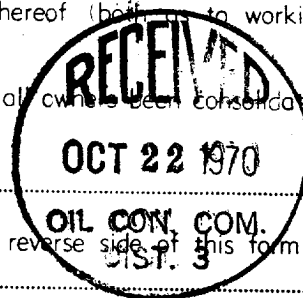
Operator MARATHON OIL COMPANY			Lease Jicarilla Apache		Well No. 15
Unit Letter G	Section 33	Township 26 North	Range 5 West	County Rio Arriba	
Actual Footage Location of Well: 1840 feet from the North line and 1700 feet from the East line Ground Level Elev. 6502 Producing Formation Pictured Cliffs Pool South Blanco Dedicated Acreage: 160 Acres					

1. Outline the acreage dedicated to the subject well by colored pencil or hachure marks on the plat below.
2. If more than one lease is dedicated to the well, outline each and identify the ownership thereof (both as to working interest and royalty),
3. If more than one lease of different ownership is dedicated to the well, have the interests of all owners been consolidated by communitization, unitization, force-pooling, etc?

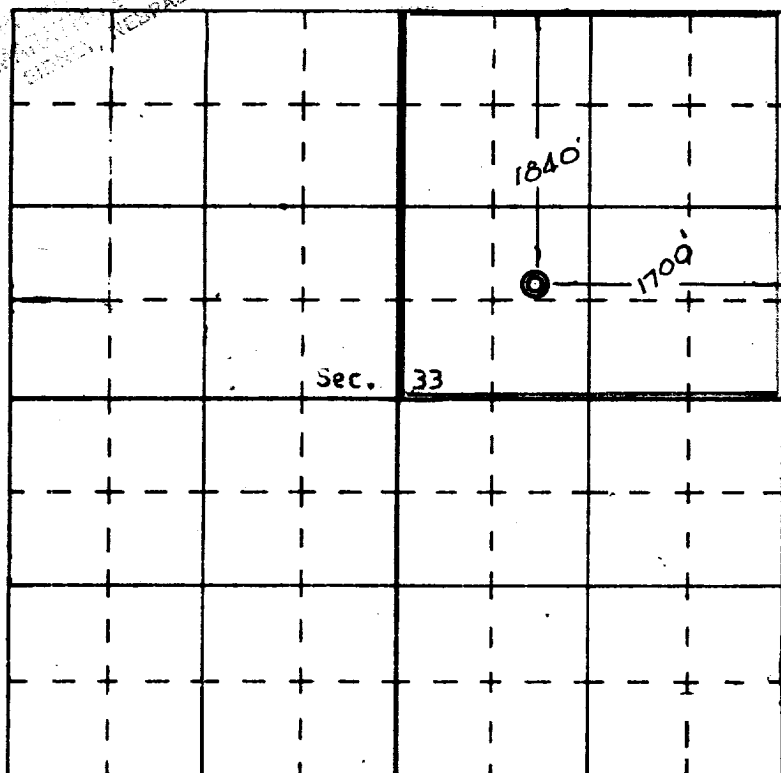
() Yes () No If answer is "yes," type of consolidation

If answer is "no," list the owners and tract descriptions which have actually consolidated. (Use reverse side of this form if necessary.)

No allowable will be assigned to the well until all interests have been consolidated (by communitization, unitization, forced-pooling, or otherwise) or until a non standard unit, eliminating such interests, has been approved by the Commission.



RECEIVED
OCT 15 1970
MARATHON OIL CO.
DENVER, NEBRASKA



N

CERTIFICATION

I hereby certify that the information contained herein is true and complete to the best of my knowledge and belief.

Frank Panett
Name
District Operations Manager
Position
Marathon Oil Company
Company
October 16, 1970
Date

September 29, 1970
Date Surveyed

I hereby certify that the location shown on this plat was obtained from field notes of actual surveys made by me or under my supervision, and that the same is true and correct to the best of my knowledge and belief.

September 29, 1970
Registered Professional Engineer
and/or Land Surveyor

E. V. Echohawk
Certificate No. 3602
E. V. Echohawk