

UNITED STATES
DEPARTMENT OF THE INTERIOR
GEOLOGICAL SURVEY

30-039-20641

5. LEASE DESIGNATION AND SERIAL NO.

SF 078879

6. IF INDIAN, ALLOTTEE OR TRIBE NAME

7. UNIT AGREEMENT NAME

Canyon Largo Unit

8. FARM OR LEASE NAME

Canyon Largo Unit

9. WELL NO.

241

10. FIELD AND POOL, OR WILDCAT

Basin Dakota

11. SEC., T., R., M., OR B.L.K.
AND SURVEY OR AREASec. 23, T-25-N, R-7-W
NMPM

12. COUNTY OR PARISH 13. STATE

Rio Arriba New Mexico

APPLICATION FOR PERMIT TO DRILL, DEEPEN, OR PLUG BACK

1a. TYPE OF WORK

DRILL ☒DEEPEN ☐PLUG BACK ☐

b. TYPE OF WELL

OIL
WELL ☐GAS
WELL ☒

OTHER

SINGLE
ZONE ☒MULTIPLE
ZONE ☐

2. NAME OF OPERATOR

El Paso Natural Gas Company

3. ADDRESS OF OPERATOR

PO Box 990, Farmington, NM 87401

4. LOCATION OF WELL (Report location clearly and in accordance with any State requirements.)*

At surface

1460'S, 1840'W

At proposed prod. zone

14. DISTANCE IN MILES AND DIRECTION FROM NEAREST TOWN OR POST OFFICE*

15. DISTANCE FROM PROPOSED*

LOCATION TO NEAREST
PROPERTY OR LEASE LINE, FT.
(Also to nearest drilg. unit line, if any)

16. NO. OF ACRES IN LEASE

17. NO. OF ACRES ASSIGNED
TO THIS WELL

320.00

18. DISTANCE FROM PROPOSED LOCATION*
TO NEAREST WELL, DRILLING, COMPLETED,
OR APPLIED FOR, ON THIS LEASE, FT.

19. PROPOSED DEPTH

7270'

20. ROTARY OR CABLE TOOLS

Rotary

21. ELEVATIONS (Show whether DF, RT, GR, etc.)

6810'GR

22. APPROX. DATE WORK WILL START*

23.

PROPOSED CASING AND CEMENTING PROGRAM

SIZE OF HOLE	SIZE OF CASING	WEIGHT PER FOOT	SETTING DEPTH	QUANTITY OF CEMENT
13 3/4"	9 5/8"	32.3#	200'	224 cu. ft. slurry to circulate
8 3/4"	4 1/2"	10.5#	5195'	1140 cu. ft. in 3 stages
7 7/8"	4 1/2"	10.5#	6500'	
7 7/8"	4 1/2"	11.6#	7270'	

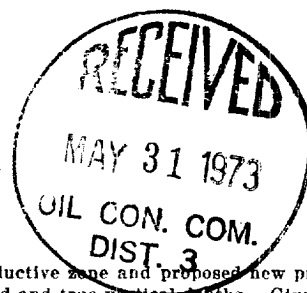
1st stage - 381 cu. ft. cement, 25% excess to cover the Gallup formation

2nd stage - 430 cu. ft. cement, 50% excess to cover the Mesa Verde formation.

3rd stage - 329 cu. ft. cement, 60% excess to fill to the base of the Ojo Alamo formation.

Selectively perforate and sandwater fracture the Dakota formation.

The W/2 of Section 23 is dedicated to this well.



IN ABOVE SPACE DESCRIBE PROPOSED PROGRAM: If proposal is to deepen or plug back, give data on present productive zone and proposed new productive zone. If proposal is to drill or deepen directionally, give pertinent data on subsurface locations and measured and true vertical depths. Give blowout preventer program, if any.

24.

SIGNED *A. H. Sisco*

TITLE Drilling Clerk

DATE May 25, 1973

(This space for Federal or State office use)

PERMIT NO.

APPROVAL DATE

APPROVED BY *SA*

TITLE

DATE

CONDITIONS OF APPROVAL, IF ANY:

NEW MEXICO OIL CONSERVATION COMMISSION
WELL LOCATION AND ACREAGE DEDICATION PLAT

Supersedes C-128
Effective 1-1-67

All distances must be from the outer boundaries of the section.

EL PASO NATURAL GAS COMPANY		CANYON LARGO UNIT (SF-078879)		241
K	23	25-N	7-W	RIO ARriba
1460	SOUTH	1840	WEST	
6810	DAKOTA	BASIN DAKOTA	320.00	

1. Outline the acreage dedicated to the subject well by colored pencil or hatchure marks on the plat below.
2. If more than one lease is dedicated to the well, outline each and identify the ownership thereof (including interest and royalty).
3. If more than one lease of different ownership is dedicated to the well, have the interests of all owners been consolidated by communitization, unitization, force-pooling, etc?

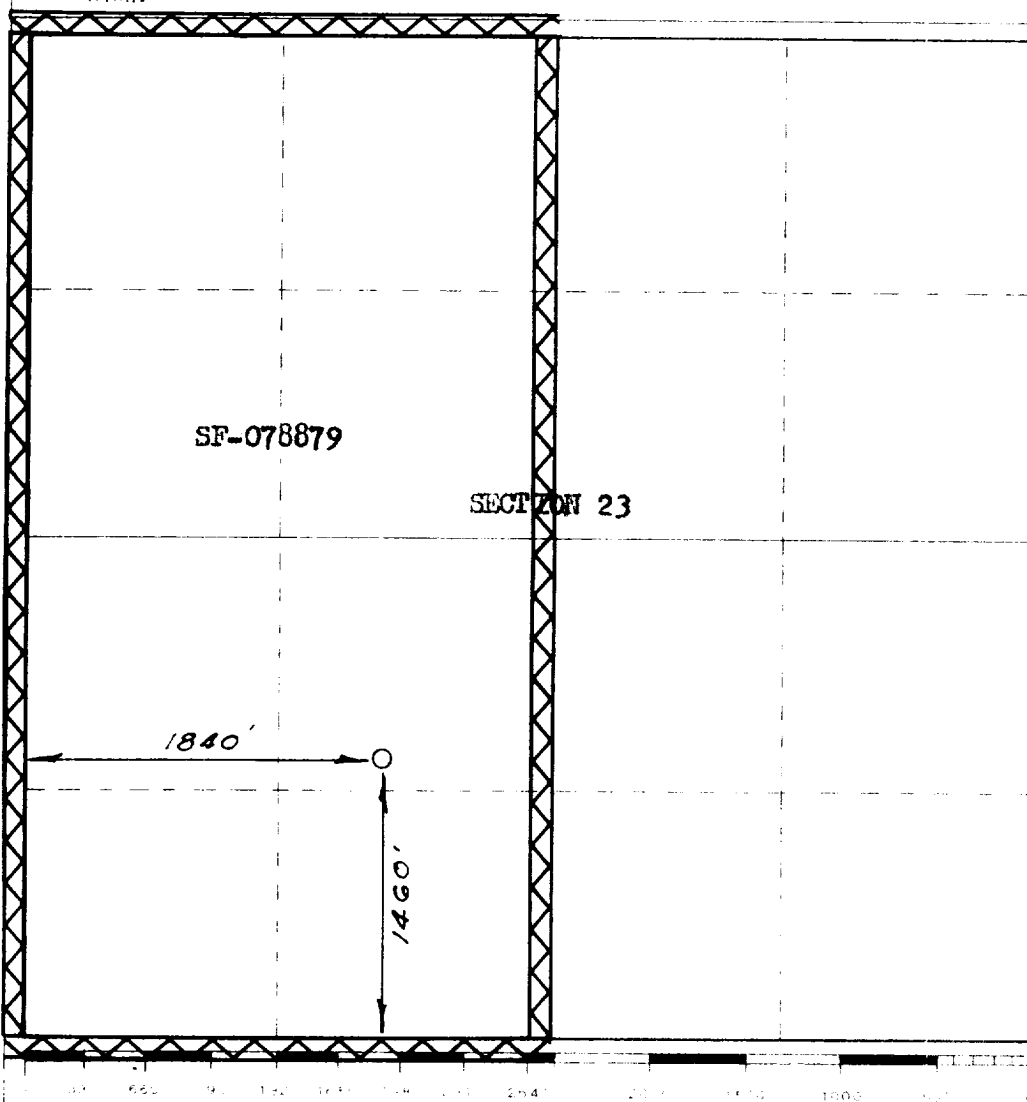
☒ Yes ☐ No If answer is "yes," type of consolidation _____

Unitization



If answer is "no," list the owners and tract descriptions which have actually been consolidated. (Use reverse side of this form if necessary.) _____

No allowable will be assigned to the well until all interests have been consolidated (by communitization, unitization, forced-pooling, or otherwise) or until a non-standard unit, eliminating such interests, has been approved by the Commission.



CERTIFICATION

I hereby certify that the information contained herein is true and complete to the best of my knowledge and belief.

Original Signed by
D. G. Brisco

Drilling Clerk

El Paso Natural Gas Co.

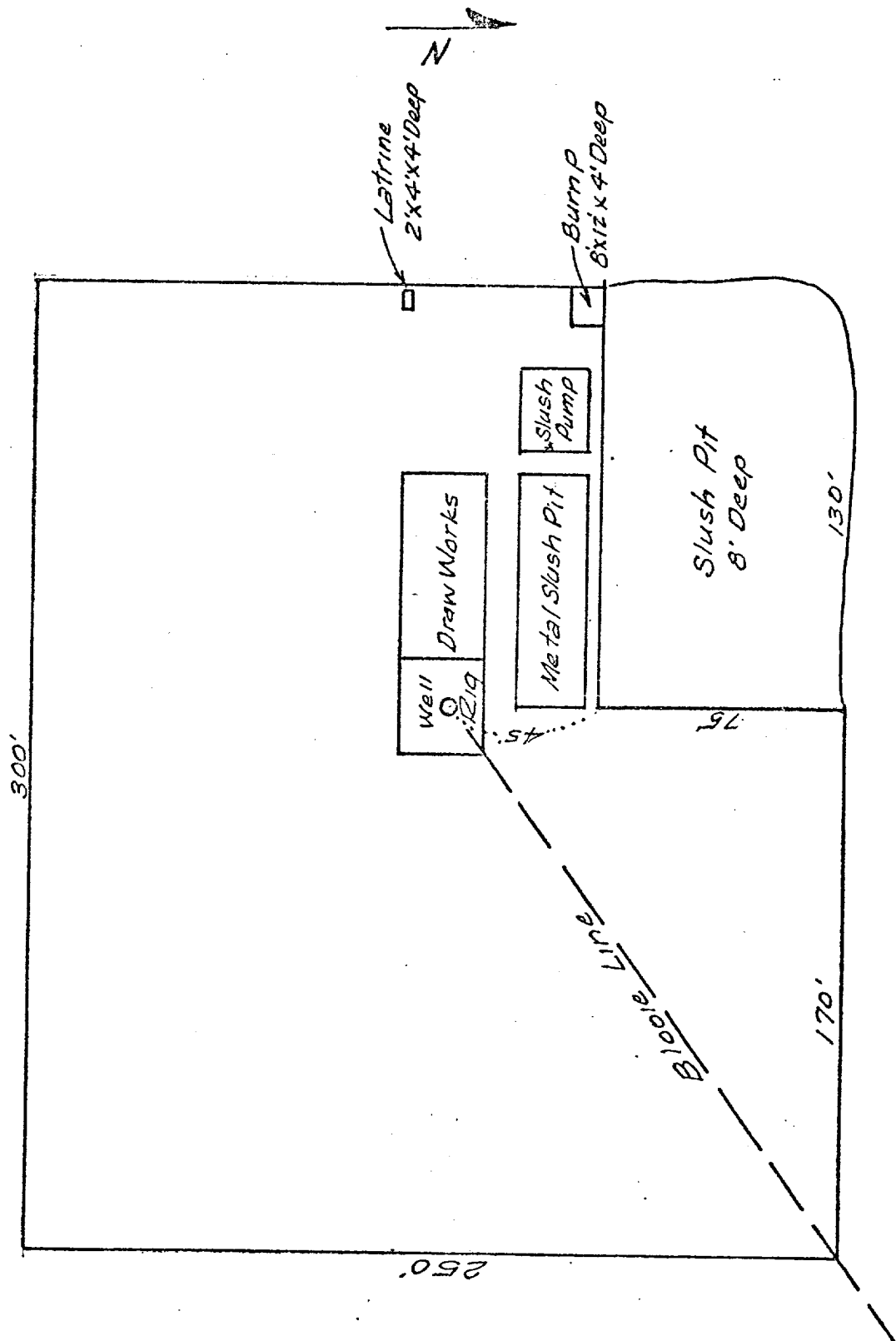
May 25, 1973

I hereby certify that the well location shown on this plat was plotted from field notes of actual survey made by me or under my supervision, and that the same is true and correct to the best of my knowledge and belief.

MAY 11, 1973

David Chisum
1760

CANYON LARGO UNIT # 241 (DIL)



Canyon Largo Unit #241 (Dk)

