

UNITED STATES
DEPARTMENT OF THE INTERIOR
GEOLOGICAL SURVEY

30-039-20907

5. LEASE DESIGNATION AND SERIAL NO.

SF 078878

6. IF INDIAN, ALLOTTEE OR TRIBE NAME

7. UNIT AGREEMENT NAME
Canyon Largo Unit

8. FARM OR LEASE NAME
Canyon Largo Unit

9. WELL NO.

256

10. FIELD AND POOL, OR WILDCAT

Basin Dakota

11. SEC., T., R., M., OR BBL.
AND SURVEY OR AREA
Sec. 27, T-25-N, R-7-W
NMPM

12. COUNTY OR PARISH 13. STATE

Rio Arriba NM

1a. TYPE OF WORK

DRILL ☒

DEEPEN ☐

PLUG BACK ☐

b. TYPE OF WELL

OIL
WELL ☐

GAS
WELL ☒

OTHER

SINGLE
ZONE ☒

MULTIPLE
ZONE ☐

2. NAME OF OPERATOR

El Paso Natural Gas Company

3. ADDRESS OF OPERATOR

PO Box 990, Farmington, NM 87401

4. LOCATION OF WELL (Report location clearly and in accordance with any State requirements.)*

At surface

1520'S, 1760'W

At proposed prod. zone

14. DISTANCE IN MILES AND DIRECTION FROM NEAREST TOWN OR POST OFFICE*

15. DISTANCE FROM PROPOSED*

LOCATION TO NEAREST
PROPERTY OR LEASE LINE, FT.
(Also to nearest dist. unit line, if any)

16. NO. OF ACRES IN LEASE

17. NO. OF ACRES ASSIGNED
TO THIS WELL

320.00

18. DISTANCE FROM PROPOSED LOCATION*
TO NEAREST WELL, DRILLING COMPLETED,
OR APPLIED FOR, ON THIS LEASE, FT.

19. PROPOSED DEPTH

7165'

20. ROTARY OR CABLE TOOLS

Rotary

21. ELEVATIONS (Show whether DE, RT, GR, etc.)

6969'GL

22. APPROX. DATE WORK WILL START*

23.

PROPOSED CASING AND CEMENTING PROGRAM

SIZE OF HOLE	SIZE OF CASING	WEIGHT PER FOOT	SETTING DEPTH	QUANTITY OF CEMENT
13 3/4"	9 5/8"	32.3#	200'	224 cu. ft. to circulate
8 3/4" & 7 7/8"	4 1/2"	10.5# & 11.6#	7165'	1809 cu. ft. - 2 stages

Production Casing Cementing:

1st stage - 324 cu. ft. to cover Gallup formation

2nd stage - 1485 cu. ft. to cover Ojo Alamo

Selectively perforate and sandwater fracture the Dakota formation.

The W/2 of Section 27 is dedicated to this well.

IN ABOVE SPACE DESCRIBE PROPOSED PROGRAM: If proposal is to deepen or plug back, give data on present productive zone and proposed new productive zone. If proposal is to drill or deepen directionally, give pertinent data on subsurface locations and measured and true vertical depths. Give blowout preventer program, if any.

24.

SIGNED

A. H. Swires

TITLE

Drilling Clerk

DATE

May 22, 1974

(This space for Federal or State office use)

PERMIT NO.

APPROVAL DATE

APPROVED BY

AW

TITLE

DATE

CONDITIONS OF APPROVAL, IF ANY:

*See Instructions On Reverse Side



**NEW MEXICO OIL CONSERVATION COMMISSION
WELL LOCATION AND ACREAGE DEDICATION PLAT**

Form C-102
Supersedes C-128
Effective 1-1-65

All distances must be from the outer boundaries of the Section.

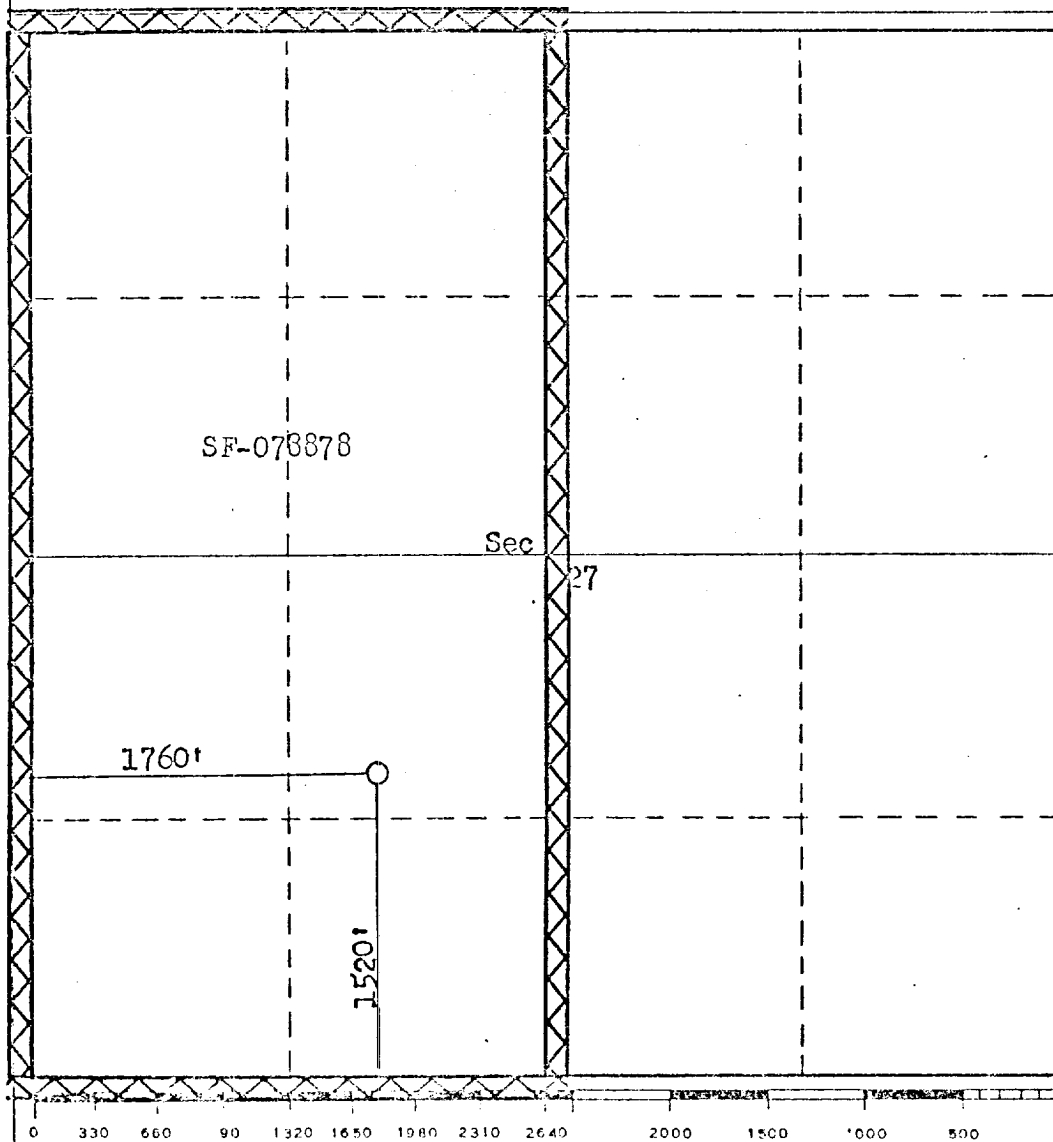
Operator El Paso Natural Gas Company			Lease Canyon Largo Unit (SF-078878)		Well No. 256
Unit Letter K	Section 27	Township 25N	Range 7W	County Rio Arriba	
Actual Footage Location of Well: 1520 feet from the South line and 1760 feet from the West line					
Ground Level Elev. 6969	Producing Formation Dakota	Pool Basin Dakota		Dedicated Acreage: 320.00 Acres	

1. Outline the acreage dedicated to the subject well by colored pencil or hatchure marks on the plat below.
2. If more than one lease is dedicated to the well, outline each and identify the ownership thereof (both as to working interest and royalty).
3. If more than one lease of different ownership is dedicated to the well, have the interests of all owners been consolidated by communitization, unitization, force-pooling, etc?

☒ Yes ☐ No If answer is "yes," type of consolidation Unitization

If answer is "no," list the owners and tract descriptions which have actually been consolidated. (Use reverse side of this form if necessary.) _____

No allowable will be assigned to the well until all interests have been consolidated (by communitization, unitization, forced-pooling, or otherwise) or until a non-standard unit, eliminating such interests, has been approved by the Commission.



CERTIFICATION

I hereby certify that the information contained herein is true and complete to the best of my knowledge and belief.

A. J. Quinn

Name
Position
Company
Date

Drilling Clerk
El Paso Natural Gas Co.
May 22, 1974

I hereby certify that the well location shown on this plat was plotted from field notes of actual surveys made by me or under my supervision, and that the same is true and correct to the best of my knowledge and belief.

Date Surveyed
Registered Professional Engineer and/or Land Surveyor
Certificate No.

April 16, 1974
Fred B. Kern Jr.
Fred B. Kern Jr.
3950