

30-039-21165

UNITED STATES
DEPARTMENT OF THE INTERIOR
GEOLOGICAL SURVEY

APPLICATION FOR PERMIT TO DRILL, DEEPEN, OR PLUG BACK

1a. TYPE OF WORK
 DRILL DEEPEN PLUG BACK

b. TYPE OF WELL
 OIL WELL GAS WELL OTHER SINGLE ZONE MULTIPLE ZONE

2. NAME OF OPERATOR
 Mobil Oil Corporation

3. ADDRESS OF OPERATOR
 P. O. Box 633, Midland, Texas 79701

4. LOCATION OF WELL (Report location clearly and in accordance with any State requirements.)*
 At surface 1530' FNL & 990' FWL, Sec. 2, T-26-N, R-3-W
 At proposed prod. zone Same as surface

14. DISTANCE IN MILES AND DIRECTION FROM NEAREST TOWN OR POST OFFICE*

16. DISTANCE FROM PROPOSED* LOCATION TO NEAREST PROPERTY OR LEASE LINE, FT. (Also to nearest drig. unit line, if any) 990'

16. NO. OF ACRES IN LEASE 2530.72

17. NO. OF ACRES ASSIGNED TO THIS WELL 320 (2 wells) 3/2.70

18. DISTANCE FROM PROPOSED LOCATION* TO NEAREST WELL, DRILLING, COMPLETED, OR APPLIED FOR, ON THIS LEASE, FT. 2639.5'

19. PROPOSED DEPTH 6500

20. ROTARY OR CABLE TOOLS Rotary

21. ELEVATIONS (Show whether DF, RT, GR, etc.) 7071' Ground

22. APPROX. DATE WORK WILL START* As soon as possible

23. PROPOSED CASING AND CEMENTING PROGRAM

SIZE OF HOLE	SIZE OF CASING	WEIGHT PER FOOT	SETTING DEPTH	QUANTITY OF CEMENT
12-1/4"	8-5/8"	20# - Miscp	0 - 300'	(1) Circulate to surface
7-7/8"	4-1/2"	9.5# - K-55	0 - 6500'	(2) Circulate to surface

CEMENTING PROGRAM

- (1) Class B cement containing 2% CaCl₂
- (2) Circulate in two stages using light weight filler cement in the lead slurry of each stage and tail w/neat cement to cover pay zone.

MUD PROGRAM

Depth	Type Mud	Weight	Viscosity	PH	Water Loss
0 - 300'	Spud				
300'-6500'	Fresh water gel	8.8 - 9.2	30-50	9+	10 cc

BLOWOUT PREVENTER PROGRAM ATTACHED

IN ABOVE SPACE DESCRIBE PROPOSED PROGRAM: If proposal is to deepen or plug back, give data on present productive zone and proposed new productive zone. If proposal is to drill or deepen directionally, give pertinent data on subsurface locations and measured and true vertical depths. Give blowout preventer program, if any.

24. SIGNED A. D. Bond TITLE Proration Staff Assistant DATE December 1, 1975

(This space for Federal or State office use)

PERMIT NO. _____ APPROVAL DATE _____

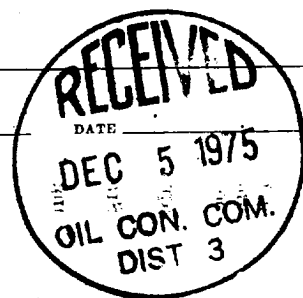
APPROVED BY _____ TITLE _____

CONDITIONS OF APPROVAL, IF ANY:

Okue

SA

*See Instructions On Reverse Side



**NEW MEXICO OIL CONSERVATION COMMISSION
WELL LOCATION AND ACREAGE DEDICATION PLAT**

Form C-102
Supersedes C-128
Effective 1-1-65

All distances must be from the outer boundaries of the Section.

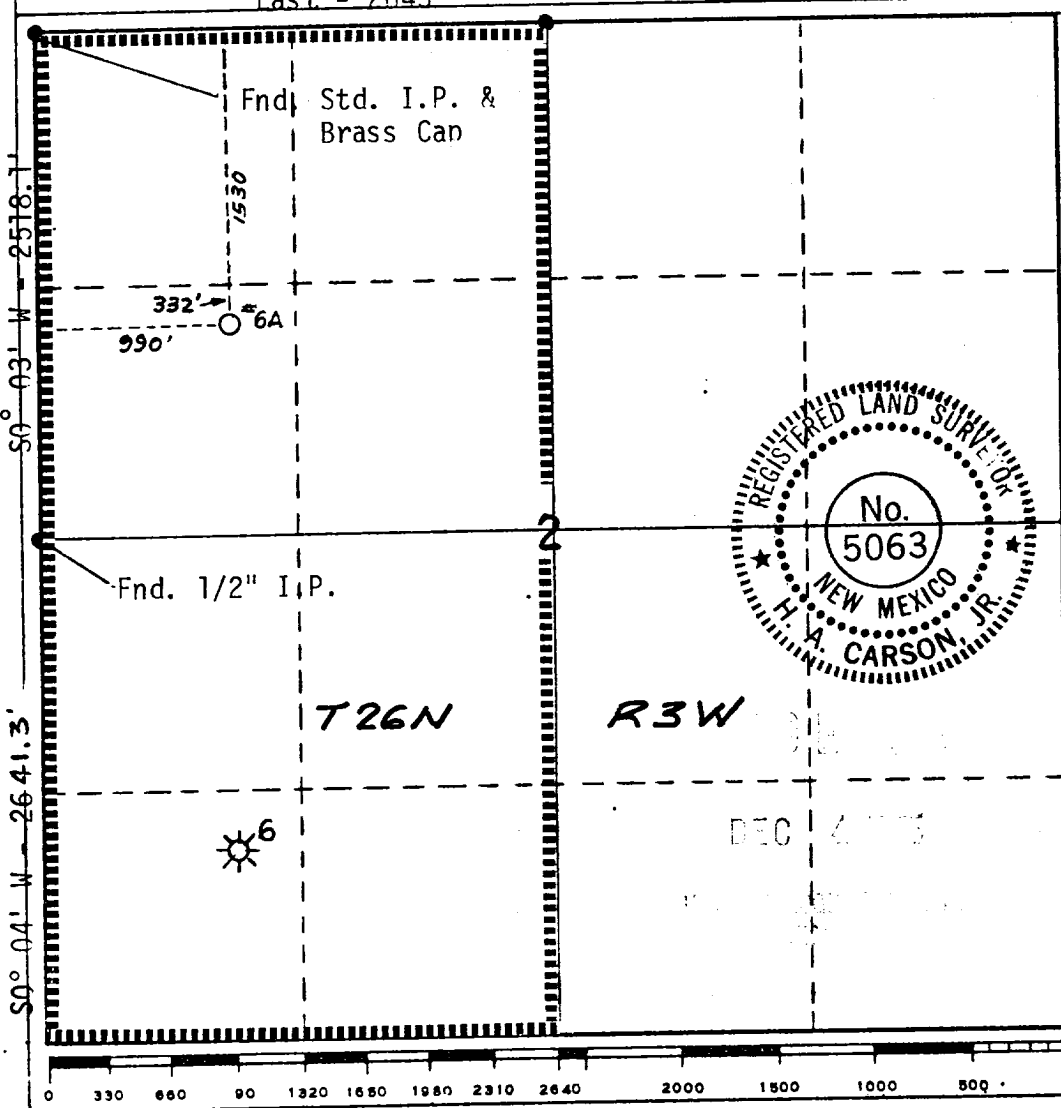
Operator Mobil Oil Corporation		Lease Jicarilla H		Well No. 6A
Unit Letter E	Section 2	Township 26N	Range 3W	County Rio Arriba
Actual Footage Location of Well: 1530 feet from the North line and 990' feet from the West line 312.70				
Ground Level Elev. 7071'	Producing Formation Mesaverde	Pool Blanco Mesaverde	Dedicated Acreage: 320 (2 wells) Acres	

1. Outline the acreage dedicated to the subject well by colored pencil or hachure marks on the plat below.
2. If more than one lease is dedicated to the well, outline each and identify the ownership thereof (both as to working interest and royalty).
3. If more than one lease of different ownership is dedicated to the well, have the interests of all owners been consolidated by communitization, unitization, force-pooling, etc?

Yes No If answer is "yes," type of consolidation _____

If answer is "no," list the owners and tract descriptions which have actually been consolidated. (Use reverse side of this form if necessary.) _____

No allowable will be assigned to the well until all interests have been consolidated (by communitization, unitization, forced-pooling, or otherwise) or until a non-standard unit, eliminating such interests, has been approved by the Commission.



CERTIFICATION

I hereby certify that the information contained herein is true and complete to the best of my knowledge and belief.

A. D. Bond

Name A. D. Bond
Position Proration Staff Assistant
Company Mobil Oil Corporation
Date December 1, 1975

I hereby certify that the well location shown on this plat was plotted from field notes of actual surveys made by me or under my supervision, and that the same is true and correct to the best of my knowledge and belief.

H. A. Carson, Jr.

Date Surveyed August 13, 1975
Registered Professional Engineer and/or Land Surveyor
Certificate No. 5063

