

UNITED STATES
DEPARTMENT OF THE INTERIOR
GEOLOGICAL SURVEY

API 30-039-21207

5. LEASE DESIGNATION AND SERIAL NO.

NM 03551

6. IF INDIAN, ALLOTTEE OR TRIBE NAME

7. UNIT AGREEMENT NAME

8. FARM OR LEASE NAME

Breech E

9. WELL NO.

51

10. FIELD AND POOL, OR WILDCAT

South Blanco-Chacra

11. SEC., T., R., M., OR BLK.
AND SURVEY OR AREA

Section 4 26N 6W

12. COUNTY OR PARISH 13. STATE

Rio Arriba

New Mex.

1a. TYPE OF WORK

DRILL ☒DEEPEN ☐PLUG BACK ☐

b. TYPE OF WELL

OIL
WELL ☐GAS
WELL ☒

OTHER

SINGLE
ZONE ☐MULTIPLE
ZONE ☒

2. NAME OF OPERATOR

Caulkins Oil Company

3. ADDRESS OF OPERATOR

Post Office Box 780, Farmington, New Mexico

4. LOCATION OF WELL (Report location clearly and in accordance with any State requirements.)*

At surface

1190 feet from the North and 990 feet from the West

At proposed prod. zone

Same

14. DISTANCE IN MILES AND DIRECTION FROM NEAREST TOWN OR POST OFFICE*

35 miles Southeast of Blanco, New Mexico

15. DISTANCE FROM PROPOSED*

LOCATION TO NEAREST
PROPERTY OR LEASE LINE, FT.
(Also to nearest drlg. unit line, if any)

1190

16. NO. OF ACRES IN LEASE

2240

18. DISTANCE FROM PROPOSED LOCATION*
TO NEAREST WELL, DRILLING COMPLETED,
OR APPLIED FOR, ON THIS LEASE, FT.

1980

19. PROPOSED DEPTH

4025

17. NO. OF ACRES ASSIGNED
TO THIS WELL

160

159.91

20. ROTARY OR CABLE TOOL

Rotary

21. ELEVATIONS (Show whether DF, RT, GR, etc.)

6540 Ground

22. APPROX. DATE WORK WILL START*

May 1, 1976

23.

PROPOSED CASING AND CEMENTING PROGRAM

SIZE OF HOLE	SIZE OF CASING	WEIGHT PER FOOT	SETTING DEPTH	QUANTITY OF CEMENT
12 3/4	8 5/8	24	100	Sufficient to circulate
7 7/8"	4 1/2	10.5	4025	Approx. 450 sacks.

It is proposed to drill well to approx. 4025'. 4 1/2" casing will be run to TD and cemented with sufficient cement to cover Alamo Sand. After cement sets 120 hrs. or more, casing will be perforated opposite Chacra Sand and then sand water fraced with approx. 50,000# sand. Bridge plug will be set above Chacra perforations and then Pictured Cliffs will be perforated and sand water fraced. Bridge plug will be drilled out then permanent type production packer will be set at approx. 3900'. 1 1/4" 10 rd. thd. IJ tubing will be run to production packer for Chacra production. 1" Non EUE 10 rd. thd. tubing will be run to top of Pictured Cliffs perforations.

A pressure operated double blowout preventor will be in use at all times while drilling below 100'.

IN ABOVE SPACE DESCRIBE PROPOSED PROGRAM: If proposal is to deepen or plug back, give data on present productive zone and proposed new productive zone. If proposal is to drill or deepen directionally, give pertinent data on subsurface locations and measured and true vertical depths. Give blowout preventer program, if any.

24.

SIGNED

Charles E. Dejeu

TITLE

Superintendent

DATE

April 2, 1976

(This space for Federal or State office use)

PERMIT NO.

APPROVAL DATE

APPROVED BY

TITLE

DATE

CONDITIONS OF APPROVAL, IF ANY:

*Obel**M*

APR 3 1976

*See Instructions On Reverse Side

NEW MEXICO OIL CONSERVATION COMMISSION
WELL LOCATION AND ACREAGE DEDICATION PLAT

Form C-102
Supersedes C-128
Effective 1-1-65

All distances must be from the outer boundaries of the Section.

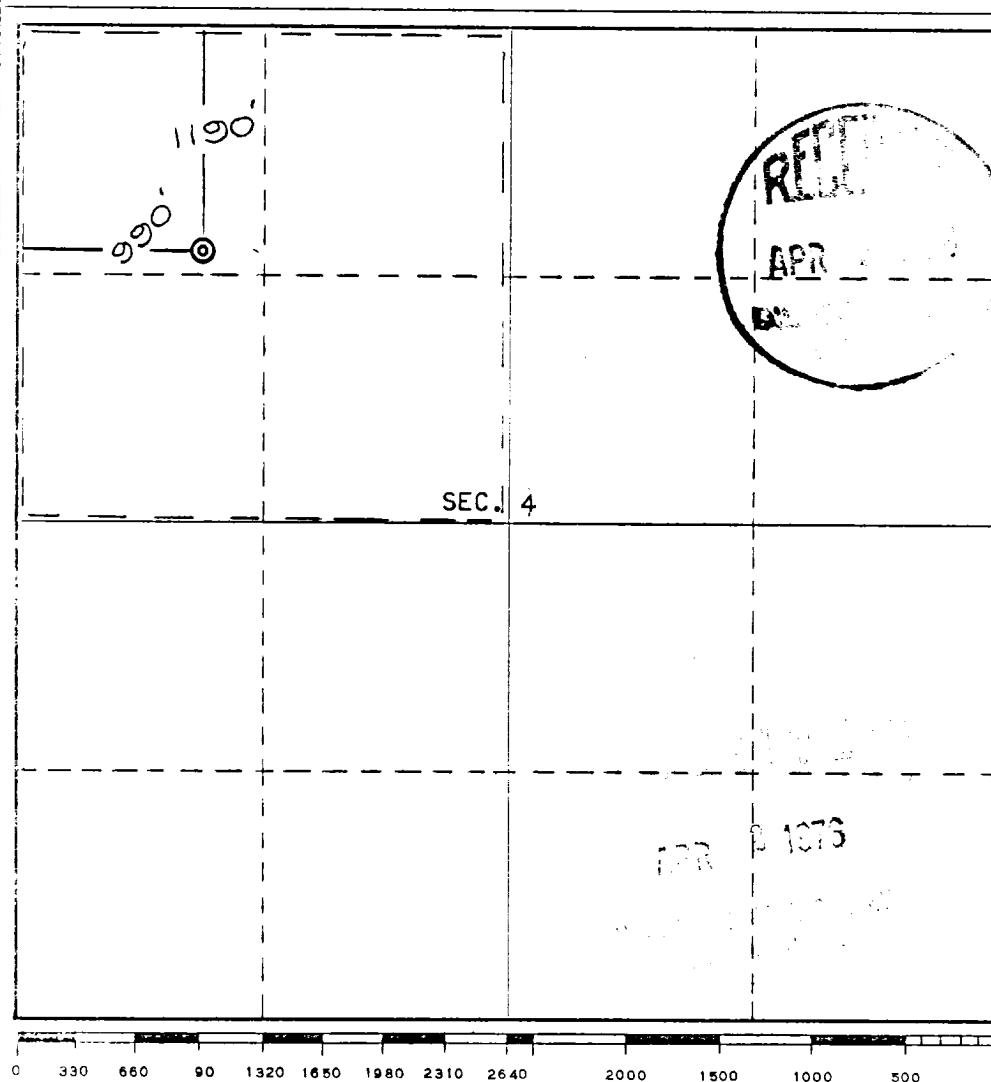
Operator Caulkins Oil Company			Lease NM 03551 Breech E		Well No. 51
Unit Letter D	Section 4	Township 26 North	Range 6 West	County Rio Arriba	
Actual Footage Location of Well: 1190 feet from the North line and 990 feet from the West line					
Ground Level Elev. 6540	Producing Formation Pictured Cliffs-Chacra	Pool pc. Under	Dedicated Acreage: 159.91 160 159.91 Acres		

1. Outline the acreage dedicated to the subject well by colored pencil or hachure marks on the plat below.
2. If more than one lease is dedicated to the well, outline each and identify the ownership thereof (both as to working interest and royalty).
3. If more than one lease of different ownership is dedicated to the well, have the interests of all owners been consolidated by communitization, unitization, force-pooling, etc?

☐ Yes ☐ No If answer is "yes," type of consolidation _____

If answer is "no," list the owners and tract descriptions which have actually been consolidated. (Use reverse side of this form if necessary.) _____

No allowable will be assigned to the well until all interests have been consolidated (by communitization, unitization, forced-pooling, or otherwise) or until a non-standard unit, eliminating such interests, has been approved by the Commission.



CERTIFICATION

I hereby certify that the information contained herein is true and complete to the best of my knowledge and belief.

Name
Charles E. Echhawk
Position

Superintendent

Company
Caulkins Oil Company

Date
April 2, 1976

STATE OF NEW MEXICO
I hereby certify that the well location shown on this plat was plotted from field notes of actual surveys made by me or under my supervision, and that the same are true and correct to the best of my knowledge and belief.
REGISTERED LAND SURVEYOR

Date Surveyed
March 22, 1976

Registered Professional Engineer and/or Land Surveyor

E.V. Echhawk
Certificate No. **3602**
E.V. Echhawk LS

CAULKINS OIL COMPANY
Post Office Box 780
Farmington, New Mexico

April 2, 1976

United States Dept. of the Interior
Geological Survey
Post Office Box 1809
Durango, Colorado 81301



Gentlemen:

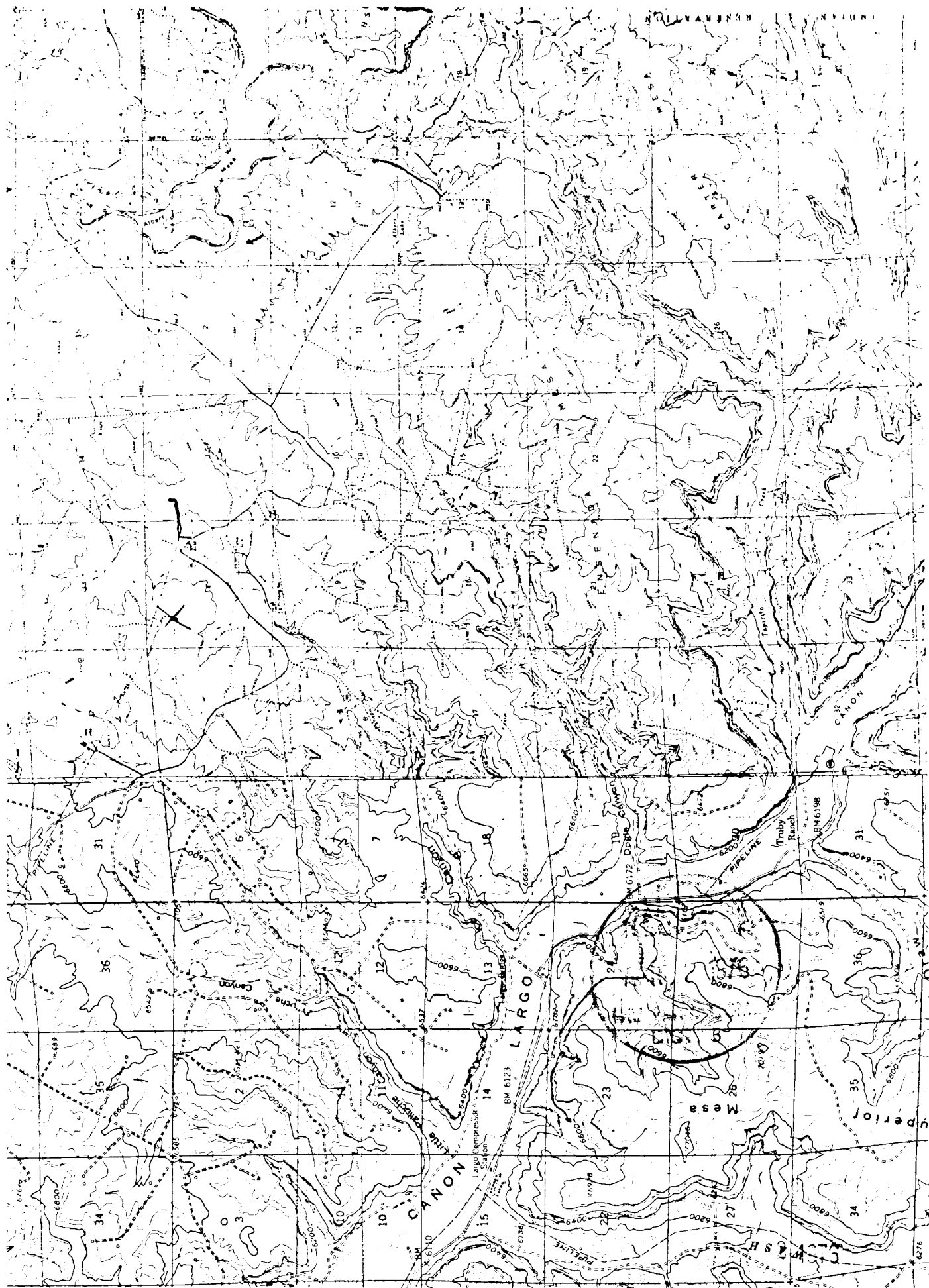
Following is our 12 point development plan for surface use on our well No. 51, located in NW 1/4 of section 4 26N 6W.

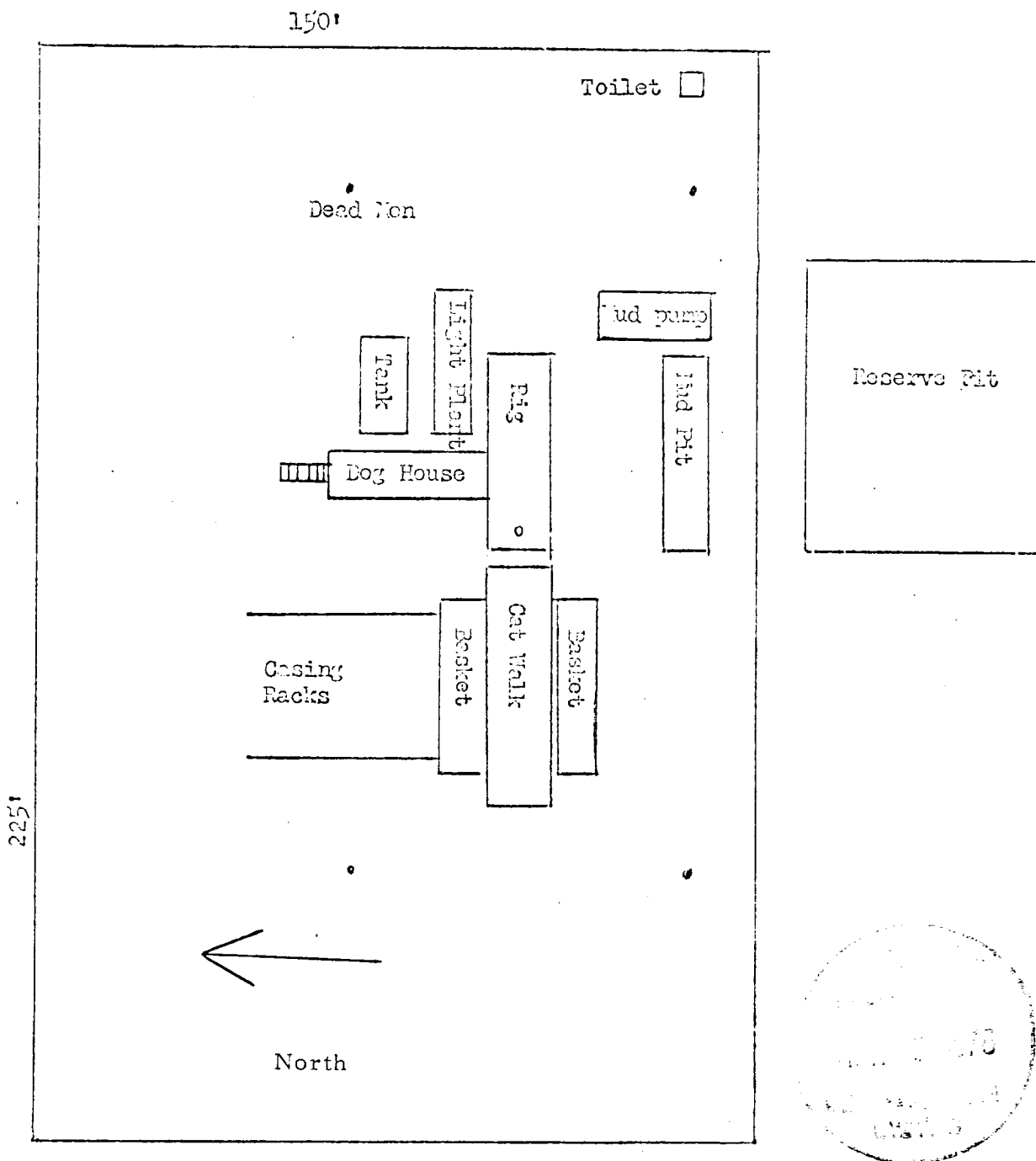
- (1) Existing roads now being used to service well in SW 1/4 section 33 27N 6W will be used.
- (2) (5) (8) 9) No new roads, tanks, airstrip or camp.
- (3) (4) See topo map.
- (6) Water will be hauled from Caulkins water hole in section 3 26N 6W.
- (7) All cuttings, trash, garbage and etc. will be confined to reserve pit.
- (10) Layout plat for location and pit attached.
- (11) Reserve pit will be leveled and cleaned up, then complete area reseeded.
- (12) This location to be built on area cleared for location in 1951.

Yours very truly.

Charles E. Cargill
Caulkins Oil Company

APR 2 1976





Scale - 33 1/3 feet per inch

Well Number 51

Located NW 1/4 Section 4 26N 6W

FEB 2 1976