

UNITED STATES
DEPARTMENT OF THE INTERIORGEOLOGICAL SURVEY *APT 30-039-21221*

APPLICATION FOR PERMIT TO DRILL, DEEPEN, OR PLUG BACK

1a. TYPE OF WORK

DRILL ☒DEEPEN ☐PLUG BACK ☐

b. TYPE OF WELL

OIL
WELL ☐GAS
WELL ☒

OTHER

SINGLE
ZONE ☐MULTIPLE
ZONE ☐

2. NAME OF OPERATOR

CONTINENTAL OIL COMPANY

3. ADDRESS OF OPERATOR

Box 460, Hobbs, N.M. 88240

4. LOCATION OF WELL (Report location clearly and in accordance with any State requirements.)*

At surface

960' FNL & 1690' FNL of SEC. 3

At proposed prod. zone

SAME

14. DISTANCE IN MILES AND DIRECTION FROM NEAREST TOWN DEPOSIT OFFICE*

10. DISTANCE FROM PROPOSED*

LOCATION TO NEAREST

PROPERTY OR LEASE LINE, FT.

(Also to nearest drig. unit line, if any)

18. DISTANCE FROM PROPOSED LOCATION*
TO NEAREST WELL, DRILLING, COMPLETED,
OR APPLIED FOR, ON THIS LEASE, FT.

21. ELEVATIONS (Show whether DF, RT, GR, etc.)

6601' GR.

23.

PROPOSED CASING AND CEMENTING PROGRAM

SIZE OF HOLE	SIZE OF CASING	WEIGHT PER FOOT	SETTING DEPTH	QUANTITY OF CEMENT
<i>12 1/4"</i>	<i>8 7/8"</i>	<i>24#</i>	<i>500'</i>	<i>360 SX. - CIRC.</i>
<i>7 7/8"</i>	<i>5 1/2"</i>	<i>7 1/2#</i>	<i>5650'</i>	<i>600 SX.</i>

IT IS PROPOSED TO DRILL A STRAIGHT HOLE TO
A T.D. OF 5650' & COMPLETE AS AN INFILL
MESA VERDE GAS WELL.

MUD PROGRAM: 0-500', FRESH WATER; 500-5650',
FRESH WATER GEL, 8.5-8.8#.

SEE ATTACHED FOR B.O.P. PROGRAM.

ACREAGE IS DEDICATED TO A GAS PURCHASER.

IN ABOVE SPACE DESCRIBE PROPOSED PROGRAM: If proposal is to deepen or plug back, give data on present productive zone and proposed new productive zone. If proposal is to drill or deepen directionally, give pertinent data on subsurface locations and measured and true vertical depths. Give blowout preventer program, if any.

24.

SIGNED

W.A. Butterfield

VALID

ADMIN. SUPERVISOR

DATE *5-10-76*

(This space for Federal or State office use)

PERMIT NO. _____

APPROVAL DATE _____

APPROVED BY _____

TITLE _____

DATE _____

CONDITIONS OF APPROVAL, IF ANY:

OK

*See Instructions On Reverse Side

USGS-DURANGO (6). EL PASO, EXXON, SRH, FILE

**NEW MEXICO OIL CONSERVATION COMMISSION
WELL LOCATION AND ACERAGE DEDICATION PLAT**

All distances must be from the outer boundaries of the Section

Operator CONTINENTAL OIL COMPANY			Lease AXI APACHE K		Well No 4-A
Unit Letter C	Section 3	Township 26 NORTH	Range 5 WEST	County RIO ARriba	

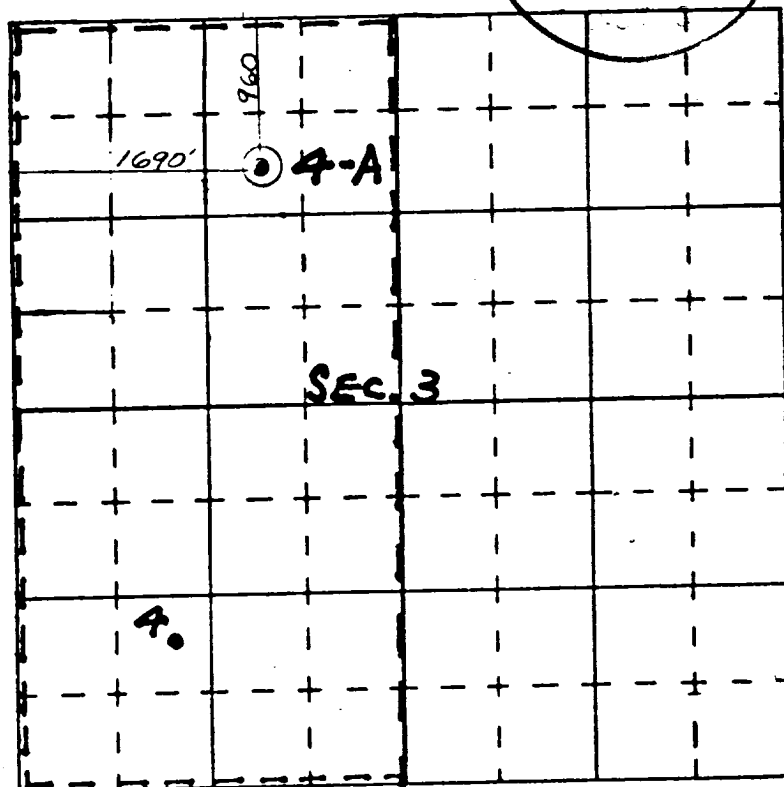
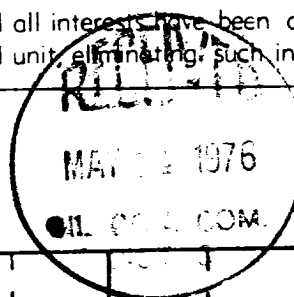
Actual Footage Location of Well:
 960 feet from the **NORTH** line and 1690 feet from the **WEST** line
 Ground Level Elev. **6601** Producing Formation **MEJA VERDE BLANCO MESA VERDE** Dedicated Acreage **319.80** Acres

1. Outline the acreage dedicated to the subject well by colored pencil or hachure marks on the plat below.
2. If more than one lease is dedicated to the well, outline each and identify the ownership thereof (both as to working interest and royalty).
3. If more than one lease of different ownership is dedicated to the well, have the interests of all owners been consolidated by communitization, unitization, force-pooling, etc?

() Yes () No If answer is "yes," type of consolidation

If answer is "no," list the owners and tract descriptions which have actually consolidated. (Use reverse side of this form if necessary.)

No allowable will be assigned to the well until all interests have been consolidated (by communitization, unitization, forced-pooling, or otherwise) or until a non standard unit, eliminating such interests, has been approved by the Commission.



CERTIFICATION

I hereby certify that the information contained herein is true and complete to the best of my knowledge and belief.

Name Wm. A. Duhonfield
 Position ADMIN. SUPERV.
 Company Continental Oil Co.
 Date 5-10-76

I hereby certify that the well location shown on this plat was plotted from field notes of actual surveys made by me or under my supervision, and that the same is true and correct to the best of my knowledge and belief.

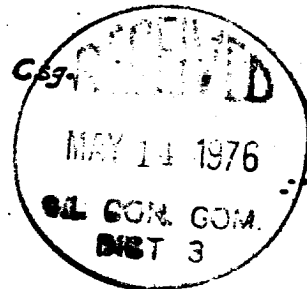
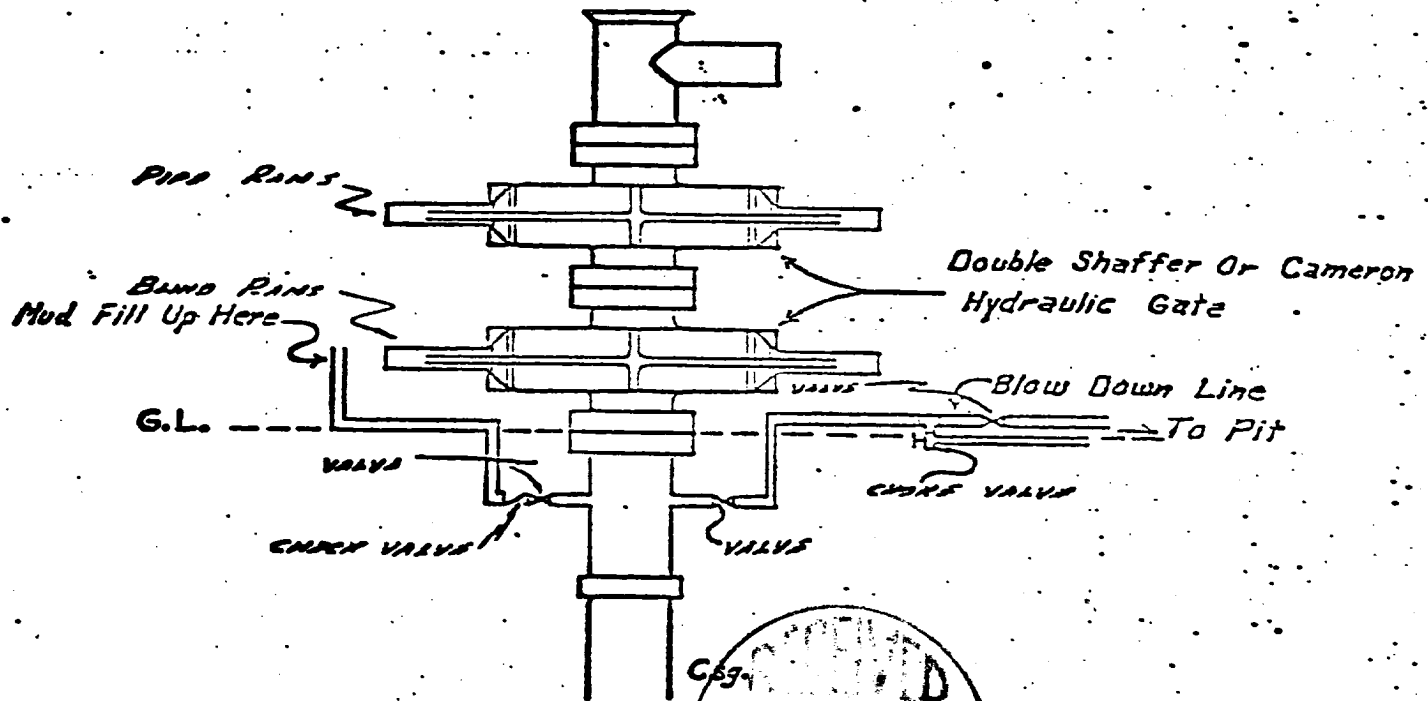
Date Surveyed 30 April, 1976
James P. Leese
 Registered Professional Engineer
 and/or Land Surveyor

James P. Leese

1463
 Certificate No.

AXI APACHE K-4A

CONTINENTAL OIL COMPANY Blow-out Preventer Specifications



NOTE:

Manual and hydraulic controls with closing unit no less than 75' from wall head.

Development Plan For Surface Use

AXI APACHE K-4A

1. Existing roads including location of the exit from the main highway

See Attached Map

2. Planned access roads

See Below and Attached Map

- (a) Length and width of new road

**LOCATION IS BESIDE
EXISTING ROAD.**

- (b) Roads may be altered at the

discretion of the Jicarilla
Apache Tribe and will be
constructed and maintained
according to their specifications.

3. Location of existing wells

See Attached Map

4. Lateral roads to well location

See Attached Map

5. Location of tank batteries and flowlines - **GAS PURCHASER WILL LAY LINES.**

See Attached Map

6. Location and type of water supply

☒ Water will be hauled to location from **TAPACITO WASH**.
() See attached map for location of proposed water lines.

7. Methods for handling waste disposal

All litter and scrap material will be disposed of by burying in a trash
pit with a minimum cover of 24 inches of dirt.

8. and 9. Location of camps and airstrips

There are no camps or airstrips contemplated to serve this lease.

10. Location of layout to include position of the rig, mud tanks, reserve
pits, burn pits, pipe racks, etc.

See Below and Attached plat

- (a) Size of drilling pad

160' X 200'

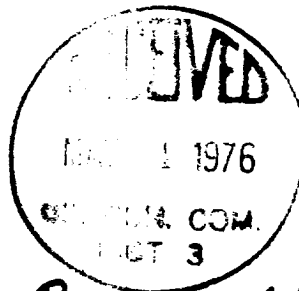
- (b) Drilling pad ☒ Compacted

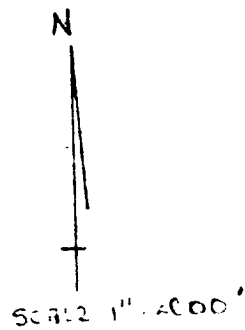
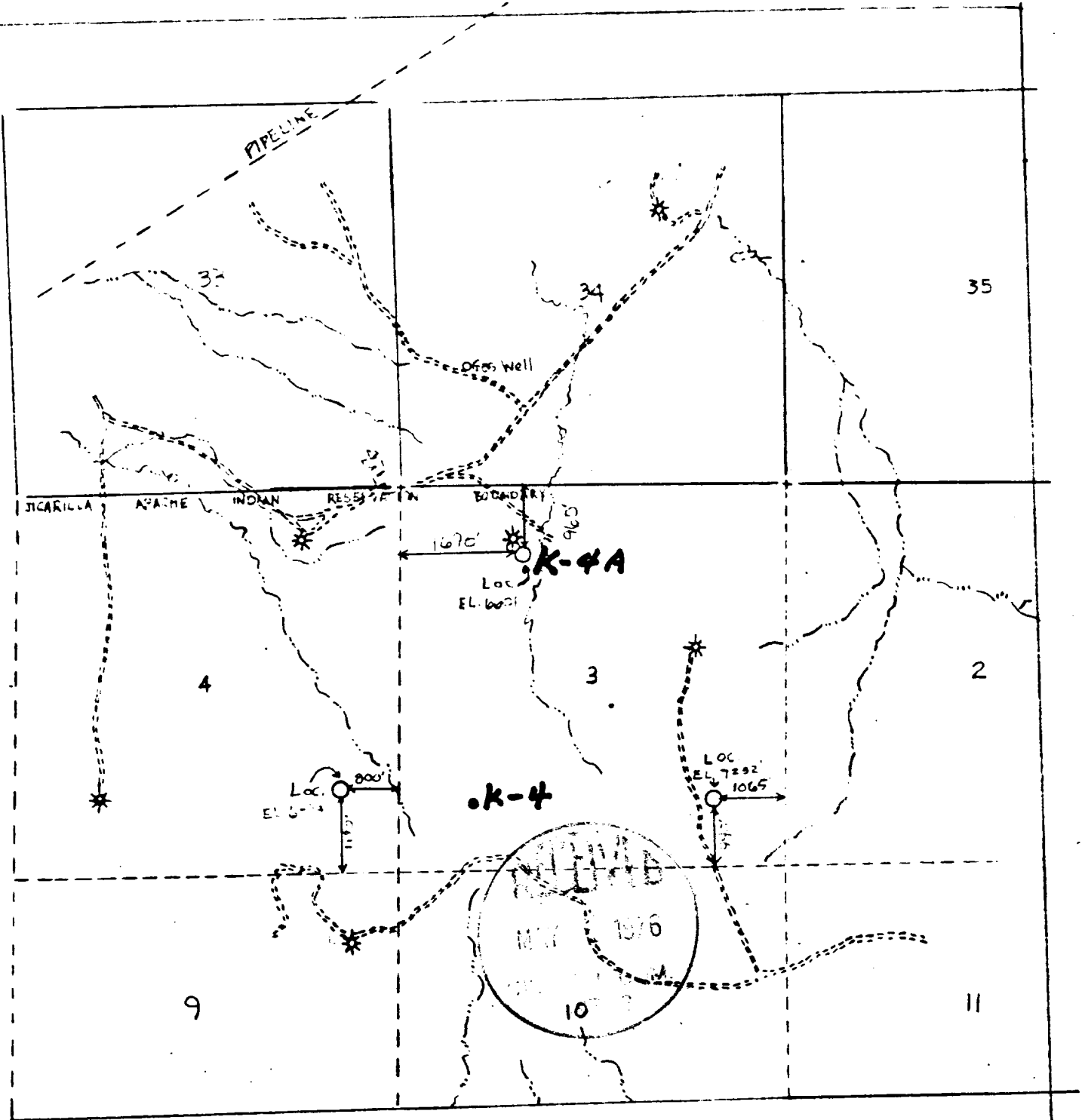
11. Plans for restoration of the surface

Surface will be levelled and properly conditioned as required by USGS
after consulting with proper surface managing agency.

12. Other information that may be used in evaluating the impact on environment

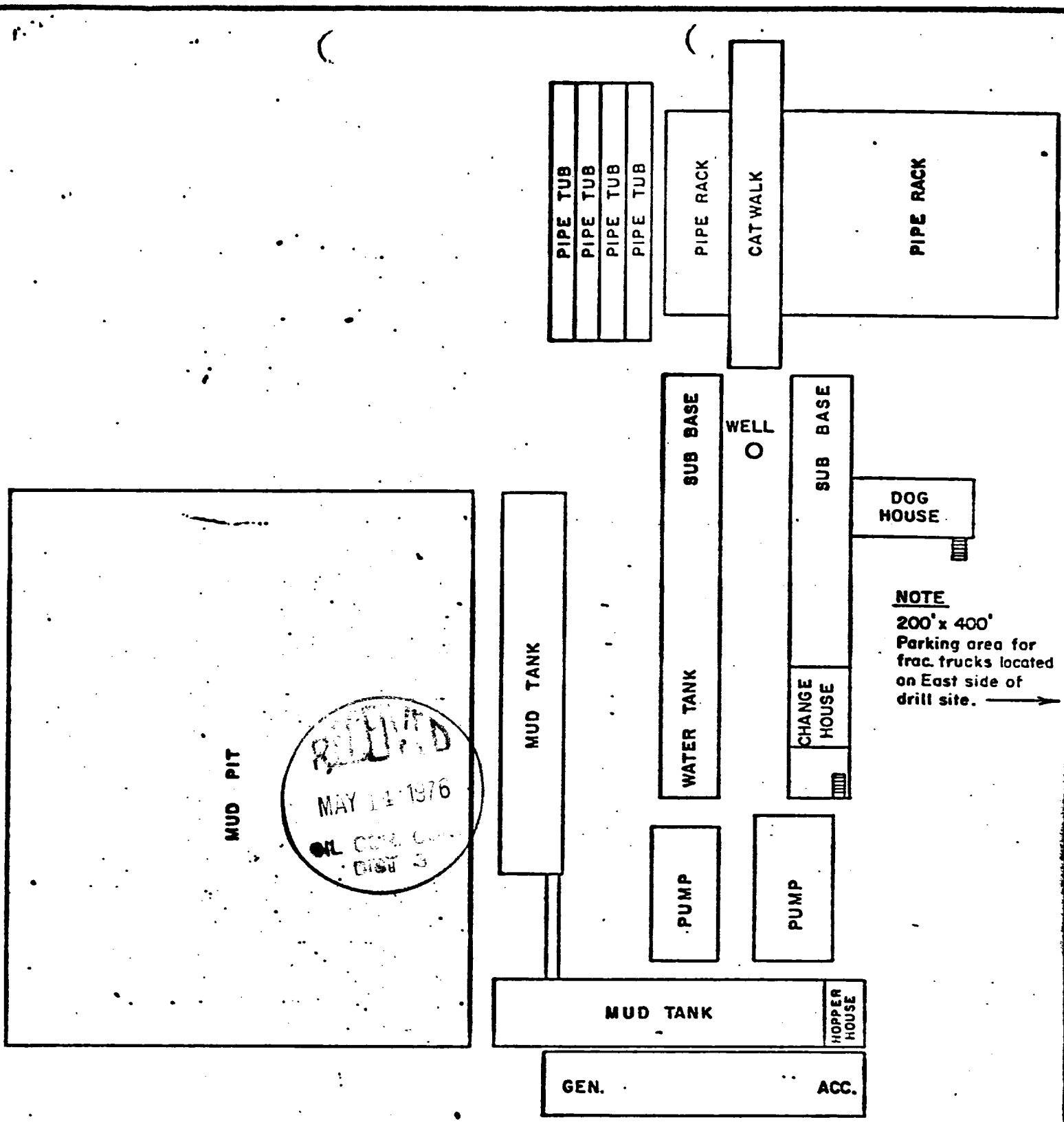
Necessary precautions will be taken to prevent pollution of ponds, streams
or other major water sheds which may be located in this area, and also to
protect all vegetation.





VICINITY MAP FOR
CONTINENTAL OIL COMPANY
SHOWING WELL LOCATIONS IN THE
NW 1/4 AND SE 1/4 OF SECTION 3, T26N,
R2W AND SE 1/4 OF SECTION 4, T26N,
R2W, NMPM, SAN JUAN CO., NEW MEXICO
SCALE: 1" = 24000 DATE: 3 MAY 1976
SAN JUAN ENGINEERING CO.
FARMINGTON, NEW MEXICO

AND ADJACENT K-4A



APPROX. RIG SITE DIMENSIONS
160' x 200'

CONTINENTAL OIL COMPANY
PRODUCTION DEPARTMENT
Casper, Wyoming



RIG LAYOUT

AXI APACHE K-4A

Engineer: T. F. Barnes

Draftsman: B.S.

Date: 1-4-73