

UNITED STATES
DEPARTMENT OF THE INTERIOR

GEOLOGICAL SURVEY

API 30-039-21238

APPLICATION FOR PERMIT TO DRILL, DEEPEN, OR PLUG BACK

1a. TYPE OF WORK

DRILL ☒DEEPEN ☐PLUG BACK ☐

b. TYPE OF WELL

OIL
WELL ☐GAS
WELL ☒

OTHER

SINGLE
ZONE ☒MULTIPLE
ZONE ☐

2. NAME OF OPERATOR

Mobil Oil Corporation

3. ADDRESS OF OPERATOR

P. O. Box 633, Midland, Texas 79701

4. LOCATION OF WELL (Report location clearly and in accordance with any State requirements.)*

At surface

1190' FNL & 790' FWL, Sec. 11, T26N, R3W

At proposed prod. zone

Same as Surface

14. DISTANCE IN MILES AND DIRECTION FROM NEAREST TOWN OR POST OFFICE*

10. DISTANCE FROM PROPOSED*

LOCATION TO NEAREST
PROPERTY OR LEASE LINE, FT.
(Also to nearest drlg. unit line, if any)

790

16. NO. OF ACRES IN LEASE

2530.72

17. NO. OF ACRES ASSIGNED
TO THIS WELL

w/ 320 (2 Wells)

18. DISTANCE FROM PROPOSED LOCATION*
TO NEAREST WELL, DRILLING, COMPLETED,
OR APPLIED FOR, ON THIS LEASE, FT.

3106.5'

19. PROPOSED DEPTH

6500'

20. ROTARY OR CABLE TOOLS

Rotary

21. ELEVATIONS (Show whether DF, RT, GR, etc.)

7056' - Ground

22. APPROX. DATE WORK WILL START*

As soon as possible

23.

PROPOSED CASING AND CEMENTING PROGRAM

| SIZE OF HOLE | SIZE OF CASING | WEIGHT PER FOOT | SETTING DEPTH | QUANTITY OF CEMENT |
|--------------|----------------|-----------------|---------------|--------------------------|
| 12-1/4" | 8-5/8" | 20# - Misco | 0 - 300' | (1) Circulate to Surface |
| 7-7/8" | 4-1/2" | 9.5# - K-55 | 300' - 6500' | (2) Circulate to Surface |

CEMENTING PROGRAM

- (1) Class B Cement containing 2% CaCl₂
- (2) Circulate in two stages using light weight filler cement in the lead slurry of each stage and tail in w/neat cement to cover pay zone.

MUD PROGRAM

| Depth | Type of Mud | Weight | Viscosity | PH | Water Loss |
|------------|------------------|-----------|-----------|----|------------|
| 0 - 300' | Spud | | | | |
| 300'-6500' | Fresh Water Gell | 8.8 - 9.2 | 30-50 | 9+ | 10 cc |

BLOWOUT PREVENTER PROGRAM ATTACHED

Gas is dedicated
IN ABOVE SPACE DESCRIBE PROPOSED PROGRAM: If proposal is to deepen or plug back, give data on present productive zone and proposed new productive zone. If proposal is to drill or deepen directionally, give pertinent data on subsurface locations and measured and true vertical depths. Give blowout preventer program, if any.

24.

SIGNED

A. D. Bond

A. D. Bond

TITLE

Proration Staff Assistant

DATE

May 24, 1976

(This space for Federal or State office use)

PERMIT NO.

APPROVED BY

CONDITIONS OF APPROVAL, IF ANY:

Chal

TITLE

APPROVAL DATE

JUN 3 1976

OIL CON. COM.
DIST 3

DATE

*See Instructions On Reverse Side

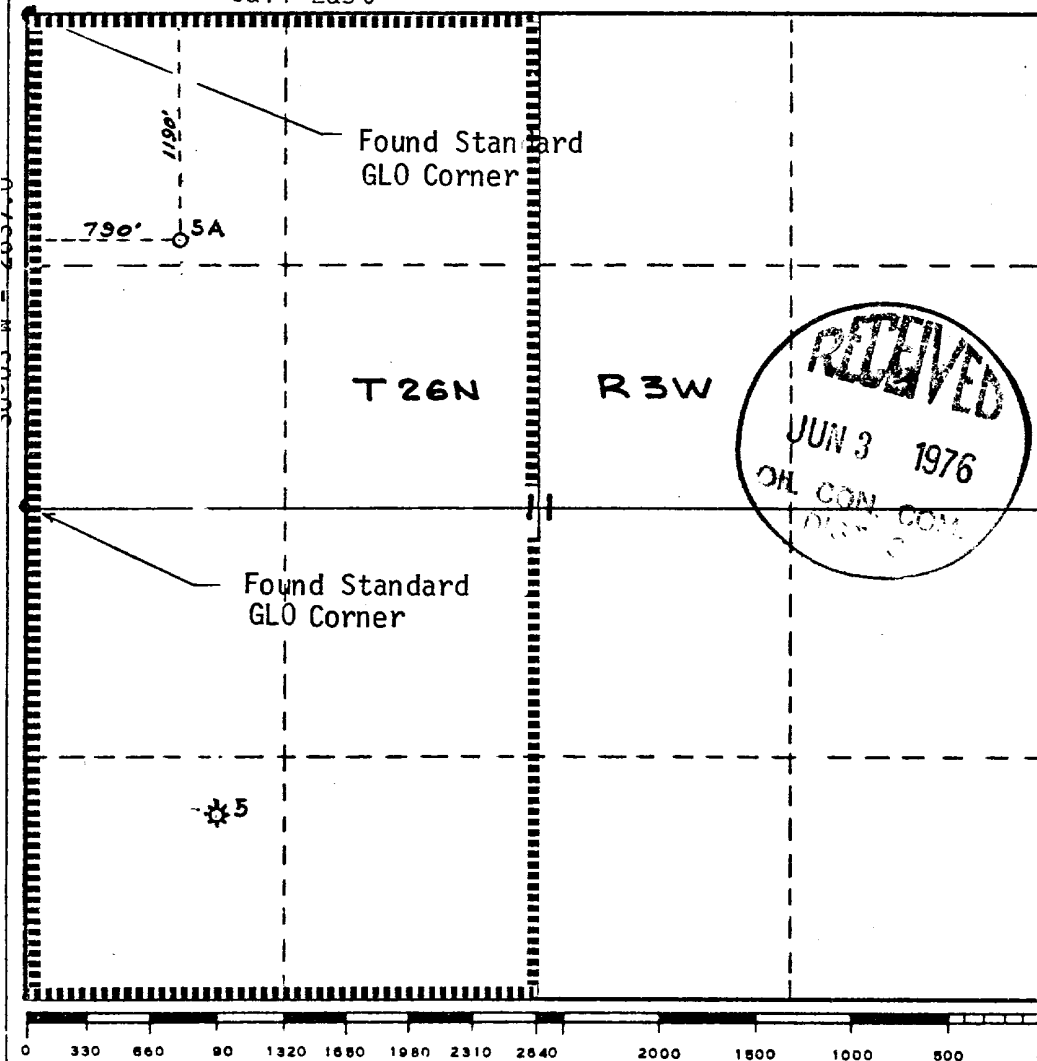
**NEW MEXICO OIL CONSERVATION COMMISSION
WELL LOCATION AND ACREAGE DEDICATION PLAT**

Form C-102
Supersedes C-128
Effective 1-1-65

All distances must be from the outer boundaries of the Section.

| | | | | | |
|--|---|---|---|-----------------------------|------------------------|
| Operator Mobil Oil Corporation | | | Lease Jicarilla H | | Well No. 5-A |
| Unit Letter D | Section 11 | Township 26N | Range 3W | County Rio Arriba | |
| Actual Footage Location of Well: | | | | | |
| 1190 feet from the North line and | | 790 feet from the West line | | | |
| Ground Level elev. 7056 | Producing Formation Mesaverde | Pool Blanco Mesaverde | Dedicated Acreage: W/ 320 (2 wells) Acres | | |
| <p>1. Outline the acreage dedicated to the subject well by colored pencil or hachure marks on the plat below.</p> <p>2. If more than one lease is dedicated to the well, outline each and identify the ownership thereof (both as to working interest and royalty).</p> <p>3. If more than one lease of different ownership is dedicated to the well, have the interests of all owners been consolidated by communitization, unitization, force-pooling, etc?</p> <p><input type="checkbox"/> Yes <input type="checkbox"/> No If answer is "yes," type of consolidation _____</p> <p>If answer is "no," list the owners and tract descriptions which have actually been consolidated. (Use reverse side of this form if necessary.) _____</p> <p>No allowable will be assigned to the well until all interests have been consolidated (by communitization, unitization, forced-pooling, or otherwise) or until a non-standard unit, eliminating such interests, has been approved by the Commission.</p> | | | | | |

Call-East



CERTIFICATION

I hereby certify that the information contained herein is true and complete to the best of my knowledge and belief.

A. D. Bond

Name **A. D. Bond**

Position **Proration Staff Assistant**

Company **Mobil Oil Corporation**

Date **May 24, 1976**

I hereby certify that the location shown on this plat was plotted from field notes of actual surveys made by me or under my supervision and that the same is true and correct to the best of my knowledge and belief.

H. A. Carson Jr

Date Surveyed

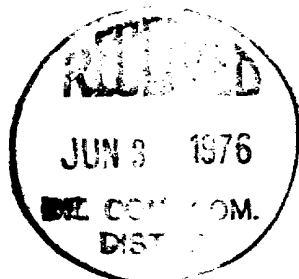
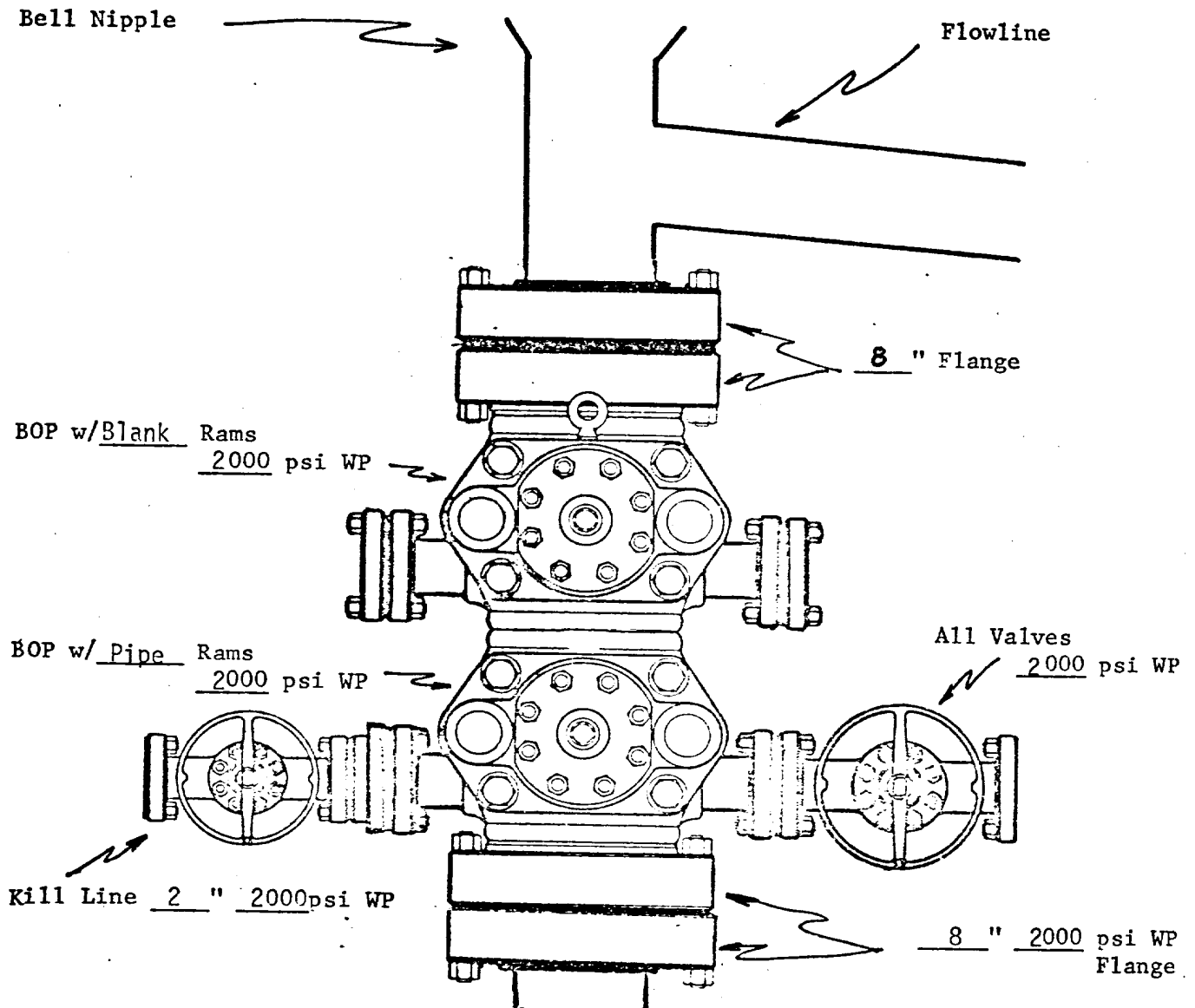
July 31, 1975

Registered Professional Engineer and/or Land Surveyor

H. A. Carson

Certificate No. **5063**

PROPOSED BOP STACK
8-5/8 " CASING



MOBIL OIL CORPORATION
 WELL Jicarilla H, Well #5-A
Rio Arriba COUNTY,
New Mexico

Handwritten initials

PROPOSED CHOKE MANIFOLD
(MINIMUM REQUIREMENTS)
8-5/8 " CASING STRING

2" Adjustable Choke

To Separator

3000 psi gage

2" Cross

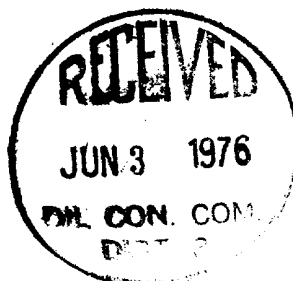
To Blue Line

Valve on
Bailing Spool

All Valves- " - 2000 psi WP

2" Positive Choke

To Separator



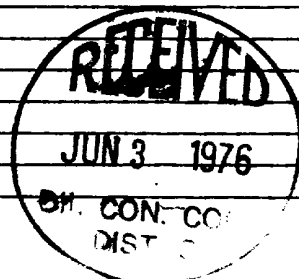
MOBIL OIL CORP.
WELL NAME & NO. Jicarilla H
Well #5-A
Rio Arriba COUNTY, New Mexico

MOBIL OIL CORPORATION
P. O. Box 633
Midland, Texas 79701

TWELVE-POINT SURFACE USE PLAN FOR
DRILLING OPERATIONS ON FEDERAL LEASES

Lease Name: Jicarilla "H" Well No. 5-A
Well Location: 1190' FNL & 790' FWL, Sec. 11, T26N, R3W
Field: Blanco Mesaverde
County: Rio Arriba State: New Mexico

1. * Existing roads including location of the exit from the main highway.
2. * Planned access roads.
3. * Location of wells.
4. * Lateral roads to well location.
5. * Location of tank batteries and flow lines.
6. Location and types of water supply: Water will be trucked to well site.
7. Methods for handling waste disposal: Waste will be burned, buried and/or hauled from the well site.
8. Location of camps: (None)
9. Location of air strips: (None)
10. Location layout to include position or rig, mud tanks, reserve pits, burn pits, pipe racks, etc.: (See attached diagram of proposed rig layout)
11. Plans for restoration of the surface: Pits will be backfilled and levelled to original grade and left for return of natural vegetation. The pad will be left in place for well servicing.
12. Any other information that may be used in evaluating the impact on environment: Location falls in sage brush pasture with snake weed and rabbit brush.



* Shown on attached map.

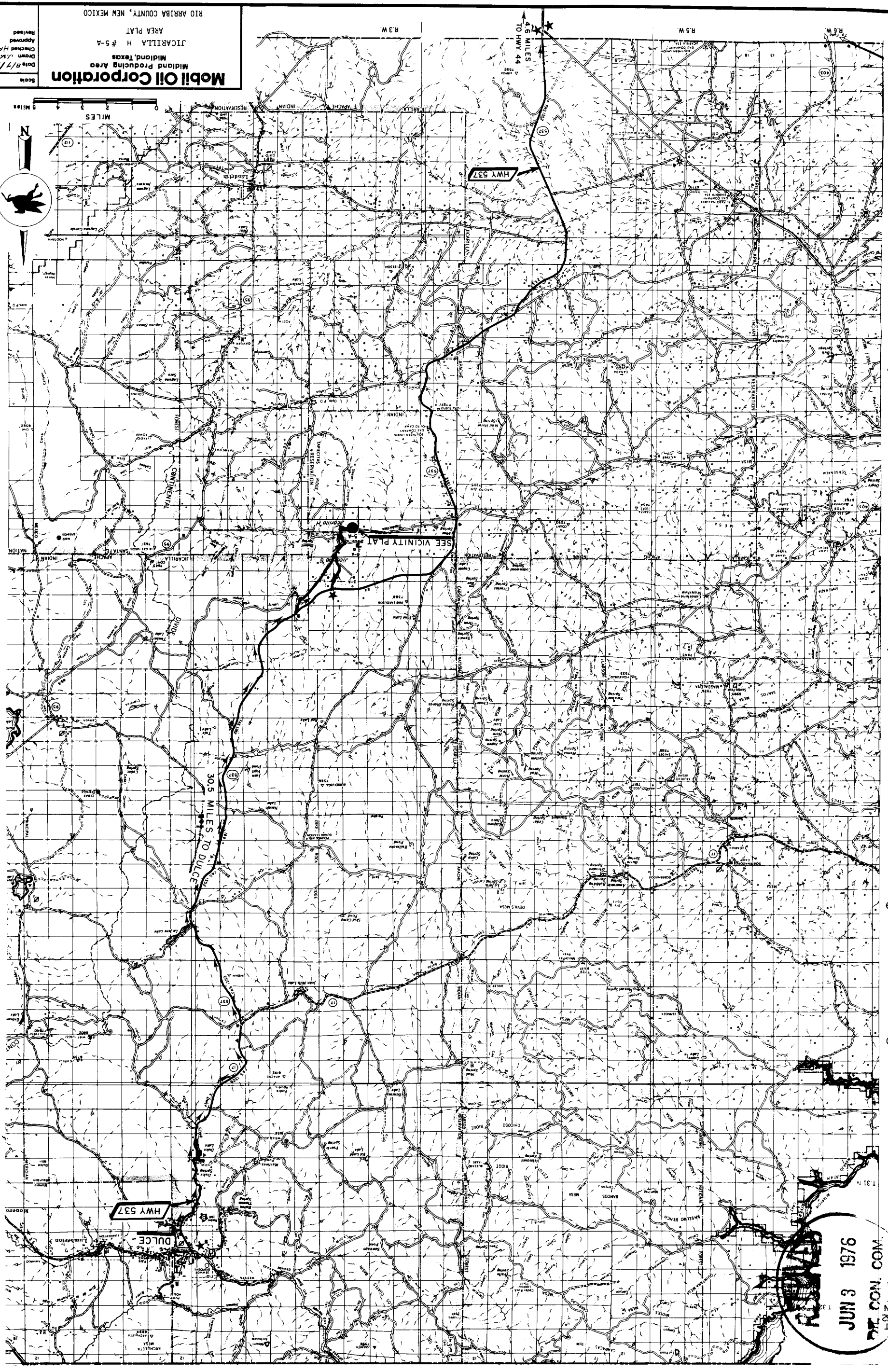


Y - Door to East

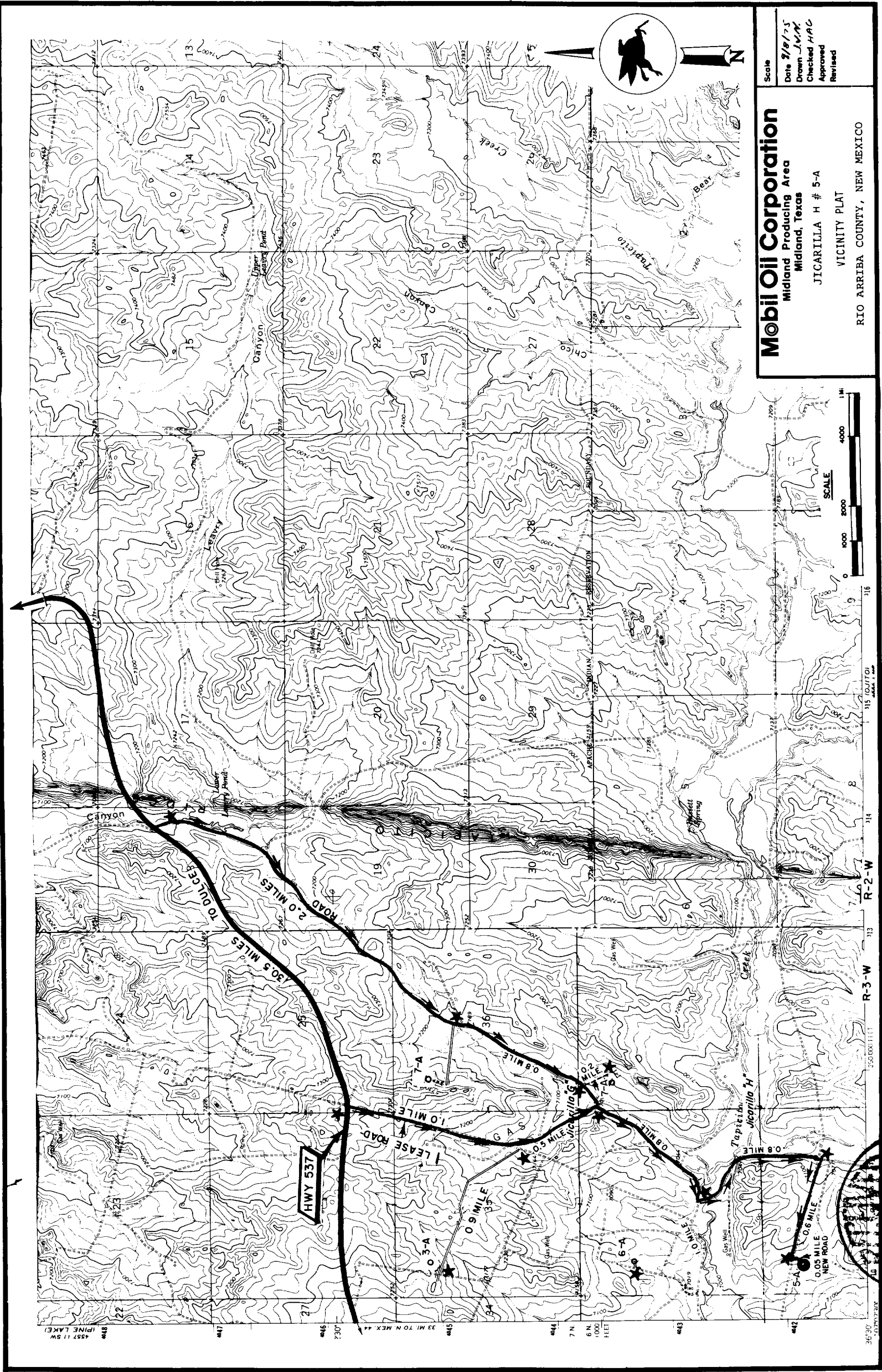
RECEIVED
JUN 3 1976
NO. 5
OIL CON. COM
DIST. 3

| | | | | | |
|------------------------|--|--------------|--|------------|--|
| NO. | | DATE BY | | ALTERATION | |
| STANDARD LOCATION PLAN | | | | | |
| 5000'-7000' DEEP WELLS | | | | | |
| ON STABLE SOIL | | | | | |
| MOBIL OIL CORPORATION | | | | | |
| HOUSTON E&P DIVISION | | | | | |
| DRAWN DLT | | SCALE 1"=40' | | DWG. NO. | |
| CHECKED | | DATE 2-14-62 | | A-322 | |

Mobil Oil Corporation
Midland Producing Area
Midland, Texas
JICARILLA H #5-A
AREA PLAT
RIO ARriba COUNTY, NEW MEXICO
Scale
Date 8/7/75
Drawn J.K.M.
Checked H.P.C.
Approved
Revised



RECEIVED
JUN 3 1976
P.C. CON. COM.



Mobil Oil Corporation
Midland Producing Area
Midland, Texas
JICARILLA H # 5-A
VICINITY PLAT
RIO ARriba COUNTY, NEW MEXICO

Scale
Date 3/18/75
Drawn J.V.N.
Checked H.A.C.
Approved
Revised



JUN 3 1976

Mobil Oil Corporation

P. O. BOX 633
MIDLAND, TEXAS 79701

May 25, 1976

United States Geological Survey (6)
Durango District
P. O. Box 1809
Durango, Colorado 81301

Attention: Mr. Jerry W. Long

DRILLING APPLICATION
MOBIL OIL CORPORATION'S
JICARILLA "H", WELL #5-A
BLANCO MESAVERDE POOL
RIO ARriba COUNTY, NEW MEXICO

Gentlemen:

Mobil Oil Corporation respectfully requests authority to drill the subject well. Six copies each of the following documents are submitted in support of this request.

1. Form 9-331-C, Application to Drill
2. Diagrammatic Sketch of Blowout Preventer Program
3. Twelve Point Surface Use Plan, which includes:
 - (a) a rig layout and location plan
 - (b) an area map
 - (c) a vicinity plat showing roads
4. New Mexico Oil Conservation Commission Form C-102
(Acreage Dedication Plat)

Should additional information be required, please advise.

Yours very truly,



J. A. Morris
Regulatory Engineering Supervisor

ADBond/cs
Attachments

