

District I
P O Box 1980, Hobbs, NM

District II
P O Drawer DD, Artesia, NM 88221

District III
1000 Rio Brazos Rd, Aztec, NM 87410

Denny E. Faust
DEPUTY OIL & GAS INSPECTOR

JUN 23 1998

State of New Mexico
Energy, Minerals and Natural Resources Department

OIL CONSERVATION DIVISION

2040 South Pacheco Street
Santa Fe, New Mexico 87505

SUBMIT 1 COPY TO
APPROPRIATE
DISTRICT OFFICE
AND 1 COPY TO
SANTA FE OFFICE

PIT REMEDIATION AND CLOSURE REPORT

Operator: PNM Gas Services (Caulkins) **Telephone:** 324-3764

Address: 603 W. Elm Street Farmington, NM 87401

Facility or Well Name: Breach D #137

Location: Unit D Sec 11 T 26 N R 6 W County Rio Arriba

Pit Type: Separator ☒ Dehydrator ☐ Other ☐

Land Type: BLM ☒ State ☐ Fee ☐ Other ☐

Pit Location: Pit dimensions: length 20 width 20 depth 3

(Attach diagram) **Reference:** wellhead ☒ other ☐

Footage from reference: 55'

Direction from reference: 85 Degrees ☐ East ☒ North
of ☒ West ☐ South

Depth to Ground Water: Less than 50 feet (20 points)
50 feet to 99 feet (10 points)
Greater than 100 feet (0 points) 0

(Vertical distance from contaminants to
seasonal high water elevation of ground
water)

Wellhead Protection Area: Yes (20 points)
No (0 points) 0

(Less than 200 feet from a private
domestic water source, or, less than 1,000
feet from all other water sources)

RECEIVED
FEB - 3 1998
OIL CON. DIV.
DIST. 3

Distance to Surface Water: Less than 200 feet (20 points)
200 feet to 1,000 feet (10 points)
Greater than 1,000 feet (0 points) 0

(Horizontal distance to perennial lakes,
ponds, rivers, streams, creeks, irrigation
canals and ditches)

RANKING SCORE (TOTAL POINTS): 0

Breach D #137

Date Remediation Started: 9/9/97

Date Completed: 9/9/97

Remediation Method: Excavation ☒ Approx. Cubic Yard 267

(Check all appropriate sections)

Landfarmed ☒ Amount Landfarmed (cubic yds) 267

Other

Remediation Location: Onsite ☒ Offsite

(i.e., landfarmed onsite, name and location of offsite facility)

Backfill Material Location:

General Description of Remedial Action:

Excavated contaminated soil to a pit size of 20' X 20' X 18' and landfarmed soil onsite within a bermed area at a depth of 6" to 12". Soil was aerated by disking/plowing until soil met regulatory levels.

Ground Water Encountered: No ☒ Yes ☐ Depth

Final Pit Closure Sampling:

Sample Location 5 pt. composite - 4 side walls and center of pit bottom.

(if multiple samples, attach sample result and diagram of sample locations and depths.)

Sample depth 15' walls and 18' bottom.

Sample date 9/9/97 Sample time 1:00:00 PM

Sample Results

Benzene (ppm) 0.0020

Total BTEX (ppm) 0.1740

Field headspace (ppm)

TPH (ppm) < 5.00 Method 8015A

Vertical Extent (ft) Risk Assessment form attached Yes No

Ground Water Sample: Yes No ☒ (If yes, see attached Groundwater Site Summary Report)

I HEREBY CERTIFY THAT THE INFORMATION ABOVE IS TRUE AND COMPLETE TO THE BEST OF MY KNOWLEDGE AND MY BELIEF

DATE January 27, 1998

SIGNATURE

PRINTED NAME AND TITLE Denver Bearden
Administrator III

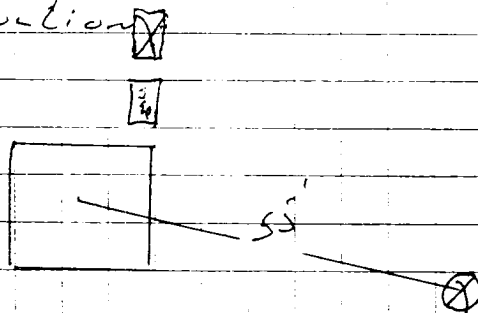
Breach D #137

9/9/97

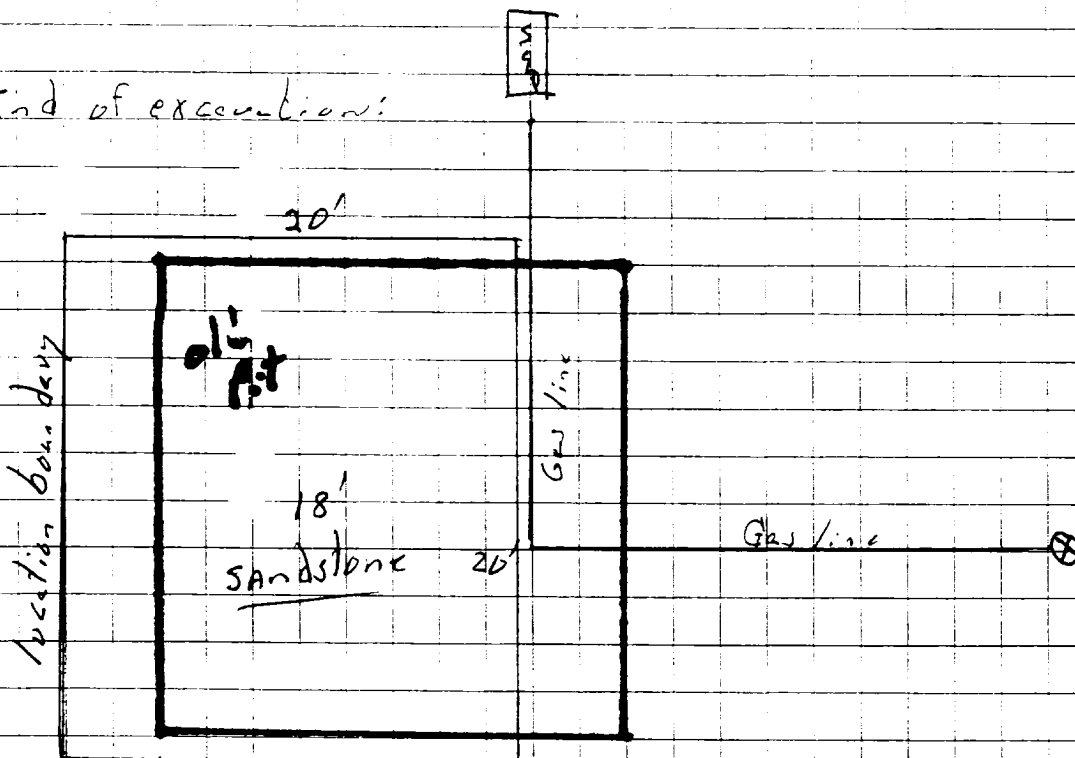
Caulkins D:1

Sec. 11, 26N, 6W, D

start of excavation



End of excavation:



OFF: (505) 325-5667



LAB: (505) 325-1556

ANALYTICAL REPORT

Attn: *Denver Bearden*
Company: *PNM Gas Services*
Address: *603 W. Elm*
City, State: *Farmington, NM 87401*

Date: *16-Sep-97*
COC No.: *5685*
Sample No.: *16110*
Job No.: *2-1000*

Project Name: *PNM Gas Services - Breech D #137*
Project Location: *9709091300; Composite, 4 Walls @ 15' and Bottom @ 18'*
Sampled by: *GC* Date: *9-Sep-97* Time: *13:00*
Analyzed by: *DC/HR* Date: *15-Sep-97*
Sample Matrix: *Soil*

Laboratory Analysis

Parameter	Results as Received	Unit of Measure	Limit of Quantitation	Unit of Measure
<i>Diesel Range Organics (C10 - C28)</i>	ND	mg/kg	5	mg/kg

ND - Not Detected at Limit of Quantitation

Quality Assurance Report

DRO QC No.: 0555-STD


Continuing Calibration Verification

Parameter	Method Blank	Unit of Measure	True Value	Analyzed Value	RPD	RPD Limit
<i>Diesel Range (C10 - C28)</i>	ND	ppm	200	197	1.5	15%

Matrix Spike

Parameter	1- Percent Recovered	2 - Percent Recovered	Limit	RPD	RPD Limit
<i>Diesel Range (C10-C28)</i>	100	94	(70-130)	6	20%

Method - *SW-846 EPA Method 8015A mod. - Nonhalogenated Volatile Hydrocarbons by Gas Chromatography*

Approved by: 
Date: *9/16/97*

P.O. BOX 2606 • FARMINGTON, NM 87499

OFF: (505) 325-5667



LAB: (505) 325-1556

ANALYTICAL REPORT

Attn: *Denver Bearden*
Company: *PNM Gas Services*
Address: *603 W. Elm*
City, State: *Farmington, NM 87401*

Date: *17-Sep-97*
COC No.: *5685*
Sample No.: *16110*
Job No.: *2-1000*

Project Name: *PNM Gas Services - Breech D #137*
Project Location: *9709091300; Walls @ 15' and Bottom @ 18'*
Sampled by: *GC* Date: *9-Sep-97* Time: *13:00*
Analyzed by: *DC* Date: *11-Sep-97*
Sample Matrix: *Soil*

Laboratory Analysis

Parameter	Results as Received	Unit of Measure	Limit of Quantitation	Unit of Measure
<i>Benzene</i>	<i>2</i>	<i>ug/kg</i>	<i>1</i>	<i>ug/kg</i>
<i>Toluene</i>	<i>6</i>	<i>ug/kg</i>	<i>1</i>	<i>ug/kg</i>
<i>Ethylbenzene</i>	<i>16</i>	<i>ug/kg</i>	<i>1</i>	<i>ug/kg</i>
<i>m,p-Xylene</i>	<i>127</i>	<i>ug/kg</i>	<i>1</i>	<i>ug/kg</i>
<i>o-Xylene</i>	<i>23</i>	<i>ug/kg</i>	<i>1</i>	<i>ug/kg</i>
<i>TOTAL</i>	<i>174</i>	<i>ug/kg</i>		

ND - Not Detected at Limit of Quantitation

Method - SW-846 EPA Method 8020A Aromatic Volatile Organics by Gas Chromatography

Approved by: *[Signature]*
Date: *9/17/97*

11
N

9-29-97-@1030

Breesh D # 137

Caulkins

(D) 11-26N-6W

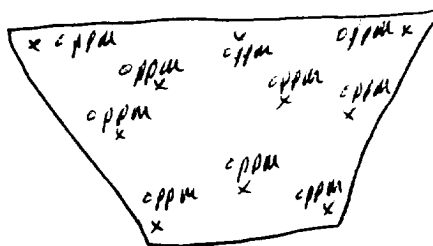
Rio Arriba

Sample # 9709291030

Landform Field Headspace: 5 ppm

MH

30



2" - 10"

OFF: (505) 325-5667



LAB: (505) 325-1556

ANALYTICAL REPORT

Attn: *Denver Bearden*
Company: *PNM Gas Services*
Address: *603 W. Elm*
City, State: *Farmington, NM 87401*

Date: *2-Oct-97*
COC No.: *5675*
Sample No.: *16442*
Job No.: *2-1000*

Project Name: *PNM Gas Services - Breech D #137 Landfarm*
Project Location: *9709291030; Composite*
Sampled by: *RH* Date: *29-Sep-97* Time: *10:30*
Analyzed by: *HR/DC* Date: *1-Oct-97*
Sample Matrix: *Soil*

Laboratory Analysis

Parameter	Results as Received	Unit of Measure	Limit of Quantitation	Unit of Measure
<i>Diesel Range Organics (C10 - C28)</i>	ND	mg/kg	5	mg/kg

ND - Not Detected at Limit of Quantitation

Quality Assurance Report

DRO QC No.: 0555-STD

Continuing Calibration Verification

Parameter	Method Blank	Unit of Measure	True Value	Analyzed Value	RPD	RPD Limit
<i>Diesel Range (C10 - C28)</i>	ND	ppm	200	202	1.2	15%

Matrix Spike

Parameter	1 - Percent Recovered	2 - Percent Recovered	Limit	RPD	RPD Limit
<i>Diesel Range (C10-C28)</i>	102	92	(70-130)	10	20%

Method - *SW-846 EPA Method 8015A mod. - Nonhalogenated Volatile Hydrocarbons by Gas Chromatography*

Approved by:

Date:

[Signature]
10/2/97

P.O. BOX 2606 • FARMINGTON, NM 87499