

UNITED STATES  
DEPARTMENT OF THE INTERIOR  
GEOLOGICAL SURVEY

## APPLICATION FOR PERMIT TO DRILL, DEEPEN, OR PLUG BACK

## 1a. TYPE OF WORK

DRILL ☒DEEPEN ☐PLUG BACK ☐

## b. TYPE OF WELL

OIL  
WELL ☐GAS  
WELL ☒

OTHER

SINGLE  
ZONE ☐MULTIPLE  
ZONE ☒

## 2. NAME OF OPERATOR

Consolidated Oil &amp; Gas, Inc.

## 3. ADDRESS OF OPERATOR

1860 Lincoln Street, Denver, Colorado 80295

## 4. LOCATION OF WELL (Report location clearly and in accordance with any State requirements.)\*

At surface

790' FSL &amp; 1850' FEL of Sec. 34, T26N, R3W, NMPM

At proposed prod. zone

Same

## 14. DISTANCE IN MILES AND DIRECTION FROM NEAREST TOWN OR POST OFFICE\*

26 miles northwest of Lindrieth

## 15. DISTANCE FROM PROPOSED\*

LOCATION TO NEAREST  
PROPERTY OR LEASE LINE, FT.  
(Also to nearest drlg. unit line, if any)

790

## 16. NO. OF ACRES IN LEASE

2560'

## 18. DISTANCE FROM PROPOSED LOCATION\*

TO NEAREST WELL, DRILLING, COMPLETED,  
OR APPLIED FOR, ON THIS LEASE, FT.

## 19. PROPOSED DEPTH

6325'

17. NO. OF ACRES ASSIGNED  
TO THIS WELL

320 ✓

## 20. ROTARY OR CABLE TOOLS

Rotary

## 21. ELEVATIONS (Show whether DF, RT, GR, etc.)

7376 Ungraded GR

## 22. APPROX. DATE WORK WILL START\*

April 15, 1977

## 23.

## PROPOSED CASING AND CEMENTING PROGRAM

SIZE OF HOLE	SIZE OF CASING	WEIGHT PER FOOT	SETTING DEPTH	QUANTITY OF CEMENT
15"	10-3/4"	40.5#	300'	Circ. (approx. 250 sx.)
8-3/4"	7"	23#	4250'	Circ. (approx. 425 sx.)
6-1/4"	4-1/2"	10.5#	6325'	Approx. 250 sx.

1. Drill 15" hole to  $\pm$  300'. Set 10-3/4" casing. Circulate cement to surface
2. WOC 12 hrs.
3. Install blowout preventers. Pressure test surface casing and blowout preventer to 1000#
4. Drill 8-3/4" hole to approximately 300' below top of Pictured Cliff or to approximately 4250' with fresh water gel mud. Log. Run 7" casing and cement with approximately 425 sx. WOC 12 hrs.
5. Air or gas drill 6-1/4" hole to 6325'. Log
6. Set 4-1/2" casing with approximately 250 sx.
7. Selectively perforate and stimulate the Pictured Cliff and Mesaverde and complete as required by rules and regulations.

*Gas is dedicated*

IN ABOVE SPACE DESCRIBE PROPOSED PROGRAM: If proposal is to deepen or plug back, give data on present productive zone and proposed new productive zone. If proposal is to drill or deepen directionally, give pertinent data on subsurface locations and measured and true vertical depths. Give survey program, if any.

## 24.

SIGNED

*Walter E. Ellman, Jr.*

TITLE

Area Production Manager

DATE

3/17/77

(This space for Federal or State office use)

PERMIT NO.

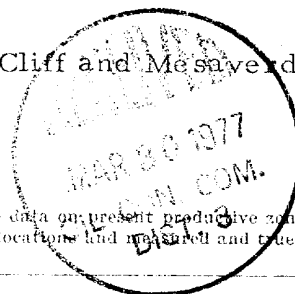
APPROVAL DATE

APPROVED BY

TITLE

DATE

CONDITIONS OF APPROVAL, IF ANY:



# NEW MEXICO OIL CONSERVATION COMMISSION WELL LOCATION AND ACREAGE DEDICATION PLAT

Well location must be from the corner boundaries of the Section

Owner <b>CONSOLIDATED OIL AND GAS, INC.</b>			Lease <b>JYCARILLA</b>		Well No. <b>5</b>
Base Line <b>0</b>	Section <b>36 NORTH</b>	Range <b>3 WEST</b>	County <b>RIO ARriba</b>		
Actual Footage from corner of well: from the <b>WEST</b> line and <b>1850</b> feet from the <b>EAST</b> line					
Ground Level <b>5275</b>	Surface <b>Sierra Nevada</b>	Topographic <b>Topo Pictured Cliff</b>		Dedicated Acreage <b>320</b>	Acres

- Outline the acreage dedicated to the subject well by colored pencil or hatchure marks on the plat below.
- If more than one lease is dedicated to the well, outline each and identify the ownership thereof (both as to working interest and royalty).
- If more than one lease of different ownership is dedicated to the well, have the interests of all owners been consolidated by communitization, unitization, force pooling, etc?

If answer to No. 3 is "yes" type of consolidation \_\_\_\_\_  
If answer is "no" list the owners and tract descriptions which have actually consolidated. (Use reverse side of this form if necessary) \_\_\_\_\_  
No alteration of the interests in the well, or interests have been consolidated (by communitization, unitization, forced pooling, or otherwise) until a new standard unit administering such interests, has been approved by the Commission.

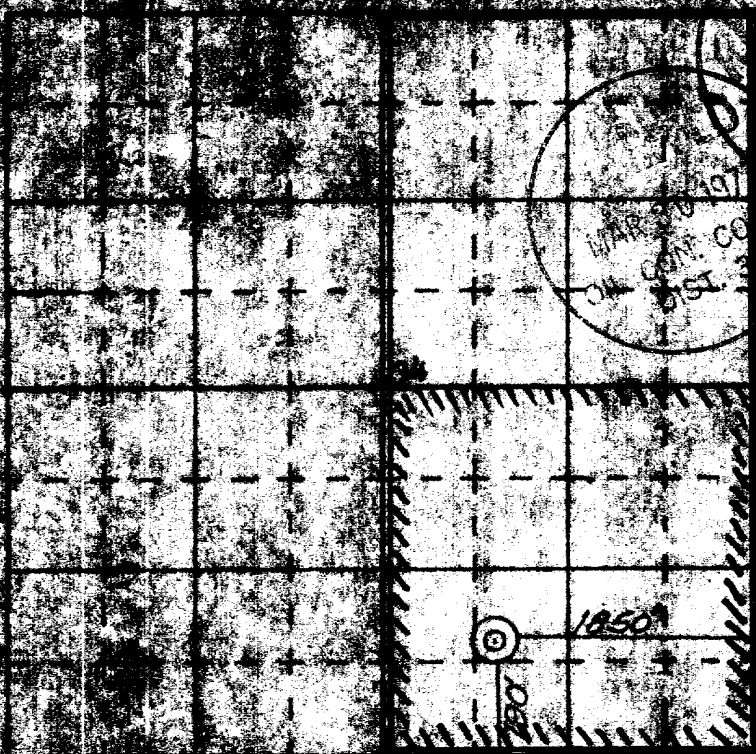
## CERTIFICATION

I hereby certify that the information furnished herein is true and complete to the best of my knowledge and belief.

*Alfred E. Ellison, Jr.*  
Name  
*Area Production Manager*  
Position  
*Consolidated Oil & Gas, Inc.*  
Company  
*4/25/77*  
Date

I hereby certify that the information appearing on this plat was prepared from the best of my knowledge and belief, and that the same is true and correct to the best of my knowledge and belief.

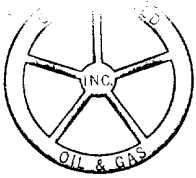
*James P. Leese*  
Date Surveyed **25 February 1977**  
Registered Professional Engineer  
and/or State Surveyor **James P. Leese**



SCALE: 1" = 40' (SEE PLAT)

ENGINEERING AND SURVEYING COMPANY, FARMINGTON, N. M.

Certificate No. **1463**



# *Consolidated Oil & Gas, Inc.*

LINCOLN TOWER BUILDING  
1860 LINCOLN STREET  
DENVER, COLORADO 80203  
(303) 255-1751

April 5, 1977

Re: Jicarilla No. 5  
O-34-T26N-R3W  
Rio Arriba County, New Mexico

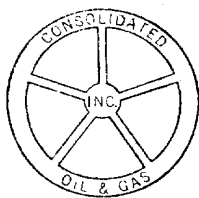
The acreage for subject well is dedicated to a gas purchaser.

CONSOLIDATED OIL & GAS, INC.

*Floyd E. Ellison, Jr.*

Floyd E. Ellison, Jr.  
Area Production Manager





# Consolidated Oil & Gas, Inc.

LINCOLN TOWER BUILDING  
1850 LINCOLN STREET  
DENVER, COLORADO 80203  
(303) 255-1751

80295

March 17, 1977

U. S. Geological Survey  
P. O. Box 1809  
Durango, Colorado 81301

Re: Application for Permit to Drill  
Jicarilla 5-34  
Rio Arriba County, New Mexico

Gentlemen:

Following is the information requested in NTL-6 to accompany the permit to drill:

1. Location: 790' FSL and 1850' FEL Sec. 34, T26N, R3W, Rio Arriba County, New Mexico
2. Elevation of Unprepared Ground: 7376' GL
3. Geologic Name of Surface Formation: San Jose
4. Type Drilling Tools: Rotary
5. Proposed Drilling Depth: 6325'
6. Estimated Tops of Geologic Markers: Ojo Alamo 3660'; Pictured Cliff 3960'; Cliff House 5610'; Pt. Lookout 6090'
7. Estimated Depths at Which Anticipated Gas or Oil Bearing Formations Expected: Pictured Cliff 3960'; Cliff House 5610'; Pt. Lookout 6090'
8. Casing Program and Setting Depth:

	<u>Size</u>	<u>Weight</u>	<u>Grade</u>	<u>Condition</u>	<u>Setting Depth</u>
Surface	10-3/4"	40.5#	X-42	New	300'
Intermediate	7"	23#	K-55	New	4250'
Liner	4-1/2"	10.5#	K-55	New	6325'

9. Casing Setting Depth and Cementing:

- a. Surface casing will be set at 300'. Cement will be circulated to surface with approximately 250 sx. neat cement containing 2%  $\text{CaCl}_2$ .
- b. Intermediate casing will be set to approximately 300' below the top of the Pictured Cliff or approximately 4250'. Cement will be circulated to surface using approximately 325 sx. 65/25 Pozmix containing 12% gel followed by 100 sx. neat containing 2%  $\text{CaCl}_2$ .
- c. Liner will be set to total depth of approximately 6325' using estimated 250 sx. 50/50 Pozmix containing 4% gel and some lost circulation material (Tuf-plug or Gilsonite).

Note: Volume of cement to be determined after running Caliper log.

10. Pressure Control Equipment: See attached diagram "A"

11. Circulating Media: 0-300' fresh water spud mud; 300-4250' fresh water low solid mud with following properties:

Viscosity 32-38 sec., water loss 20-6 cc, weight 8.5-9.0 ppg. with heavier weights if required by well conditions; 4250-6325' air or gas with conversion to mud of above characteristics if hole becomes wet.

12. Testing, Logging and Coring Programs:

- a. Open hole logs will be run prior to running intermediate casing and production liner
- b. Coring is not planned

13. Abnormal Pressure or Temperature and Hydrogen Sulfide Gas:

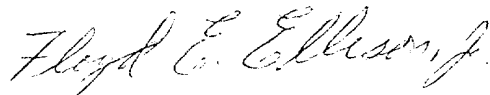
We do not anticipate abnormal pressure, temperature, or hydrogen sulfide gas; however, remote control blowout preventer as shown on attached diagram "A" will be installed.

U. S. Geological Survey  
March 17, 1977  
Page 3

14. Anticipated Starting Date: Drilling operations should start shortly  
after April 15, 1977
15. Other Facets of the Proposed Operations: None.

Yours very truly,

CONSOLIDATED OIL & GAS, INC.

A handwritten signature in cursive script that reads "Floyd E. Ellison, Jr.".

Floyd E. Ellison, Jr.  
Area Production Manager

FEE:lt  
Attach.

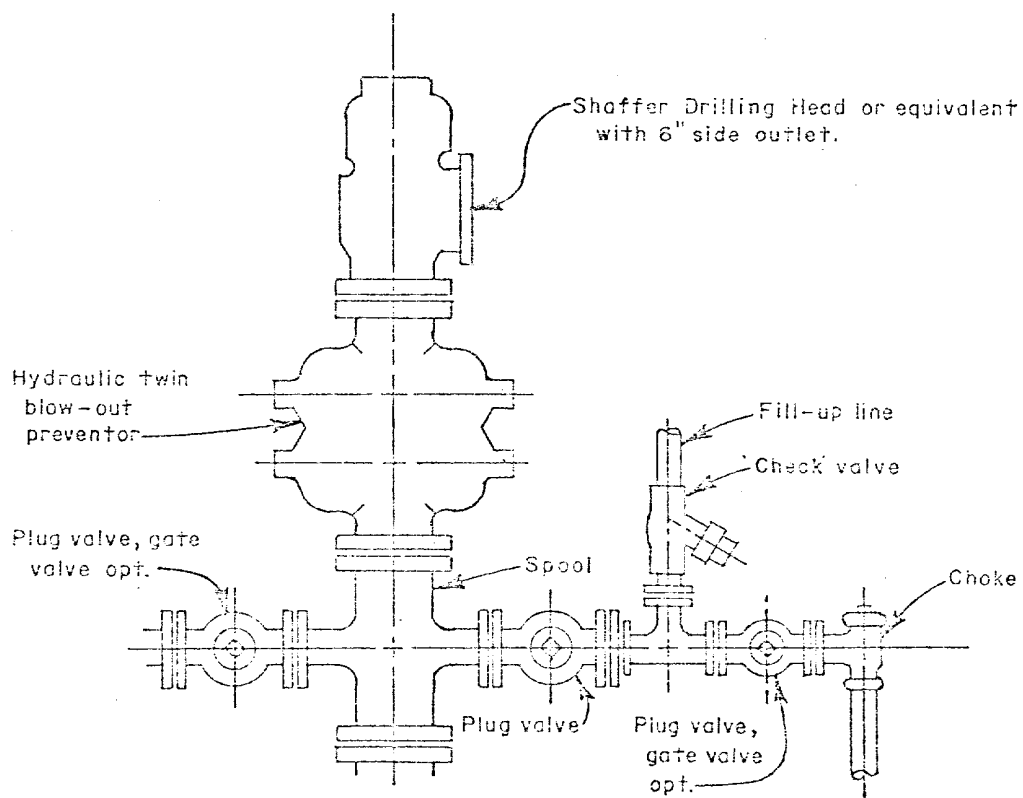


Diagram "A"

# DEVELOPMENT PLAN FOR SURFACE USE

Jicarilla 5-34

Consolidated Oil & Gas, Inc. - Operator

Jicarilla Apache Tribal Contract #117  
NW SW Sec. 6-T26N-R3W NMPM  
Rio Arriba County, New Mexico

## 1. Existing Roads

See enclosed topographic map (Exhibit 1) which shows existing improved and unimproved roads. The town of Lindrith is located 3-3/4 miles west to Highway 537, then 9-1/2 miles south on Highway 537 and 13 miles east on a County road.

## 2. Planned Access Roads

See enclosed topographic map. The required new road will be approximately 3200' long and 12' wide.

## 3. Location of Existing Wells

See enclosed topographic map

## 4. Location of Existing and/or Proposed Facilities

Consolidated does not have any wells or facilities in immediate area. If production is encountered, the tank battery and other required producing equipment will be located per attached completion plat. (Exhibit 2)

## 5. Location and Type of Water Supply

Water for drilling will be trucked approximately eight miles from water hole in Tapacito Creek

## 6. Source of Construction Materials

No additional construction material will be required

## 7. Methods of Handling Waste Disposal

All waste material will be contained by earthen and steel pits. Earthen pits will be subsequently backfilled and buried. A portable chemical toilet will be furnished for drilling personnel.

8. Ancillary Facilities

No separate drill campsites are proposed

9. Wellsite Layout

The drilling site location will be graded and will approximate 200 x 250 with natural drainage to the south. Care will be taken while grading to control erosion. A 4' cut will be required on the north side of the wellsite. See attached drillsite layout (Exhibit 3).

10. Plans for Restoration of Surface

- A. Following drilling and completion operations, all equipment and material not needed for operations will be removed. Pits containing fluid will be fenced until filled with any additional pits filled and the location cleaned of all trash and junk.
- B. After abandonment, any special rehabilitation and/or revegetation requirements (reseed with seed mixture No. 2) will be complied with and accomplished as expeditiously as possible. All pits should be filled and leveled within 90 days after abandonment.

11. Other Information

The location is on the side of a slope in a rolling hills area. A slight draw runs approximately 300' northwest of the staked location. The sandy clay soil has sagebrush and gramma vegetation with the land used for grazing. No residences or structures are nearby. The surface is owned by the Indians.

12. Operator's Representative

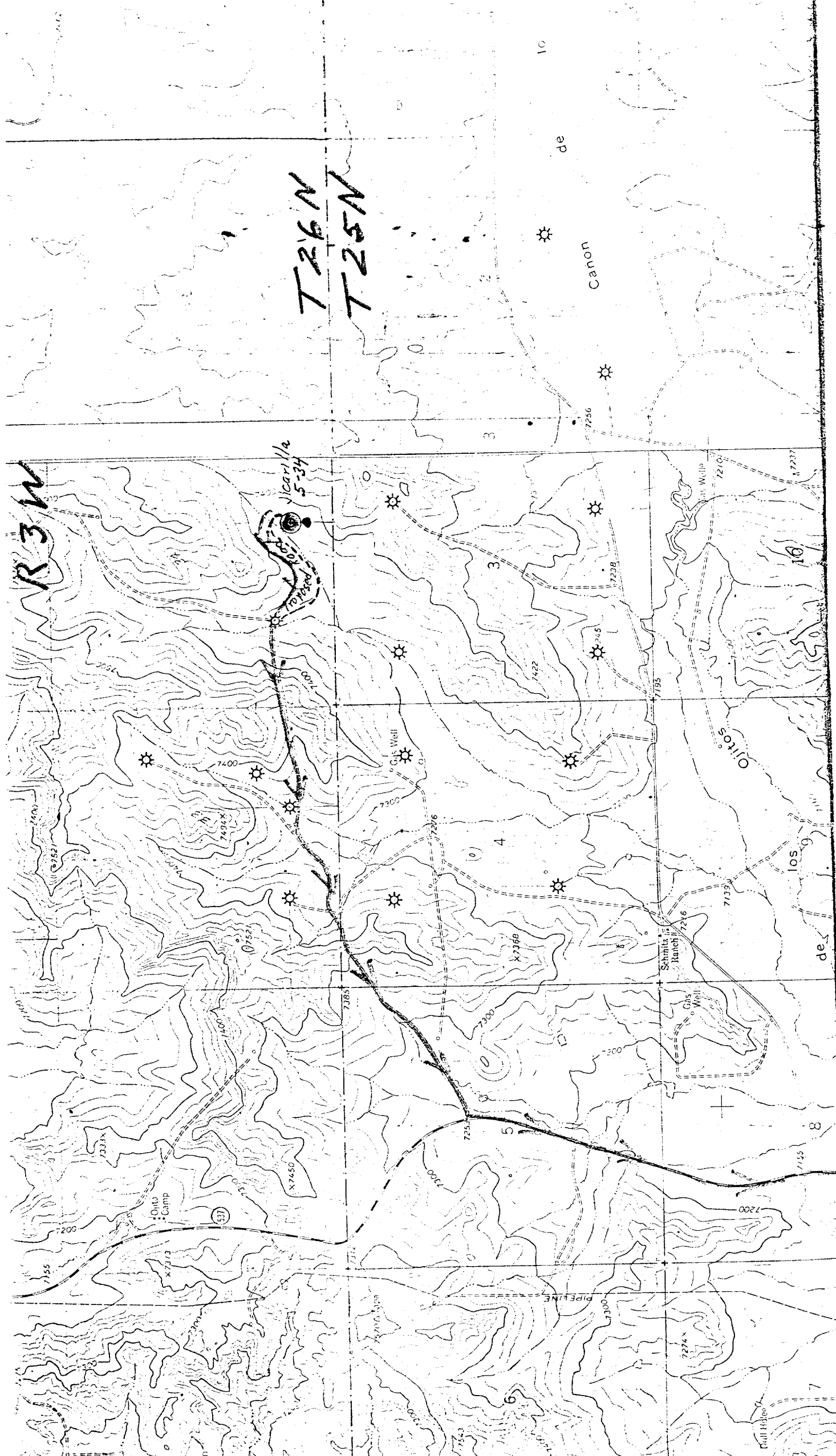
Consolidated Oil & Gas, Inc.  
Floyd E. Ellison, Jr.  
Area Production Manager  
1860 Lincoln Street  
Denver, Colorado 80295  
Phone (303) 255-1751

13. Certification

I hereby certify that I, or persons under my direct supervision, have inspected the proposed drillsite and access route; that I am familiar with the conditions which presently exist; that the statements made in this plan are, to the best of my knowledge, true and correct; and that the work associated with the operations proposed herein will be performed by Consolidated Oil & Gas, Inc. and its contractors and subcontractors in conformity with this plan and the terms and conditions under which it is approved.

3/18/77  
Date

Floyd E. Ellison, Jr.  
Floyd E. Ellison, Jr.  
Area Production Manager



R3W

T26N  
T25N

N271  
N261

1  
241417

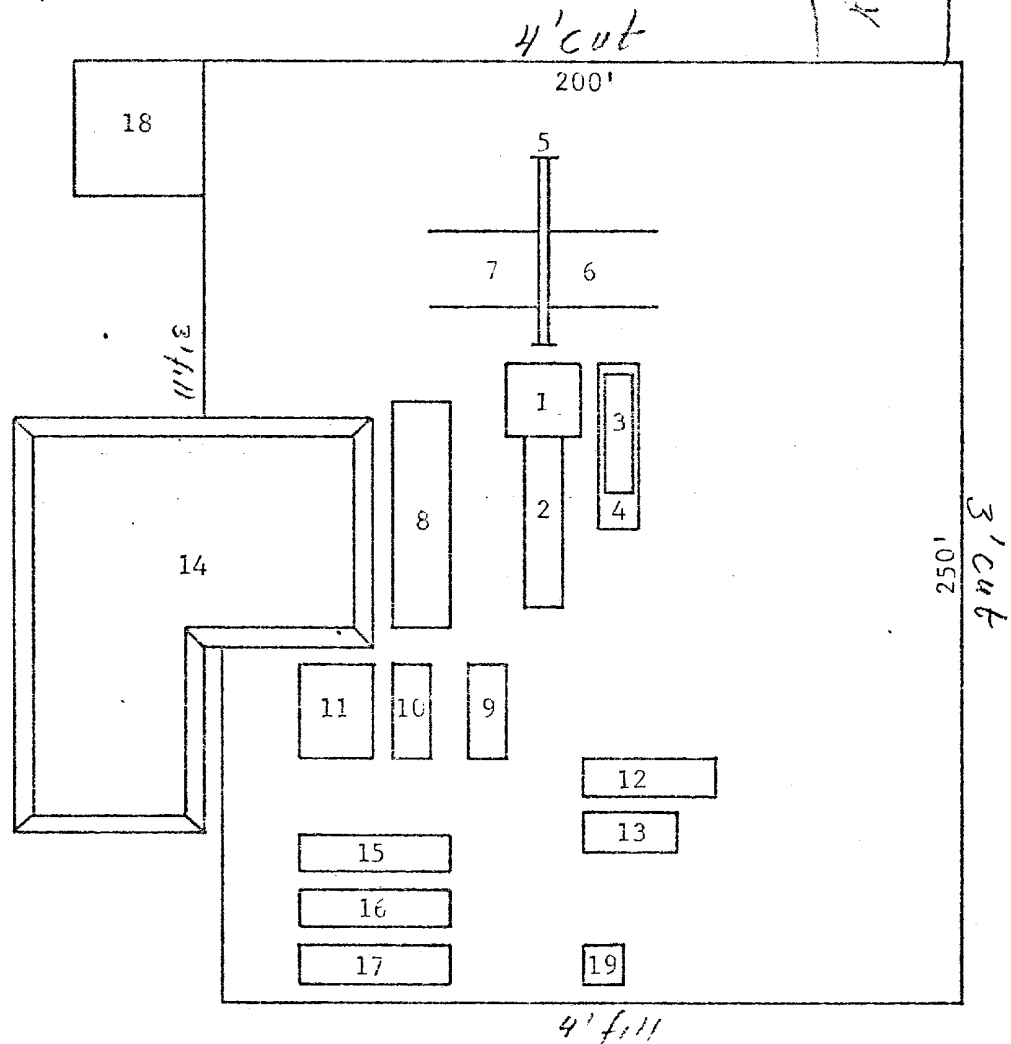
Lindeth  
21 miles

Jicarillo S-34

SE 1/4 Sec 34-T26N-R3W

Rio Arriba County, N.M.

1. Sub.
2. Drive in unit
3. Doghouse
4. Water tank
5. Walk (Cat)
6. Pipe racks
7. Pipe racks
8. Steel working pit
9. Pump
10. Pump
11. Mud storage
12. Light plant
13. Change house
14. Reserve pit
15. Air compressor
16. Air compressor
17. Air compressor
18. Blow pit
19. Latrine (Chemical)



1" equals 50'

Exhibit 2

Jicarilla 5-34

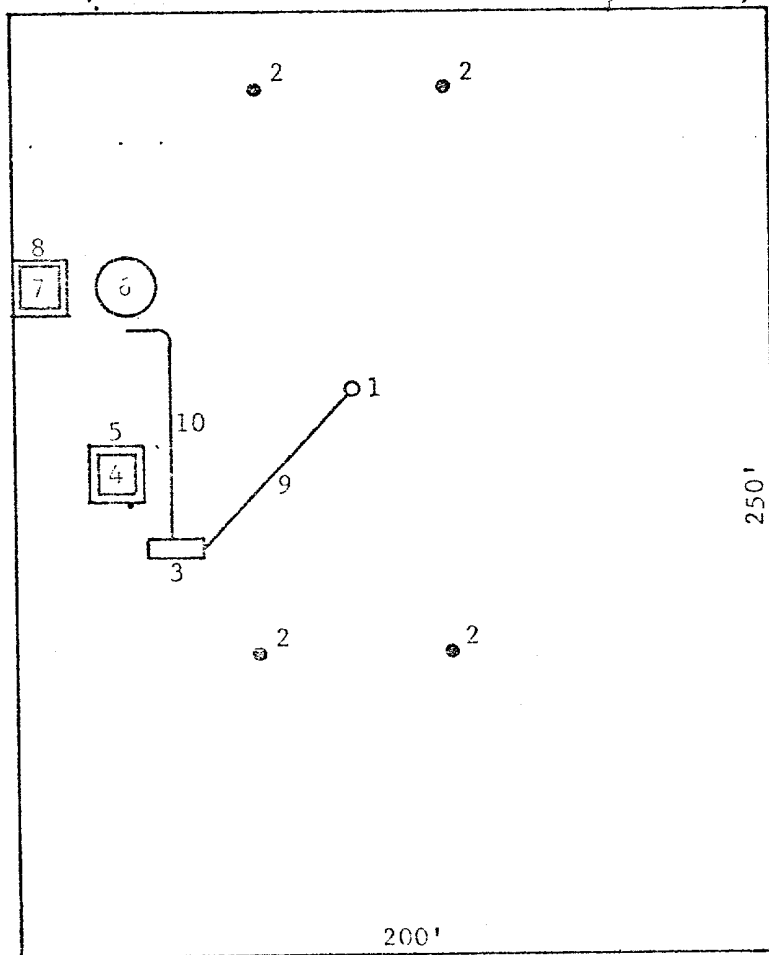
SE/4 Sec 34-T26N-R3W

Rio Arriba County, N.M.



Road

1. Well
2. Dead Men
3. Prod. Unit
4. Water Pit
5. Fence
6. 300 bbl. Oil Tank
7. Water Pit
8. Fence
9. 2" Buried flow line
10. 1½" Oil Line



1" equals 50'

Exhibit 3