

UNITED STATES
DEPARTMENT OF THE INTERIOR
GEOLOGICAL SURVEY

APPLICATION FOR PERMIT TO DRILL, DEEPEN, OR PLUG BACK

1a. TYPE OF WORK

DRILL ☒DEEPEN ☐PLUG BACK ☐

b. TYPE OF WELL

OIL
WELL ☐GAS
WELL ☒

OTHER

SINGLE
ZONE ☒MULTIPLE
ZONE ☐

2. NAME OF OPERATOR

Aztec Oil & Gas Company

3. ADDRESS OF OPERATOR

P. O. Drawer 570, Farmington, New Mexico

4. LOCATION OF WELL (Report location clearly and in accordance with any State requirements.)

At surface

1075' FNL & 1770' FWL

At proposed prod. zone

14. DISTANCE IN MILES AND DIRECTION FROM NEAREST TOWN OR POST OFFICE*

15. DISTANCE FROM PROPOSED*

LOCATION TO NEAREST
PROPERTY OR LEASE LINE, FT.
(Also to nearest drlg. unit line, if any)18. DISTANCE FROM PROPOSED LOCATION*
TO NEAREST WELL, DRILLING, COMPLETED,
OR APPLIED FOR, ON THIS LEASE, FT.

21. ELEVATIONS (Show whether DF, RT, GR, etc.)

6918' GR

16. NO. OF ACRES IN LEASE

19. PROPOSED DEPTH

5896'

17. NO. OF ACRES ASSIGNED
TO THIS WELL

w/ 320 - 160

20. ROTARY OR CABLE TOOLS

Rotary

22. APPROX. DATE WORK WILL START*

October 1, 1977

23.

PROPOSED CASING AND CEMENTING PROGRAM

SIZE OF HOLE	SIZE OF CASING	WEIGHT PER FOOT	SETTING DEPTH	QUANTITY OF CEMENT
12-1/4"	9-5/8"	36#	200'	145 sxs
8-3/4"	7"	20#	3850	140 sxs
6-1/4"	4-1/2"	10.5#	3700-5896'	275 sxs
	2-3/8"	4.7#	5896'	
	1-1/2"	2.9#	3600'	

Surface formation is San Jose.

Top of Ojo Alamo sand is at 2148'.

Top of Pictured Cliffs sand is at 3550'.

A fresh water mud system will be used for drilling to intermediate casing point.

An air system will be used for drilling to total depth.

It is anticipated that IES and GR-Density logs will be run at intermediate depth.

It is anticipated that GR-Induction and GR-Density logs will be run at total depth.

No abnormal pressures or poisonous gases are anticipated in this well.

It is expected that this well will be drilled before October 1, 1977.

This depends on time required for approvals, rig availability and the

IN ABOVE SPACE DESCRIBE PROPOSED PROGRAM: If proposal is to deepen or plug back, give data on present productive zone and proposed new productive zone. If proposal is to drill or deepen directionally, give pertinent data on subsurface locations and measured and true vertical depths. Give blowout preventer program, if any.

24. weather. Gas is dedicated.

SIGNED

TITLE District Production Mgr. DATE August 19, 1977

(This space for Federal or State office use)

PERMIT NO.

APPROVAL DATE

APPROVED BY

TITLE

DATE

CONDITIONS OF APPROVAL, IF ANY:

*See Instructions On Reverse Side

NEW MEXICO OIL CONSERVATION COMMISSION
WELL LOCATION AND ACREAGE DEDICATION PLAT

Form C-102
Supersedes C-128
Effective 1-1-65

All distances must be from the outer boundaries of the Section.

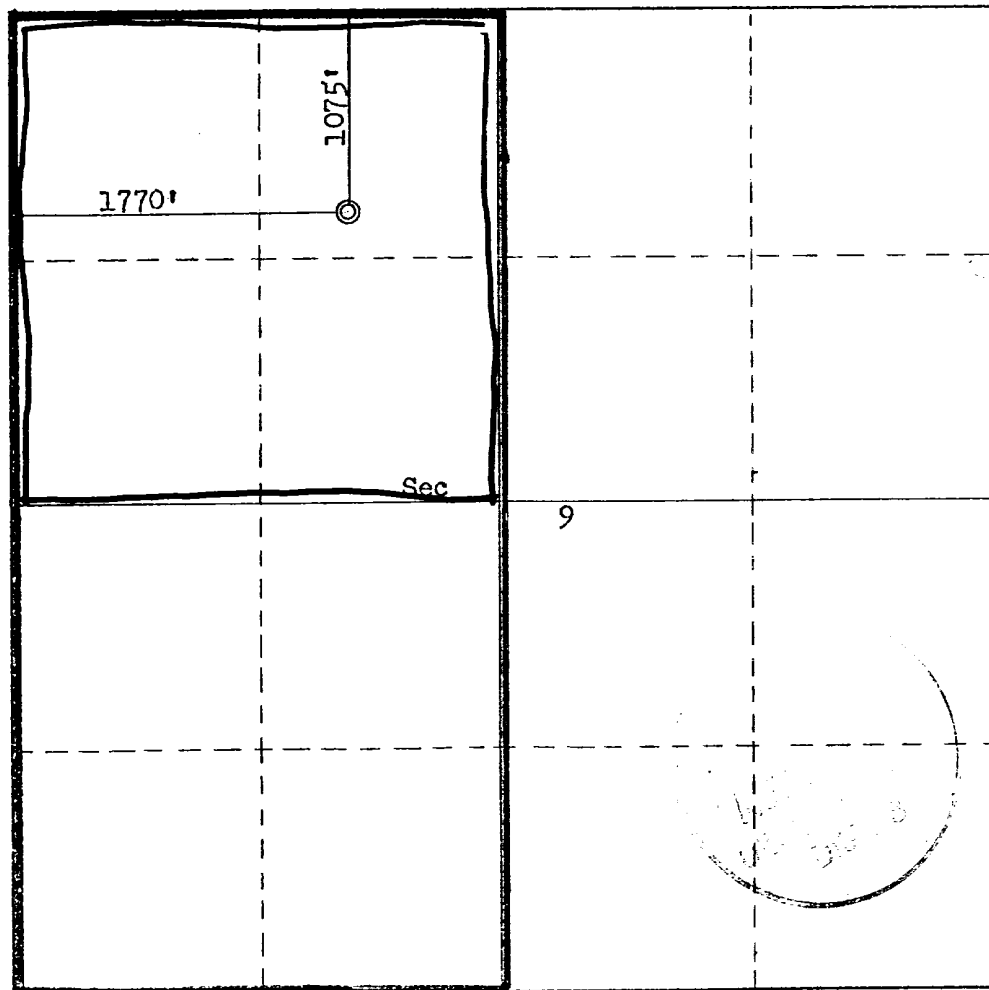
Operator Aztec Oil & Gas Company			Lease Arizona-Jicarilla "B"		Well No. 8
Unit Letter C	Section 9	Township 26N	Range 5W	County Rio Arriba	
Actual Footage Location of Well: 1075 feet from the North line and 1770 feet from the West line					
Ground Level Elev. 6913	Producing Formation Mesa Verde-Pictured Cliffs	Pool Blanco-South Blanco	Dedicated Acreage: 320 - 160 Acres		

1. Outline the acreage dedicated to the subject well by colored pencil or hachure marks on the plat below.
2. If more than one lease is dedicated to the well, outline each and identify the ownership thereof (both as to working interest and royalty).
3. If more than one lease of different ownership is dedicated to the well, have the interests of all owners been consolidated by communitization, unitization, force-pooling, etc?

☐ Yes ☐ No If answer is "yes," type of consolidation _____

If answer is "no," list the owners and tract descriptions which have actually been consolidated. (Use reverse side of this form if necessary.) _____

No allowable will be assigned to the well until all interests have been consolidated (by communitization, unitization, forced-pooling, or otherwise) or until a non-standard unit, eliminating such interests, has been approved by the Commission.



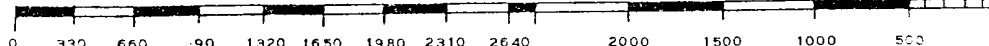
CERTIFICATION

I hereby certify that the information contained herein is true and complete to the best of my knowledge and belief.

Name *[Signature]*
Position
District Production Mgr.
Company
Aztec Oil and Gas Company
Date
August 19, 1977

I hereby certify that the well location shown on this plat was plotted from field notes of actual surveys made by me or under my supervision, and that the same is true and correct to the best of my knowledge and belief.

Date Surveyed
August 17, 1977
Registered Professional Engineer and/or Land Surveyor
[Signature]
Fred B. Kerr Jr.
Certificate No.
3950



AZTEC OIL & GAS COMPANY

P. O. DRAWER 570
FARMINGTON, NEW MEXICO 87401

United States Geological Survey
P. O. Box 1809
Durango, Colorado

Attention: Mr. Jerry Long

Dear Sir:

I hereby certify that I, or persons under my direct supervision, have inspected the proposed drillsite and access route; that I am familiar with the conditions which presently exist; that the statements made in this plan are, to the best of my knowledge, true and correct; and, that the work associated with the operations proposed herein be performed by Aztec Oil & Gas Company and its contractors and subcontractors in conformity with this plan and the terms and conditions under which it is approved.

Date: August 19, 1977

Name: Curtis C. Rawson

Title: District Engineer

AZTEC OIL & GAS COMPANY

P. O. DRAWER 570
FARMINGTON, NEW MEXICO 87401

August 19, 1977

United States Geological Survey
P. O. Box 1809
Durango, Colorado

Attention: Mr. Jerry Long

Dear Sir:

Enclosed please find map showing existing roads and planned access roads to Aztec Oil and Gas Company's Arizona Jicarilla B #8 well. The locations of tank batteries and flow lines will be on location with well. A burn pit will be provided for disposal of trash. Cuttings, drilling fluid and produced fluids will be put into the reserve pit and properly disposed of depending on amount and type of fluids.

There will be no camps or air strips.

Also enclosed is location layout showing approximate location of rig, pits and pipe racks.

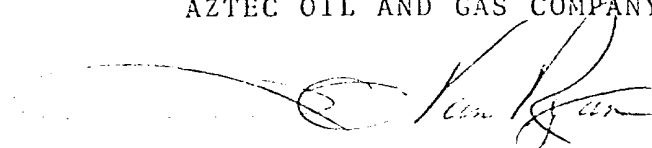
Water supply will be Jicarilla Reservation Water Hole.

The location will be restored according to Bureau of Land Management standards. This work will begin when all related construction is finished.

Mr. Max Larson will be Aztec Oil and Gas Company's field representative supervising these operations.

Yours truly,

AZTEC OIL AND GAS COMPANY

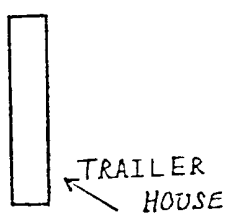
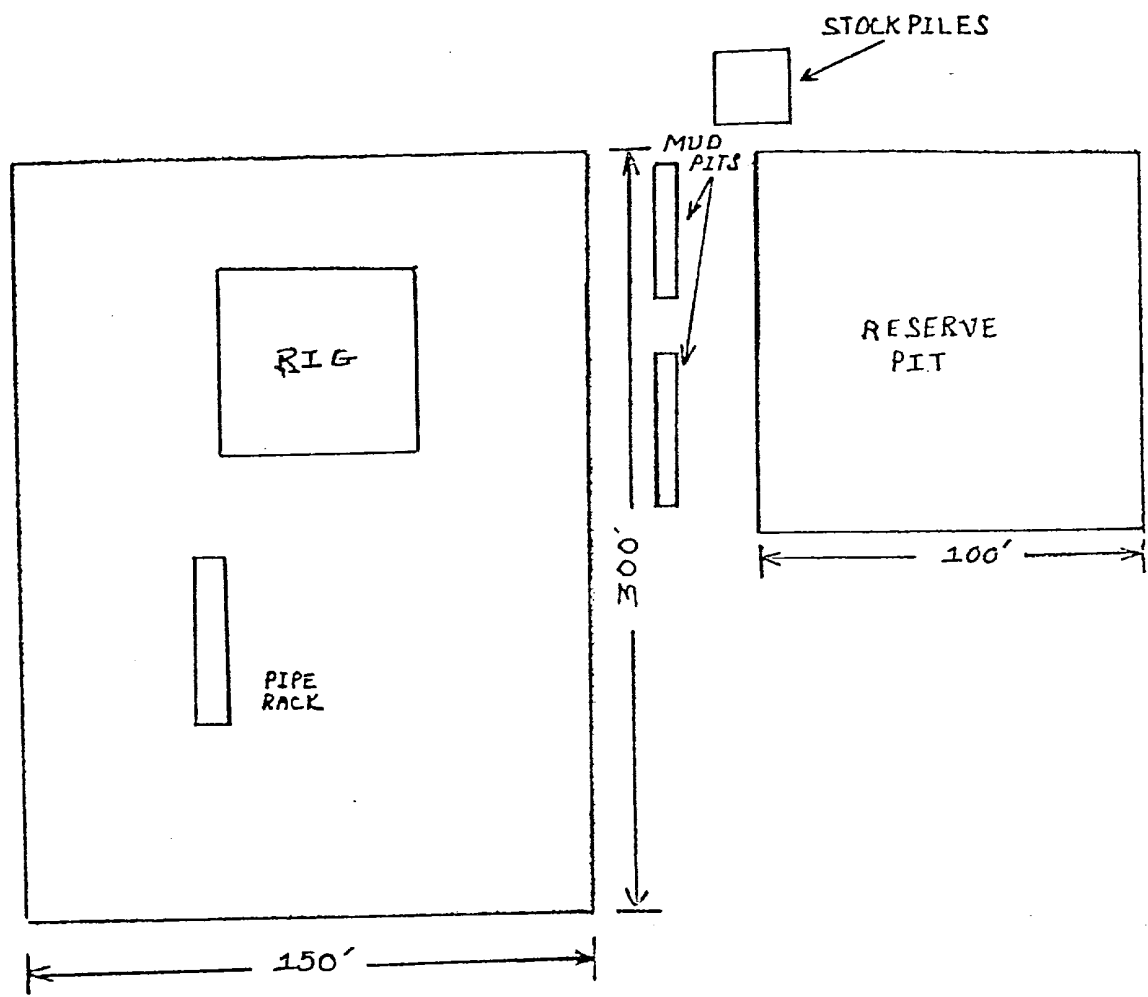


L. O. Van Ryan
District Production Manager

LOVR/dg

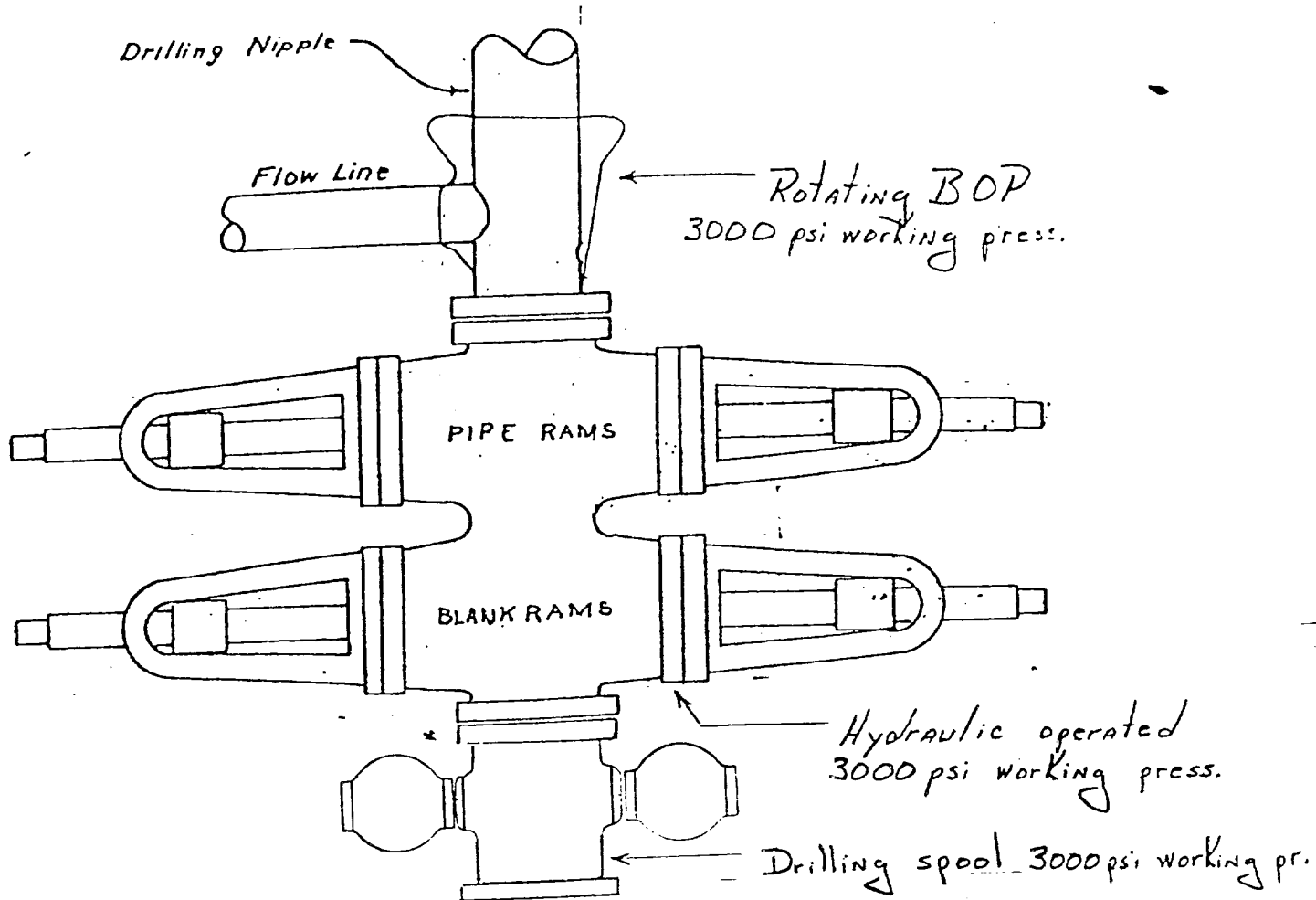
BURN
PIT
← 25' →

LOCATION LAYOUT



PARKING AREA

CUT REQUIRED FOR ABOVE
LOCATION: 12'



Preventers and spools are to have
through bore of 8" - 3000# PSI or larger.

AZTEC OIL & GAS COMPANY

P. O. DRAWER 570
FARMINGTON, NEW MEXICO 87401

August 19, 1977

United States Geological Survey
P. O. Box 1809
Durango, Colorado

Attention: Mr. Jerry Long

Re: Blowout Preventer Plan

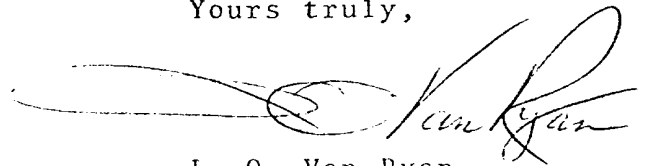
Dear Sir:

All drilling and completion wells will be equipped with 8" Shaffer LWP double hydraulic blowout preventers and a 2000 "C" Payne Hydraulic closing unit with steel line.

The preventer is 3000# working pressure and 6000# test.

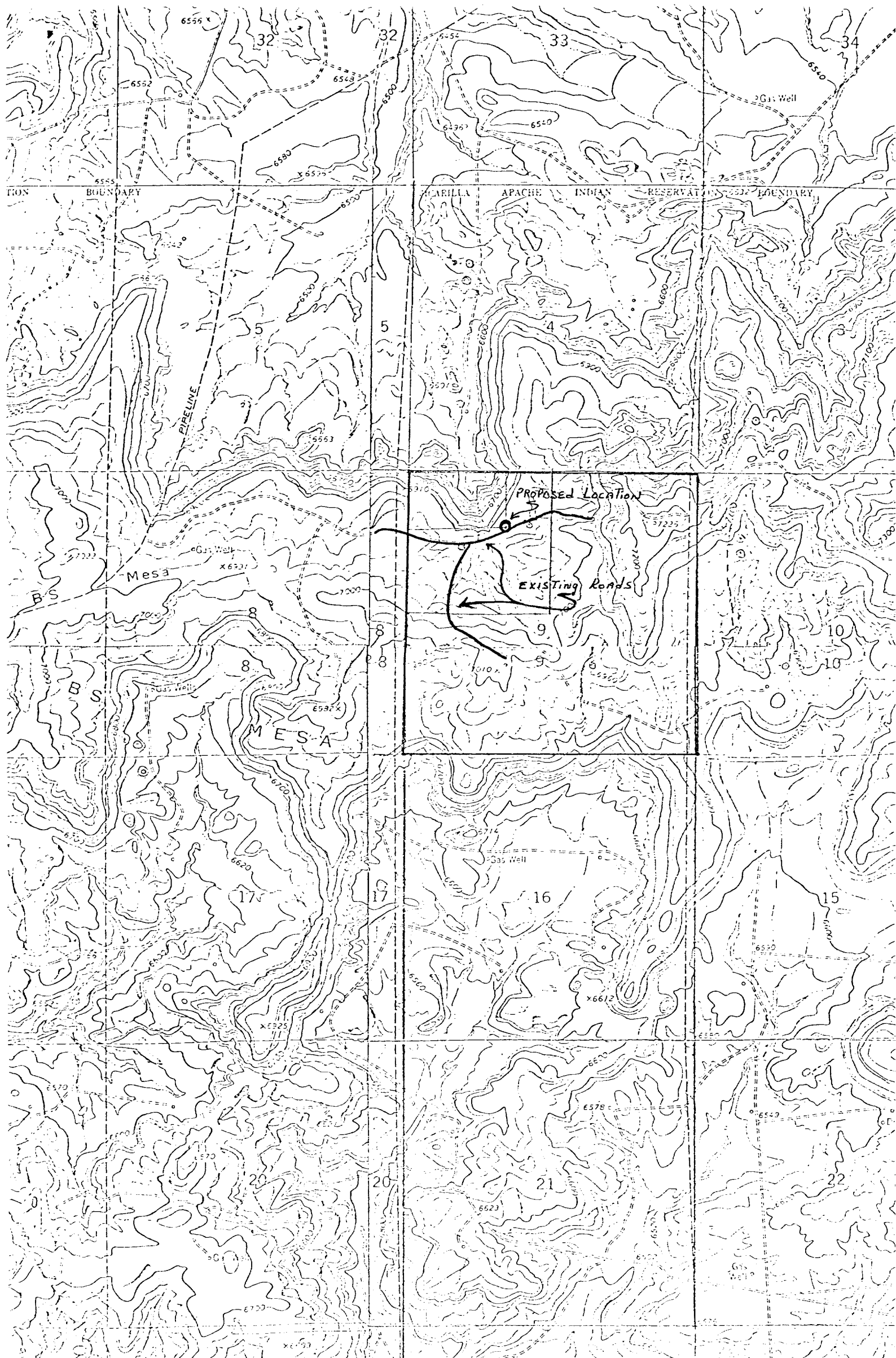
All crews will be thoroughly trained in the operation of this preventer. The preventer will be tested at the beginning of every tower change to insure proper operation.

Yours truly,

A handwritten signature in dark ink, appearing to read "L. O. Van Ryan", is written over a horizontal line.

L. O. Van Ryan
District Production Manager

LOVR/dg



Vicinity Map for
AZTEC OIL & GAS COMPANY #3 Arizona-Jicarilla B
1075'FWL 1770'FWL Sec 9-T26N-R5W