

UNITED STATES
DEPARTMENT OF THE INTERIOR
GEOLOGICAL SURVEY

APPLICATION FOR PERMIT TO DRILL, DEEPEN, OR PLUG BACK

1a. TYPE OF WORK

DRILL ☒DEEPEN ☐PLUG BACK ☐

b. TYPE OF WELL

OIL
WELL ☐GAS
WELL ☒OTHER ☐SINGLE
ZONE ☒MULTIPLE
ZONE ☐

2. NAME OF OPERATOR

Supren Energy Corporation

3. ADDRESS OF OPERATOR

P. O. Box 808, Farmington, New Mexico 87401

4. LOCATION OF WELL (Report location clearly and in accordance with any State requirements.)*

At surface

828 feet from the South line and 1485 feet from the East line.

At proposed prod. zone Same as above.

14. DISTANCE IN MILES AND DIRECTION FROM NEAREST TOWN OR POST OFFICE*

6-1/2 Miles Northwest of Ojito, New Mexico

15. DISTANCE FROM PROPOSED*

LOCATION TO NEAREST
PROPERTY OR LEASE LINE, FT.
(Also to nearest drlg. unit line, if any) 828' / Lease line

16. NO. OF ACRES IN LEASE

2560

18. DISTANCE FROM PROPOSED LOCATION*
TO NEAREST WELL, DRILLING, COMPLETED,
OR APPLIED FOR, ON THIS LEASE, FT.

2018 ft.

19. PROPOSED DEPTH

3550

21. ELEVATIONS (Show whether DF, RT, GR, etc.)

6832 GR

17. NO. OF ACRES ASSIGNED
TO THIS WELL

160

20. ROTARY OR CABLE TOOLS

Rotary

22. APPROX. DATE WORK WILL START*

December 10, 1977

23.

PROPOSED CASING AND CEMENTING PROGRAM

SIZE OF HOLE	SIZE OF CASING	WEIGHT PER FOOT	SETTING DEPTH	QUANTITY OF CEMENT
9-7/8"	7-5/8"	26.40	200'	100 cu. ft.
6-3/4"	4-1/2"	9.50	3550	1000 cu. ft.

This well will be drilled and completed in the Pictured Cliff formation. After pipe is set and cemented it will be perforated and sand-water fraced to stimulate production. 2-1/16" tubing will be set at approximately 3400 feet.

IN ABOVE SPACE DESCRIBE PROPOSED PROGRAM: If proposal is to deepen or plug back, give data on present productive zone and proposed new productive zone. If proposal is to drill or deepen directionally, give pertinent data on subsurface locations and measured and true vertical depths. Give blowout preventer program, if any.

24.

SIGNED

Kenneth E. Lohdy

TITLE

Production Superintendent

DATE

October 7, 1977

(This space for Federal or State office use)

PERMIT NO.

APPROVAL DATE

APPROVED BY

TITLE

CONDITIONS OF APPROVAL, IF ANY:

G. A. F.

*See Instructions On Reverse Side

30-039-21518

5. LEASE DESIGNATION AND SERIAL NO.

Contract No. 107

6. IF INDIAN, ALLOTTEE OR TRIBE NAME

Jicarilla Apache

7. UNIT AGREEMENT NAME

8. FARM OR LEASE NAME

Jicarilla "F"

9. WELL NO.

4

10. FIELD AND POOL, OR WILDCAT

Art. South Blanco Pictured Cliffs

11. SEC., T., R., M., OR BLK.
AND SURVEY OR AREASec. 33, T-26N, R-4W
N.M.P.M.

12. COUNTY OR PARISH

13. STATE

Rio Arriba

New Mexico

Instructions

General: This form is designed for submitting proposals to perform certain well operations, as indicated, on all types of lands and leases for appropriate action by either a Federal or a State agency, or both, pursuant to applicable Federal and/or State laws and regulations. Any necessary special instructions concerning the use of this form and the number of copies to be submitted, particularly with regard to local, area, or regional procedures and practices, either are shown below or will be issued by, or may be obtained from, the local Federal and/or State office.

Item 1: If the proposal is to redrill to the same reservoir at a different subsurface location or to a new reservoir, use this form with appropriate notations. Consult applicable State or Federal regulations concerning subsequent work proposals or reports on the well.

Item 4: If there are no applicable State requirements, locations on Federal or Indian land should be described in accordance with Federal requirements. Consult local State or Federal office for specific instructions.

Item 14: Needed only when location of well cannot readily be found by road from the land or lease description. A plat, or plats, separate or on this reverse side, showing the roads to, and the surveyed location of, the well, and any other required information, should be furnished when required by Federal or State agency offices.

Items 15 and 18: If well is to be, or has been directionally drilled, give distances for subsurface location of hole in any present or objective production zone.

Item 22: Consult applicable Federal or State regulations, or appropriate officials, concerning approval of the proposal before operations are started.

NEW MEXICO OIL CONSERVATION COMMISSION
WELL LOCATION AND ACERAGE DEDICATION PLAT

All distances must be from the outer boundaries of the Section

Operator SUPRON ENERGY CORPORATION			Lease JICARILLA "F"		Well No. 4
Unit Letter 0	Section 33	Township 26 NORTH	Range 4 WEST	County RIO ARriba	
Actual Footage Location of Well: 828 feet from the SOUTH line and 1485 feet from the EAST line					
Ground Level Elev. 6832	Producing Formation PICTURED CLIFFS		Pool SOUTH BLANCO EXTENSION	Dedicated Acreage: 160 Acres	

1. Outline the acreage dedicated to the subject well by colored pencil or hatchure marks on the plat below.
2. If more than one lease is dedicated to the well, outline each and identify the ownership thereof (both as to working interest and royalty),
3. If more than one lease of different ownership is dedicated to the well, have the interests of all owners been consolidated by communitization, unitization, force-pooling, etc?

() Yes () No If answer is "yes," type of consolidation

If answer is "no," list the owners and tract descriptions which have actually consolidated. (Use reverse side of this form if necessary.)

No allowable will be assigned to the well until all interests have been consolidated (by communitization, unitization, forced-pooling, or otherwise) or until a non standard unit, eliminating such interests, has been approved by the Commission.

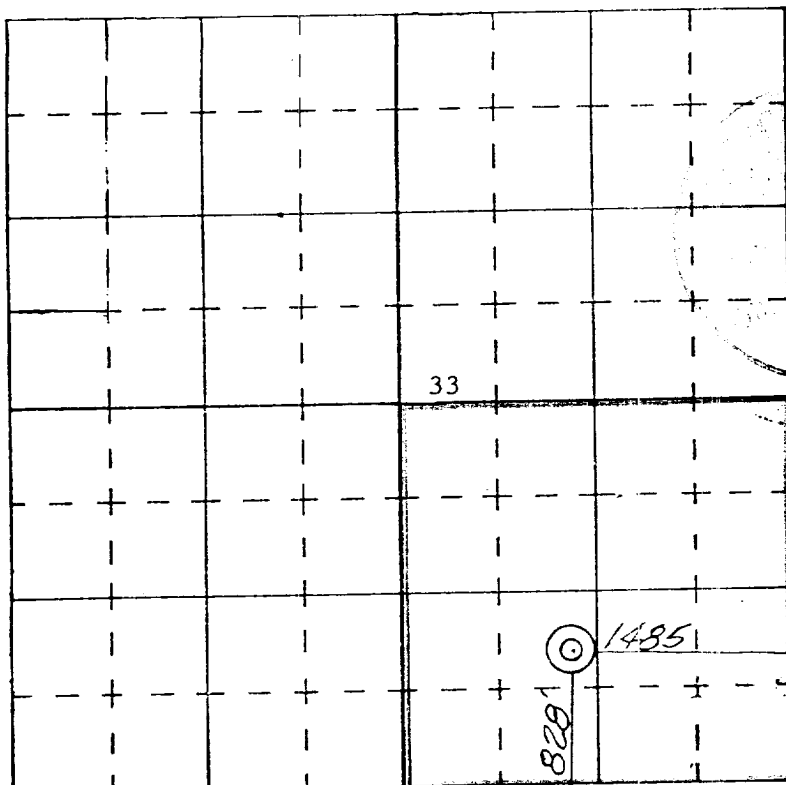
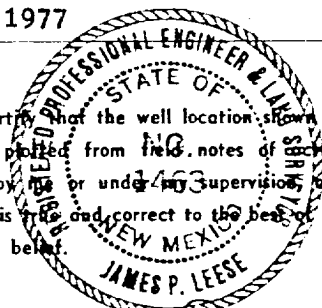
CERTIFICATION

I hereby certify that the information contained herein is true and complete to the best of my knowledge and belief.

Rudy D. Motto
 Name
Rudy D. Motto
 Position
Area Superintendent
 Company
Supron Energy Corporation
 Date
Oct. 5, 1977

I hereby certify that the well location shown on this plat was plotted from field notes of actual surveys made by me or under my supervision, and that the same is true and correct to the best of my knowledge and belief.

14 September 1977
 Date Surveyed
James P. Leese
 Registered Professional Engineer
 and/or Land Surveyor
James P. Leese



SCALE—4 INCHES EQUALS 1 MILE

October 5, 1977

United States Geological Survey
Box 1809
Durango, Colorado 81301

Attention: Jerry Long

Dear Sir:

Supron Energy Corporation proposes to drill the Jicarilla "F" No. 4 well located 828 feet from the South line and 1485 feet from the East line of Section 33, Township 26 North, Range 4 West, N.M.P.M., Rio Arriba County, New Mexico.

The following attachments are included with this application:

1. Map of existing roads.
2. No access road is required.
3. Location of existing wells.
4. Lateral roads to well locations.
5. Location of surface equipment, if required.
6. Drilling and completion water will be obtained from the Supron Energy Corporation water well located SW/1/4 of Sec. 23, Twp. 26 North, Rge. 4 West, N.M.P.M., Rio Arriba County, New Mexico.
7. Waste will be disposed of by being placed in the reserve pit and buried upon completion of the well.
8. There will be no camp at or near the well site.
9. There will be no air strip.
10. A Plat is attached showing the location of the rig, mud tanks, reserve pit, burn pit, ect..
11. A letter of certification is attached.
12. After the well is completed the location will be cleaned up and bladed. The reserve pit will be fenced until it has dried and then the pit will be restored to its natural state. The well does not require an access road.
13. The soil is sandy loam and sand rock with the principal vegetation being Pinon, Juniper, Sage brush and Gramma grass.

1998, 1999, 2000, 2001, 2002, 2003, 2004, 2005, 2006, 2007, 2008, 2009, 2010, 2011, 2012, 2013, 2014, 2015, 2016, 2017, 2018, 2019, 2020, 2021, 2022, 2023, 2024, 2025, 2026, 2027, 2028, 2029, 2030, 2031, 2032, 2033, 2034, 2035, 2036, 2037, 2038, 2039, 2040, 2041, 2042, 2043, 2044, 2045, 2046, 2047, 2048, 2049, 2050, 2051, 2052, 2053, 2054, 2055, 2056, 2057, 2058, 2059, 2060, 2061, 2062, 2063, 2064, 2065, 2066, 2067, 2068, 2069, 2070, 2071, 2072, 2073, 2074, 2075, 2076, 2077, 2078, 2079, 2080, 2081, 2082, 2083, 2084, 2085, 2086, 2087, 2088, 2089, 2090, 2091, 2092, 2093, 2094, 2095, 2096, 2097, 2098, 2099, 2100, 2101, 2102, 2103, 2104, 2105, 2106, 2107, 2108, 2109, 2110, 2111, 2112, 2113, 2114, 2115, 2116, 2117, 2118, 2119, 2120, 2121, 2122, 2123, 2124, 2125, 2126, 2127, 2128, 2129, 2130, 2131, 2132, 2133, 2134, 2135, 2136, 2137, 2138, 2139, 2140, 2141, 2142, 2143, 2144, 2145, 2146, 2147, 2148, 2149, 2150, 2151, 2152, 2153, 2154, 2155, 2156, 2157, 2158, 2159, 2160, 2161, 2162, 2163, 2164, 2165, 2166, 2167, 2168, 2169, 2170, 2171, 2172, 2173, 2174, 2175, 2176, 2177, 2178, 2179, 2180, 2181, 2182, 2183, 2184, 2185, 2186, 2187, 2188, 2189, 2190, 2191, 2192, 2193, 2194, 2195, 2196, 2197, 2198, 2199, 2200, 2201, 2202, 2203, 2204, 2205, 2206, 2207, 2208, 2209, 2210, 2211, 2212, 2213, 2214, 2215, 2216, 2217, 2218, 2219, 2220, 2221, 2222, 2223, 2224, 2225, 2226, 2227, 2228, 2229, 2230, 2231, 2232, 2233, 2234, 2235, 2236, 2237, 2238, 2239, 2240, 2241, 2242, 2243, 2244, 2245, 2246, 2247, 2248, 2249, 2250, 2251, 2252, 2253, 2254, 2255, 2256, 2257, 2258, 2259, 2260, 2261, 2262, 2263, 2264, 2265, 2266, 2267, 2268, 2269, 2270, 2271, 2272, 2273, 2274, 2275, 2276, 2277, 2278, 2279, 2280, 2281, 2282, 2283, 2284, 2285, 2286, 2287, 2288, 2289, 2290, 2291, 2292, 2293, 2294, 2295, 2296, 2297, 2298, 2299, 2300, 2301, 2302, 2303, 2304, 2305, 2306, 2307, 2308, 2309, 2310, 2311, 2312, 2313, 2314, 2315, 2316, 2317, 2318, 2319, 2320, 2321, 2322, 2323, 2324, 2325, 2326, 2327, 2328, 2329, 2330, 2331, 2332, 2333, 2334, 2335, 2336, 2337, 2338, 2339, 2340, 2341, 2342, 2343, 2344, 2345, 2346, 2347, 2348, 2349, 2350, 2351, 2352, 2353, 2354, 2355, 2356, 2357, 2358, 2359, 2360, 2361, 2362, 2363, 2364, 2365, 2366, 2367, 2368, 2369, 2370, 2371, 2372, 2373, 2374, 2375, 2376, 2377, 2378, 2379, 2380, 2381, 2382, 2383, 2384, 2385, 2386, 2387, 2388, 2389, 2390, 2391, 2392, 2393, 2394, 2395, 2396, 2397, 2398, 2399, 2400, 2401, 2402, 2403, 2404, 2405, 2406, 2407, 2408, 2409, 2410, 2411, 2412, 2413, 2414, 2415, 2416, 2417, 2418, 2419, 2420, 2421, 2422, 2423, 2424, 2425, 2426, 2427, 2428, 2429, 2430, 2431, 2432, 2433, 2434, 2435, 2436, 2437, 2438, 2439, 2440, 2441, 2442, 2443, 2444, 2445, 2446, 2447, 2448, 2449, 2450, 2451, 2452, 2453, 2454, 2455, 2456, 2457, 2458, 2459, 2460, 2461, 2462, 2463, 2464, 2465, 2466, 2467, 2468, 2469, 2470, 2471, 2472, 2473, 2474, 2475, 2476, 2477, 2478, 2479, 2480, 2481, 2482, 2483, 2484, 2485, 2486, 2487, 2488, 2489, 2490, 2491, 2492, 2493, 2494, 2495, 2496, 2497, 2498, 2499, 2500, 2501, 2502, 2503, 2504, 2505, 2506, 2507, 2508, 2509, 2510, 2511, 2512, 2513, 2514, 2515, 2516, 2517, 2518, 2519, 2520, 2521, 2522, 2523, 2524, 2525, 2526, 2527, 2528, 2529, 2530, 2531, 2532, 2533, 2534, 2535, 2536, 2537, 2538, 2539, 2540, 2541, 2542, 2543, 2544, 2545, 2546, 2547, 2548, 2549, 2550, 2551, 2552, 2553, 2554, 2555, 2556, 2557, 2558, 2559, 2560, 2561, 2562, 2563, 2564, 2565, 2566, 2567, 2568, 2569, 2570, 2571, 2572, 2573, 2574, 2575, 2576, 2577, 2578, 2579, 2580, 2581, 2582, 2583, 2584, 2585, 2586, 2587, 2588, 2589, 2590, 2591, 2592, 2593, 2594, 2595, 2596, 2597, 2598, 2599, 2600, 2601, 2602, 2603, 2604, 2605, 2606, 2607, 2608, 2609, 2610, 2611, 2612, 2613, 2614, 2615, 2616, 2617, 2618, 2619, 2620, 2621, 2622, 2623, 2624, 2625, 2626, 2627, 2628, 2629, 2630, 2631, 2632, 2633, 2634, 2635, 2636, 2637, 2638, 2639, 2640, 2641, 2642, 2643, 2644, 2645, 2646, 2647, 2648, 2649, 2650, 2651, 2652, 2653, 2654, 2655, 2656, 2657, 2658, 2659, 2660, 2661, 2662, 2663, 2664, 2665, 2666, 2667, 2668, 2669, 2670, 2671, 2672, 2673, 2674, 2675, 2676, 2677, 2678, 2679, 26

Journal of Management Education 30(6)p. 789-804

1. 1941 - 1942 - 1943 - 1944 - 1945 - 1946 - 1947 - 1948 - 1949 - 1950 - 1951 - 1952 - 1953 - 1954 - 1955 - 1956 - 1957 - 1958 - 1959 - 1960 - 1961 - 1962 - 1963 - 1964 - 1965 - 1966 - 1967 - 1968 - 1969 - 1970 - 1971 - 1972 - 1973 - 1974 - 1975 - 1976 - 1977 - 1978 - 1979 - 1980 - 1981 - 1982 - 1983 - 1984 - 1985 - 1986 - 1987 - 1988 - 1989 - 1990 - 1991 - 1992 - 1993 - 1994 - 1995 - 1996 - 1997 - 1998 - 1999 - 2000 - 2001 - 2002 - 2003 - 2004 - 2005 - 2006 - 2007 - 2008 - 2009 - 2010 - 2011 - 2012 - 2013 - 2014 - 2015 - 2016 - 2017 - 2018 - 2019 - 2020 - 2021 - 2022 - 2023 - 2024 - 2025 - 2026 - 2027 - 2028 - 2029 - 2030 - 2031 - 2032 - 2033 - 2034 - 2035 - 2036 - 2037 - 2038 - 2039 - 2040 - 2041 - 2042 - 2043 - 2044 - 2045 - 2046 - 2047 - 2048 - 2049 - 2050 - 2051 - 2052 - 2053 - 2054 - 2055 - 2056 - 2057 - 2058 - 2059 - 2060 - 2061 - 2062 - 2063 - 2064 - 2065 - 2066 - 2067 - 2068 - 2069 - 2070 - 2071 - 2072 - 2073 - 2074 - 2075 - 2076 - 2077 - 2078 - 2079 - 2080 - 2081 - 2082 - 2083 - 2084 - 2085 - 2086 - 2087 - 2088 - 2089 - 2090 - 2091 - 2092 - 2093 - 2094 - 2095 - 2096 - 2097 - 2098 - 2099 - 2100 - 2101 - 2102 - 2103 - 2104 - 2105 - 2106 - 2107 - 2108 - 2109 - 2110 - 2111 - 2112 - 2113 - 2114 - 2115 - 2116 - 2117 - 2118 - 2119 - 2120 - 2121 - 2122 - 2123 - 2124 - 2125 - 2126 - 2127 - 2128 - 2129 - 2130 - 2131 - 2132 - 2133 - 2134 - 2135 - 2136 - 2137 - 2138 - 2139 - 2140 - 2141 - 2142 - 2143 - 2144 - 2145 - 2146 - 2147 - 2148 - 2149 - 2150 - 2151 - 2152 - 2153 - 2154 - 2155 - 2156 - 2157 - 2158 - 2159 - 2160 - 2161 - 2162 - 2163 - 2164 - 2165 - 2166 - 2167 - 2168 - 2169 - 2170 - 2171 - 2172 - 2173 - 2174 - 2175 - 2176 - 2177 - 2178 - 2179 - 2180 - 2181 - 2182 - 2183 - 2184 - 2185 - 2186 - 2187 - 2188 - 2189 - 2190 - 2191 - 2192 - 2193 - 2194 - 2195 - 2196 - 2197 - 2198 - 2199 - 2200 - 2201 - 2202 - 2203 - 2204 - 2205 - 2206 - 2207 - 2208 - 2209 - 2210 - 2211 - 2212 - 2213 - 2214 - 2215 - 2216 - 2217 - 2218 - 2219 - 2220 - 2221 - 2222 - 2223 - 2224 - 2225 - 2226 - 2227 - 2228 - 2229 - 2230 - 2231 - 2232 - 2233 - 2234 - 2235 - 2236 - 2237 - 2238 - 2239 - 2240 - 2241 - 2242 - 2243 - 2244 - 2245 - 2246 - 2247 - 2248 - 2249 - 2250 - 2251 - 2252 - 2253 - 2254 - 2255 - 2256 - 2257 - 2258 - 2259 - 2260 - 2261 - 2262 - 2263 - 2264 - 2265 - 2266 - 2267 - 2268 - 2269 - 2270 - 2271 - 2272 - 2273 - 2274 - 2275 - 2276 - 2277 - 2278 - 2279 - 2280 - 2281 - 2282 - 2283 - 2284 - 2285 - 2286 - 2287 - 2288 - 2289 - 2290 - 2291 - 2292 - 2293 - 2294 - 2295 - 2296 - 2297 - 2298 - 2299 - 2300 - 2301 - 2302 - 2303 - 2304 - 2305 - 2306 - 2307 - 2308 - 2309 - 2310 - 2311 - 2312 -

[illegible]

1. The first step is to identify the problem or goal. This involves understanding the current situation and what needs to be achieved.

[illegible][illegible]

JICARILLA "F" NO. 4

Supplement to Form 9-331C

1. The Geologic name of the surface formation is, "Wasatch".
2. The estimated tops of important Geologic markers are:
 - A. Base of Ojo Alamo - 3048
 - B. Fruitland - 3238
 - C. Pictured Cliff - 3388
3. The estimated depths at which anticipated water, oil, gas or other mineral bearing formations are expected to be encountered are:
 - A. Base of Ojo Alamo - 3048 - Water
 - B. Fruitland - 3238 - Water
 - C. Pictured Cliff - 3388 - Gas
4. The casing program is shown on Form 9-331C and all casing will be new.
5. The lessee's pressure control equipment schematics are attached along with minimum specifications, testing procedures and frequencies.
6. The type, estimated volumes and characteristics of the circulating mediums are as follows.
 - A. From 0 feet to 200 feet - Natural mud.
 - B. From 200 feet to 3550 feet - Fermaloid non dispersed mud containing 167 sacks gal, 67 sacks permaloid, 10 sacks C.M.C.
7. The auxiliary equipment to be used will be floats at the bit and a sub on the floor with a full opening valve to be stabbed into the drill pipe when the kelly is not in the string.
8. This well is in an area which is almost completely developed; therefore, we will not have a testing and coring program. The logging program will be as follows:
 - A. M. S. Induction.
 - B. Gamma Ray Density
 - C. Gamma Ray Correlation
 - D. Cement Bond
9. There are no abnormal pressures, temperatures, or hydrogen sulphide problems expected in this highly - developed area.
10. The anticipated starting date for this well is December 10, 1977.

RECEIVED

OCT 12 1977

U. S. GEOLOGICAL SURVEY
FEDERAL BLDG.

