

UNITED STATES
DEPARTMENT OF THE INTERIOR
GEOLOGICAL SURVEY30-039-21611
3. LEASE DESIGNATION AND SERIAL NO.

Contract #152

6. IF INDIAN, ALLOTTEE OR TRIBE NAME

Jicarilla Apache

7. UNIT AGREEMENT NAME

8. FARM OR LEASE NAME

Jicarilla

9. WELL NO.

4-A

10. FIELD AND POOL, OR WILDCAT

Blanco Mesaverde

11. SEC., T., R., M., OR BLK.
AND SURVEY OR AREA

Sec. 8, T26N, R5W, NMPM

12. COUNTY OR PARISH

13. STATE

Rio Arriba

New Mexico

APPLICATION FOR PERMIT TO DRILL, DEEPEN, OR PLUG BACK

1a. TYPE OF WORK

DRILL ☒DEEPEN ☐PLUG BACK ☐

b. TYPE OF WELL

OIL
WELL ☐GAS
WELL ☒

OTHER

SINGLE
ZONE ☒MULTIPLE
ZONE ☐

2. NAME OF OPERATOR

Consolidated Oil & Gas, Inc.

3. ADDRESS OF OPERATOR

1860 Lincoln Street, Denver, Colorado 80295

4. LOCATION OF WELL (Report location clearly and in accordance with any State requirements.*)

At surface 790' FNL & 790' FEL

At proposed prod. zone Same as above

14. DISTANCE IN MILES AND DIRECTION FROM NEAREST TOWN OR POST OFFICE*

35 miles northwest of Lindrith, New Mexico

15. DISTANCE FROM PROPOSED*

LOCATION TO NEAREST
PROPERTY OR LEASE LINE, FT.
(Also to nearest drilg. unit line, if any) 790'

16. NO. OF ACRES IN LEASE

320

17. NO. OF ACRES ASSIGNED
TO THIS WELL

N/320

18. DISTANCE FROM PROPOSED LOCATION*

TO NEAREST WELL, DRILLING, COMPLETED,
OR APPLIED FOR, ON THIS LEASE, FT. 1050'

19. PROPOSED DEPTH

5950

20. ROTARY OR CABLE TOOLS

Rotary

21. ELEVATIONS (Show whether DF, RT, GR, etc.)

6941 GR

22. APPROX. DATE WORK WILL START*

May 1, 1978

23.

PROPOSED CASING AND CEMENTING PROGRAM

SIZE OF HOLE	SIZE OF CASING	WEIGHT PER FOOT	SETTING DEPTH	QUANTITY OF CEMENT
15"	10-3/4"	40.5#	300'	300 sx. circulated
8-3/4"	7"	23#	3821'	250 sx.
6-1/4"	4-1/2"	10.5#	5950'	250 sx.

1. Drill 15" hole to 300'+. Set new 10-3/4" casing and circulate cement.
2. WOC 12 hrs. Install double ram BOP. Test 10-3/4" to 600 psi.
3. Drill 8-3/4" hole to 3821'+. Set new 7" casing and cement. WOC 12 hrs. and test to 1000 psi.
4. Nipple up for air drilling. Drill 6-1/4" hole with air to 7336' and log.
5. Run and cement 4-1/2" liner.
6. Perforate and stimulate the Mesaverde zone.
7. The north/2 of Section 8 is dedicated to this well.
8. This acreage is dedicated to a gas contract.

IN ABOVE SPACE DESCRIBE PROPOSED PROGRAM: If proposal is to deepen or plug back, give data on present productive zone and proposed new productive zone. If proposal is to drill or deepen directionally, give pertinent data on subsurface locations and measured and true vertical depths. Give blowout preventer program, if any.

24.

SIGNED

D.T. Stogner, Jr.

TITLE

Chief Drilling and
Production Engineer

DATE Jan. 5, 1978

(This space for Federal or State office use)

PERMIT NO.

APPROVAL DATE

APPROVED BY

TITLE

CONDITIONS OF APPROVAL, IF ANY:

Abel

RECEIVED

JAN 10 1978

U. S. GEOLOGICAL SURVEY
DURANGO, COLO.

NEW MEXICO OIL CONSERVATION COMMISSION
WELL LOCATION AND ACERAGE DEDICATION PLAT

All distances must be from the outer boundaries of the Section

Operator CONSOLIDATED OIL AND GAS, INC.			Lease JICARILLA		Well No. 4 - A
Unit Letter A	Section 8	Township 26 NORTH	Range 5 WEST	County RIO ARriba	
Acres: Footage Location of Well:					
790 feet from the NORTH line and		790 feet from the EAST line			
Ground Level Elev. 6941	Producing Formation Mesaverde	Pool Blanco ✓	Dedicated Acreage 320 Acres ✓		

1. Outline the acreage dedicated to the subject well by colored pencil or hatchure marks on the plat below.
2. If more than one lease is dedicated to the well, outline each and identify the ownership thereof (both as to working interest and royalty).
3. If more than one lease of different ownership is dedicated to the well, have the interests of all owners been consolidated by communitization, unitization, force-pooling, etc?

() Yes () No If answer is "yes," type of consolidation

If answer is "no," list the owners and tract descriptions which have actually consolidated. (Use reverse side of this form if necessary.)

No allowable will be assigned to the well until all interests have been consolidated (by communitization, unitization, forced-pooling, or otherwise) or until a non standard unit, eliminating such interests, has been approved by the Commission.

CERTIFICATION

I hereby certify that the information contained herein is true and complete to the best of my knowledge and belief.

D.T. Stogner Jr.

Name
D. T. Stogner, Jr.

Position **Chief Drilling and Production Engineer**

Company
Consolidated Oil & Gas, Inc.

Date
Jan. 5, 1978

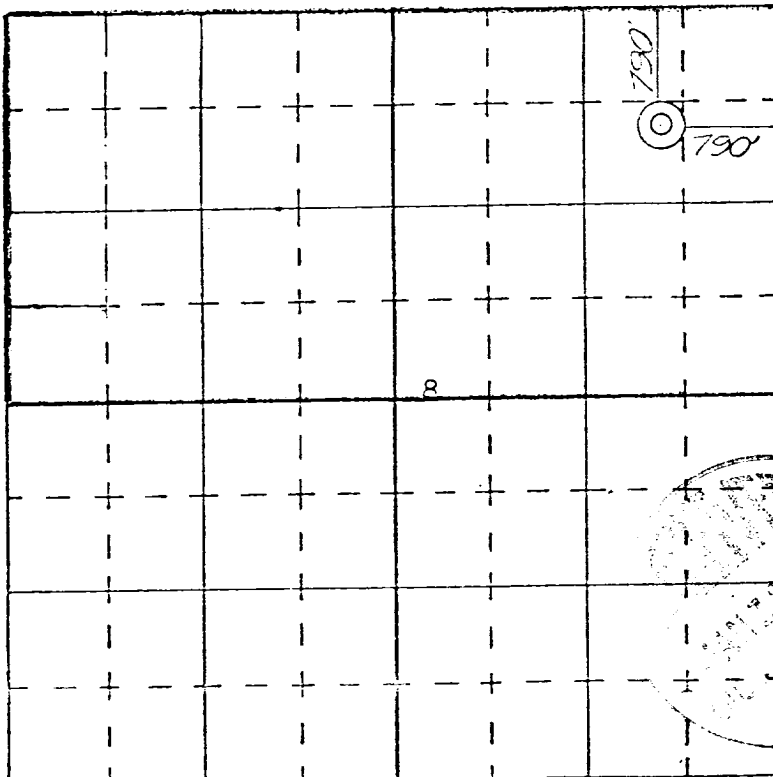
I hereby certify that the well location shown on this plat was plotted from field notes of actual surveys made by me or under my supervision, and that the same is true and correct to the best of my knowledge and belief.

30 November 1977

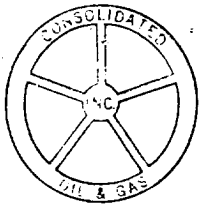
Date Surveyed

James P. Leese

Registered Professional Engineer
and/or Land Surveyor **James P. Leese**



SCALE—4 INCHES EQUALS 1 MILE



Consolidated Oil & Gas, Inc.

LINCOLN TOWER BUILDING
1860 LINCOLN STREET
DENVER, COLORADO 80295
(303) 861-5252

January 5, 1978

U. S. Geological Survey
P. O. Box 1809
Durango, Colorado 81301

Re: Application for Permit to Drill
Jicarilla No. 4-A
Rio Arriba County, New Mexico

Gentlemen:

Following is the information requested in NTL-6 to accompany the permit to drill:

1. Location: 790' FNL & 790' FEL Section 8, T26N, R5W, NMPM
Rio Arriba County, New Mexico
2. Elevation of Unprepared Ground: 6941'
3. Geological Name of Surface Formation: San Jose
4. Type Drilling Tools: Rotary
5. Proposed Drilling Depth: 5950'
6. Estimated Tops of Geological Markers: Pictured Cliff 3516';
Cliff House 5209'; Pt. Lookout 5723'.
7. Estimated Depths at Which Anticipated Gas or Oil Bearing Formations Expected: Pictured Cliff 3516'; Cliff House 5209';
Pt. Lookout 5723'.
8. Casing Program and Setting Depth:

RECEIVED

JAN 10 1978

U. S. GEOLOGICAL SURVEY
DURANGO, COLO.

	<u>Size</u>	<u>Weight</u>	<u>Grade</u>	<u>Condition</u>	<u>Setting Depth</u>
Surface	10-3/4"	40.5#	H-40	New	300'
Intermediate	7"	23#	K-55	New	3821'
Liner	4-1/2"	10.5#	K-55	New	5950'

J

9. Casing Setting Depth and Cementing:

- a. Surface casing will be set at 300'. Cement will be circulated to surface with approximately 250 sx. neat cement containing 2% CaCl_2 .
- b. Intermediate casing will be set to approximately 300' below the top of the Pictured Cliff or approximately 3821'. Cement will be approximately 150 sx. 65/25 Pozmix containing 12% gel followed by 100 sx. neat containing 2% CaCl_2 .
- c. Liner will be set to total depth of approximately 5950' using estimated 250 sx. 50/50 Pozmix containing 4% gel and some lost circulation material (Tuf-plug or Gilsonite).

Note: Volume of cement to be determined after running Caliper log.

10. Pressure Control Equipment: See attached diagram "A"

11. Circulating Media: 0-300' fresh water spud mud; 300-3821' fresh water low solid mud with following properties:

Viscosity 32-38 sec., water loss 20-6 cc, weight 8.5-9.0 ppg. with heavier weights if required by well conditions; 3821'-5950' air or gas with conversion to mud of above characteristics if hole becomes wet.

12. Testing, Logging and Coring Programs:

- a. Open hole logs will be run prior to running intermediate casing and production liner.
- b. Coring is not planned.

13. Abnormal Pressure or Temperature and Hydrogen Sulfide Gas:


We do not anticipate abnormal pressure, temperature, or hydrogen sulfide gas; however, remote control blowout preventer as shown on attached diagram "A" will be installed.

U. S. Geological Survey
January 5, 1978
Page 3

14. Anticipated Starting Date: Drilling operations should start shortly after April 5, 1978.
15. Other Facets of the Proposed Operations: None

Yours very truly,

CONSOLIDATED OIL & GAS, INC.


D. T. Stogner, Jr.
Chief Drilling and Production Engineer

DTS:lt
Attach.

DEVELOPMENT PLAN FOR SURFACE USE

Jicarilla No. 4-A

Consolidated Oil & Gas, Inc. - Operator

Jicarilla Apache Tribal Contract #152
NE/4 NE/4 Sec. 8, T26N, R5W NMPM
Rio Arriba County, New Mexico

1. Existing Roads

See enclosed topographic map (Exhibit 1) which shows existing improved and unimproved roads. The town of Lindrith is located approximately 35 miles southeast.

2. Planned Access Roads

See enclosed topographic map. This location will require approximately 240' of new 12' wide road construction.

3. Location of Existing Wells

See enclosed topographic map

4. Location of Existing and/or Proposed Facilities

See enclosed topographic map showing location of wells and facilities operated by Consolidated Oil & Gas, Inc. If production is encountered, the tank battery and other required producing equipment will be located per attached completion plat. (Exhibit 2)

5. Location and Type of Water Supply

Water for drilling will be trucked approximately 10 miles from Cereza Canyon.

6. Source of Construction Materials

No additional construction material will be required.

7. Methods of Handling Waste Disposal

All waste material will be contained by earthen and steel pits. Earthen pits will be subsequently backfilled and buried. A portable chemical toilet will be furnished for drilling personnel.

8. Ancillary Facilities

No separate drill campsites are proposed.

9. Wellsite Layout

The drilling site location will be graded and will approximate 200 x 250 with natural drainage to the north. Care will be taken while grading to control erosion. A 10' cut will be required on the southeast corner of the wellsite. See attached drillsite layout. (Exhibit 3)

10. Plans for Restoration of Surface

- A. Following drilling and completion operations, all equipment and material not needed for operations will be removed. Pits containing fluid will be fenced until filled with any additional pits filled and the location cleaned of all trash and junk.
- B. After abandonment, any special rehabilitation and/or revegetation requirements (reseed with seed mixture No. 2) will be complied with and accomplished as expeditiously as possible. All pits should be filled and leveled within 90 days after abandonment.

11. Other Information

This location is on the northern slope of an area of rolling hills with some sharp relief. The sandy clay soil is covered with Juniper and Pinon with some sage ground cover. There are no occupied dwellings nearby. The surface is owned by the Jicarilla Apache Indians.

12. Operator's Representative

Consolidated Oil & Gas, Inc.
Owen B. Whitenburg
Senior Drilling Engineer
Farmington, New Mexico 87401
Phone: (505) 325-7509 (Office)
(505) 325-2213 (Home)

Jicarilla 4-A

Page 3

13. Certification

I hereby certify that I, or persons under my direct supervision, have inspected the proposed drillsite and access route; that I am familiar with the conditions which presently exist; that the statements made in this plan are, to the best of my knowledge, true and correct; and that the work associated with the operations proposed herein will be performed by Consolidated Oil & Gas, Inc. and its contractors and sub-contractors in conformity with this plan and the terms and conditions under which it is approved.

1-6-78
Date

D. T. Stogner, Jr.
D. T. Stogner, Jr.
Chief Drilling and Production Engineer

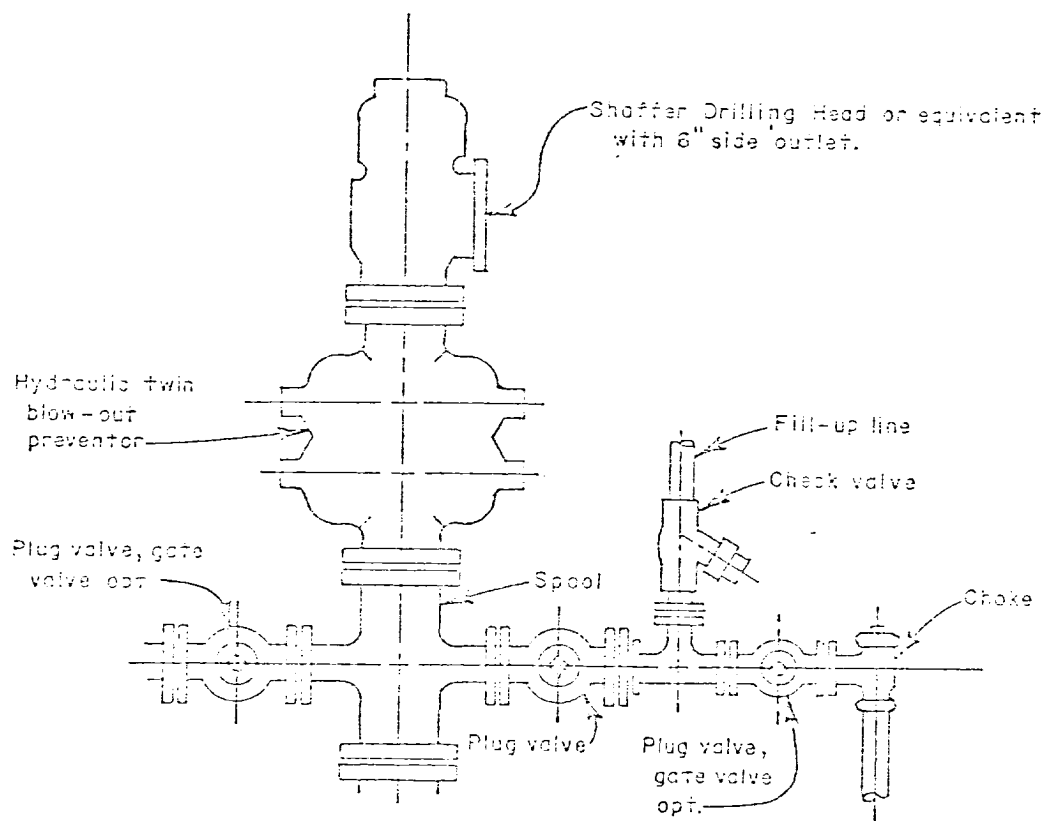


Diagram "A"
 JICARILLA No. 4A
 NE/4 NE/4 SEC. 8
 T-26N R-5W
 RIO ARRIBA, N.M.

Jicarilla #4A

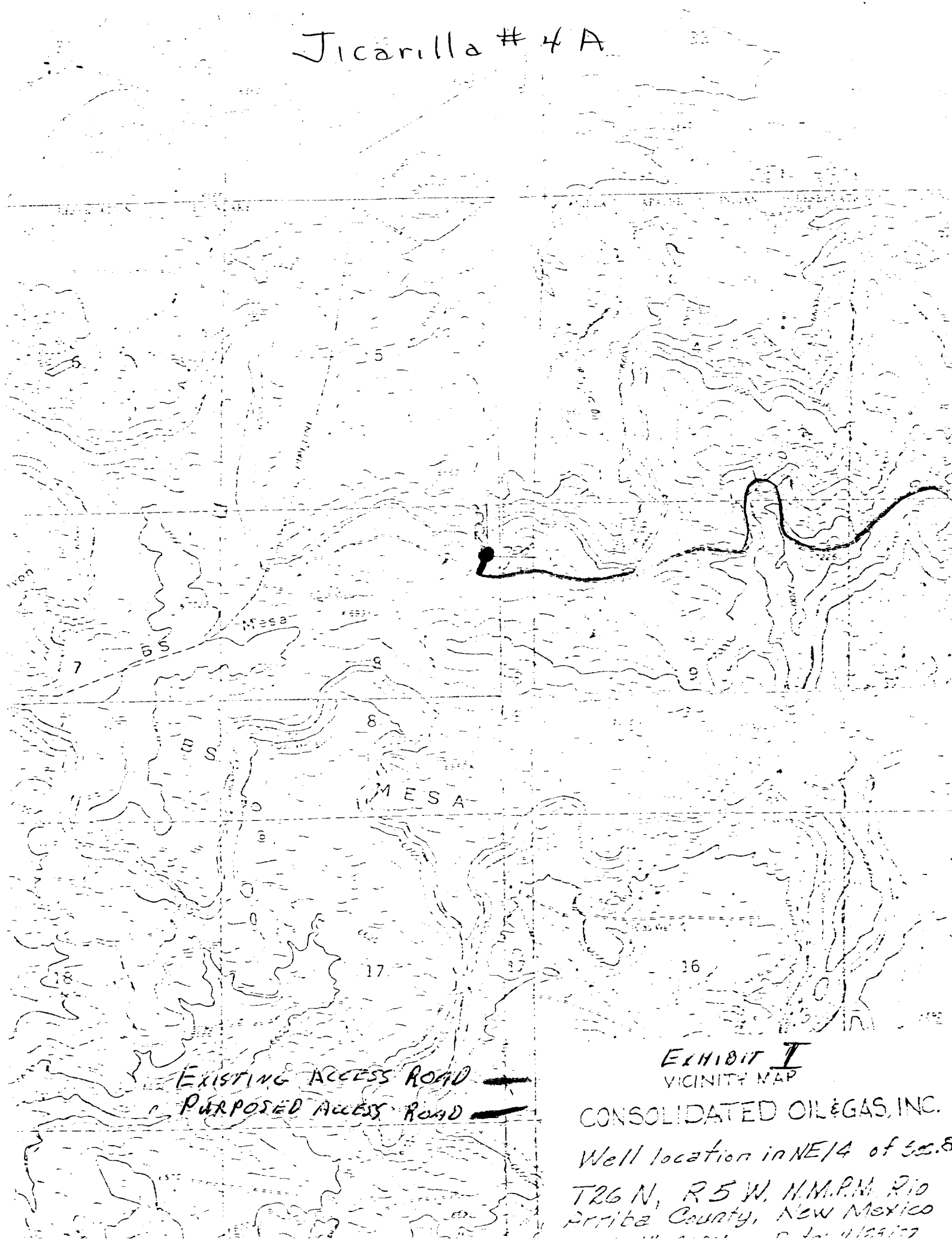


EXHIBIT I
VICINITY MAP

CONSOLIDATED OIL & GAS, INC.

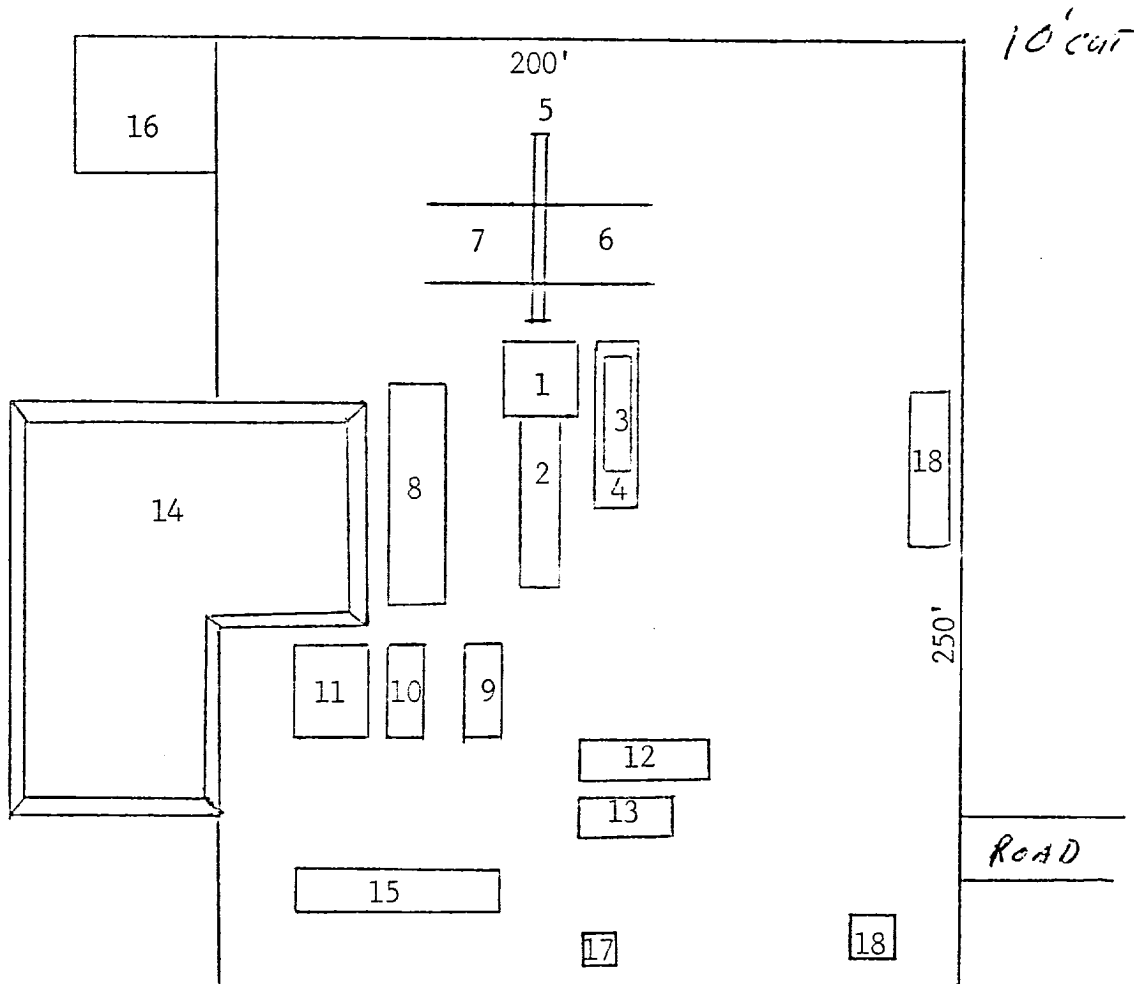
Well location in NE 1/4 of Sec. 8

T26 N, R5 W, N.M.P.M. Rio
Arriba County, New Mexico

JICARILLA NO. 4-A
NE 1/4 NE 1/4 SEC. 8, T-26N, R-5W
RIO ARRIBA, N.M.



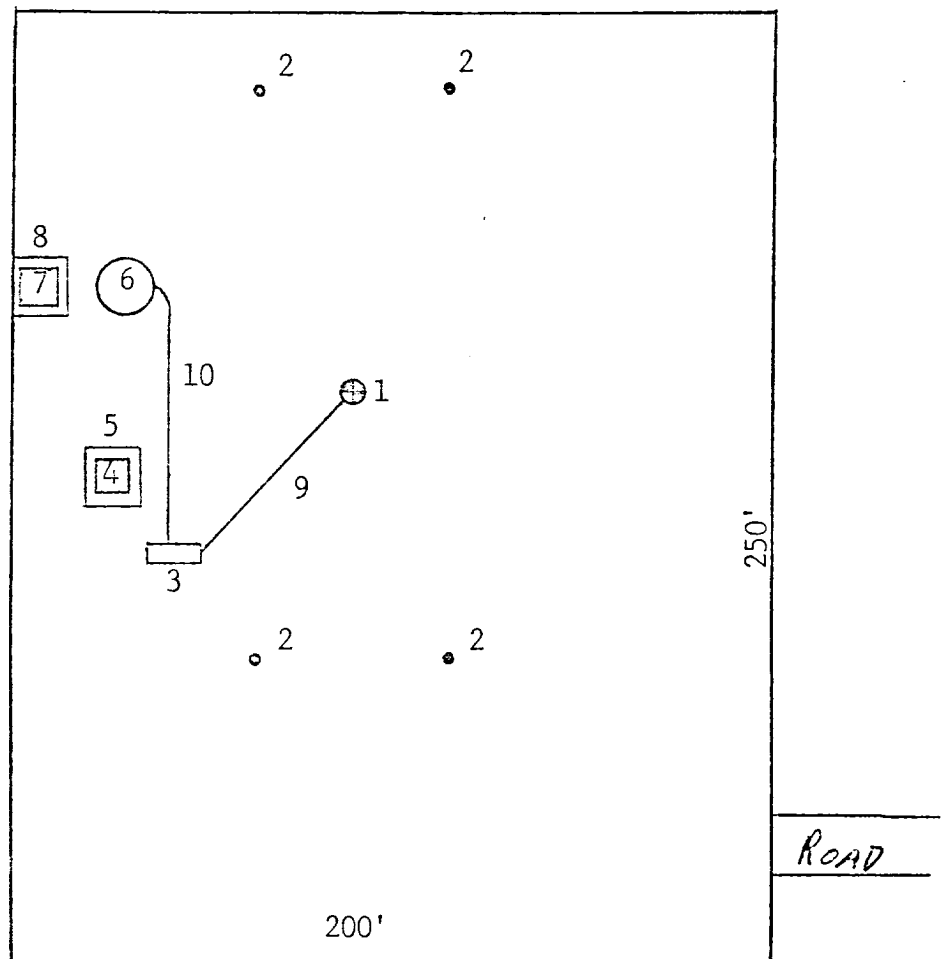
- Sub.
- Drive In Unit
- Doghouse
- Water Tank
- Walk (Cat)
- Pipe Racks
- Pipe Racks
- Steel Working Pit
- Pump
- Pump
- Mud Storage
- Light Plant
- Change House
- Reserve Pit
- Air Compressor
- Blow Pit
- Latrine (Chemical)
- Trailer House (2)



JICARILLA No 4-A
NE/4 NE/4 SEC. 8, T-26N, R-5W
RIO ARRIBA, NM



1. Well
2. Dead Men
3. Prod. Unit
4. Water Pit
5. Fence
6. 300-Bbl. Oil Tank
7. Water Pit
8. Fence
9. 2" Buried Flow Line
0. 1½" Oil Line



1" equals 50'