

UNITED STATES
DEPARTMENT OF THE INTERIOR
GEOLOGICAL SURVEY

APPLICATION FOR PERMIT TO DRILL, DEEPEN, OR PLUG BACK

1a. TYPE OF WORK

DRILL ☒DEEPEN ☐PLUG BACK ☐

b. TYPE OF WELL

OIL
WELL ☐GAS
WELL ☒

OTHER

SINGLE
ZONE ☒MULTIPLE
ZONE ☐

2. NAME OF OPERATOR

Consolidated Oil & Gas, Inc.

3. ADDRESS OF OPERATOR

1860 Lincoln Street, Denver, Colorado 80295

4. LOCATION OF WELL (Report location clearly and in accordance with any State requirements.*)

At surface

1190' FSL & 1450' FEL

At proposed prod. zone

Same as above

14. DISTANCE IN MILES AND DIRECTION FROM NEAREST TOWN OR POST OFFICE*

34 miles northwest of Lindrith, New Mexico

15. DISTANCE FROM PROPOSED*

LOCATION TO NEAREST
PROPERTY OR LEASE LINE, FT.
(Also to nearest drlg. unit line, if any)

1190'

16. NO. OF ACRES IN LEASE

1298.64

17. NO. OF ACRES ASSIGNED
TO THIS WELL

320

18. DISTANCE FROM PROPOSED LOCATION*

TO NEAREST WELL, DRILLING, COMPLETED,
OR APPLIED FOR, ON THIS LEASE, FT.

940'

19. PROPOSED DEPTH

5970'

20. ROTARY OR CABLE TOOLS

Rotary

21. ELEVATIONS (Show whether DF, RT, GR, etc.)

6770 GR

22. APPROX. DATE WORK WILL START*

April 15, 1978

23.

PROPOSED CASING AND CEMENTING PROGRAM

SIZE OF HOLE	SIZE OF CASING	WEIGHT PER FOOT	SETTING DEPTH	QUANTITY OF CEMENT
15"	10-3/4"	40.5#	300'	300 sx. circulate
8-3/4"	7"	23#	3830'	250 sx.
6-1/4"	4-1/2"	10.5#	5970'	200 sx.

1. Drill 15" hole to 300'+. Set 10-3/4" casing.
2. Circulate cement to surface. WOC 12 hrs.
3. Install double ram hydraulic BOP. Pressure test casing and BOP to 600 psi.
4. Drill 8-3/4" hole to 3830' with fresh water gel mud. Set 7" casing and cement with 250 sx. WOC 12 hrs.
5. Rig up rotating head and air drill 6-1/4" hole to 5970'. Run logs
6. Set 4-1/2" liner and cement with 200 sx.
7. Perforate and stimulate the Mesaverde.
8. The E/2 of this section is dedicated to the Mesaverde zone.
9. This acreage is dedicated to a gas sales contract.

IN ABOVE SPACE DESCRIBE PROPOSED PROGRAM: If proposal is to deepen or plug back, give data on present productive zone and proposed new productive zone. If proposal is to drill or deepen directionally, give pertinent data on subsurface locations and measured and true vertical depths. Give blowout preventer program, if any.

24.

SIGNED

O.T. Stogner

TITLE

Chief Drilling and
Production Engineer

DATE Jan. 11, 1978

(This space for Federal or State office use)

PERMIT NO.

APPROVAL DATE

APPROVED BY

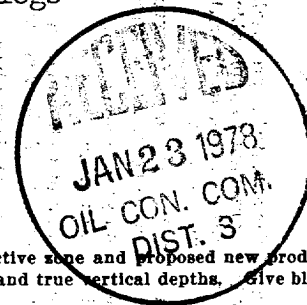
TITLE

DATE

CONDITIONS OF APPROVAL, IF ANY:

*Abel**st*

*See Instructions On Reverse Side

U. S. GEOLOGICAL SURVEY
DURANGO, COLO.

JAN 13 1978

**NEW MEXICO OIL CONSERVATION COMMISSION
WELL LOCATION AND ACERAGE DEDICATION PLAT**

All distances must be from the outer boundaries of the Section

Operator CONSOLIDATED OIL AND GAS, INC.			Lease NORTHWEST SEVENTEEN		Well No. 1-A
Unit Letter 0	Section 7	Township 26 NORTH	Range 4 WEST	County RIO ARriba	
Actual Footage Location of Well:					
1190 feet from the SOUTH line and		1450 feet from the EAST line			
Ground Level Elev. 6770	Producing Formation Mesa Verde	Pool Blanco Mesa Verde ✓	Dedicated Acreage: 320 ✓ Acres		

1. Outline the acreage dedicated to the subject well by colored pencil or hachure marks on the plat below.
2. If more than one lease is dedicated to the well, outline each and identify the ownership thereof (both as to working interest and royalty).
3. If more than one lease of different ownership is dedicated to the well, have the interests of all owners been consolidated by communitization, unitization, force-pooling, etc?

() Yes () No If answer is "yes," type of consolidation

If answer is "no," list the owners and tract descriptions which have actually consolidated. (Use reverse side of this Form if necessary.)

No allowable will be assigned to the well until all interests have been consolidated (by communitization, unitization, forced-pooling, or otherwise) or until a non standard unit, eliminating such interests, has been approved by the Commission.

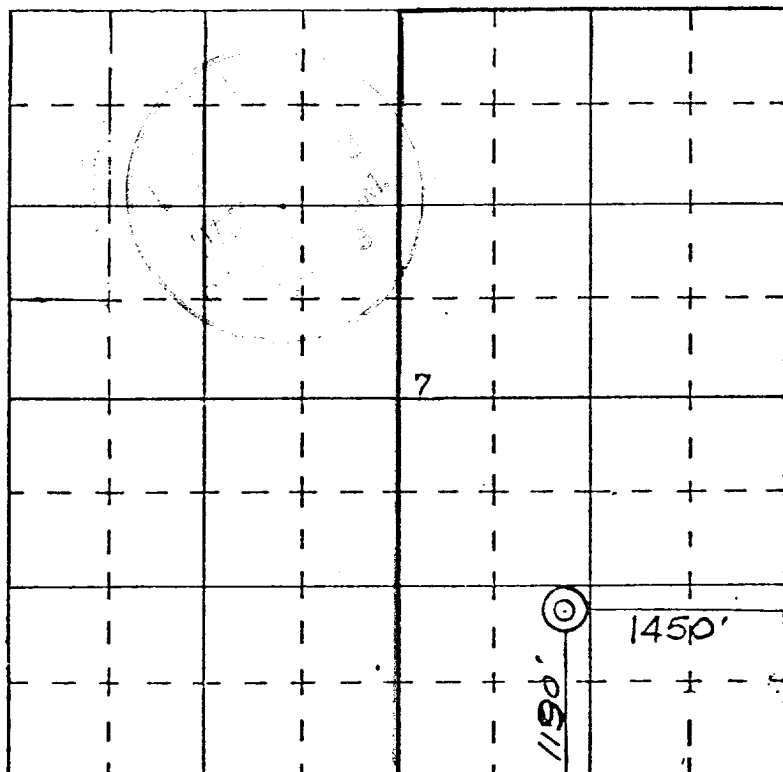
CERTIFICATION

I hereby certify that the information contained herein is true and complete to the best of my knowledge and belief.

D. T. Stogner, Jr.
Name **D. T. Stogner, Jr.**
Chief Drilling and Production
Position **Engineer**
Consolidated Oil & Gas, Inc.
Company
January 11, 1978
Date

I hereby certify that the well location shown on this plat was plotted from field notes of actual surveys made by me or under my supervision, and that the same is true and correct to the best of my knowledge and belief.

9 May 1977
Date Surveyed
James P. Leese
Registered Professional Engineer
and/or Land Surveyor **James P. Leese**



SCALE—4 INCHES EQUALS 1 MILE