

UNITED STATES
DEPARTMENT OF THE INTERIOR
GEOLOGICAL SURVEY

30-039-21979

APPLICATION FOR PERMIT TO DRILL, DEEPEN, OR PLUG BACK

1a. TYPE OF WORK
 DRILL DEEPEN PLUG BACK
 b. TYPE OF WELL
 OIL WELL GAS WELL OTHER SINGLE ZONE MULTIPLE ZONE

2. NAME OF OPERATOR

3. ADDRESS OF OPERATOR
 Oxy Petroleum Inc.

5000 Stockdate Hwy, Bakersville, California 93309

4. LOCATION OF WELL (Report location clearly and in accordance with any State requirements.*)
 At surface

1100' FNL & 790' FWL
 At proposed prod. zone

14. DISTANCE IN MILES AND DIRECTION FROM NEAREST TOWN OR POST OFFICE*

15. DISTANCE FROM PROPOSED* LOCATION TO NEAREST PROPERTY OR LEASE LINE, FT. (Also to nearest drlg. unit line, if any)

16. NO. OF ACRES IN LEASE
 2557.76

17. NO. OF ACRES ASSIGNED TO THIS WELL
 320.312

18. DISTANCE FROM PROPOSED LOCATION* TO NEAREST WELL, DRILLING, COMPLETED, OR APPLIED FOR, ON THIS LEASE, FT.

19. PROPOSED DEPTH
 5600

20. ROTARY OR CABLE TOOLS
 Rotary

21. ELEVATIONS (Show whether DF, RT, GR, etc.)

6513 g.l.

22. APPROX. DATE WORK WILL START*
 December 20, 1978

23. PROPOSED CASING AND CEMENTING PROGRAM

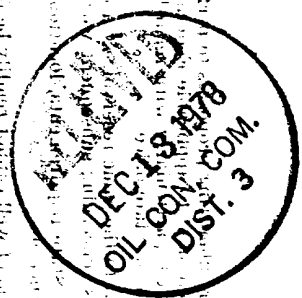
SIZE OF HOLE	SIZE OF CASING	WEIGHT PER FOOT	SETTING DEPTH	QUANTITY OF CEMENT
13 3/4	9 5/8"		200'	200 Sk
8 3/4	7	20#	3500'	300 Sk
6 1/4	4 1/2	10.5#	5600'	350 SK.

See Attachments.
 Gas under this lease is dedicated to a contract.

LIVE

DEC 11 1978

U. S. GEOLOGICAL SURVEY



IN ABOVE SPACE DESCRIBE PROPOSED PROGRAM: If proposal is to deepen or plug back, give data on present productive zone and proposed new productive zone. If proposal is to drill or deepen directionally, give pertinent data on subsurface locations and measured and true vertical depths. Give blowout preventer program, if any.

24. SIGNED John Alexander TITLE Agent DATE 11-29-78

(This space for Federal or State office use)

PERMIT NO. _____ APPROVAL DATE _____

APPROVED BY _____ TITLE _____ DATE _____

CONDITIONS OF APPROVAL, IF ANY:
ok Frank

NEW MEXICO OIL CONSERVATION COMMISSION
WELL LOCATION AND ACREAGE DEDICATION PLAT

Form C-102
Supersedes C-128
Effective 1-1-65

All distances must be from the outer boundaries of the Section.

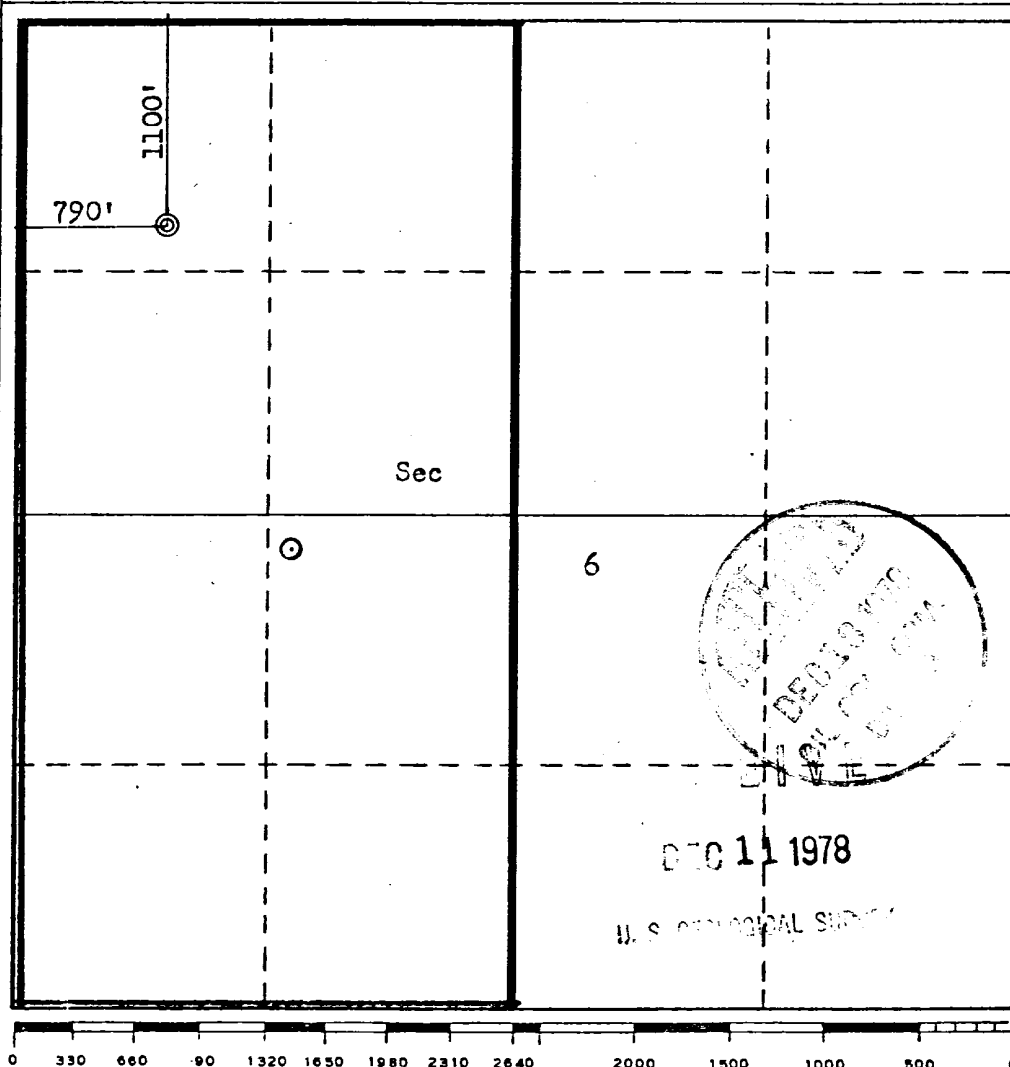
Operator OXY PETROLEUM, INC.		Lease JICARILLA WEST			Well No. 9A
Unit Letter D	Section 6	Township 26N	Range 5W	County Rio Arriba	
Actual Footage Location of Well: 1100 feet from the North line and 790 feet from the West line					
Ground Level Elev. 6513	Producing Formation Mesa Verde		Pool Blanco Mesa Verde	Dedicated Acreage: 320 319.12 Acres	

1. Outline the acreage dedicated to the subject well by colored pencil or hachure marks on the plat below.
2. If more than one lease is dedicated to the well, outline each and identify the ownership thereof (both as to working interest and royalty).
3. If more than one lease of different ownership is dedicated to the well, have the interests of all owners been consolidated by communitization, unitization, force-pooling, etc?

Yes No If answer is "yes," type of consolidation _____

If answer is "no," list the owners and tract descriptions which have actually been consolidated. (Use reverse side of this form if necessary.) _____

No allowable will be assigned to the well until all interests have been consolidated (by communitization, unitization, forced-pooling, or otherwise) or until a non-standard unit, eliminating such interests, has been approved by the Commission.



CERTIFICATION

I hereby certify that the information contained herein is true and complete to the best of my knowledge and belief.

John Alexander
Name

Agent

Position

Oxy Petroleum, Inc.

Company

11-29-78

Date

I hereby certify that the well location shown on this plat was plotted from field notes of actual surveys made by me or under my supervision, and that the same is true and correct to the best of my knowledge and belief.

Date Surveyed

November 29, 1978
Registered Professional Engineer
and/or Land Surveyor

John Alexander
Fred B. Kerr, Jr.

Certificate No. 3950
KERR, JR.

OXY PETROLEUM, INC.

FORMATION INFORMATION AND DRILLING PRACTICES

WELL: JICARILLA WEST 9A

LOCATION: 1100' FNL & 790' FWL
Sec. 6, Twn. 26N, Rng. 5W.,
Rio Arriba County, New Mexico

LEASE NUMBER: CONTRACT 152

LIVE

DEC 11 1978

U. S. GEOLOGICAL SURVEY

1. SURFACE FORMATION

San Jose'

2. ESTIMATED TOPS OF IMPORTANT GEOLOGIC MARKERS

Kirtland	2669
Fruitland	2857
Pictured Cliffs	3127
Cliff House	4807
Menefee	4919
Point Lookout	5327
Mancos	5437
T. D.	5600

3. HYDROCARBON, WATER OR MINERAL BEARING FORMATIONS

3290' Gas
4970 Gas
5490 Gas

4. PROPOSED CASING PROGRAM

0-250'	9 5/8 32.3 lb./ft. new casing. Cement with 200 sacks Class "B" cement with 2% Calcium Chloride and 1/4 lb./sk. Flocele.
0-3500'	7" 20 lb./ft. new casing. Cement with 150 sacks 65-35 Pozmix followed by 100 sacks Class "B" with 2% Calcium Chloride.
3300'-5600'	4 1/2" 10.5 lb./ft. new casing. Cement liner with 350 sacks 50-50 Pozmix with 2% Gel, 12 1/2 lb. Gilsonite per sack and 1/4 lb. Flocele per sack.

5. PRESSURE CONTROL EQUIPMENT - BLOWOUT PREVENTER

The attached schematic shows the type of blowout preventer to be used while drilling. The unit will be tested to 800 psi prior to drilling from under surface pipe by pressuring through casing valves with bline ram closed. This procedure will be repeated with the pipe rams closed on a joint of drill pipe. Operation of the hydraulic system will be checked daily.

5156

DEC 11 1978

U. S. GEOLOGICAL SURVEY

6. DRILLING FLUIDS

<u>DEPTH</u>	<u>TYPE</u>	<u>VISCOSITY</u>	<u>WEIGHT</u>	<u>FLUID LOSS</u>
0-250'	Gel-lime	35-55	8.4-9.0	NC
250-3500'	Non-Dispersed	30-45	8.4-9.0	4-8
3500-5600	Air			

7. AUXILIARY EQUIPMENT

- A. Bit float
- B. Rotating drilling head

8. LOGGING - CORING - DRILL STEM TESTING

LOGGING: Intermediate - IES, FDC-CNL, G-R
Liner - IES, FDC-SNL, GR

CORING: None

TESTING: No drill stem test planned. Will measure gas flows as encountered.

9. ABNORMAL TEMPERATURES, PRESSURES OR HAZARDOUS CONDITIONS

None expected.

10. STARTING DATE

Anticipated starting date is December 20, 1978. Approximately fifteen days will be needed to build roads, location and drill to total depth. If commercial, completion will begin immediately and require about seven days to complete.

7-11-78

DEC 11 1978

U. S. GEOLOGICAL SURVEY



SHAFFER HYDRAULIC BLOWOUT PREVENTERS
(Patented)

TYPE LWS PREVENTERS—8", 3000 Lb. & 5000 Lb.—10", 5000 Lb.
12", 3000 Lb.—13 5/8", 5000 Lb.—16", 3000 Lb.

PARTS AND DIMENSIONAL ILLUSTRATIONS

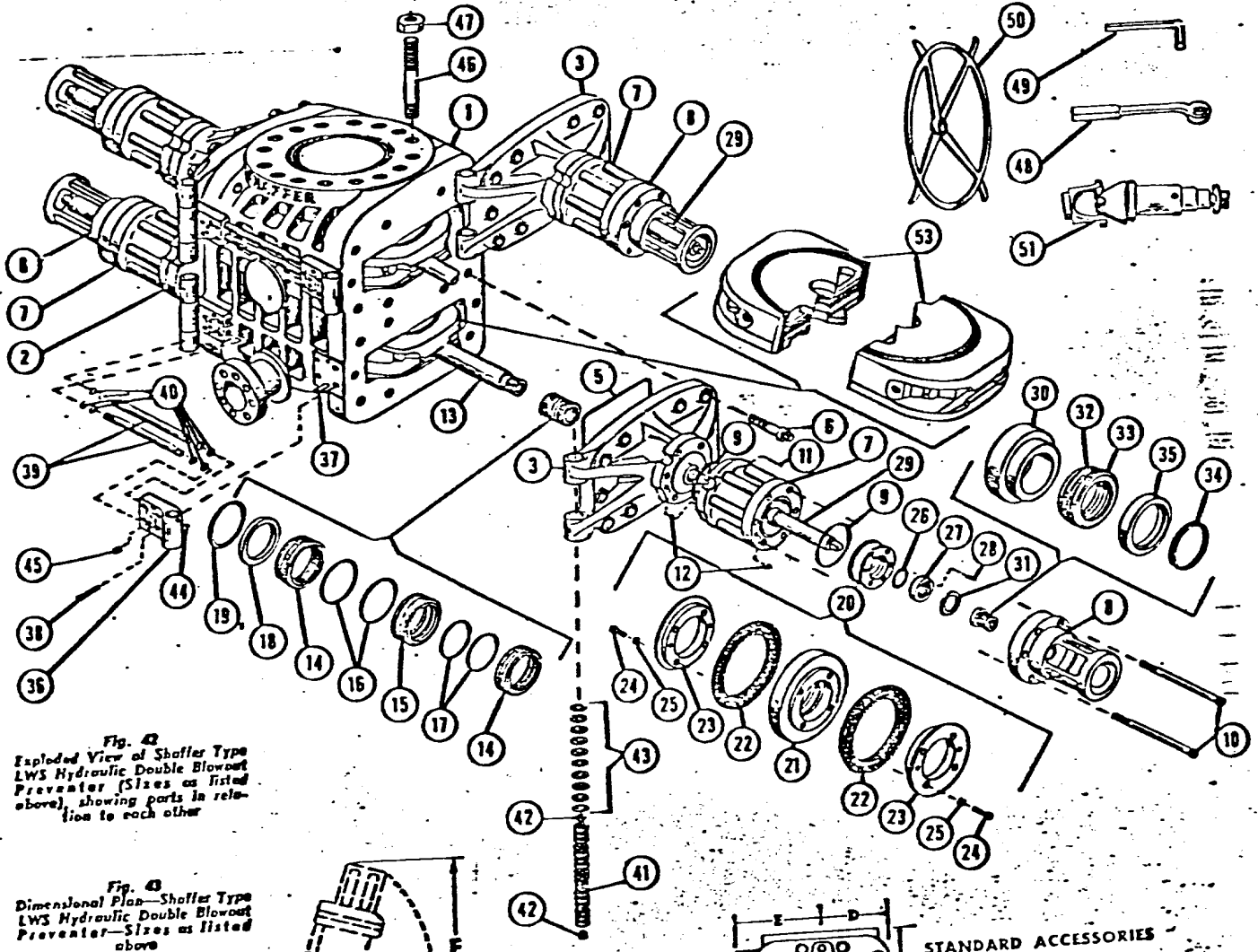


Fig. 42
Exploded View of Shaffer Type LWS Hydraulic Double Blowout Preventer (Sizes as listed above), showing parts in relation to each other

Fig. 43
Dimensional Plan—Shaffer Type LWS Hydraulic Double Blowout Preventer—Sizes as listed above

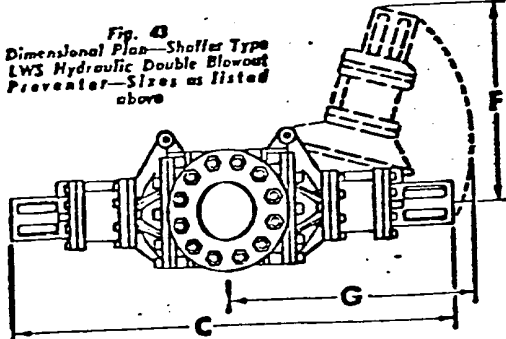
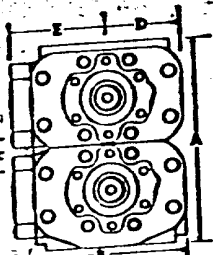


Fig. 44
Dimensional End Elevation—Shaffer Type LWS Hydraulic Double Blowout Preventer—Sizes as listed above



- STANDARD ACCESSORIES
- (50) 4 Hand Wheels
 - (48) 1 Door Wrench
 - (49) 1 Cylinder & Cylinder Head Wrench
 - (51) 4 Universal Joints

DIMENSIONAL AND ENGINEERING DATA ON ABOVE SIZES OF TYPE LWS PREVENTERS
Refer to Figs. 43 and 44

Size	Max. Working Pressure, psi	Test Pressure, psi	Vertical Bore	Max. Stem Size	Approx. Weight Lbs.		A				B	C	D	E	F	G	Door Open To Close Range	Door Open To Close Range	U.S. Gate Fluid To Close Range	U.S. Gate Fluid To Open Range
					Studded Flange		Height													
					Single	Double	Studded Flange	Ball Flange	Studded Flange	Ball Flange										
8"	3,000	6,000	8"	7"	2,500	29 1/2"	41 1/2"	23 1/2"	71 1/2"	11 1/2"	14 1/2"	24"	44"	5.8 to 1	1.89 to 1	2.75	2.8
10"	5,000	10,000	10"	8 1/2"	3,500	29 1/2"	45 1/2"	25 1/2"	71 1/2"	11 1/2"	14 1/2"	24"	44"	5.8 to 1	1.89 to 1	2.75	2.8
12"	3,000	6,000	12 1/2"	10 1/2"	8,000	2,000	34 1/2"	34 1/2"	22"	50 1/2"	28 1/2"	82 1/2"	12 1/2"	18 1/2"	27"	44"	5.8 to 1	1.89 to 1	2.55	2.9
13 5/8"	5,000	10,000	13 5/8"	12 1/2"	8,500	2,000	34 1/2"	34 1/2"	22"	50 1/2"	28 1/2"	82 1/2"	12 1/2"	18 1/2"	27"	44"	5.8 to 1	1.89 to 1	2.55	2.9
16"	3,000	6,000	16"	15 1/2"	2,500	28"	41"	25 1/2"	100 1/2"	18 1/2"	20 1/2"	27"	60"	5.5 to 1	1.79 to 1	2.8	2.9

OXY PETROLEUM, INC.

SURFACE DEVELOPMENT PLAN

WELL: JICARILLA WEST 9A

LOCATION: 1100' FNL & 790' FWL
Sec. 6, Twn. 26N., Rng. 5W.,
Rio Arriba County, New Mexico

LEASE NUMBER: CONTRACT 152

5171

DEC 11 1978

U. S. GEOLOGICAL SURVEY

1. EXISTING ROADS (Shown in Green)

The attached topographic map shows all existing roads within one mile of the proposed location. This location will ajoin an existing Pictured Cliffs location and all existing roads will be used.

2. PLANNED ACCESS ROAD

No new access road will be needed. Existing roads are in good condition and will not have to be upgraded to handle normal drilling activity traffic.

3. LOCATION OF EXISTING WELLS

All wells (water, abandoned, disposal, and drilling) are shown and so labeled on the attached topographic map.

4. LOCATION OF TANK BATTERIES, PRODUCTION FACILITIES AND PRODUCTION, GATHERING AND SERVICE LINES

All production facilities will be contained withing the proposed location. Facilities owned and operated by Oxy are shown on the topographic map.

5. LOCATION AND TYPE OF WATER SUPPLY

Water for drilling will be trucked from several different water holes in the area. Exact location of those holes will depend on rain fall in the area.

6. SOURCE OF CONSTRUCTION MATERIAL

Any construction material required for road or location will be excess material accumulated during building of such sites.

7. METHOD OF HANDLING WASTE DISPOSAL

(Refer to attached well site layout.)
All burnable material will be burned in the trash pit when conditions permit. All nonburnable material (drilling fluids, cuttings, chemicals, etc.) will be held in the reserve pit and buried when dry. Any oil produced while drilling will be trucked from the location prior to leaving the pit to dry. Pits will be fenced during dryout time, then completely back-filled with dirt prior to preparing the location for production or abandonment.

11

DEC 11 1978

U. S. GEOLOGICAL SURVEY

8. ANCILLARY FACILITIES

No ancillary facilities are planned.

9. WELL SITE LAYOUT

The attached layout shows the drilling rig with all facilities. Cut and fill required is also indicated.

10. PLANS FOR RESTORATION OF SURFACE.

Restoration of well site and access road will begin withing ninety days of well completion, weather permitting.

Should the well be abandoned, the drilling site will be reshaped to its approximate former contour. The access road will be plowed and leveled. Both site and road will have top soil replaced and will be reseeded when germination can occur.

Should the well be commercial, that portion of the location not needed for operation, will be repaired as above. The portion needed for daily production operations, and the access road, will be maintained in good repair.

In either case, clean up of the site will include burning any safely burnable material, filling of all pits, carrying away of all non-burnable material and chemicals that cannot be buried. Any oil that has accumulated on the pits will be trucked away.

11. OTHER INFORMATION

General topography of the area may be seen on the attached map.

The drilling site is on the edge of an existing location. The surrounding area is covered with sage brush and native grasses. The soil is clay and sand. Small animals inhabit the area.

The surface is administered by the Bureau of Indian Affairs, and belongs to the Jicarilla Apache Tribe.

There are no occupied dwellings in the area.

There are no archaeological or cultural sites visible on the location. The archaeologist's report is forthcoming.

1171 -

DEC 11 1978

U. S. GEOLOGICAL SURVEY

12..

John Alexander
3E Company, Inc.
P.O. Box 190
Farmington, New Mexico 87401
Phone: 505-327-4020

13.

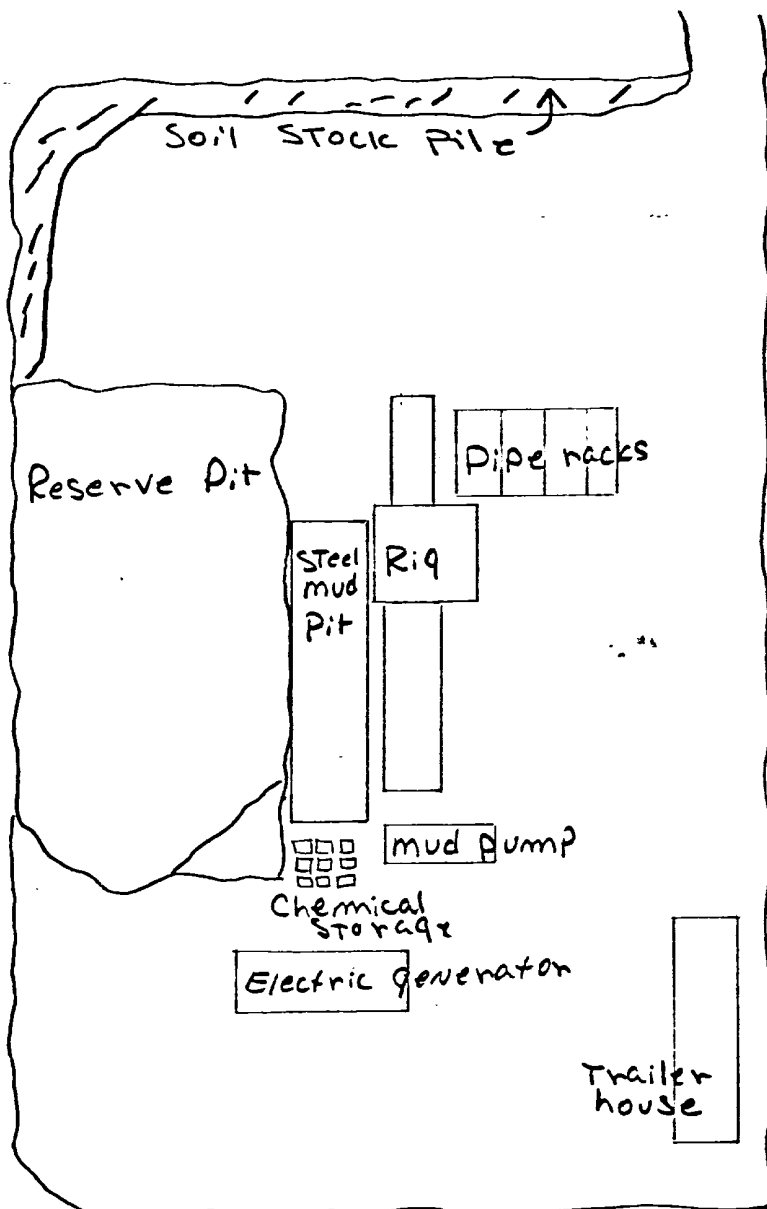
I hereby certify that I or persons under my direct supervision, have inspected the proposed drill site and access route; that I am familiar with the conditions which presently exist; that the statements made in the plan are to the best of my knowledge, true and correct; and, that the work associated with the operations proposed herein will be performed by Oxy Petroleum, Inc. and its contractors and sub-contractors in conformity with this plan and the terms and conditions under which it is approved.

November 29, 1978

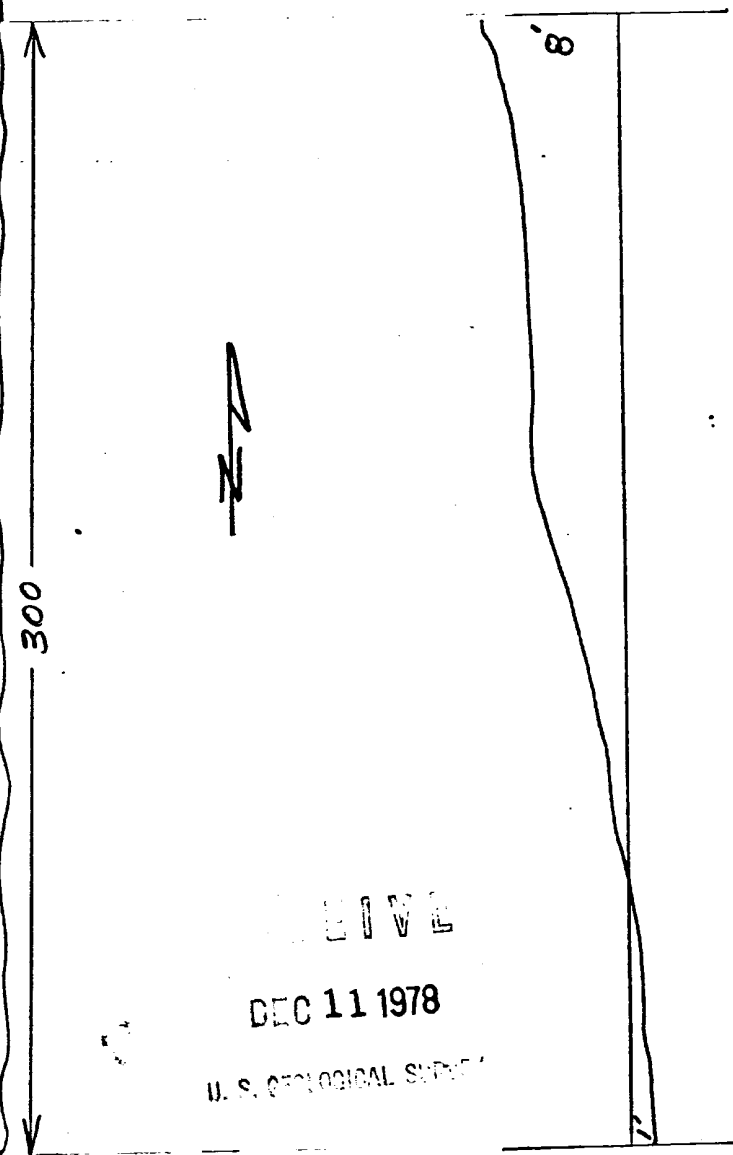

John Alexander

RECEIVED
DEC 11 1978

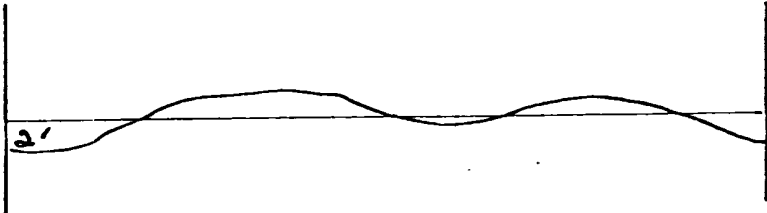
U. S. GEOLOGICAL SURVEY



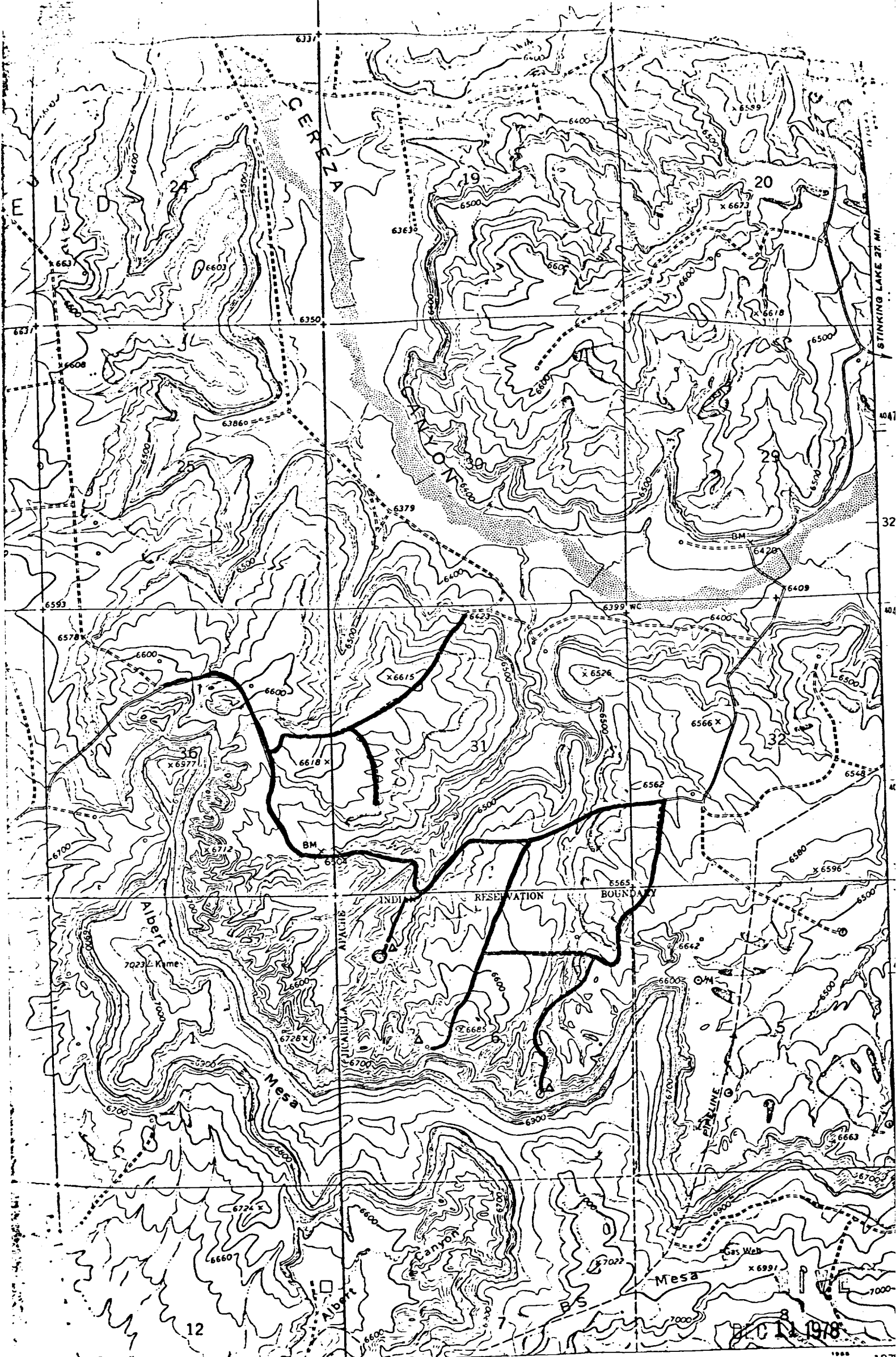
horizontal scale: 1" = 50'



vertical scale: 1" = 10'



Oxy Petroleum, INC
 Loc: 11a West # 9A
 1100' FNL & 790' FNL
 S. 6, T. 26N, R. 5W
 Rio Arriba, N.M



M. A. 537 25' R. 6 W.

Vicinity Map for
 OXY PETROLEUM, INCORPORATED #9A JICARILLA WEST
 1100' FNL 790' FWL Sec 6-T26N-R5W
 RIO ARRIBA COUNTY, NEW MEXICO

U. S. GEOLOGICAL SURVEY

Δ = TANKS

DEC 14 1978