

UNITED STATES  
DEPARTMENT OF THE INTERIOR  
GEOLOGICAL SURVEY

## APPLICATION FOR PERMIT TO DRILL, DEEPEN, OR PLUG BACK

## 1a. TYPE OF WORK

DRILL ☒DEEPEN ☐PLUG BACK ☐

## b. TYPE OF WELL

OIL  
WELL ☐GAS  
WELL ☒

OTHER

SINGLE  
ZONE ☒MULTIPLE  
ZONE ☐

## 2. NAME OF OPERATOR

SUPRON ENERGY CORPORATION

## 3. ADDRESS OF OPERATOR

P.O. Box 808, Farmington, New Mexico 87401

## 4. LOCATION OF WELL (Report location clearly and in accordance with any State requirements.\*)

At surface

1000 feet from the South line and 965 feet from the East line

At proposed prod. zone

Same as above

## 14. DISTANCE IN MILES AND DIRECTION FROM NEAREST TOWN OR POST OFFICE\*

One mile east of Ojito, New Mexico

## 15. DISTANCE FROM PROPOSED\*

LOCATION TO NEAREST  
PROPERTY OR LEASE LINE, FT.  
(Also to nearest drlg. unit line, if any) 965

## 16. NO. OF ACRES IN LEASE

2560

## 18. DISTANCE FROM PROPOSED LOCATION\*

TO NEAREST WELL, DRILLING, COMPLETED,  
OR APPLIED FOR, ON THIS LEASE, FT. 662

## 19. PROPOSED DEPTH

6200

17. NO. OF ACRES ASSIGNED  
TO THIS WELL

E 320

## 20. ROTARY OR CABLE TOOLS

0 - 6200

## 21. ELEVATIONS (Show whether DF, RT, GR, etc.)

7379 Gr.

## 22. APPROX. DATE WORK WILL START\*

8-1-79

## 23.

## PROPOSED CASING AND CEMENTING PROGRAM

SIZE OF HOLE	SIZE OF CASING	WEIGHT PER FOOT	SETTING DEPTH	QUANTITY OF CEMENT
12-1/4"	9-5/8"	32.30	250	150 sx
8-3/4"	7"	23.00	4100	200 sx
6-1/4"	4-1/2"	10.50	6200	300 sx

We plan to drill this well to approximately 4100 feet with mud and set 7" intermediate casing; then drill to T.D. of approximately 6200 with air or natural gas and hang a 4 1/2" liner to T.D. The Mesaverde zone will then be perforated and sand - water fractured.

RECEIVED

MAY 10 1973

U.S. GEOLOGICAL SURVEY  
BUREAU OF LAND MANAGEMENT

Gas is dedicated

IN ABOVE SPACE DESCRIBE PROPOSED PROGRAM: If proposal is to deepen or plug back, give data on present productive zone and proposed new productive zone. If proposal is to drill or deepen directionally, give pertinent data on subsurface locations and measured and true vertical depths. Give blowout preventer program, if any.

## 24.

SIGNED

Kenneth E. Roddy

TITLE Production Superintendent

DATE May 9, 1979

(This space for Federal or State office use)

PERMIT NO.

APPROVAL DATE

APPROVED BY

TITLE

DATE

CONDITIONS OF APPROVAL, IF ANY:

Okaf

Stat.

**NEW MEXICO OIL CONSERVATION COMMISSION  
WELL LOCATION AND ACREAGE DEDICATION PLAT**

Form C-102  
Supersedes C-128  
Effective 1-1-65

All distances must be from the outer boundaries of the Section.

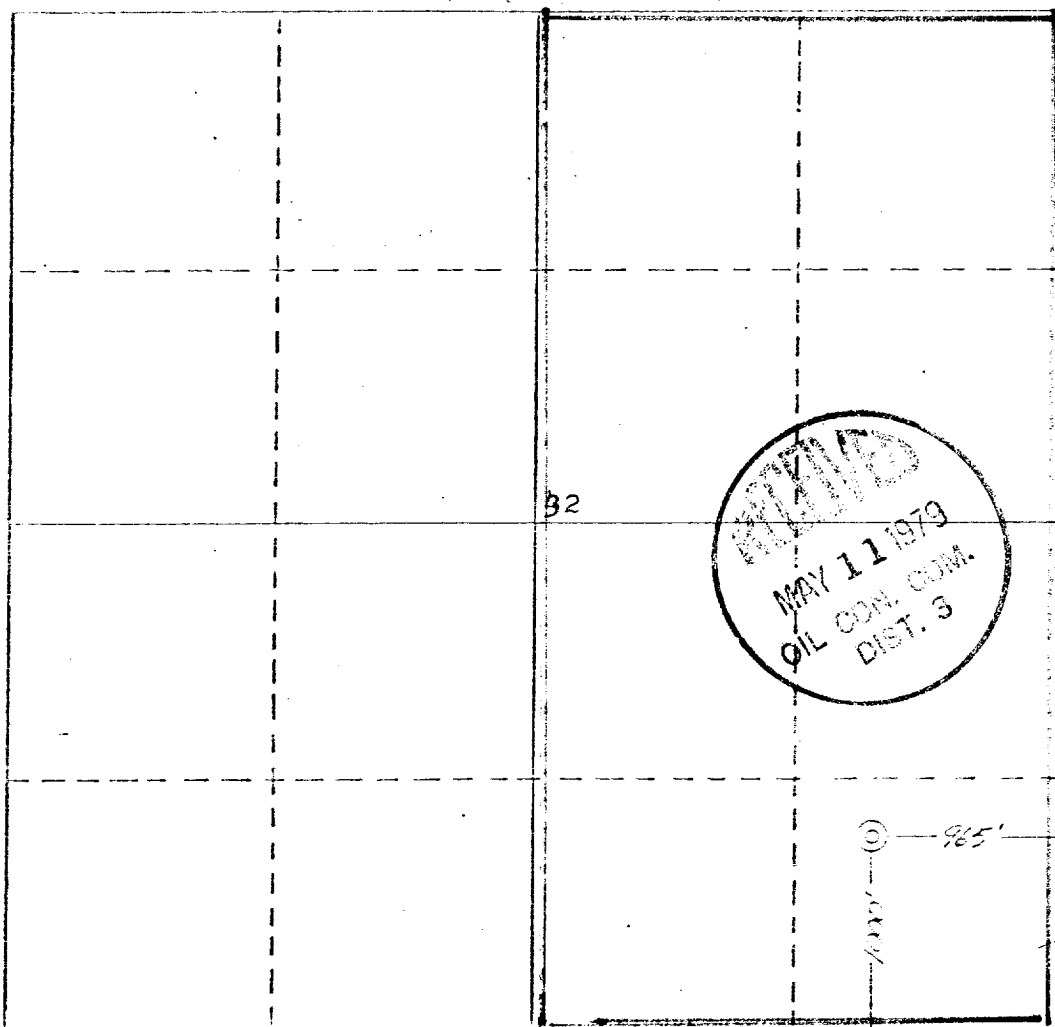
Operator <b>SUPRON ENERGY CORPORATION</b>			Lease <b>JICARILLA "D"</b>		Well No. <b>13-A</b>
Unit Letter <b>P</b>	Section <b>32</b>	Township <b>26 NORTH</b>	Range <b>3 WEST</b>	County <b>RIO ARriba</b>	
Actual Postage Location of Well: <div style="display: flex; justify-content: space-between;"> <span>1000 feet from the <b>SOUTH</b> line and</span> <span>965 feet from the <b>EAST</b> line</span> </div>					
Ground Level Elev. <b>7379</b>	Producing Formation <b>MESA VERDE</b>	Pool <b>BLANCO</b>	Dedicated Acreage: <b>21/2 320</b> Acres		

1. Outline the acreage dedicated to the subject well by colored pencil or hatchure marks on the plat below.
2. If more than one lease is dedicated to the well, outline each and identify the ownership thereof (both as to working interest and royalty).
3. If more than one lease of different ownership is dedicated to the well, have the interests of all owners been consolidated by communitization, unitization, force-pooling, etc?

☐ Yes    ☐ No    If answer is "yes," type of consolidation \_\_\_\_\_

If answer is "no," list the owners and tract descriptions which have actually been consolidated. (Use reverse side of this form if necessary.) \_\_\_\_\_

No allowable will be assigned to the well until all interests have been consolidated (by communitization, unitization, forced-pooling, or otherwise) or until a non-standard unit, eliminating such interests, has been approved by the Commission.



**CERTIFICATION**

I hereby certify that the information contained herein is true and complete to the best of my knowledge and belief.

*Rudy D. Netto*  
Name

**Rudy D. Netto**

Position

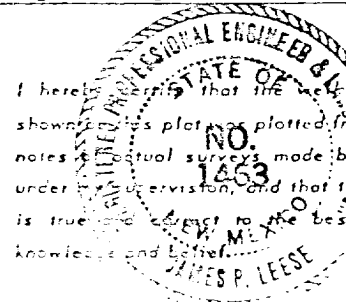
**Area Superintendent**

Company

**SUPRON ENERGY CORPORATION**

Date

**April 10, 1979**



I hereby certify that the well location shown on this plat was plotted from field notes of actual surveys made by me or under my supervision, and that the same is true and correct to the best of my knowledge and belief.

Date Surveyed

**4 April 1979**

Registered Professional Engineer  
and/or Land Surveyor

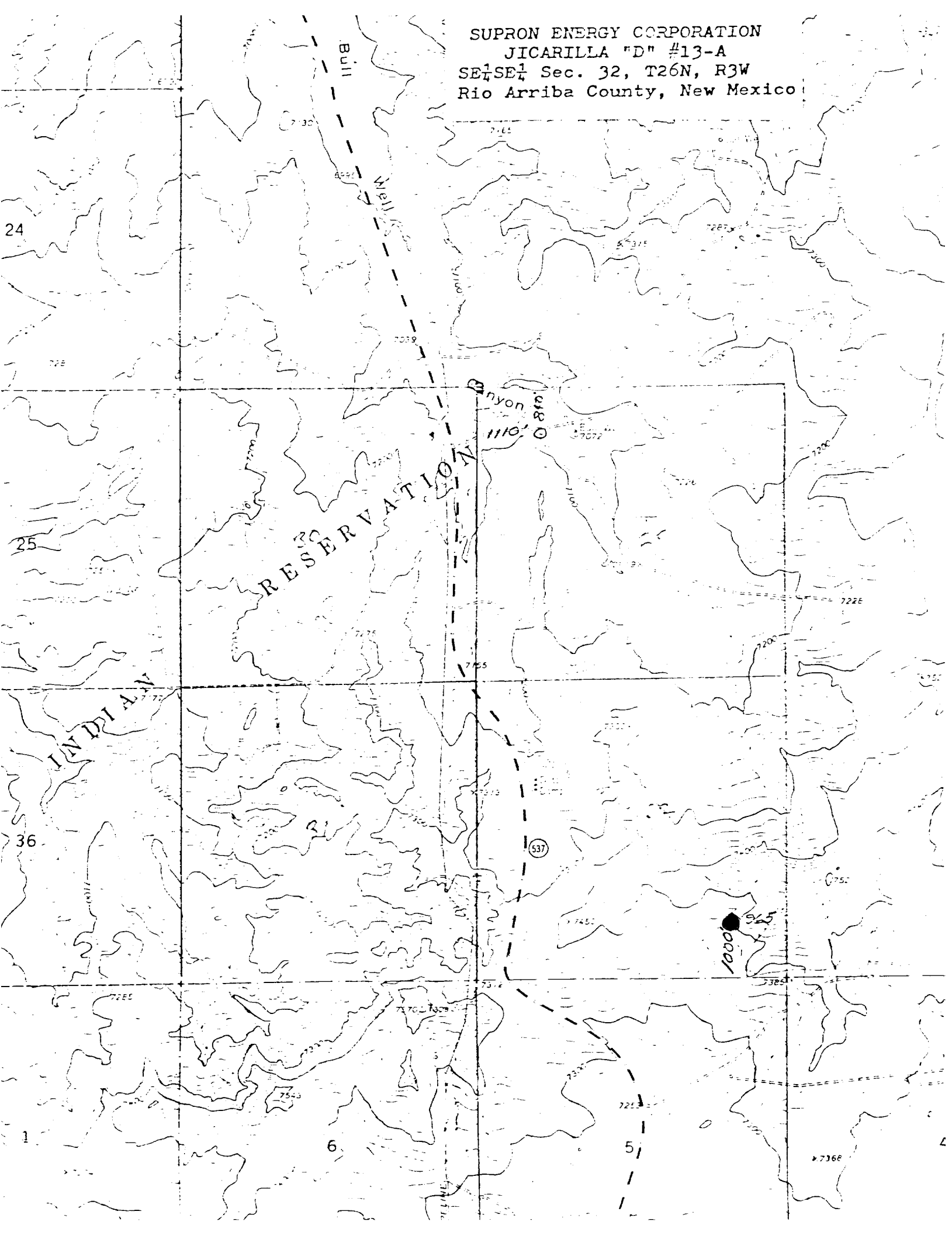
**James P. Leese**

Certificate No.

**1463**

0 330 660 990 1320 1650 1980 2310 2640 2970 3300 3630 3960 4290 4620 4950 5280 5610 5940 6270 6600

SUPRON ENERGY CORPORATION  
JICARILLA "D" #13-A  
SE $\frac{1}{4}$ SE $\frac{1}{4}$  Sec. 32, T26N, R3W  
Rio Arriba County, New Mexico



Jicarilla "D" No. 13-A  
Unit P, Section 32, Township 26N, Range 3W  
Rio Arriba County, New Mexico

SUPPLEMENT TO FORM 9-331C

1. The Geologic name of the surface formation is "Wasatch".
2. The estimated tops of important Geologic markers are:

A. Base of Ojo Alamo	3735
B. Top of Pictured Cliffs	3980
C. Top of Cliff House	5645
D. Top of Point Lookout	6110
3. The estimated depth at which anticipated water, oil, or other mineral - bearing formations are expected to be encountered are:

A. Base of Ojo Alamo	3735 - water
B. Top of Pictured Cliffs	3980 - gas
C. Top of Cliff House	5645 - water and gas
D. Top of Point Lookout	6110 - gas
4. The casing program is shown on form 9-331C and all casing is new.
5. The lessee's pressure - control equipment schematics are attached, along with minimum specifications, testing procedures, and frequencies.
6. The type, estimated volumes, and characteristics of the circulating media are as follows:

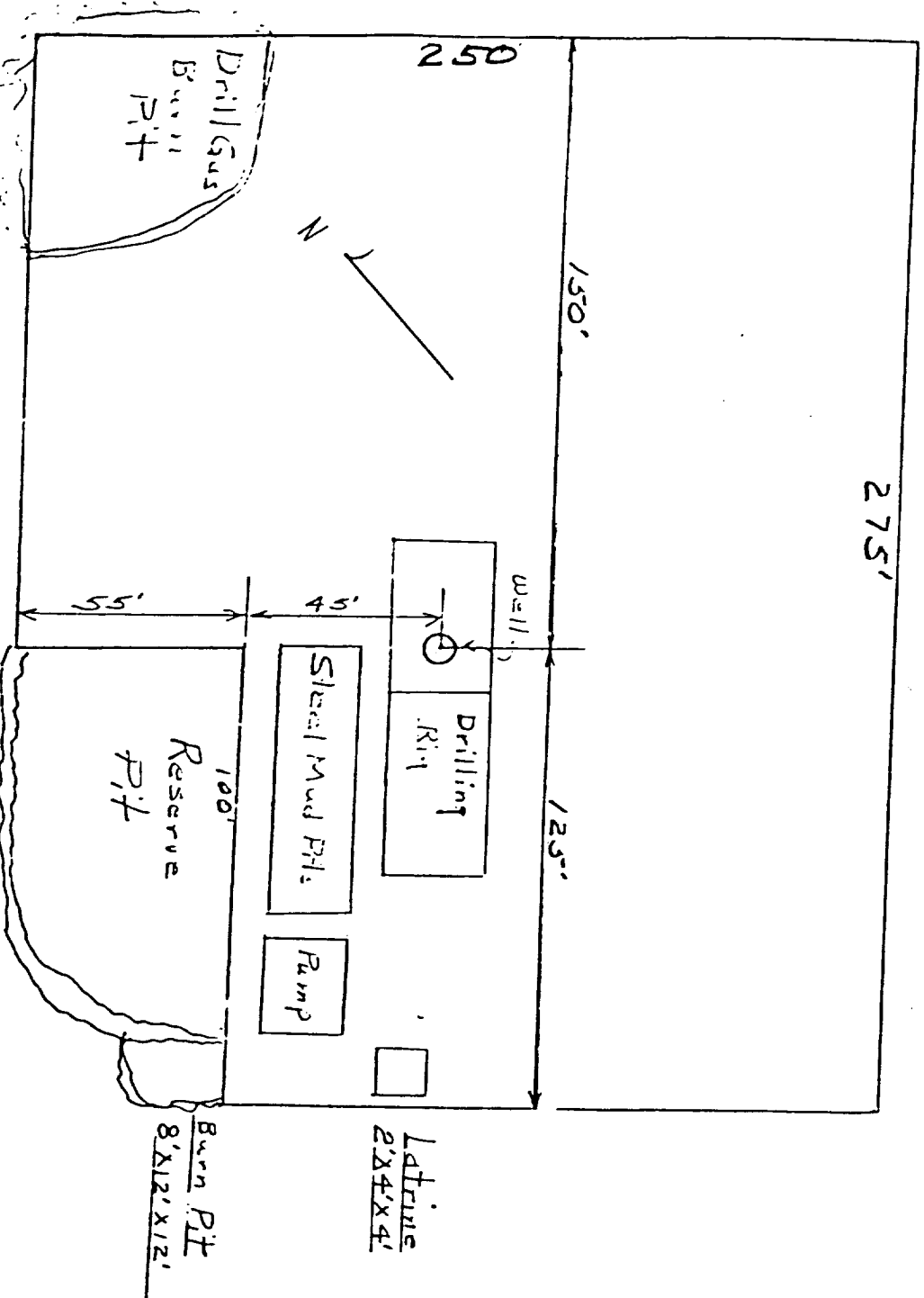
A. 0 - 250 ft. natural mud
B. 250 - 4100 ft. permaloid non-dispersed mud with 167 sx gel, 67 sx permaloid, 10 sx C.M.C.
C. 4100 - 6200 ft. natural gas or air.
7. The auxiliary equipment to be used will be floats at the bit and a sub on the floor with a full-opening valve to be stabbed into the drill pipe when the kelly is not in the string.
8. This well is in an area which is partially developed; therefore we will not have a testing and coring program. The logging program will be as follows:

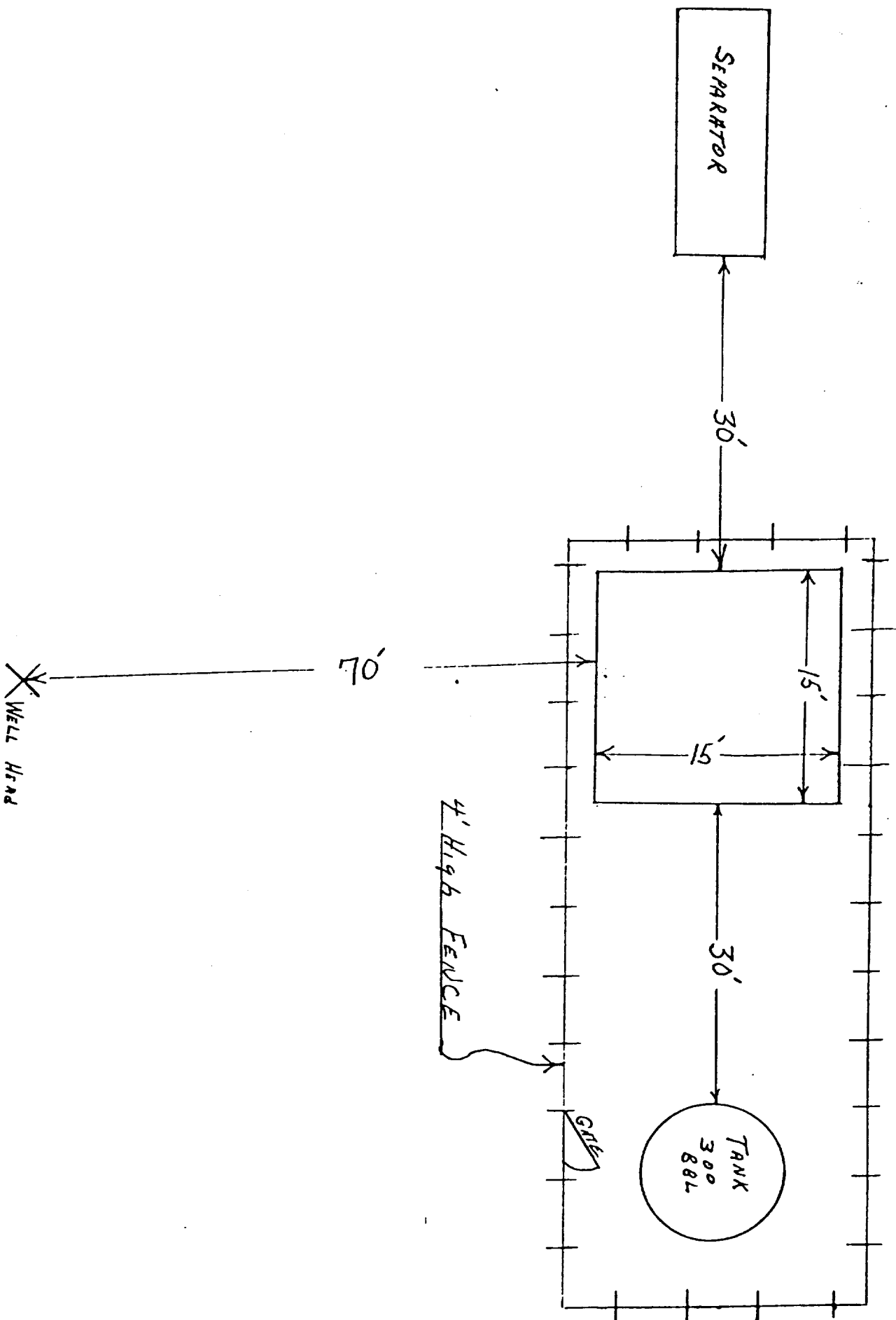
A. E.S. Induction.
B. Gamma Ray Density.
C. Gamma Ray Correlation.
D. Cement Bond Log.
9. We do not expect to find any abnormal pressures, temperatures or hydrogen sulphide problems in this partially - developed area.
10. The anticipated starting date for this well is 8-1-79

SUPRON ENERGY CORPORATION  
LOCATION AND EQUIPMENT LAYOUT

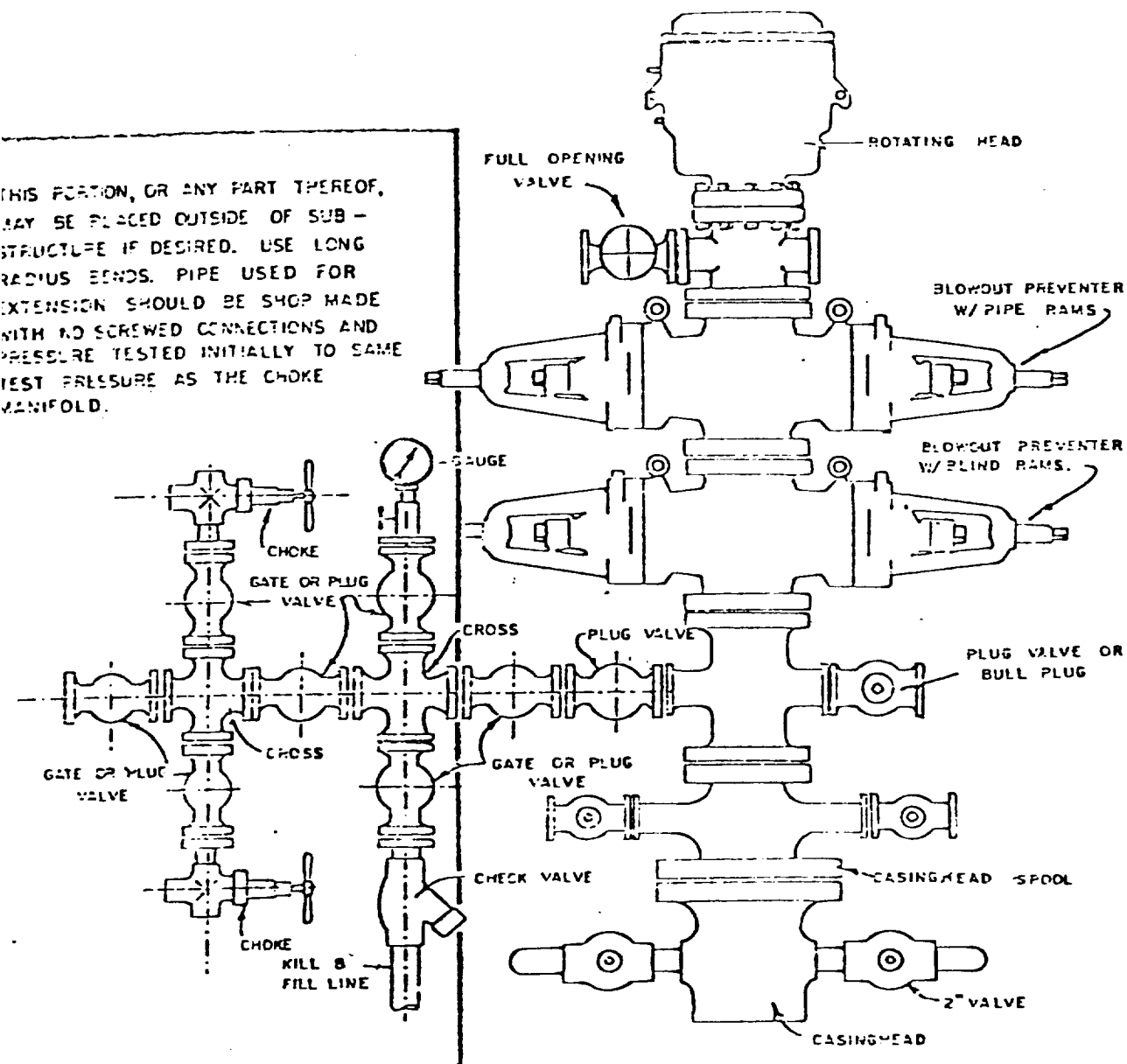
JICARILLA "D" NO. 13-A

965 Feet from the East line and 1000 feet from the South line of Section 32, Township 26 North, Range 3 West, Rio Arriba County, New Mexico.





THIS PORTION, OR ANY PART THEREOF, MAY BE PLACED OUTSIDE OF SUB-STRUCTURE IF DESIRED. USE LONG RADIUS BENDS. PIPE USED FOR EXTENSION SHOULD BE SHOP MADE WITH NO SCREWED CONNECTIONS AND PRESSURE TESTED INITIALLY TO SAME TEST PRESSURE AS THE CHOKE MANIFOLD.

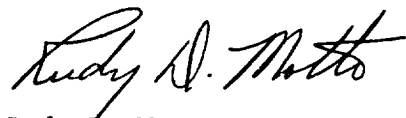


BLOWOUT PREVENTER HOOKUP

SUPRON ENERGY CORPORATION  
POST OFFICE BOX 808  
FARMINGTON, NEW MEXICO 87401

I hereby certify that I, or persons under my direct supervision, have inspected the proposed drillsite and access route; that I am familiar with the conditions which presently exist; that the statements made in this plan are, to the best of my knowledge, true and correct; and, that the work associated with the operations proposed herein will be performed by SUPRON ENERGY CORPORATION and its contractors subcontractors in conformity with this plan and the terms and conditions under which it is approved.

SUPRON ENERGY CORPORATION

A handwritten signature in cursive script, reading "Rudy D. Motto".

Rudy D. Motto  
Area Superintendent  
Phone: 325-3587