

30-039-22298

UNITED STATES
DEPARTMENT OF THE INTERIOR
GEOLOGICAL SURVEY

APPLICATION FOR PERMIT TO DRILL, DEEPEN, OR PLUG BACK

1a. TYPE OF WORK
DRILL ☒ DEEPEN ☐ PLUG BACK ☐

b. TYPE OF WELL
OIL WELL ☐ GAS WELL ☒ OTHER ☐ SINGLE ZONE ☐ MULTIPLE ZONE ☐

2. NAME OF OPERATOR
Tenneco Oil Company

3. ADDRESS OF OPERATOR
720 South Colorado Blvd., Denver, Co. 80222

4. LOCATION OF WELL (Report location clearly and in accordance with any State requirements.)
At surface
M 790' FSL, 990' FWL
At proposed prod. zone

14. DISTANCE IN MILES AND DIRECTION FROM NEAREST TOWN OR POST OFFICE*
19.4 miles North/Northeast of Counselor, NM

15. DISTANCE FROM PROPOSED* LOCATION TO NEAREST PROPERTY OR LEASE LINE, FT. (Also to nearest drlg. unit line, if any)
2560.00

18. DISTANCE FROM PROPOSED LOCATION* TO NEAREST WELL, DRILLING, COMPLETED, OR APPLIED FOR, ON THIS LEASE, FT.
7500'

21. ELEVATIONS (Show whether DF, RT, GR, etc.)
6578 GR

5. LEASE DESIGNATION AND SERIAL NO.

Contract # 108

6. IF INDIAN, ALLOTTEE OR TRIBE NAME

7. UNIT AGREEMENT NAME

8. FARM OR LEASE NAME

Jicarilla "C"

9. WELL NO.

4E

10. FIELD AND POOL, OR WILDCAT

Basin Dakota

11. SEC., T., R., M., OR BLE. AND SURVEY OR AREA

Sec. 24, T26N, R5W

12. COUNTY OR PARISH 13. STATE

Rio Arriba

N.M.

17. NO. OF ACRES ASSIGNED TO THIS WELL

W 320

20. ROTARY OR CABLE TOOLS

Rotary

22. APPROX. DATE WORK WILL START*

A.S.A.P.

23. PROPOSED CASING AND CEMENTING PROGRAM

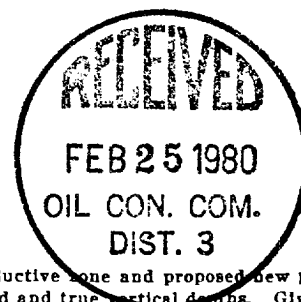
SIZE OF HOLE	SIZE OF CASING	WEIGHT PER FOOT	SETTING DEPTH	QUANTITY OF CEMENT
12 1/4"	8 5/8" New	24# K-55	+ 350'	Circulate to Surface
7 7/8"	4 1/2" New	10.5# - 11.6#	- 7500'	Circulate to surface in two stages

See Attached

No abnormal temperatures, pressures, or geologic hazards are expected

The gas is dedicated

DRILLING SPECIFICATIONS AND PRICES ARE
SUBJECT TO CHANGE. SEE ATTACHED
"GENERAL CONDITIONS"



IN ABOVE SPACE DESCRIBE PROPOSED PROGRAM: If proposal is to deepen or plug back, give data on present productive zone and proposed new productive zone. If proposal is to drill or deepen directionally, give pertinent data on subsurface locations and measured and true vertical depths. Give blowout preventer program, if any.

24.

SIGNED *M. T. Freeman*

TITLE Staff Production Analyst

DATE December 28, 1979

(This space for Federal or State office use)

PERMIT NO.

APPROVAL DATE

APPROVED BY

TITLE

DATE

CONDITIONS OF APPROVAL, IF ANY: 1980

James F. Sims
JAMES F. SIMS
DISTRICT ENGINEER

*See Instructions On Reverse Side

DEC 31 1979

U. S. GEOLOGICAL SURVEY
DURANGO, COLO.

All distances must be from the outer boundaries of the Section.

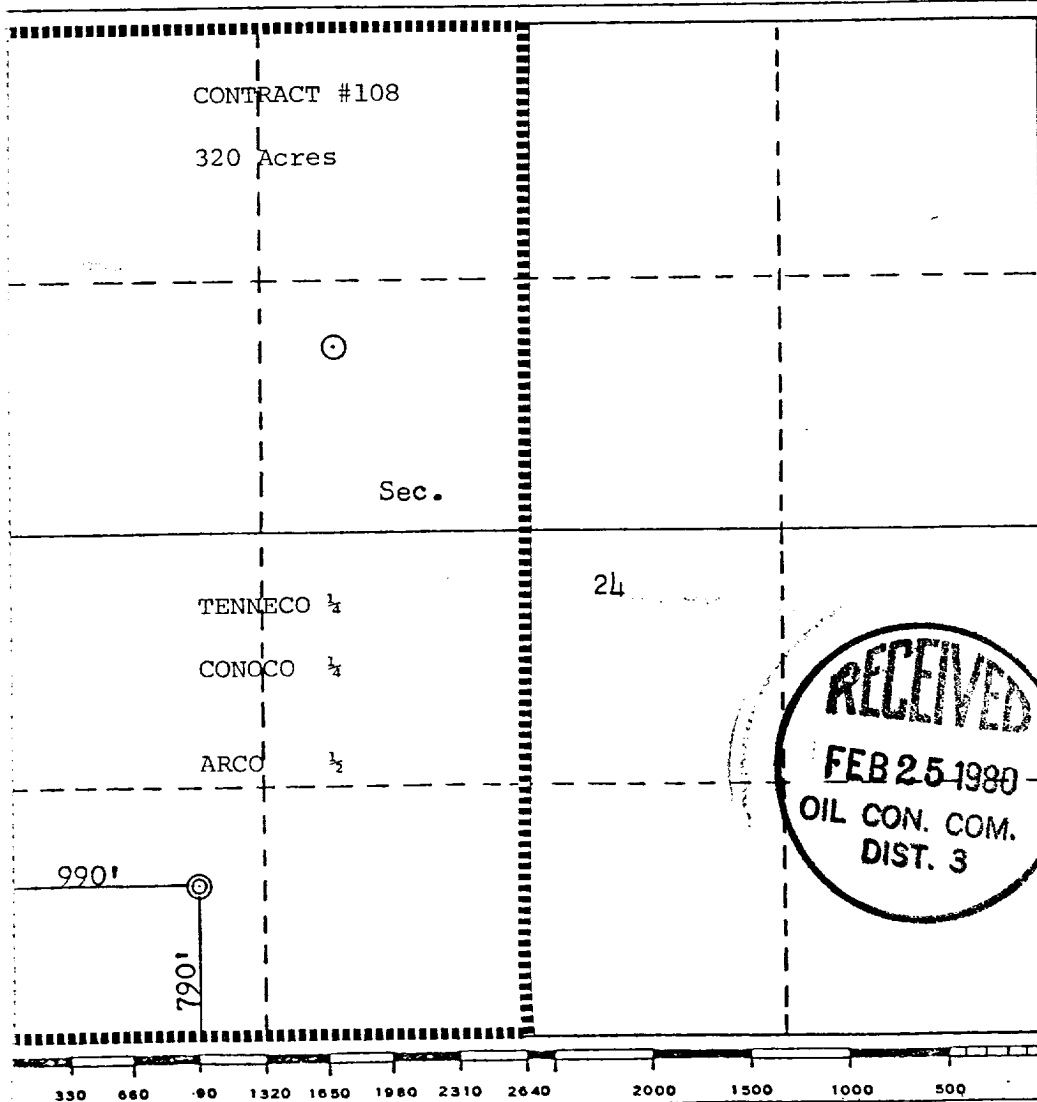
Operator TENNECO OIL COMPANY			Lease JICARILLA "C"		Well No. 4-E
Unit Letter M	Section 24	Township 26N	Range 5W	County Rio Arriba	
Actual Footage Location of Well: 790 feet from the South line and 990 feet from the West line					
Ground Level Elev. 6578	Producing Formation Dakota		Pool Basin Dakota		Dedicated Acreage: W 320 Acres

1. Outline the acreage dedicated to the subject well by colored pencil or hatchure marks on the plat below.
2. If more than one lease is dedicated to the well, outline each and identify the ownership thereof (both as to working interest and royalty).
3. If more than one lease of different ownership is dedicated to the well, have the interests of all owners been consolidated by communitization, unitization, force-pooling, etc?

☐ Yes ☐ No If answer is "yes," type of consolidation _____

If answer is "no," list the owners and tract descriptions which have actually been consolidated. (Use reverse side of this form if necessary.) _____

No allowable will be assigned to the well until all interests have been consolidated (by communitization, unitization, forced-pooling, or otherwise) or until a non-standard unit, eliminating such interests, has been approved by the Commission.



CERTIFICATION

I hereby certify that the information contained herein is true and complete to the best of my knowledge and belief.

M. L. Freeman
Name

M. L. Freeman

Position

Staff Production Analyst

Company

Tenneco Oil Company

Date

December 28, 1979

I hereby certify that the well location shown on this plat was plotted from field notes of actual surveys made by me or under my supervision, and that the same is true and correct to the best of my knowledge and belief.

Date Surveyed

October 26, 1979

Registered Professional Engineer and/or Land Surveyor

Fred B. Scher
Fred B. Scher

Certificate No. **3950**

3950

RECEIVED
FEB 25 1980
OIL CON. COM.
DIST. 3

All distances must be from the outer boundaries of the Section.

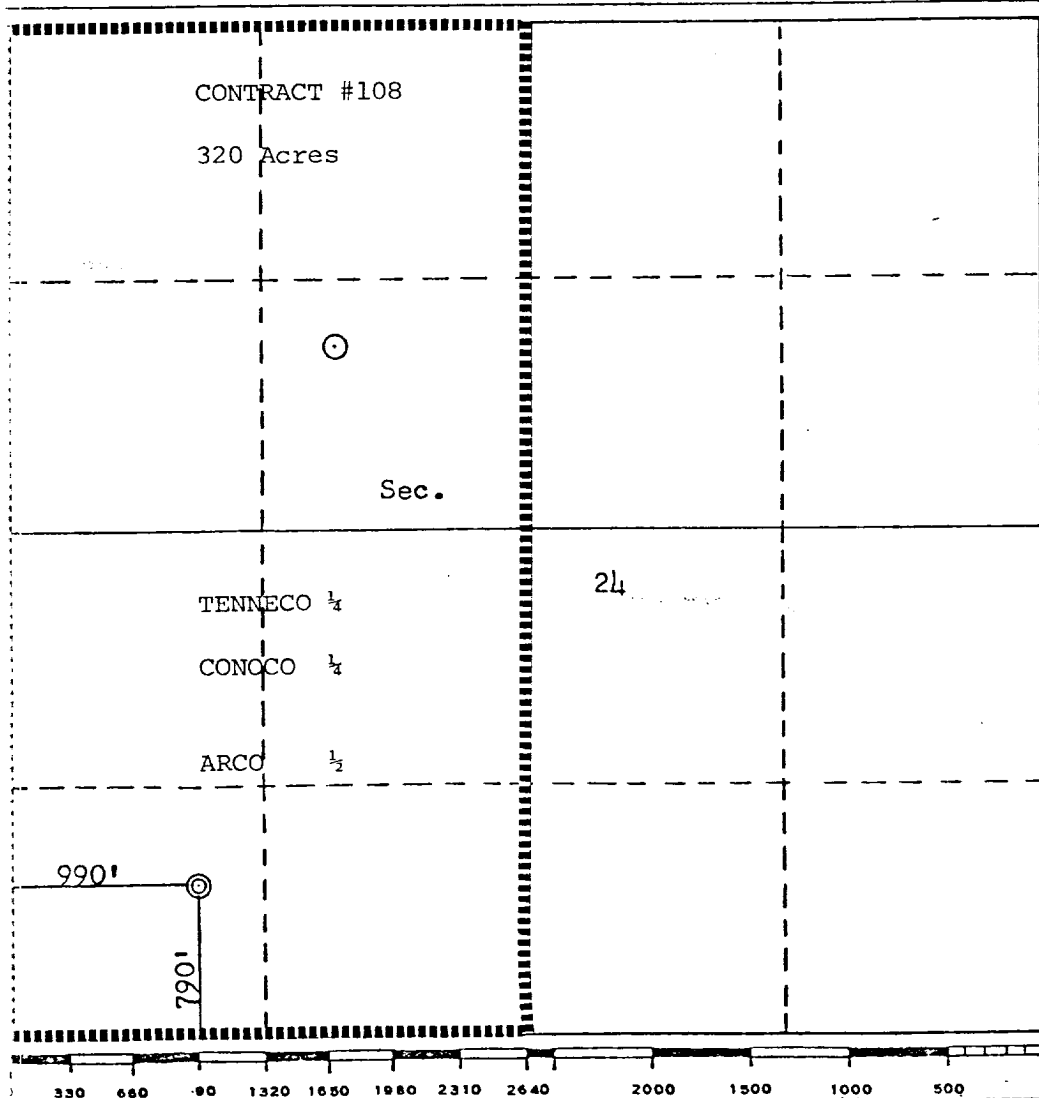
Operator TENNECO OIL COMPANY			Lease JICARILLA "C"		Well No. 4-E
Unit Letter M	Section 24	Township 26N	Range 5W	County Rio Arriba	
Actual Footage Location of Well:					
790 feet from the South line and		990 feet from the West line			
Ground Level Elev. 6578	Producing Formation Dakota	Pool Basin Dakota		Dedicated Acreage: 320 Acres	

- Outline the acreage dedicated to the subject well by colored pencil or hatchure marks on the plat below.
- If more than one lease is dedicated to the well, outline each and identify the ownership thereof (both as to working interest and royalty).
- If more than one lease of different ownership is dedicated to the well, have the interests of all owners been consolidated by communitization, unitization, force-pooling, etc?

☐ Yes ☐ No If answer is "yes," type of consolidation _____

If answer is "no," list the owners and tract descriptions which have actually been consolidated. (Use reverse side of this form if necessary.) _____

No allowable will be assigned to the well until all interests have been consolidated (by communitization, unitization, forced-pooling, or otherwise) or until a non-standard unit, eliminating such interests, has been approved by the Commission.



CERTIFICATION

I hereby certify that the information contained herein is true and complete to the best of my knowledge and belief.

M. L. Freeman
Name

M. L. Freeman

Position

Staff Production Analyst

Company

Tenneco Oil Company

Date

December 28, 1979

I hereby certify that the well location shown on this plat was plotted from field notes of actual surveys made by me or under my supervision, and that the same is true and correct to the best of my knowledge and belief.

Date Surveyed

October 26, 1979

Registered Professional Engineer
and/or Land Surveyor

Fred B. Kerr Jr.
Fred B. Kerr Jr.

Certificate No.

3950

TENNECO OIL COMPANY
ROCKY MOUNTAIN DIVISION
PENTHOUSE, 720 SOUTH COLORADO BOULEVARD
DENVER, COLORADO 80222

DRILLING PROGRAM

DATE: November 19, 1979

LEASE: Jicarilla C

WELL NO.: 4-E

LOCATION: 790' FSL, 990' FWL
Sec. 24, T 26N, R 5W
Rio Arriba County, New Mexico

FIELD: Jicarilla Dakota

ELEVATION: 6580' Est. G.L.

TOTAL DEPTH: 7500'

PROJECTED HORIZON: Dakota

SUBMITTED BY: DOUG KEATHLEY

APPROVED BY: John W. Allen

DK/ms

1st Rev.

ESTIMATED FORMATION TOPS

OJO	2800	(Water)
Pictured Cliffs	3150	(Gas)
Cliffhouse	4770	(Gas)
Menefee	4880	(Gas)
Point Lookout	5300	(Gas)
Gallup	6500	(Gas/Oil)
Greenhorn	7210	
Dakota	7318	(Gas)

Surface Formation: San Jose

No abnormal temperatures or pressures are expected.

DRILLING, CASING, AND CEMENT PROGRAM

1. Move in, rig up rotary tools.
2. Drill a 12 1/4" hole to \pm 350'.
3. Run 8 5/8", 24#/ft, K-55, ST&C casing to T.D.
4. Cement with Class "B" cement with 2% CaCl₂. Circulate cement to surface.
5. Wait on cement a minimum of twelve hours. Nipple up blowout preventer and manifold with relief lines. Pressure test to 600 psi for 30 minutes. Test pipe and blind rams.
6. Drill a 7 7/8" hole to T.D.
7. Run open hole logs.
8. Run 4 1/2" casing to T.D. as per casing design.
9. Cement in two stages with sufficient volume to circulate cement to surface. Locate DV tool above Cliffhouse to prevent lost returns in Mesa Verde. Lead in first stage with light cement (pozmix, Halliburton lite, etc.). Tail in with sufficient volume of Class "B" cement to cover the Dakota. Circulate a minimum of four hours between stages. Lead in second stage with light cement. Tail in with 50 sacks Class "B" neat.
10. Set slips, cut casing, and install well head.
11. MORT.
12. If well is non-productive, P & A as per regulatory agency specifications.

CASING PROGRAM

Surface: 350' of 8 5/8", 24#, K-55, ST&C casing.

Production: 4 1/2", 10.5#, K-55, ST&C casing to 7,000'.

4 1/2", 11.6#, K-55, ST&C casing below 7,000'.

MUD PROGRAM

- 0-350 Native solids. Have sufficient viscosity to gel chemical to clean hole and run casing.
- 350-T.D. Low solids. Gel chemical. 32 viscosity and 10-15 water loss down through the Mancos. Before reaching Gallup, add 6% LCM and run viscosity at 38-40 seconds. After penetrating Gallup, let LCM drop.

EVALUATION

Cores and DST's: No cores or DST's are anticipated.

Deviation Surveys:

1. Survey surface hole every 100'. Maximum allowable deviation at surface T.D. is 10°.
2. From surface to total depth, Deviation surveys must be taken every 500' or each trip, whichever is first. This may entail running the TOTCO on wireline. Record each survey on the IADC Drilling Report Sheet. Maximum allowable total deviation change is 5°.

Samples:

No samples required.

Logs:

GR/Induction
Densilog
Repeat formation tester possible in Gallup.

BLOWOUT EQUIPMENT

10" 900-series, double ram hydraulic operated with closing unit and 40 gallon accumulator.

REPORTS

Drilling reports for the past 24 hours will include depth, footage, time distribution, activity breakdown, mud properties, bit record, bottom hole assembly, daily and cumulative mud costs, plus any other pertinent information, will be called into Tenneco Oil Company, Denver, Colorado, between 7:30 a.m. and 8:00 a.m.

1. 303-758-7130 (office) Don Barnes.
303-758-7287 (office) Don Barnes' private line, Monday-Friday (before 7:45 a.m.)
2. 303-936-0704 (home) Don Barnes, weekends and holidays.
3. 303-795-0221 (home) John Owen, if Don Barnes is not available.

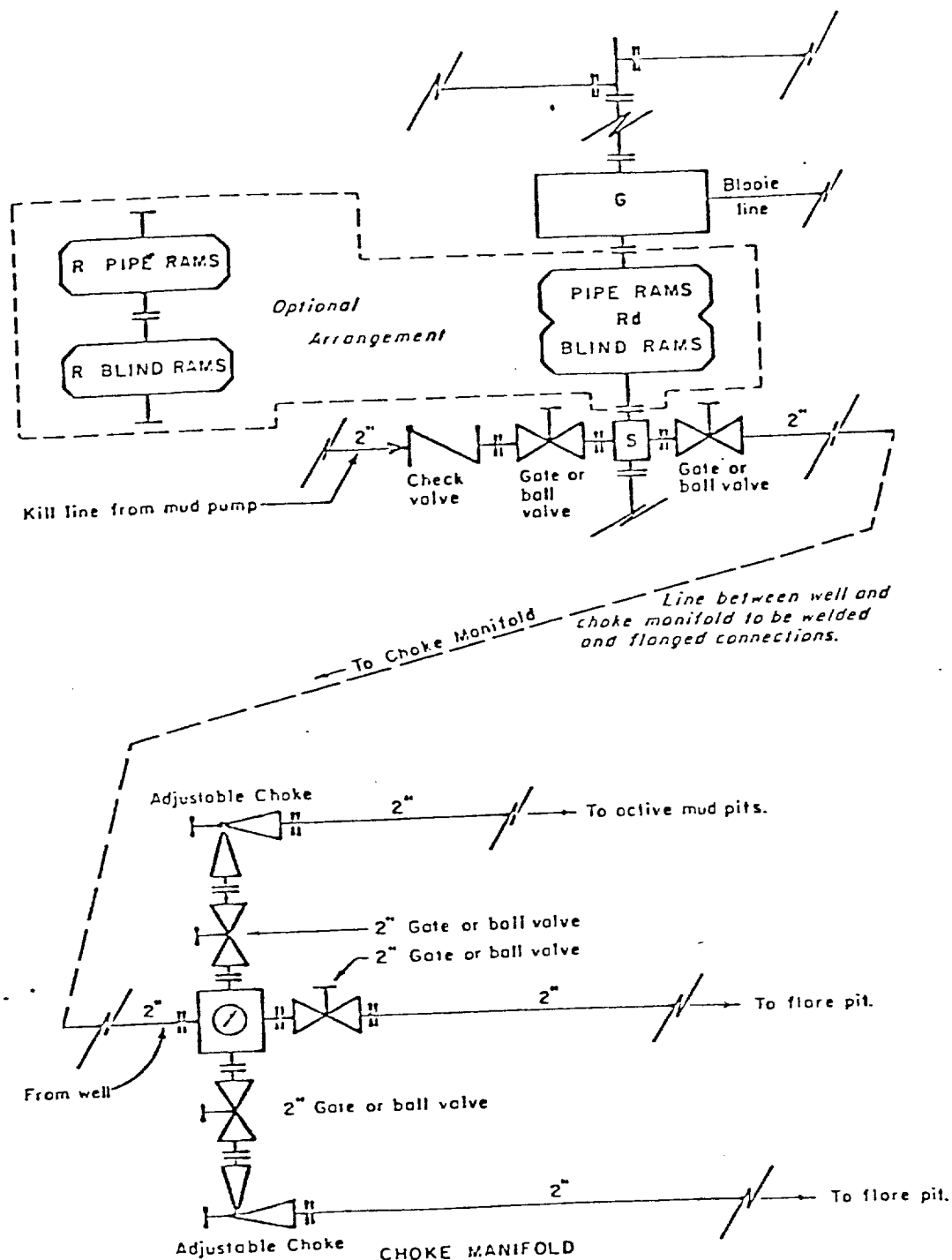
The yellow sheet of the IADC Report to be filled out completely, the original copy of the drilling time recorder, and copies of any invoices from this well, signed and received for Tenneco Oil Company will be mailed daily to:

TENNECO OIL COMPANY
ROCKY MOUNTAIN DIVISION
PENTHOUSE, 720 SOUTH COLORADO BOULEVARD
DENVER, COLORADO 80222

ATTENTION: Drilling Department

In case of emergency, notify the following:

1. Mr. Don Barnes, Division Drilling Engineer - 303-936-0704
2. Mr. John Owen, Project Drilling Engineer - 303-795-0221
3. Mr. Mike Lacey, Division Production Manager - 303-979-0509



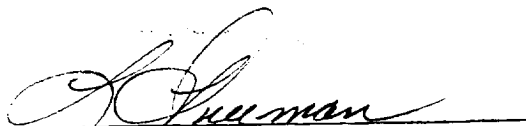
- All equipment to be 3,000 psi working pressure except as noted.
- Rd Double ram type preventer with two sets of rams.
- R Single ram type preventer with one set of rams.
- S Drilling spool with side outlet connections for choke and kill lines.
- G Rotating head 150 psi working pressure minimum

ARRANGEMENT C

TENNECO OIL COMPANY
 ROCKY MOUNTAIN DIVISION
 REQUIRED MINIMUM
 BLOWOUT PREVENTER AND
 CHOKE MANIFOLD

1. Existing Road - Please refer to Map No. 1 which shows the existing roads. New roads which will be required have been marked on this map. All existing and new roads will be properly maintained during the duration of this project.
2. Planned Access Roads - Please refer to Map No. 1. The grade of the access roads will be consistent with that of the local terrain. The road surface will not exceed twenty feet (20') in width. Upon completion of the project, the access road will be adequately drained to control soil erosion. Drainage facilities may include ditches, water bars, culverts or any other measure deemed necessary by trained Company personnel to insure proper drainage. Gates and/or cattleguards will be installed if necessary.
3. Location of Existing Wells - Please refer to Map No. 2.
4. Location of Tank Batteries, Production Facilities, and Production Gathering and Service Lines - Please refer to Maps No. 1 and No. 2. Map No. 2 shows the existing roads and new proposed access roads. All known production facilities are shown on these two maps.
5. Location and Type of Water Supply - Water for the proposed project will be obtained from a private source.
6. Source of Construction Materials - No additional materials will be required to build either the access road or the proposed location.
7. Methods of Handling Waste Materials - All garbage and trash materials will be put into a burn pit shown on the attached Location Plat No. 1. When clean-up operations are begun on the proposed project, the burn pit with its refuse will be buried to a depth of at least three feet (3'). A latrine, the location of which is also shown on Plat No. 1. will be provided for human waste. If large amounts of liquids are left in the reserve pit after completion of the project, the pit will be fenced until the liquids have had adequate time to dry. The location clean-up will not take place until such time as the reserve pit can be properly covered over to prevent run-off from carrying any of these materials into the watershed. No earthen pit will be located on natural drainage; all earthen pits will be so constructed as to prevent leakage from occurring.

8. Ancillary Facilities - No camps or airstrips will be associated with this project.
9. Wellsite Layout - Please refer to the attached Plat No. 1.
10. Plans for Restoration of the Surface - After completion of the proposed project the location will be cleaned and leveled. The location will be left in such a condition that will enable reseeding operations to be carried out. Seed mixture as designated by the responsible government agency will be used. The reseeding operation will be performed during the time period set forth by the regulatory body. The location production equipment will be painted as designated by the responsible government agency.
11. Other Information - The proposed site is located on the Jicarilla Indian Reservation with the surface and minerals belonging to the same. The site is located on the North side of Tapicito wash with level topography and sandy soil. The principal vegetation types are juniper, sagebrush and native grasses.
12. Operator's Representative -
SEE DRILLING PROGNOSIS
13. Certification - I hereby certify that I, or persons under my direct supervision, have inspected the proposed drillsite and access route; that I am familiar with the conditions which presently exist; that the statements made in this plan are, to the best of my knowledge, true and correct; and that the work associated with the operations proposed herein will be performed by Tenneco Oil Company and its contractors and sub-contractors in conformity with this plan and the terms and conditions under which it is approved.


L. Freeman
Staff Production Analyst

TENNECO OIL COMPANY

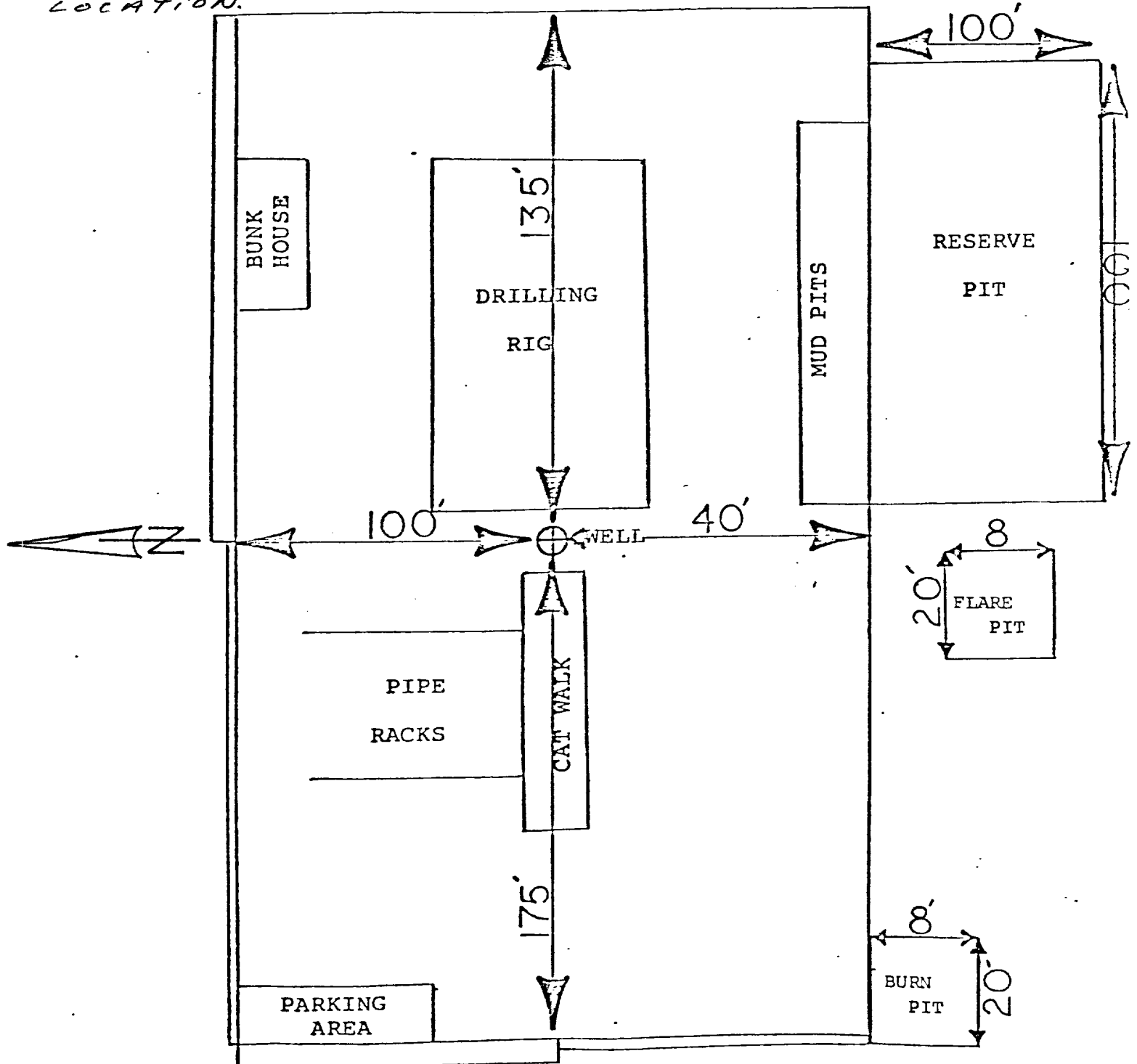
CALCULATION SHEET

EXHIBIT

RILLING WELL SITE LAYOUT *Jicarilla "C" 4E*

790FSL 990FWL SEC 24, T26N, R5W DATE *12/28/79*

1. Stockpile topsoil, place trees and brush in pit and cover, fence all pits.
2. Minimal cuts and fill required
3. Access from existing location on the NE corner of location.





Vicinity Map for
TENNECO OIL COMPANY #4-E JICARILLA "C"
790'FSL 990'FWL Sec 24-T26N-R5W
RIO ARRIBA COUNTY, NEW MEXICO

