

JICARILLA APACHE TRIBE

JUN 26 1968

ENVIRONMENTAL PROTECTION OFFICE

P.O. BOX 507
DULCE, NEW MEXICO 87528

SUBMIT 1 COPY TO
NATURAL
RESOURCE DEPT
AND OIL GAS
ADMINISTRATION

PIT REMEDIATION AND CLOSURE REPORT

Operator: PNM Gas Services (WFS) Telephone: 324-3764

Address: 603 W. Elm Street Farmington, NM 87401

Facility or Well Name: Jicarilla A-13 E Drip

Location: Unit: N Sec. 13 T. 26 N R. 4 W County Rio Arriba

Pit Type: Separator Dehydrator Other Line Drip

Land Type: Jicarilla Apache

Pit Location: Pit dimensions: length 36' width 31' depth 10

(Attach diagram) Reference: wellhead / other Drip Riser

Footage from reference: 21'

Direction from reference: Straight Degrees East of North X
West of South

Depth to Ground Water:

(Vertical distance from contaminants to seasonal high water elevation of ground water)

| | |
|-----------------------|-------------|
| Less than 50 feet | (20 points) |
| 50 feet to 99 feet | (10 points) |
| Greater than 100 feet | (0 points) |

Wellhead Protection Area:

(Less than 200 feet from a private domestic water source, or, less than 1,000 feet from all other water sources)

Yes (20 points)
No (0 points)

Distance to Surface Water:

(Horizontal distance to perennial lakes, ponds, rivers, streams, creeks, irrigation canals and ditches)

| | |
|-------------------------|-------------|
| Less than 200 feet | (20 points) |
| 200 feet to 1,000 feet | (10 points) |
| Greater than 1,000 feet | (0 points) |

Distance to Ephemeral Stream (dry wash):

(Horizontal distance to all downgradient streams having a width of at least 10 feet)

| | |
|--------------------------------|-------------|
| Less than or equal to 100 feet | (10 points) |
| Greater than 100 feet | (0 points) |

Distance to Nearest Lake, Playa, or Watering Pond:

(Horizontal distance to all downgradient lakes, playas, and livestock or wildlife water ponds)

| | |
|--------------------------------|-------------|
| Less than or equal to 100 feet | (10 points) |
| Greater than 100 feet | (0 points) |

RANKING SCORE (TOTAL POINTS) :

Date Remediation Started: 8/25/97 Date Completed: 11/4/97

Remediation Method: Excavation X Approx. Cubic Yards 413

(Check all appropriate sections)

Landfarmed X Amount Landfarmed (cubic yds): 413

Other _____

Remediation Location: Onsite _____ Offsite Jicarilla A-13E Location
(i.e., landfarmed onsite, name and location of offsite facility)

General Description of Remedial Action:

Removed contaminated soil from all four side walls
As to get a below 100 ppm head space reading.
Bottom is rock.

Ground Water Encountered: No X Yes _____ Depth _____

Final Pit Closure Sampling:

Sample Location North, East, South, and West side walls.

(if multiple samples, attach sample result and diagram of sample locations and depths.)

Sample depth 9'

Sample date 8/26/97 Sample time 1003

Sample Results

Soil: Benzene (ppm) ND Water: Benzene (ppb) _____

Total BTEX (ppm) 0.004 Toluene (ppb) _____

Field headspace (ppm) 49.7 Ethylbenzene (ppb) _____

TPH ND ppm Method 8015 Total Xylenes (ppb) _____

Ground Water Sample: Yes _____ No X (If yes, attach sample results)

I HEREBY CERTIFY THAT THE INFORMATION ABOVE IS TRUE AND COMPLETE TO THE BEST OF MY KNOWLEDGE AND MY BELIEF

DATE 9/3/97

PRINTED NAME Ronald A. Dedrick

SIGNATURE Ronald A. Dedrick

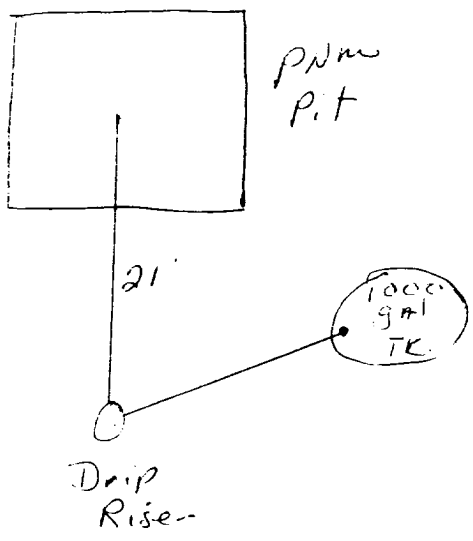
AND TITLE Environmental Technician II

AFTER REVIEW OF THE PIT CLOSURE INFORMATION, PIT CLOSURE IS APPROVED IN ACCORDANCE TO JICARILLA APACHE TRIBE PIT CLOSURE ORDINANCE.

APPROVED: YES X NO _____ (REASON): sprayed + close

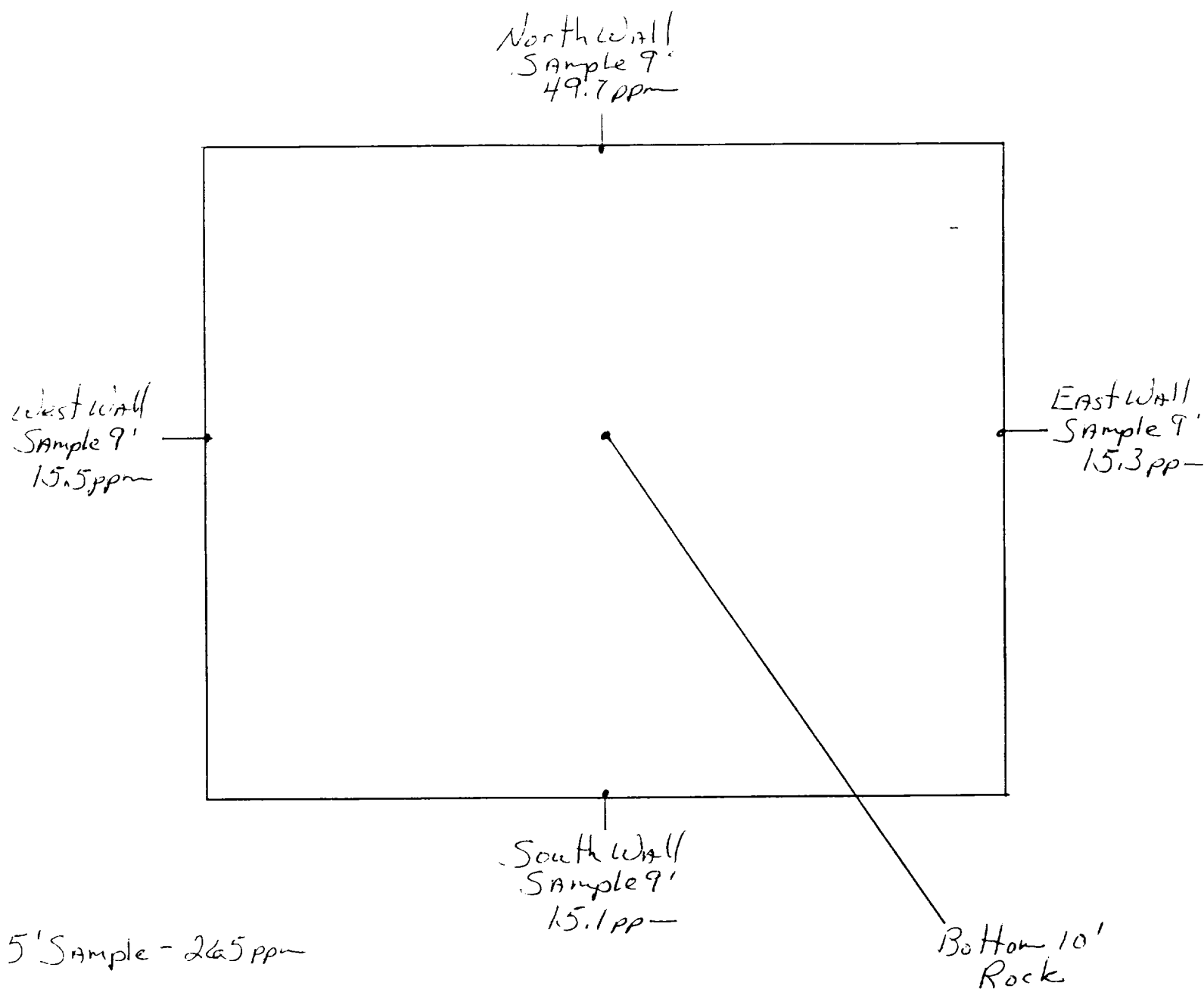
SIGNED: Kenneth Mann DATE: 9-3-97

Jicarilla A-13E Drip
Sec 13 T26N R4W Unit N
WFS



Jicarilla A-13 E Drip
Sec. 13 T26N R4W Unit N
Cor RAD WFS

36' x 31' x 10'



OFF: (505) 325-5667



LAB: (505) 325-1556

ANALYTICAL REPORT

Attn: *Denver Bearden*
Company: *PNM Gas Services*
Address: *603 W. Elm*
City, State: *Farmington, NM 87401*

Date: *2-Sep-97*
COC No.: *5572*
Sample No.: *15970*
Job No.: *2-1000*

Project Name: *PNM Gas Services - Jicarilla A-13E Drip*
Project Location: *9708261003; 4pt. Composite*
Sampled by: *PA* Date: *26-Aug-97* Time: *10:03*
Analyzed by: *DC* Date: *2-Sep-97*
Sample Matrix: *Soil*

Laboratory Analysis

| Parameter | Results as Received | Unit of Measure | Limit of Quantitation | Unit of Measure |
|--|---------------------|-----------------|-----------------------|-----------------|
| <i>Diesel Range Organics (C10 - C28)</i> | ND | mg/kg | 5 | mg/kg |

ND - Not Detected at Limit of Quantitation

Quality Assurance Report

DRO QC No.: 0548-STD

Continuing Calibration Verification

| Parameter | Method Blank | Unit of Measure | True Value | Analyzed Value | RPD | RPD Limit |
|---------------------------------|--------------|-----------------|------------|----------------|------|-----------|
| <i>Diesel Range (C10 - C28)</i> | ND | ppm | 200 | 176 | 12.8 | 15% |

Matrix Spike

| Parameter | 1 - Percent Recovered | 2 - Percent Recovered | Limit | RPD | RPD Limit |
|-------------------------------|-----------------------|-----------------------|----------|-----|-----------|
| <i>Diesel Range (C10-C28)</i> | 84 | 80 | (70-130) | 6 | 20% |

Method - SW-846 EPA Method 8015A mod. - Nonhalogenated Volatile Hydrocarbons by Gas Chromatography

Approved by: *[Signature]*
Date: *9/2/97*

P.O. BOX 2606 • FARMINGTON, NM 87499

ON SITE TECHNOLOGIES, LTD. IS AN EQUAL OPPORTUNITY EMPLOYER

OFF: (505) 325-5667



LAB: (505) 325-1556

ANALYTICAL REPORT

Attn: *Denver Bearden*
Company: *PNM Gas Services*
Address: *603 W. Elm*
City, State: *Farmington, NM 87401*

Date: *2-Sep-97*
COC No.: *5572*
Sample No.: *15970*
Job No.: *2-1000*

Project Name: *PNM Gas Services - Jicarilla A-13E Drip*

Project Location: *9708261003; 4pt. Composite*

Sampled by: *PA* Date: *26-Aug-97* Time: *10:03*

Analyzed by: *HR* Date: *1-Sep-97*


Sample Matrix: *Soil*

Laboratory Analysis

| Parameter | Results as Received | Unit of Measure | Limit of Quantitation | Unit of Measure |
|---------------------|------------------------|--------------------|--------------------------|--------------------|
| <i>Benzene</i> | ND | ug/kg | 1 | ug/kg |
| <i>Toluene</i> | 1 | ug/kg | 1 | ug/kg |
| <i>Ethylbenzene</i> | ND | ug/kg | 1 | ug/kg |
| <i>m,p-Xylene</i> | 1 | ug/kg | 1 | ug/kg |
| <i>o-Xylene</i> | 2 | ug/kg | 1 | ug/kg |
| | <i>TOTAL</i> | 4 | | ug/kg |

ND - Not Detected at Limit of Quantitation

Method - SW-846 EPA Method 8020A Aromatic Volatile Organics by Gas Chromatography

Approved by: 

Date: *9/2/97*

P.O. BOX 2606 • FARMINGTON, NM 87499

- TECHNOLOGY SERVING INDUSTRY WITH THE ENVIRONMENT -

JICARILLA APACHE TRIBE
ENVIRONMENTAL
PROTECTION OFFICE
P.O. BOX 507
DULCE, NEW MEXICO 87528

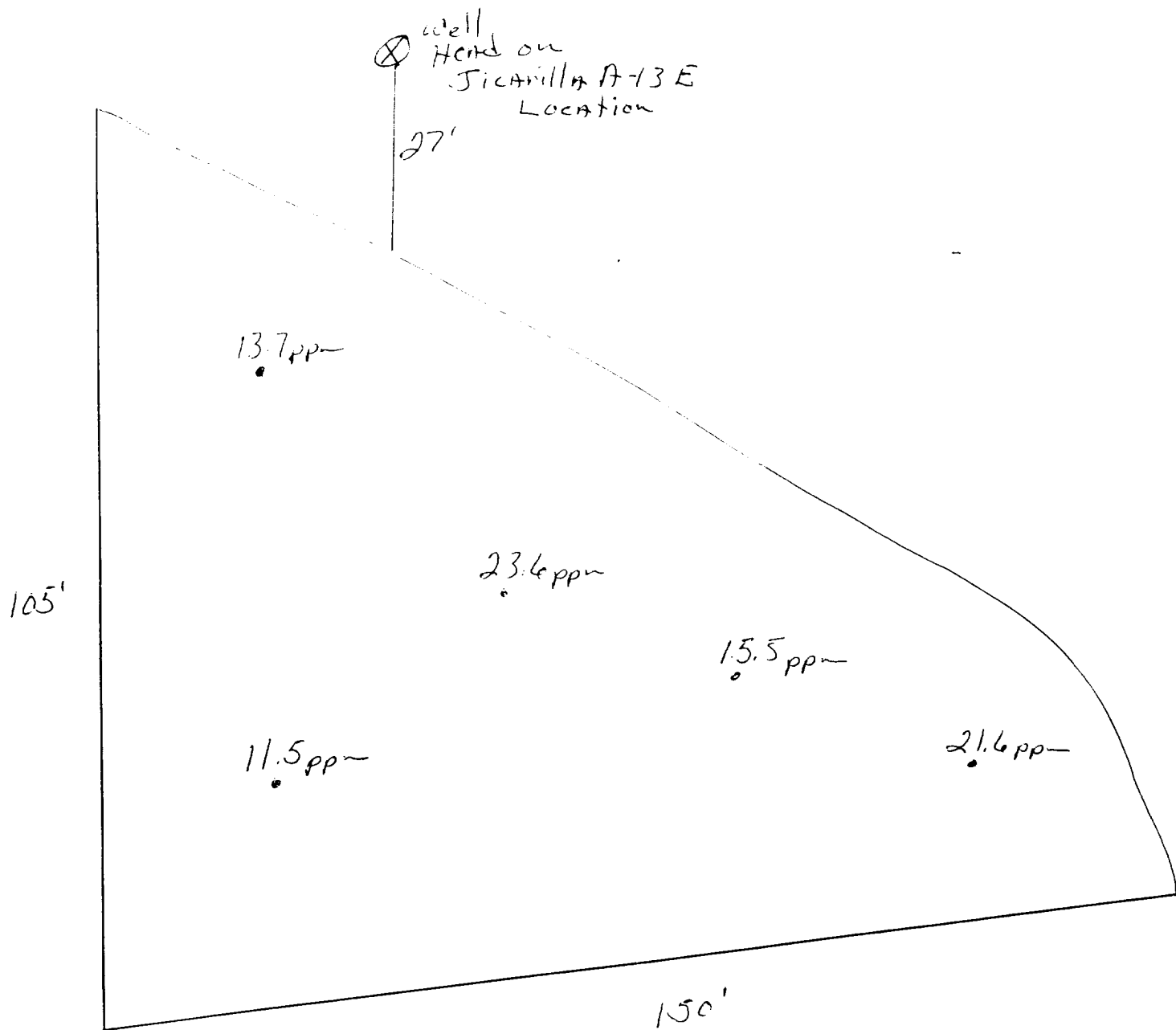
SUBMIT 1 COPY TO
NATURAL
RESOURCE DEPT
AND OIL-GAS
ADMINISTRATION

ON-SITE SOIL REMEDIATION REPORT

| | |
|--|---|
| Operator: PNM Gas Services (WFS) Telephone: 324-3764 | |
| Address: 603 W. Elm Street Farmington, NM 87401 | |
| Facility or Well Name: Jicarilla A-13 E Drip | |
| Location: | Unit: N Sec. 13 T. 26 N R. 4 W County Rio Arriba |
| Land Type: Jicarilla Apache | |
| Date Remediation Started: 8/25/97 Date Completed: 9/17/97 | |
| Remediation Method: Landfarmed <input checked="" type="checkbox"/> Approx. cubic yards 413 | |
| Composted <input type="checkbox"/> | |
| Other <input type="checkbox"/> | |
| Depth to Ground Water: (pts.) 0 | Final Closure Sampling: Sampling Date: 9/10/97 Time 1037 Sampling Results: Field Headspace (ppm) 23.6 TPH (ppm) ND Method 8015 Other |
| Distance to an Ephemeral Stream: (pts.) 0 | |
| Distance to Nearest Lake, Playa, or Watering Pond: (pts.) 0 | |
| Wellhead Protection Area: (pts.) 0 | |
| Distance to Surface Water: (pts.) 0 | |
| Ranking Score (Total Points): 0 | |
| I HEREBY CERTIFY THAT THE INFORMATION ABOVE IS TRUE AND COMPLETE TO THE BEST OF MY KNOWLEDGE AND BELIEF | |
| DATE 9/18/97 | PRINTED NAME Ronald A. Dedrick |
| SIGNATURE Ronald A. Dedrick | AND TITLE Environmental Technician II |
| AFTER REVIEW OF THE SOIL REMEDIATION INFORMATION, ON-SITE REMEDIATION APPROVED IN ACCORDANCE TO THE JICARILLA APACHE TRIBE PIT CLOSURE ORDINANCE | |
| APPROVED: YES <input checked="" type="checkbox"/> NO <input type="checkbox"/> (REASON) we are backfill | |
| SIGNED: Joe C. McNeill | DATE: 9-30-97 |

Jicarilla A-13E Drip
Sec. 13 T26N R4W Unit N
WFS

Land farm



OFF: (505) 325-5667



LAB: (505) 325-1556

ANALYTICAL REPORT

Attn: *Denver Bearden*
Company: *PNM Gas Services*
Address: *603 W. Elm*
City, State: *Farmington, NM 87401*

Date: *18-Sep-97*
COC No.: *5595*
Sample No.: *16140*
Job No.: *2-1000*

Project Name: *PNM Gas Services - Jicarilla A-13E Drip Landfarm*

Project Location: *9709101037; 5pt. Composite*

Sampled by: *RB* Date: *10-Sep-97* Time: *10:37*

Analyzed by: *DC/HR* Date: *17-Sep-97*

Sample Matrix: *Soil*

Laboratory Analysis

| Parameter | Results as Received | Unit of Measure | Limit of Quantitation | Unit of Measure |
|--|---------------------|-----------------|-----------------------|-----------------|
| <i>Diesel Range Organics (C10 - C28)</i> | ND | mg/kg | 5 | mg/kg |

ND - Not Detected at Limit of Quantitation

Quality Assurance Report

DRO QC No.: 0555-STD

Continuing Calibration Verification

| Parameter | Method Blank | Unit of Measure | True Value | Analyzed Value | RPD | RPD Limit |
|---------------------------------|--------------|-----------------|------------|----------------|------|-----------|
| <i>Diesel Range (C10 - C28)</i> | ND | ppm | 200 | 177 | 12.5 | 15% |

Matrix Spike

| Parameter | 1 - Percent Recovered | 2 - Percent Recovered | Limit | RPD | RPD Limit |
|-------------------------------|-----------------------|-----------------------|----------|-----|-----------|
| <i>Diesel Range (C10-C28)</i> | 87 | 88 | (70-130) | 1 | 20% |

Method - SW-846 EPA Method 8015A mod. - Nonhalogenated Volatile Hydrocarbons by Gas Chromatography

Approved by: *[Signature]*
Date: *9/18/97*

P.O. BOX 2606 • FARMINGTON, NM 87499

• ALL TESTS ARE PERFORMED IN ACCORDANCE WITH THE STANDARD METHOD •