

All distances must be from the outer boundaries of the Section.

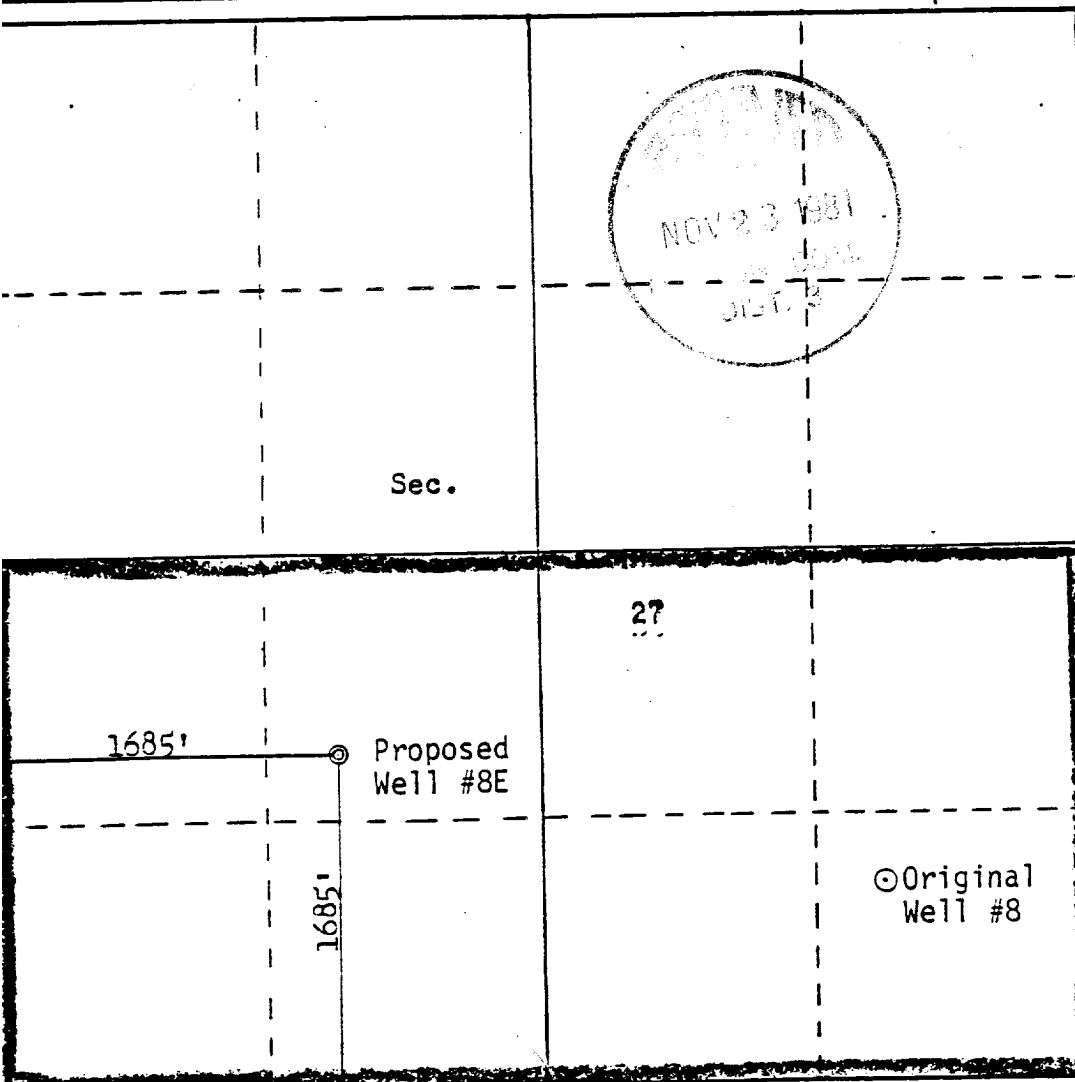
Operator <b>MARATHON OIL COMPANY</b>		Lease <b>JICARILLA APACHE</b>		Well No. <b>8E</b>
Unit Letter <b>K</b>	Section <b>27</b>	Township <b>26N</b>	Range <b>5W</b>	County <b>Rio Arriba</b>
Actual Footage Location of Well: <b>1685</b> feet from the <b>South</b> line and <b>1685</b> feet from the <b>West</b> line				
Ground Level Elev: <b>6660</b>	Producing Formation <b>Point Lookout</b>	Pool <b>Blanco Mesaverde</b>	Dedicated Acreage <b>320</b> Acres	

1. Outline the acreage dedicated to the subject well by colored pencil or hachure marks on the plat below.
2. If more than one lease is dedicated to the well, outline each and identify the ownership thereof (both as to working interest and royalty).
3. If more than one lease of different ownership is dedicated to the well, have the interests of all owners been consolidated by communitization, unitization, force-pooling, etc?

Yes  No If answer is "yes," type of consolidation N/A

If answer is "no," list the owners and tract descriptions which have actually been consolidated. (Use reverse side of this form if necessary.) \_\_\_\_\_

No allowable will be assigned to the well until all interests have been consolidated (by communitization, unitization, forced-pooling, or otherwise) or until a non-standard unit, eliminating such interests, has been approved by the Commission. **BLANCO MESAVERDE CERTIFICATION 11-16-81. DALE T. CADDY**



**CERTIFICATION**

I hereby certify that the information contained herein is true and complete to the best of my knowledge and belief.

*Dale T. Caddy*

Name	Dale T. Caddy
Position	District Operations Manager
Company	Marathon Oil Company
Date	November 21, 1980

I hereby certify that the well location shown on this plat was plotted from field notes of actual surveys made by me or under my supervision, and that the same is true and correct to the best of my knowledge and belief.

Date Surveyed	November 21, 1980
Registered Professional Engineer and Land Surveyor	<i>Fred B. Kerr Jr.</i>
Certificate No.	3950

Scale: 1"=1000'